

MCF example for luamplib(Lua \LaTeX)

Author : Akira Yamaji Date : July 17, 2017
Located at : <http://www.ctan.org/pkg/mcf2graph>

FM(C) : molecular formula calculated by mcf2graph

MW(C) : molecular weight calculated by mcf2graph

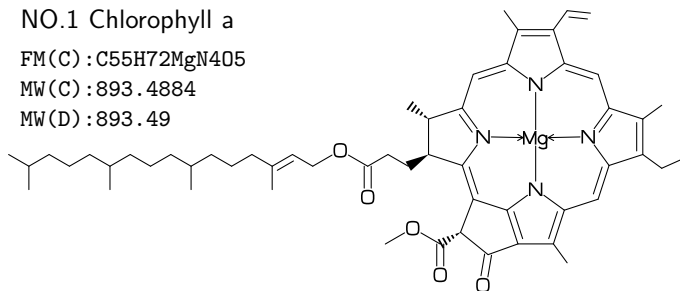
MW(D) : molecular weight from literature data

NO.1 Chlorophyll a

FM(C) : $\text{C}_{55}\text{H}_{72}\text{MgN}_4\text{O}_5$

MW(C) : 893.4884

MW(D) : 893.49

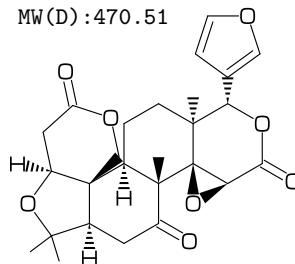


NO.2 Limonin

FM(C) : $\text{C}_{26}\text{H}_{30}\text{O}_8$

MW(C) : 470.5113

MW(D) : 470.51

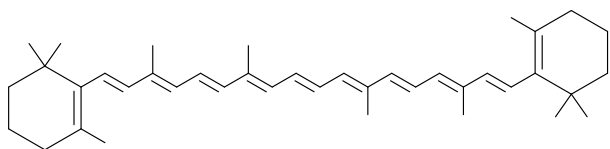


NO.3 beta-carotene

FM(C) : $\text{C}_{40}\text{H}_{56}$

MW(C) : 536.8722

MW(D) : 536.87

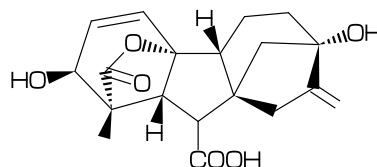


NO.4 Gibberellin A3

FM(C) : $\text{C}_{19}\text{H}_{22}\text{O}_6$

MW(C) : 346.3742

MW(D) : 346.37

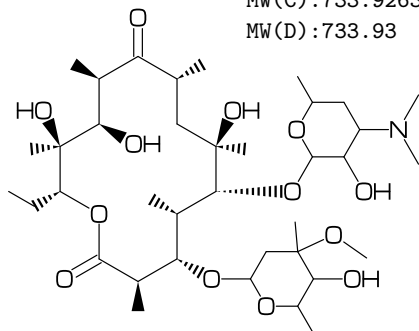


NO.5 Erythromycin

FM(C) : $\text{C}_{37}\text{H}_{67}\text{N}_{13}\text{O}_{13}$

MW(C) : 733.9263

MW(D) : 733.93

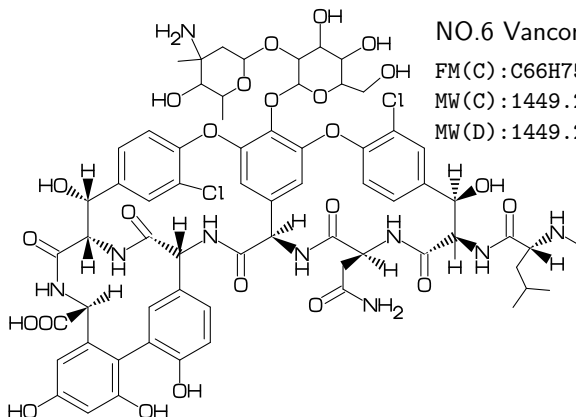


NO.6 Vancomycin

FM(C) : $\text{C}_{66}\text{H}_{75}\text{Cl}_2\text{N}_9\text{O}_{24}$

MW(C) : 1449.253

MW(D) : 1449.25



NO.7 Maitotoxin

FM(C) : $\text{C}_{164}\text{H}_{256}\text{Na}_{20}\text{O}_{68}\text{S}_2$

MW(C) : 3425.854

MW(D) : 3425.86

