

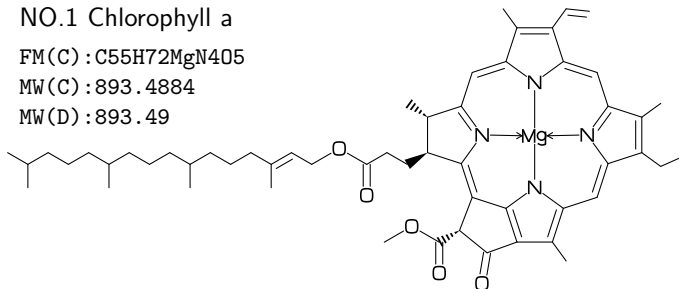
MCF example for luamplib(Lua \LaTeX)

Author : Akira Yamaji Date : November 5, 2016
Located at : <http://www.ctan.org/pkg/mcf2graph>

FM(C) : molecular formula calculated by mcf2graph
MW(C) : molecular weight calculated by mcf2graph
MW(D) : molecular weight from literature data

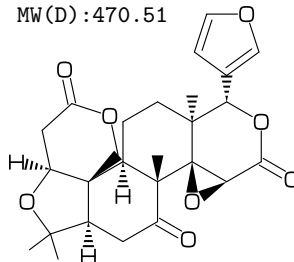
NO.1 Chlorophyll a

FM(C) : $\text{C}_{55}\text{H}_{72}\text{MgN}_4\text{O}_5$
MW(C) : 893.4884
MW(D) : 893.49



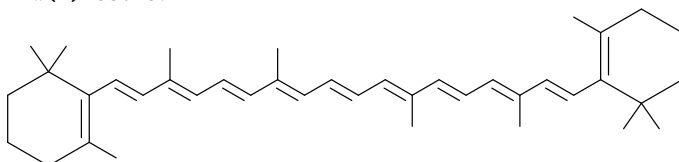
NO.2 Limonin

FM(C) : $\text{C}_{26}\text{H}_{30}\text{O}_8$
MW(C) : 470.51138
MW(D) : 470.51



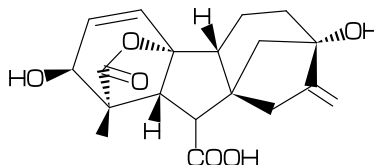
NO.3 beta-carotene

FM(C) : $\text{C}_{40}\text{H}_{56}$
MW(C) : 536.8722
MW(D) : 536.87



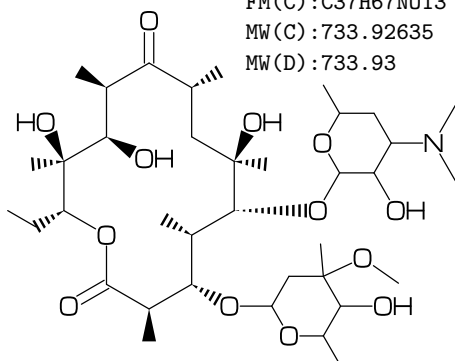
NO.4 Gibberellin A3

FM(C) : $\text{C}_{19}\text{H}_{22}\text{O}_6$
MW(C) : 346.37422
MW(D) : 346.37



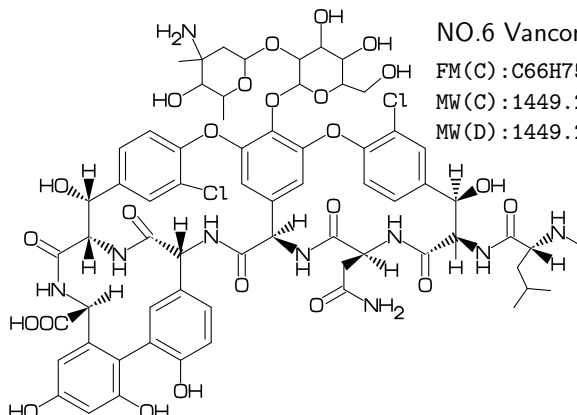
NO.5 Erythromycin

FM(C) : $\text{C}_{37}\text{H}_{67}\text{N}_{13}$
MW(C) : 733.92635
MW(D) : 733.93



NO.6 Vancomycin

FM(C) : $\text{C}_{66}\text{H}_{75}\text{Cl}_{12}\text{N}_{9}\text{O}_{24}$
MW(C) : 1449.25307
MW(D) : 1449.25



NO.7 Maitotoxin

FM(C) : $\text{C}_{164}\text{H}_{256}\text{Na}_{20}\text{S}_2$
MW(C) : 3425.85455
MW(D) : 3425.86

