

# MCF example for luamplib(Lua $\text{\LaTeX}$ )

Author : Akira Yamaji    Date : January 29, 2017  
Located at : <http://www.ctan.org/pkg/mcf2graph>

FM(C) : molecular formula calculated by mcf2graph

MW(C) : molecular weight calculated by mcf2graph

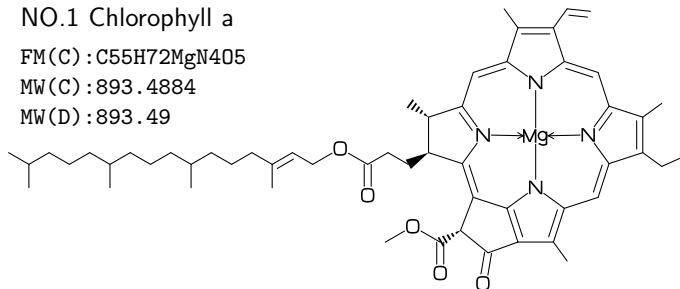
MW(D) : molecular weight from literature data

NO.1 Chlorophyll a

FM(C) : C<sub>55</sub>H<sub>72</sub>MgN<sub>4</sub>O<sub>5</sub>

MW(C) : 893.4884

MW(D) : 893.49

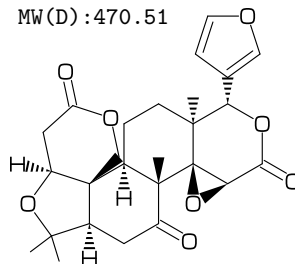


NO.2 Limonin

FM(C) : C<sub>26</sub>H<sub>30</sub>O<sub>8</sub>

MW(C) : 470.5113

MW(D) : 470.51

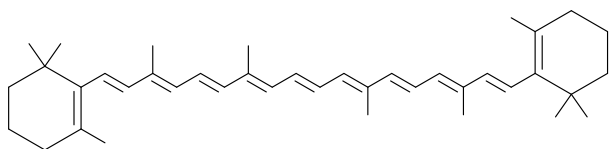


NO.3 beta-carotene

FM(C) : C<sub>40</sub>H<sub>56</sub>

MW(C) : 536.8722

MW(D) : 536.87

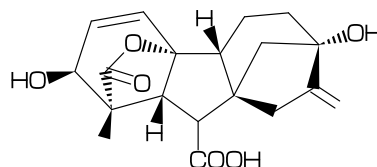


NO.4 Gibberellin A3

FM(C) : C<sub>19</sub>H<sub>22</sub>O<sub>6</sub>

MW(C) : 346.3742

MW(D) : 346.37

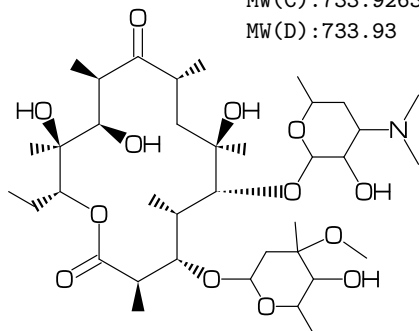


NO.5 Erythromycin

FM(C) : C<sub>37</sub>H<sub>67</sub>N<sub>13</sub>

MW(C) : 733.9263

MW(D) : 733.93

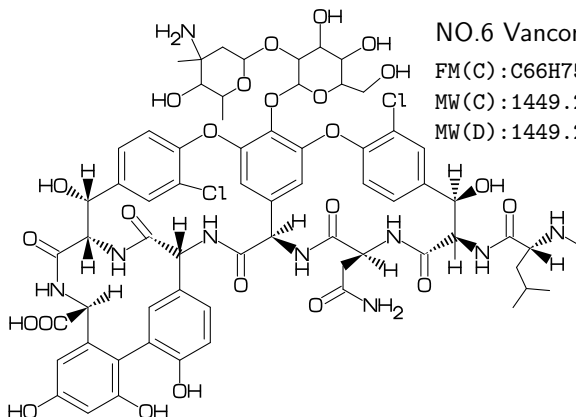


NO.6 Vancomycin

FM(C) : C<sub>66</sub>H<sub>75</sub>Cl<sub>2</sub>N<sub>9</sub>O<sub>24</sub>

MW(C) : 1449.253

MW(D) : 1449.25



NO.7 Maitotoxin

FM(C) : C<sub>164</sub>H<sub>256</sub>Na<sub>20</sub>S<sub>2</sub>

MW(C) : 3425.854

MW(D) : 3425.86

