

## Tests.

- Normal input command.



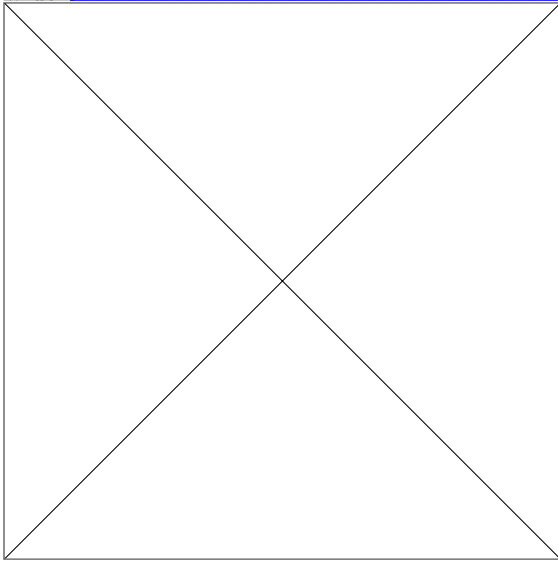
- Use includegraphics with file ending.



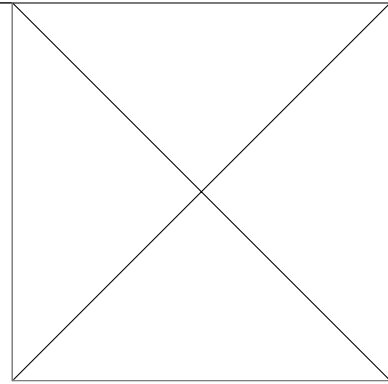
- Use includegraphics without file ending.



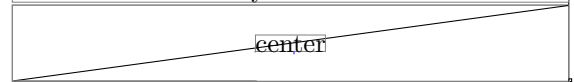
- Use includegraphics with scaling to the column's width.



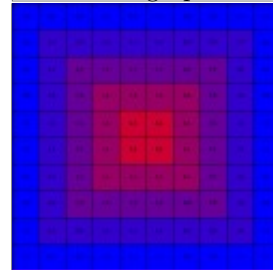
- Use includegraphics with scaling to a dimension.



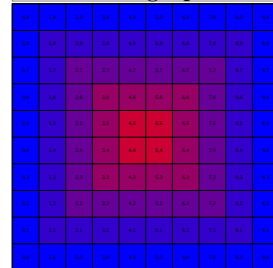
- Use includegraphics with scaling while having column width already.



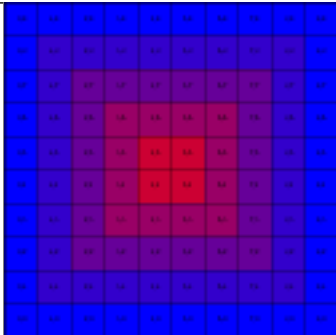
- Use includegraphics with jpg.



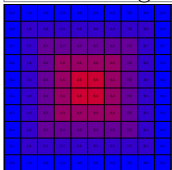
- Use includegraphics with pdf.



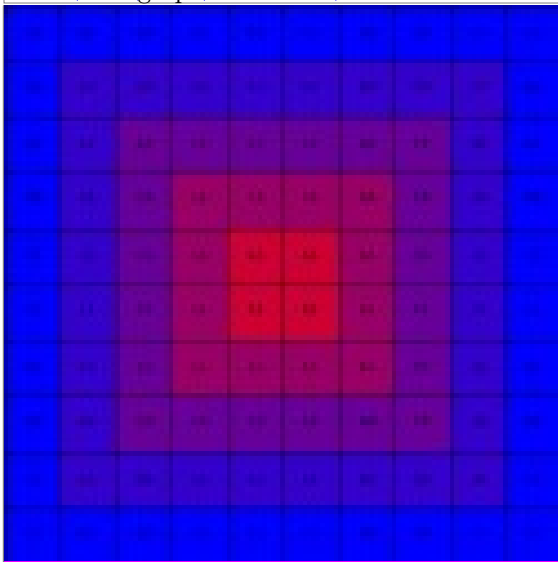
- Use includegraphics with png.



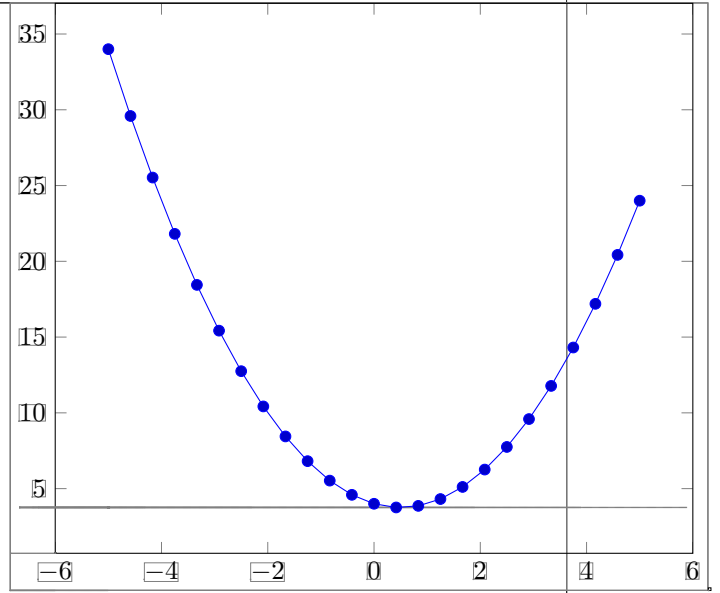
• Use includegraphics with pdf and scaling.



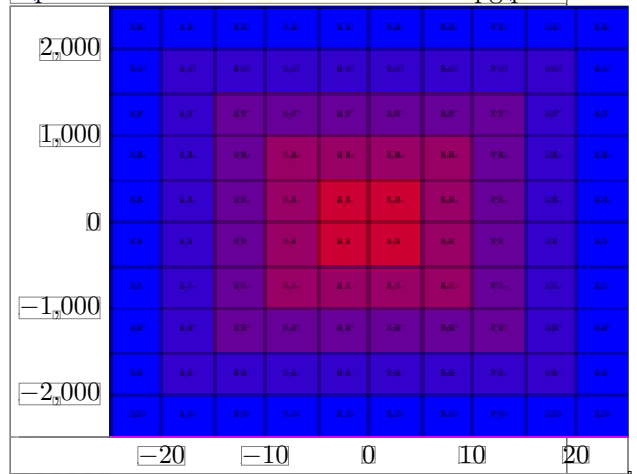
• Use includegraphics with column width.



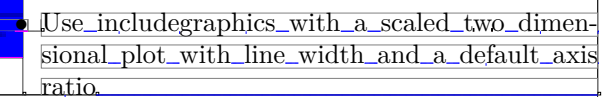
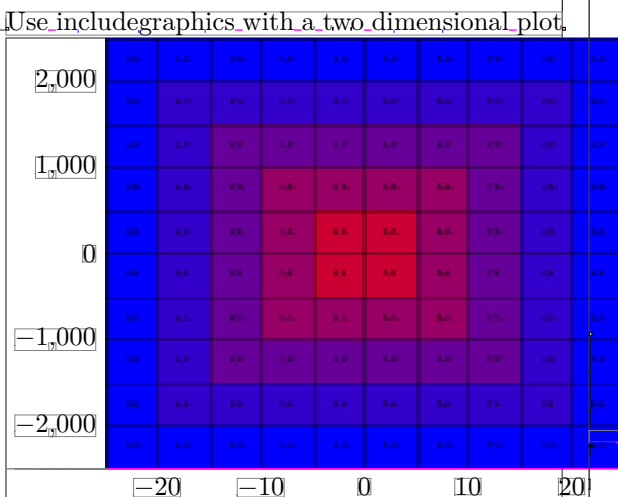
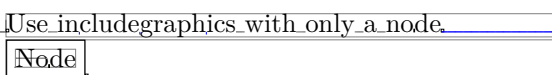
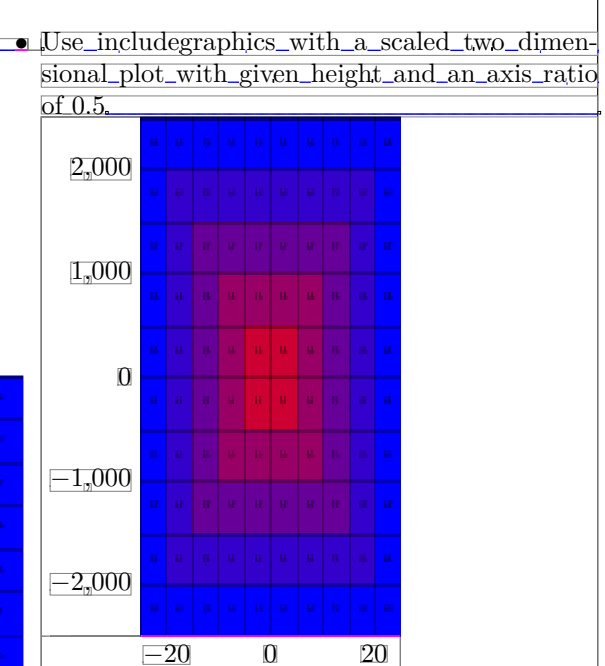
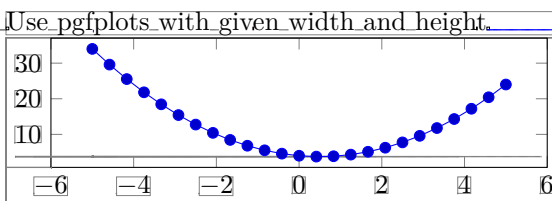
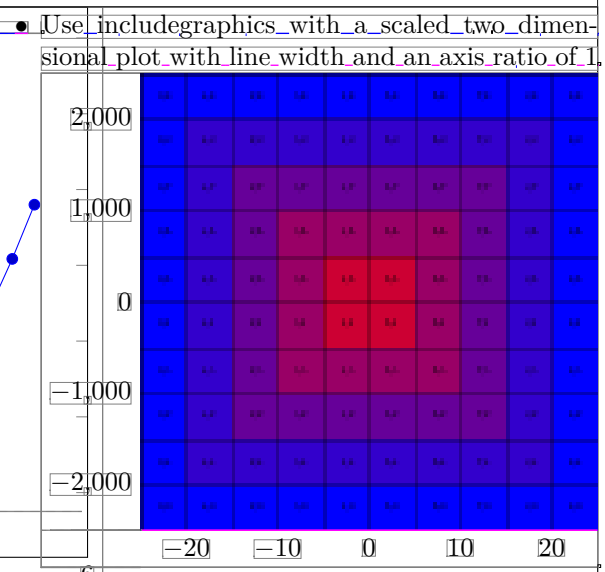
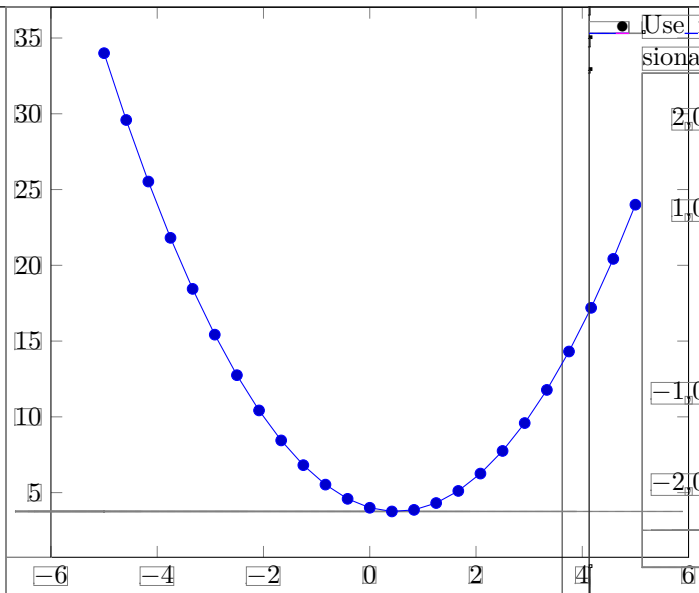
• Use input with pgfplots.

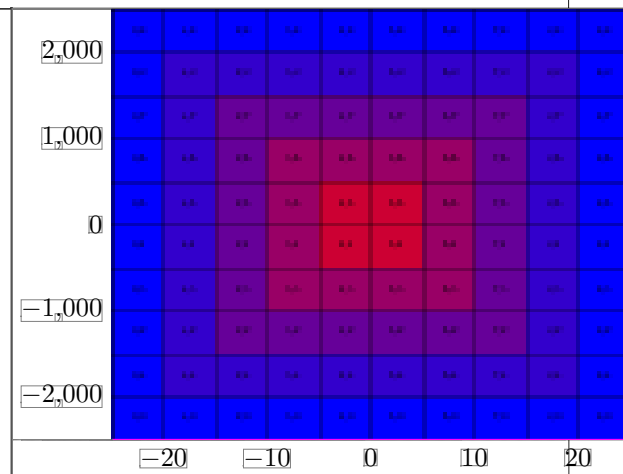
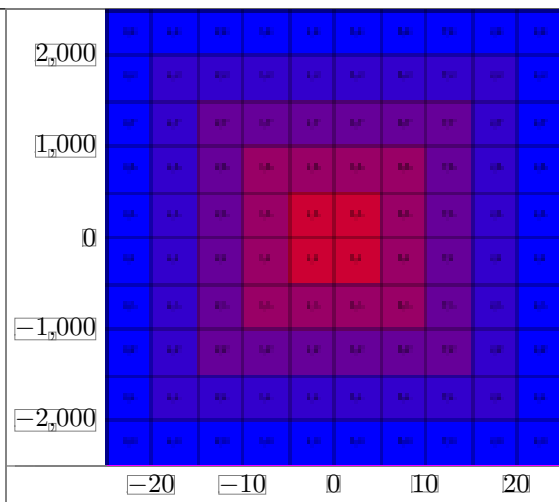


• Input a 2D pgfplots

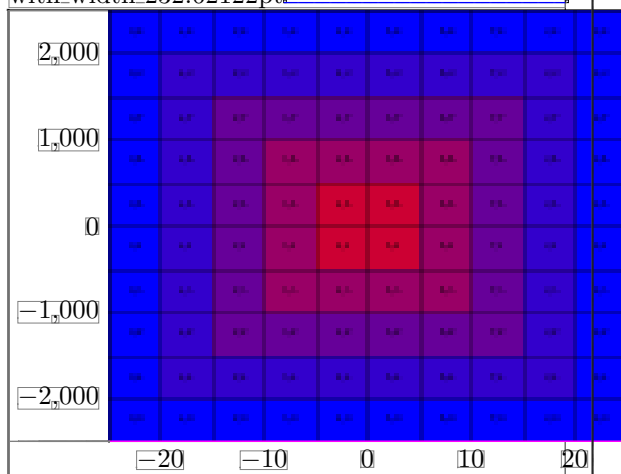


• Use pgfplots without optional parameter.





- Input a two dimensional plot with a tight frame  
with width 232.62122pt.



- Use a two dimensional plot with a tight frame  
with width 232.62122pt.