

## Tests.

- Normal input command.



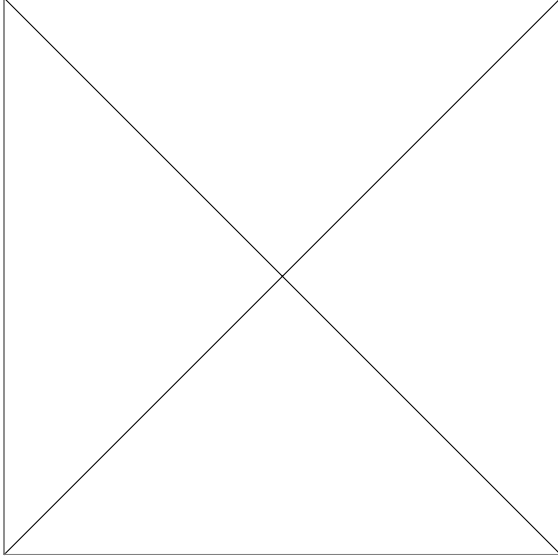
- Use includegraphics with file ending.



- Use includegraphics without file ending.



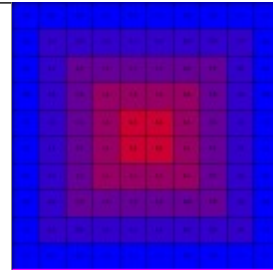
- Use includegraphics with scaling to the column's width.



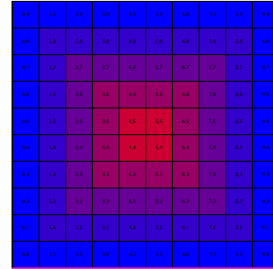
- Use includegraphics with scaling while having column width already.



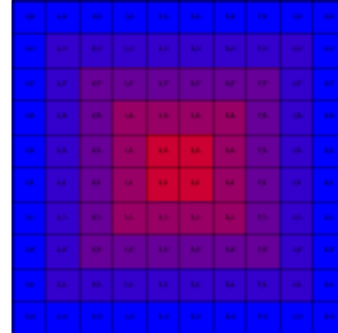
- Use includegraphics with jpg.



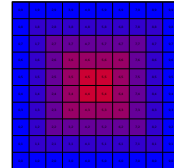
- Use includegraphics with pdf.



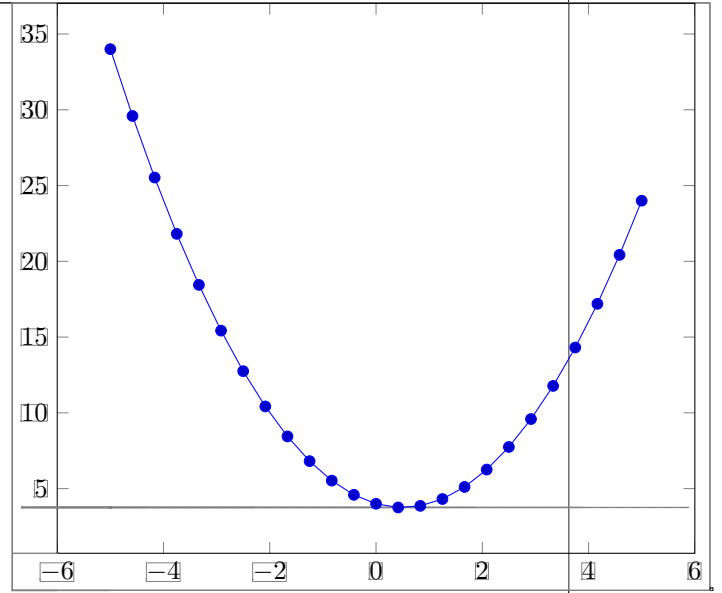
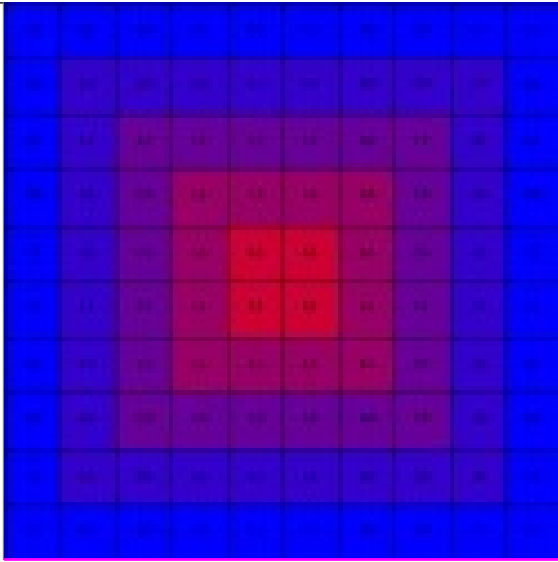
- Use includegraphics with png.



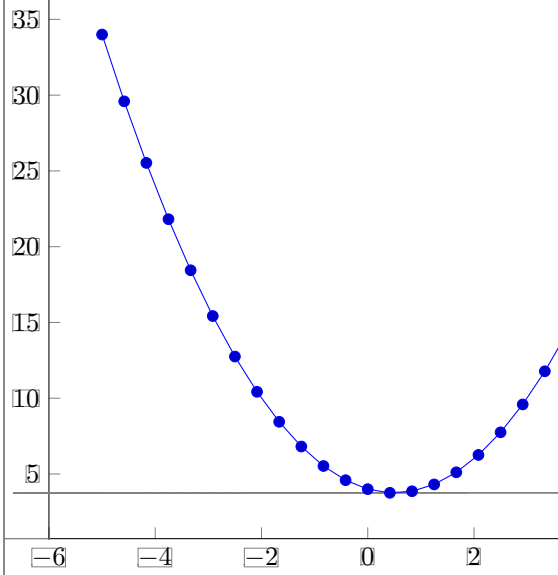
- Use includegraphics with pdf and scaling.



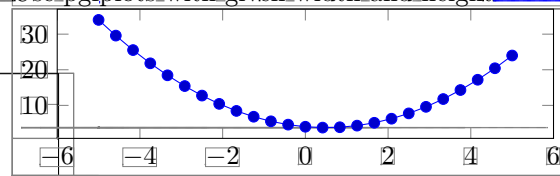
- Use includegraphics with column width.



• Use input with pgfplots.



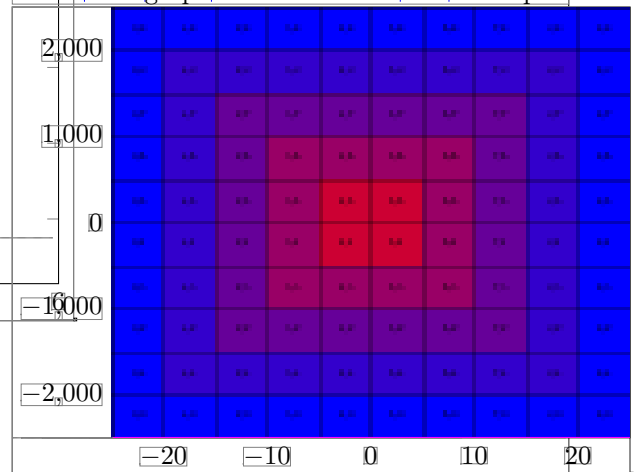
• Use pgfplots with given width and height.



• Use includegraphics with only a node.

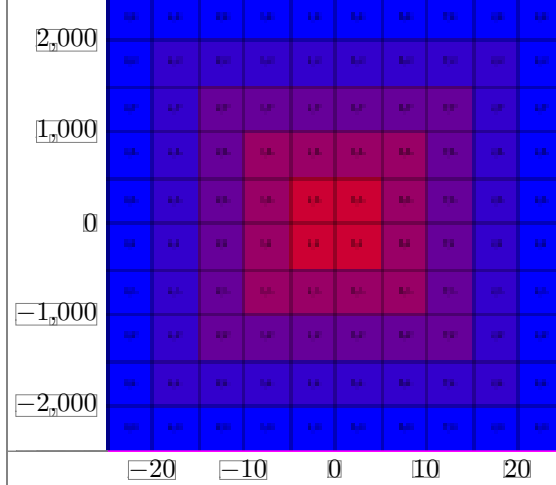
Node

• Use includegraphics with a two dimensional plot.

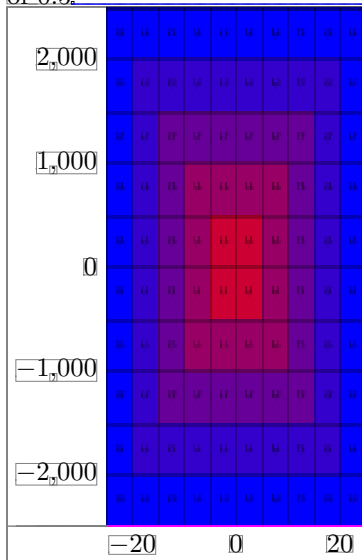


• Use pgfplots without optional parameter.

- [Use includegraphics with a scaled two dimensional plot with line width and an axis ratio of 1.](#)



- [Use includegraphics with a scaled two dimensional plot with given height and an axis ratio of 0.5.](#)



- [Use includegraphics with a scaled two dimensional plot with line width and a default axis ratio.](#)

