

Tests

- Normal input command



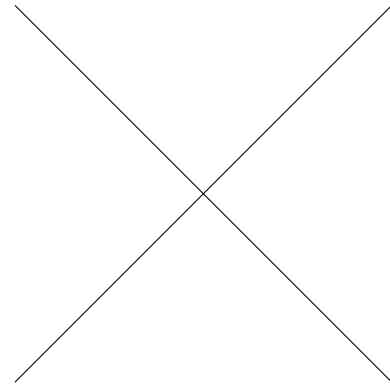
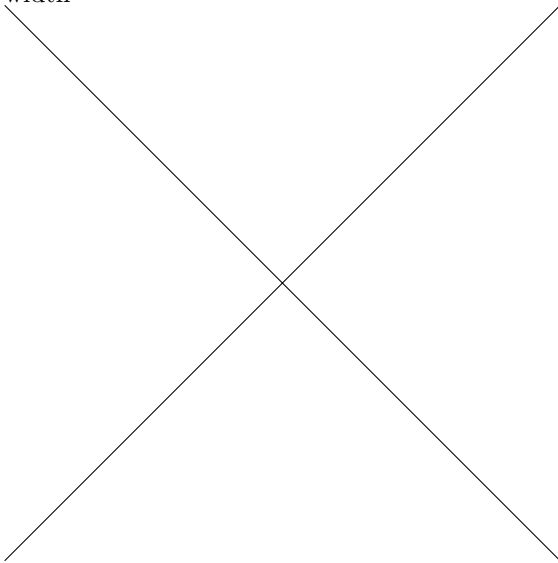
- Use includegraphics with file ending



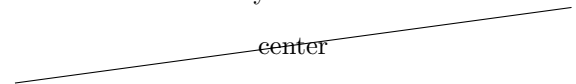
- Use includegraphics without file ending



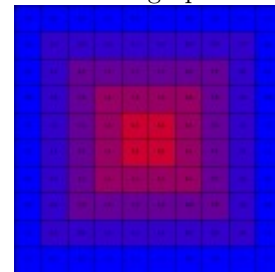
- Use includegraphics with scaling to the column's width



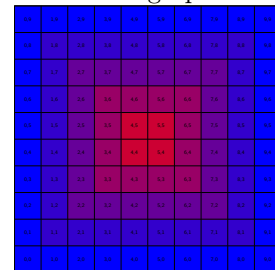
- Use includegraphics with scaling while having column width already



- Use includegraphics with jpg

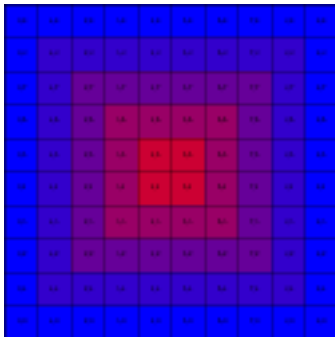


- Use includegraphics with pdf

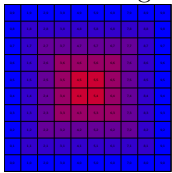


- Use includegraphics with scaling to a dimension

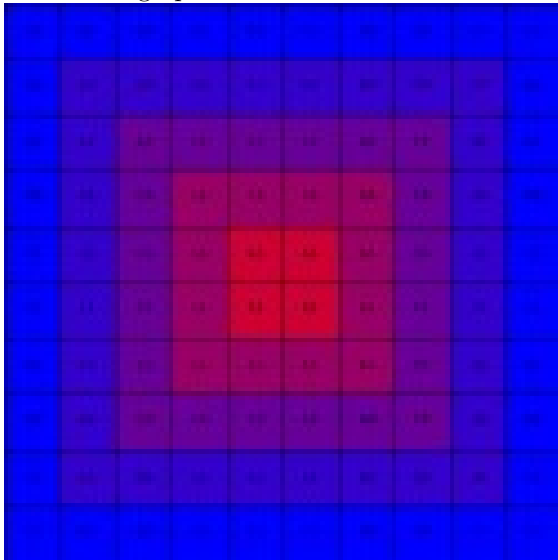
- Use includegraphics with png



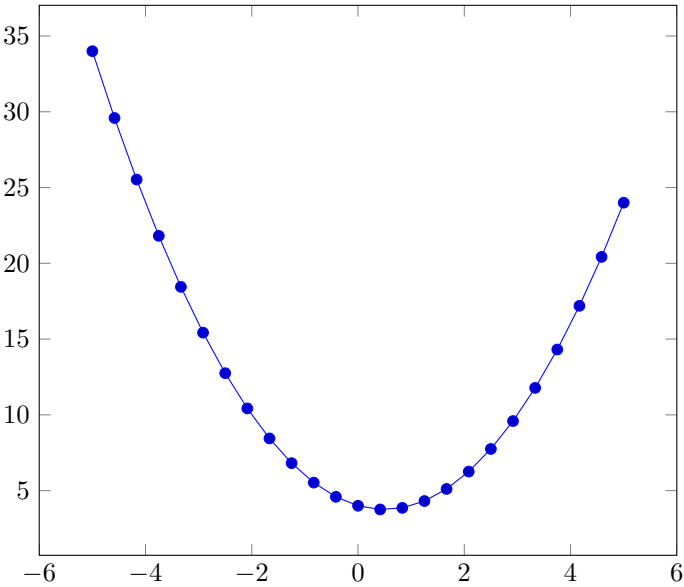
- Use includegraphics with pdf and scaling



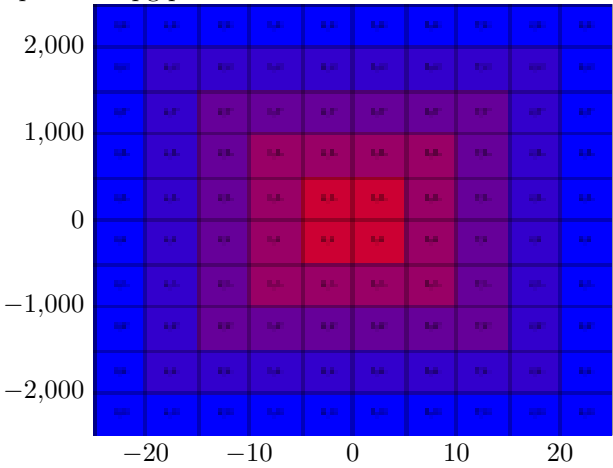
- Use includegraphics with column width



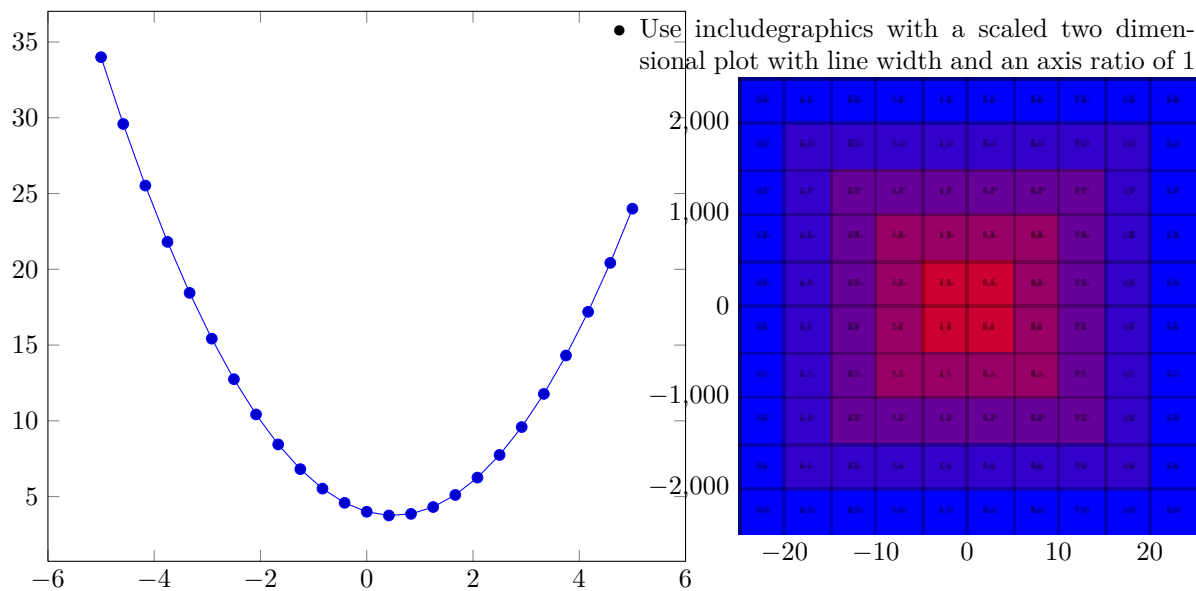
- Use input with pgfplots



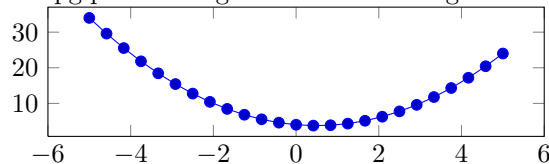
- Input a 2D pgfplots



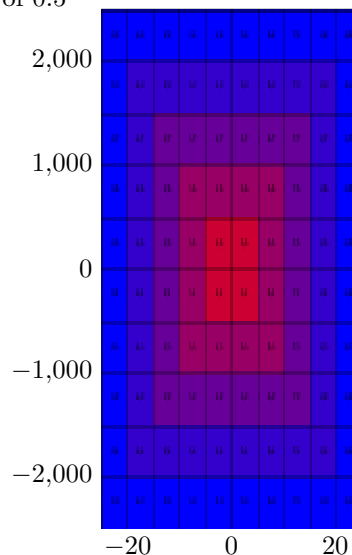
- Use pgfplots without optional parameter



- Use `pgfplots` with given width and height



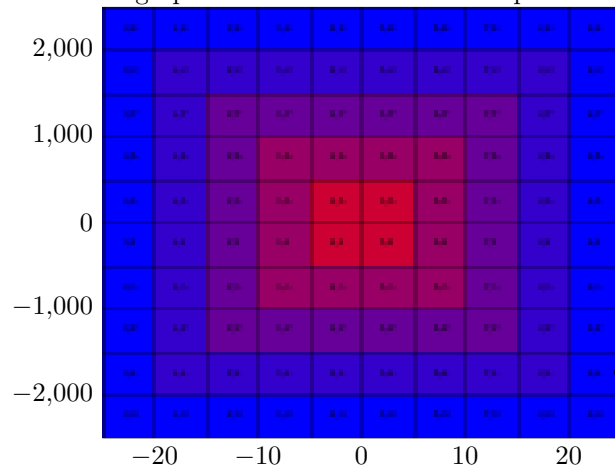
- Use `includegraphics` with a scaled two dimensional plot with given height and an axis ratio of 0.5



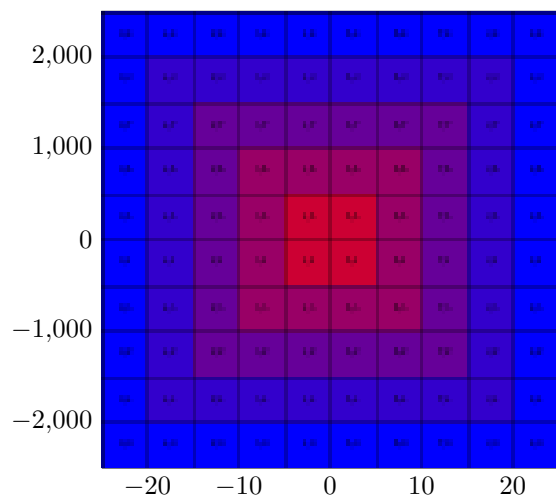
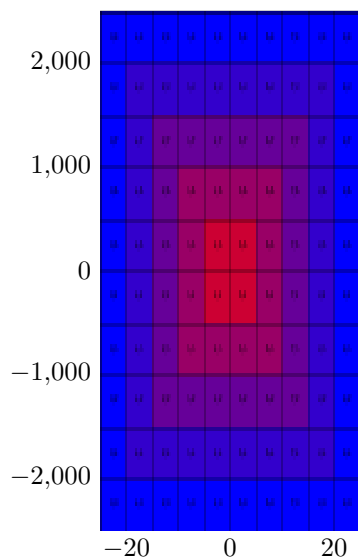
- Use `includegraphics` with only a node

Node

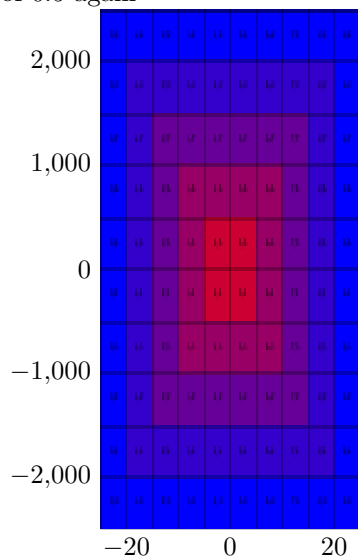
- Use `includegraphics` with a two dimensional plot



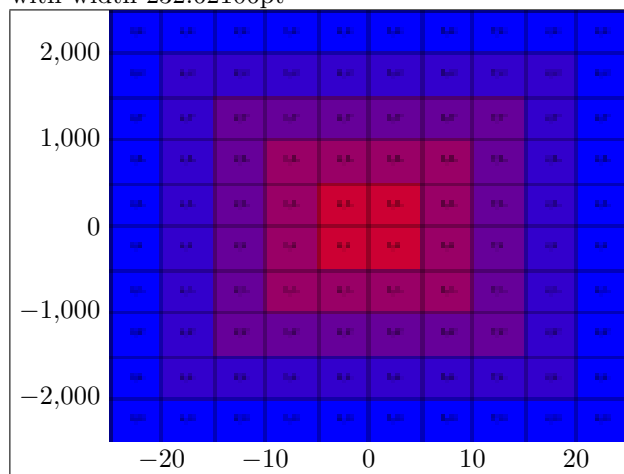
- Use `includegraphics` with a scaled two dimensional plot with given height and an axis ratio of 0.5 and temporarily deactivated externalization



- Use includegraphics with a scaled two dimensional plot with given height and an axis ratio of 0.5 again



- Input a two dimensional plot with a tight frame with width 232.62106pt



- Use includegraphics with a scaled two dimensional plot with line width and a default axis ratio
- Use a two dimensional plot with a tight frame with width 232.62106pt

