

## Tests

- Test that with externalization, no picture is generated multiple times.
- Test that there are no warnings without using externalization.

- Normal input command



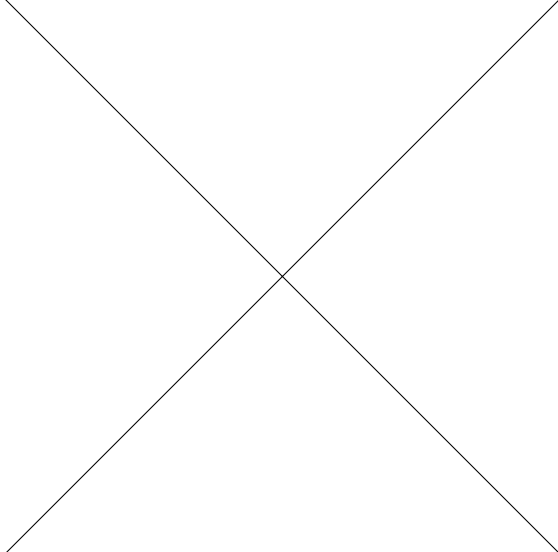
- Use includegraphics with file ending



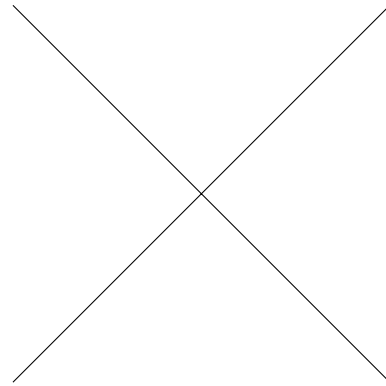
- Use includegraphics without file ending



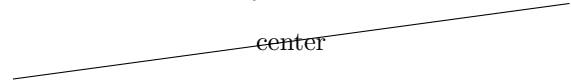
- Use includegraphics with scaling to the column's width



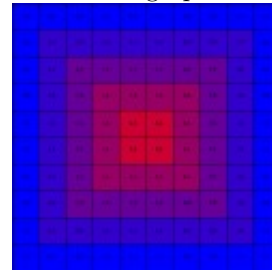
- Use includegraphics with scaling to a dimension



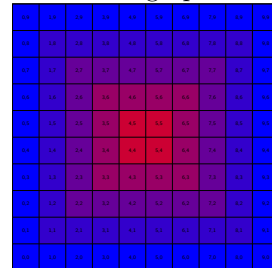
- Use includegraphics with scaling while having column width already



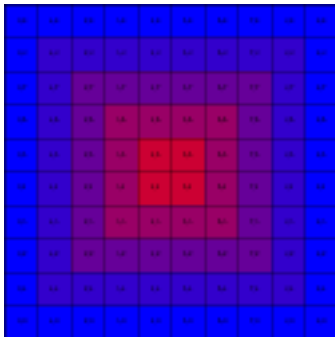
- Use includegraphics with jpg



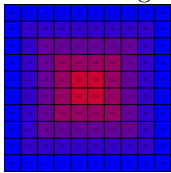
- Use includegraphics with pdf



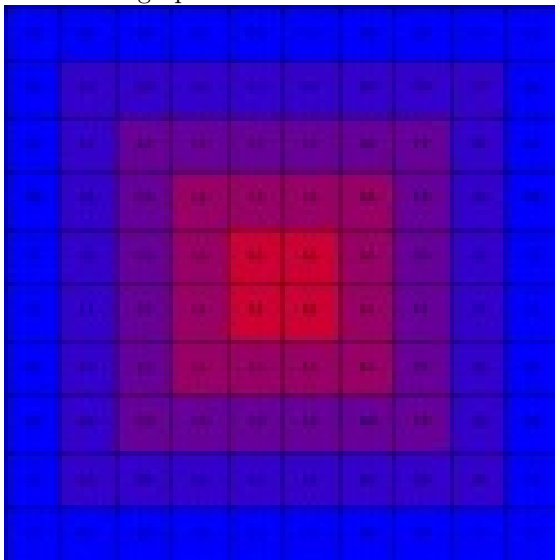
- Use includegraphics with png



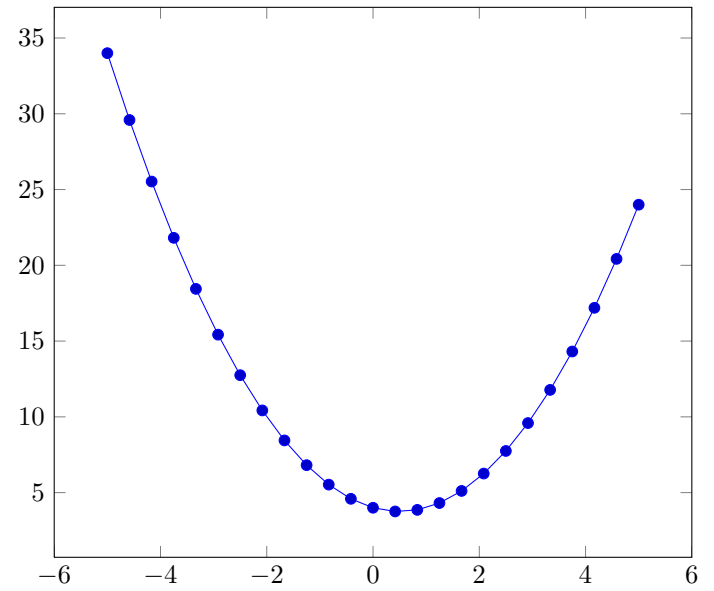
- Use `includegraphics` with `pdf` and `scaling`



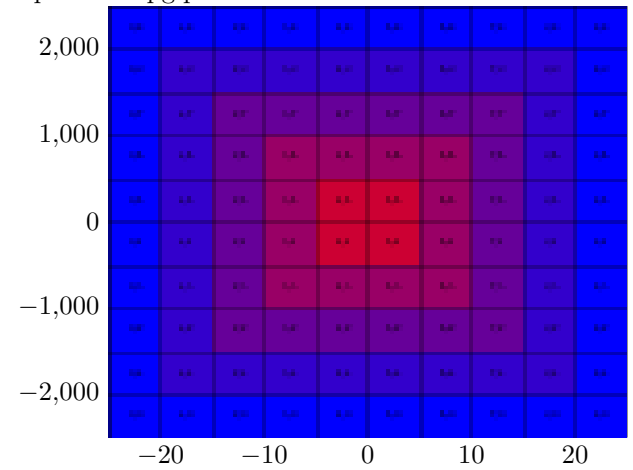
- Use `includegraphics` with `column width`



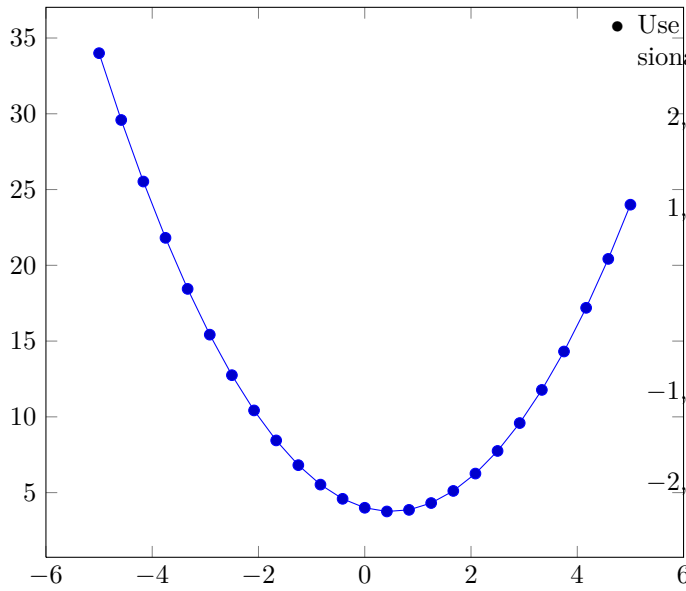
- Use `input` with `pgfplots`



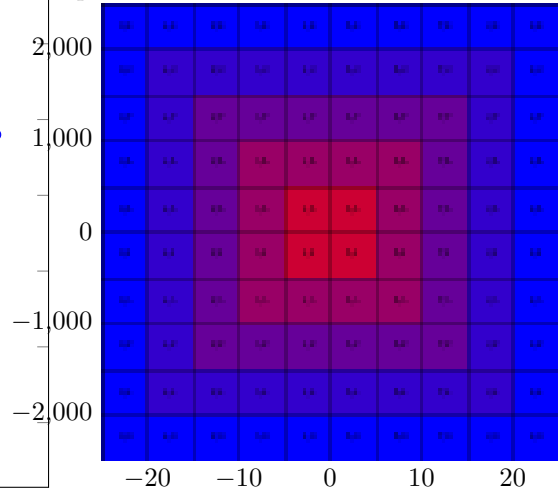
- Input a 2D `pgfplots`



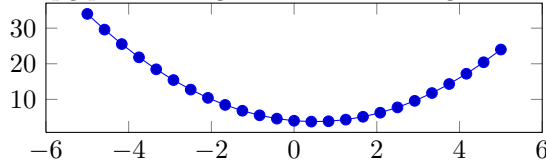
- Use `pgfplots` without optional parameter



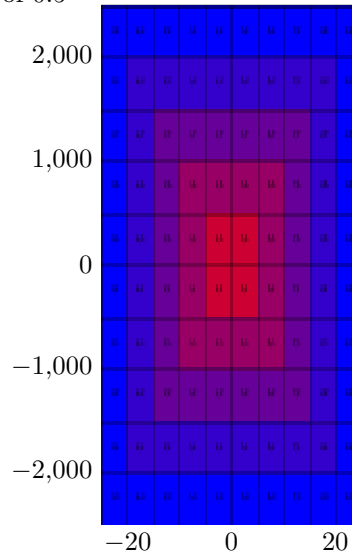
- Use `includegraphics` with a scaled two dimensional plot with line width and an axis ratio of 1



- Use `pgfplots` with given width and height



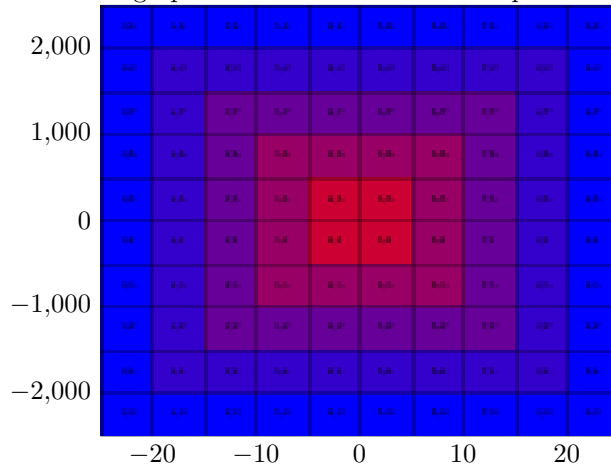
- Use `includegraphics` with a scaled two dimensional plot with given height and an axis ratio of 0.5



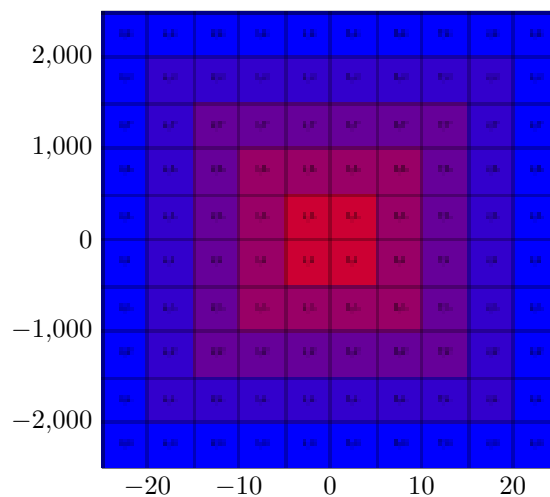
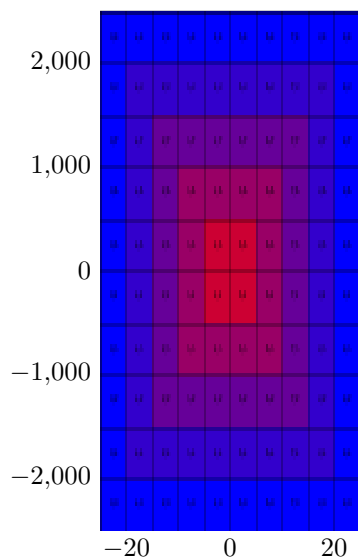
- Use `includegraphics` with only a node

Node

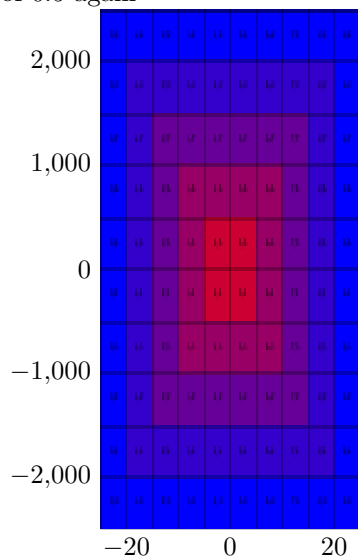
- Use `includegraphics` with a two dimensional plot



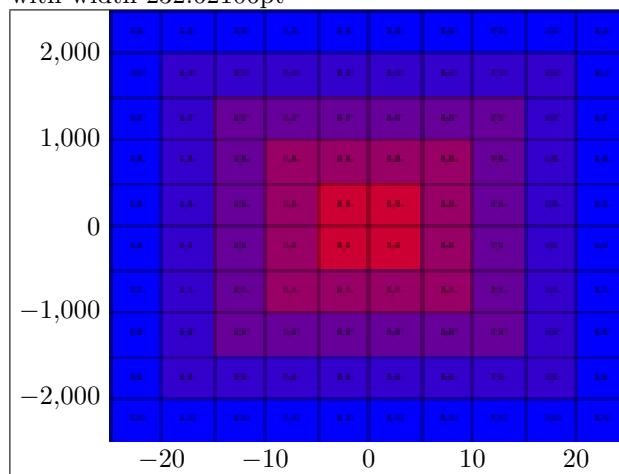
- Use `includegraphics` with a scaled two dimensional plot with given height and an axis ratio of 0.5 and temporarily deactivated externalization



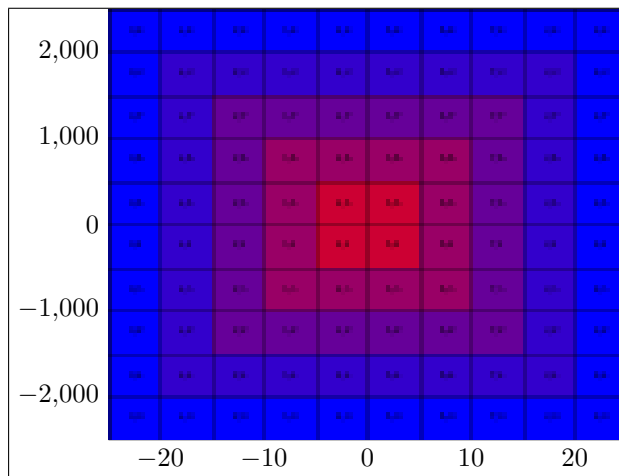
- Use includegraphics with a scaled two dimensional plot with given height and an axis ratio of 0.5 again



- Input a two dimensional plot with a tight frame with width 232.62106pt



- Use includegraphics with a scaled two dimensional plot with line width and a default axis ratio
- Use a two dimensional plot with a tight frame with width 232.62106pt



- Use includegraphics with a histogram of a normal distribution

