

Creating diagrams for chess problems

Version v1.11

Thomas Brand
Bornheim

Stefan Höning
Neuss

2015/1/30

Abstract

It have been more than ten years now, since we last published a documented version of the `diagram.sty`, which is mainly intended to be used for typesetting chess problems. Since 1994 I (Stefan Höning) made a couple of enhancements to the sourcecode of the style, without publishing and putting this into the documentation. We also needed to upgrade to L^AT_EX 2 ϵ . The major change is the documentation language, which is english now.

The style itself tries to collect very detailed information about a chess problem by providing a lot of commands, which you may use to specify the necessary information. There are different reasons for this. One idea was to enable people to read L^AT_EX-diagrams into databases with information as detailed as possible. Otherwise it should be easy to change the layout of a diagram by applying a changed style - not by changing the source.

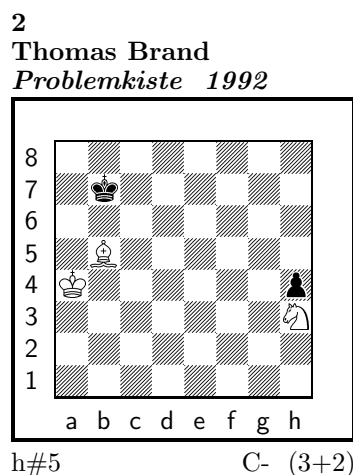
Contents

1	Creating diagrams	3
1.1	An introductory example	3
1.2	Elements of a diagram	4
1.2.1	Collecting the problem information	4
1.2.2	Modifying the layout of the diagram (and the solution)	6
1.2.3	Other commands	8
1.3	Special boards	8
1.3.1	Changing the boardsize	8
1.3.2	Stereo- and Space-Chess-Diagrams	9
1.3.3	Cylindric boards / suppressing frames	10
1.4	Change the coloring of the fields	10
1.4.1	figurine Notation	11
1.4.2	Changes within the board	11
1.5	Misc	12
1.5.1	Chess pieces within normal text	12
1.5.2	Other often used symbols	13
1.5.3	Internationalization	13
1.5.4	When writing books	14
1.5.5	Other useful stuff	14
2	The documentation driver	15
3	The implementation of the style	15

1 Creating diagrams

1.1 An introductory example

Let us first take a look at a simple example which should only show what you have to type into your \LaTeX -code to get nice looking diagrams.



1) Thomas Brand:

1.Ta3 Kc2!, 2.Tf3 e×f3, 3.e3 f4, 4.e2 f5, 5.e1T f6, 6.Th1! (Te7?) f7, 7.Th7 f8D#

2) Thomas Brand:

1.Ka8 Sg1, 2.h3 Ka5, 3.h2 Kb6, 4.h×g1L+ Kc7, 5.La7 Lc6#

To use the package you have to make it available to \LaTeX using `\usepackage{diagram}` inside the preamble of your document.

Then you may use the `diagram` environment to create the diagrams. For the above example I had to type the following:

```
\begin{diagram}
\author{Brand, Thomas}
\source{Problemkiste} \year{1992}
\dedic{Elmar Bartel gew.}
\pieces[2+3]{wKd1, wBe2, sKh8, sBe4, sTa4}
\stip{h\#7}
\sol{1.Ta3 Kc2!, 2.Tf3 e\x f3, 3.e3 f4, 4.e2 f5, 5.e1T f6,
6.Th1! (Te7?) f7, 7.Th7 f8D\#}
\end{diagram}
%
\hfill
%
\begin{diagram}
\setboolean{legend}{true}
\author{Brand, Thomas}
\source{Problemkiste} \year{1992}
\pieces[3+2]{wKa4, wLb5, wSh3, sKb7, sBh4}
\stip{h\#5}
\sol{1.Ka8 Sg1, 2.h3 Ka5, 3.h2 Kb6, 4.h\x g1L+ Kc7, 5.La7 Lc6\#}
\end{diagram}
```

`\putsol`

diagram Any information which belongs to a problem should be put between `\begin{diagram}` and `\end{diagram}`. The above examples contains information for *authors*, *source*, *year of publication*, *stipulation*, *solution* and (in diagram 1) a *dedication*.

This information is shown around a chessboard except the solution, which is collected and put into the output using the `\putsol` command.

1.2 Elements of a diagram



This section describes the elements which may be used inside a `diagram` environment. For most of these elements there is no sense using them between `\begin{diagram}` and `\end{diagram}`. Some of them will not work outside of the environment (like `—`). In case you use these switches anywhere outside you will specify the information for all problems in your surrounding environment (which may be the complete document).

1.2.1 Collecting the problem information

The following information is typically given with a problem:

- \author**
- With the `\author` tag you specify one author or a list of authors. If you specify more than one author, you must separate them with `;`. Normally an author is given as *"surname, givenname"*. You may change the way, how the name is interpreted by \LaTeX using `\normalnames` and `\reversednames`. This `\author` command does only overwrite the default behaviour when used inside a diagram environment.
- \Dr**
\Prof
\ProfDr
- Within the Authors command you should use the commands `\Dr`, `\Prof` and `\ProfDr` to specify these academic titles. So one may switch off the display of these titles — like it is generally done inside *Die Schwalbe*.
- \pieces**
- With `\pieces` you specify the position to be displayed on the board. For each kind of piece you may specify a list of fields. Different lists of fields are separated by `,`. So the general syntax for specifying the position of a specific piece is:
`[color][piece]{rotation of piece}[list of squares];`
e.g. `wTa1h1` should be clear, `nKa4` is a neutral king on a4
`w s n` may be used to specify the color of the piece.
`K D T L S B C E X` may be used to specify the piece. A `C` is used for an imitator, `E` for an equihopper and `X` for a rotated equihopper. You may *not* use an optional rotation with `C`, `E` and `X`.
`R U L` may be used to specify an optional rotation: right, upside-down, left. So you may use `sDUc7` for a grasshopper on c7 — displayed as an upsidedown queen.
The characters used to specify color, piece and rotation may be changed using the `\DefinePieces` command.
You may also optionally specify the number of pieces in your diagram, which then will be used to control your input automatically.

There is also support for an imitator, which is typically displayed as a black filled circle. So `sCf4` will produce the symbol of an imitator. This is shown in diagram 3.

<code>\stipulation</code> <code>\stip</code>	<ul style="list-style-type: none"> • is used to specify the stipulation of the problem, e.g. <code>\stipulation{\#2}</code> may be used to specify a <i>mate in two</i>. There is also an abbreviation <code>\stip</code> for this macro.
<code>\city</code>	<ul style="list-style-type: none"> • may be used to specify the city and country, where the author or the authors live. I use this inside the original section of <i>Die Schwalbe</i>. You should separate multiple cities (for multiple authors) with "; ". There is also a boolean switch <code>showcity</code>, which controls, whether this information is displayed.
<code>\specialdiagram</code>	<ul style="list-style-type: none"> • May be used to suppress the default diagram numbering (which uses a counter) and instead directly providing a diagram "number" which may be an arbitrary text.
<code>\sourcenr</code>	<ul style="list-style-type: none"> • May be used to specify the number which was used for the problem inside an originals section.
<code>\source</code>	<ul style="list-style-type: none"> • May be used to specify the book or magazine where the problem was issued first.
<code>\issue</code>	<ul style="list-style-type: none"> • May be used to specify e.g. the issue of a magazine where the problem was issued.
<code>\pages</code>	<ul style="list-style-type: none"> • May be used to specify the page (or pages) where the problem was issued.
<code>\day</code> <code>\month</code> <code>\months</code> <code>\year</code>	<ul style="list-style-type: none"> • May be used to specify the different parts of the date of publication of the problem. (E.g. for problems issued in the german magazine <i>Die Schwalbe</i> you will typically only specify the <code>\month</code> and the <code>\year</code>. For problems issued in <i>feenschach</i> you may specify a period of months like <code>\months{7-10}</code>.)
<code>\tournament</code> <code>\award</code>	<ul style="list-style-type: none"> • May be used to specify an award and a tournament for the problem.
<code>\dedication</code> <code>\dedic</code>	<ul style="list-style-type: none"> • May be used to specify a dedication which was given by the author of the problem.
<code>\condition</code> <code>\cond</code>	<ul style="list-style-type: none"> • May be used to specify the fairy conditions of a problem. Different conditions should be separated with "; ".
<code>\twins</code>	<ul style="list-style-type: none"> • May be used to specify the different twins of a problem. Different twins should be separated with "; ".
<code>\remark</code> <code>\rem</code>	<ul style="list-style-type: none"> • May be used to specify remarks to the problem. I typically use this to explain fairy pieces on the board. You may also use the abbreviation <code>\rem</code>.
<code>\piecedefs</code>	<ul style="list-style-type: none"> • May be used to explain rotated pieces. An example: <code>\piecedefs{{ws}{TL}{Turm-L\"aufer-J\"ager}; {wn}{SU}{Nachtreiter}}</code> will create  = Turm-Läufer-Jäger  = Nachtreiter under the diagram.

- `\solution` • `\solution` may be used to specify the solution of the problem. Normally this information is not used while displaying the board but it is only collected and may be put into your text using `\putsol`. There is also an abbreviation `\sol`.
- `\sol`
- `\judgement` • May be used to describe the judgement given for a problem, e.g. when you are working on an award or when you are selecting problems for a "best of ..." book.
- `\comment` • May be used to specify some comment on the problem (e.g. the authors original comment.)
- `\themes` • May be used to specify themes displayed in the problem. Different themes should be separated with "; ". When creating a theme index, the themes will automatically be used to create the register.

There are some commands which not only collect information but normally direct result in a change of the diagram. These are:

- `\verticalcylinder` • does not display the outer vertical lines to symbolize a verticalcylindric board.
- `\horizontalcylinder` • does not display the outer horizontal lines to symbolize a horizontalcylindric board.
- `\noframe` • does completely suppress the outer frame e.g. to symbolize a torus board.
- `\noinnerframe` • sometimes you need to suppress the inner frame instead of the outer frame which is achieved by using `\noinnerframe`. You may not use this together with `\noframe`.
- `\gridchess` • displays lines to separates fieldsections for gridchess.

1.2.2 Modifying the layout of the diagram (and the solution)

There are a couple of switches which control the layout of the diagrams. These are typically used more generally, so you may specify these switches outside the `diagram` environment or use them in your own style, which depends on `cpd.sty`.

There are some switches which control the layout of the information which is displayed above a diagram:

- `\diagleft` • displays the information left aligned
- `\diagcenter` • displays the information centered
- `\diagright` • displays the information right aligned
- `\widedias` • is like `\diagcenter` but the information shown above the diagram may span the whole width of the page. So \LaTeX will not wrap long author names.
- `\dianamestyle` Using `\dianamestyle` (or `\solnamestyle`) you may specify how author-names are written above the boards (or before the solutions). You may use this only if you use `\reversednames` (which is the default). Otherwise it is not possible to distinguish between firstname and surname. You must specify one of the following options as parameter to `\dianamestyle` (or `\solnamestyle`):
- `\solnamestyle`

fullname Writes the authorname as *firstname surname*. This is the default.

sirname Writes the *sirname* only.

short Writes an abbreviation of the *firstname* and the *sirname*. The abbreviation is calculated as follows:

- The first letter of the *firstname* will be used.
`\author{Brand, Thomas}` will be displayed as **T. Brand**
- When there is a combined *firstname* separated with a hyphen, each first letter will be used. (see below)
`\author{Reich, Hans-Peter}` will be displayed as **H.-P. Reich**
- When specifying the author name, you may provide the abbreviation for the first name using the form *sirname, firstname/abbreviation*.
`\author{Brand, Thomas/Th.}` will be displayed as **Th. Brand**

noname displays nothing

`\diagnumbering` The same way you may specify `\pagenumbering` you may specify the format the diagrams are numbered using `\diagnumbering` and `\pagenumbering` you may specify **arabic**, **Roman**, **roman**, **Alph** or **alph**. The default used is **arabic**. This command also switches the display for diagram numbers on.

`\setmonthstyle` You may also specify the way a month is displayed using `\setmonthstyle`. There are some boolean switches, which control whether a specific information is displayed. These are as follows:

`piececounter` • This is a \LaTeX boolean, which is used to specify whether the number of pieces is displayed below the board. So you may change its value using `\setboolean{piececounter}{true}` or `\setboolean{piececounter}{false}`.

`showcomputer` • There is a boolean value `computer`, which controls whether the information about a computer proof is displayed or not. This value may be changed using `\setboolean{showcomputer}{true}` or `\setboolean{showcomputer}{false}`
`\nocomputer` For backwards compatibility we support the macros `\nocomputer` and
`\showcomputer` `\showcomputer`.

`showcity` • This is a boolean switch, which controls whether the information gathered using the `\city` command is displayed. The default of this value is **false**.

`showacademictitle` • This is a boolean switch, which controls whether academic titles `\Dr`, `\Prof` or `\ProfDr` — typically used within the `\author` command — are displayed. The default is **true**.

`legend` • This boolean controls whether a legend is displayed. The default value of this value is **false**. When legends are displayed the distance between inner and outer frame is automatically adjusted.

`\notcomputerproofedsymbol` You may specify the text, which is used indicate, whether a problem is
`\computerproofedsymbol` proofed by a computer. To specify the symbol for a problem, which is proofed, is created by `\computerproofedsymbol`. To specify the symbol for a problem, which is not computer proofed, is created by `\notcomputerproofedsymbol`. You may redefine these commands by standard \LaTeX means (`\renewcommand`).

`\selectelchfont` You may specify which font is used for the chesspieces. There are two possible fonts:

pk for the font which was originally used in the german magazine *Problemkiste* ♔♚♛♜♝♞♟♠♡♢♣♤♥♦♧♨

fs for the font which was first used (and was created for) the magazine *feenschach* ♔♚♛♜♝♞♟♠♡♢♣♤♥♦♧♨

`\diagramx` In analogy to the defaults for fontsizes of a document you may specify sizes
`\diagramxi` of the fonts used in a diagram. The default will be set according to the fontsize
`\diagramxii` specified as the `\documentclass` option.

1.2.3 Other commands

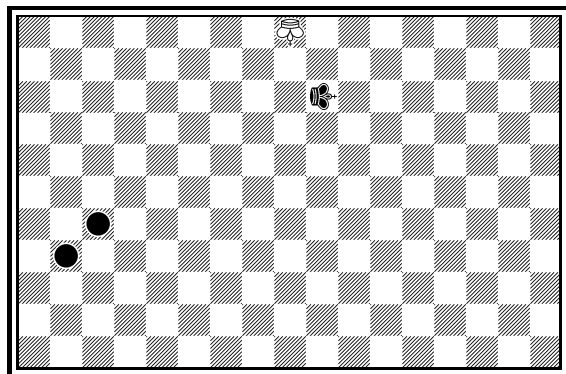
- `\label` • This overrides the normal `\label` definition such that the diagram number is displayed when using `\ref` instead of the page number.
- `\diagnum` • This macro expects a number as a parameter. The number will be used to (re-)initialize the diagram number counter. With this command the output of diagram numbers also is switched on. It must be used outside the `diagram` environment. As an optional parameter you may specify something, which will be used as prefix before the automatically updated diagram numbers. E. g. the command `\diagnum[T-]{4}` will produce the following diagram numbers for the following diagrams: **T-4**, **T-5**, **T-6**, ...

1.3 Special boards

1.3.1 Changing the boardsize

`diagram[]` Instead of using a boardsize of 8×8 some fairy problems need smaller or larger boards. This can be achieved by specifying the rows and columns as an optional parameter to the `\begin{diagram}` environment. You first have to specify the lines and then the rows as the following examples shows.

3



C- (1+1)

is created by

```
\begin{diagram}[17x11]
\label{bigdia}
\pieces{wKUi{11}, sKRj9, sCc5b4}
\end{diagram}
```

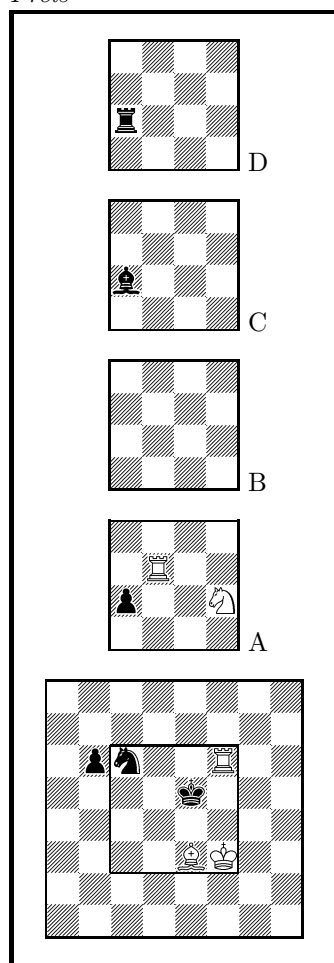
As you can see in the example, pieces are set using the `\pieces` macro. When using boards with more than 8 lines you have to continue with characters **i**, **j**, **k**, ... In a board with more than 9 rows you have to specify the rows in curly braces `{ }` as shown in the example.

1.3.2 Stereo- and Space-Chess-Diagrams

`stereodiagram`
`spacediagram`

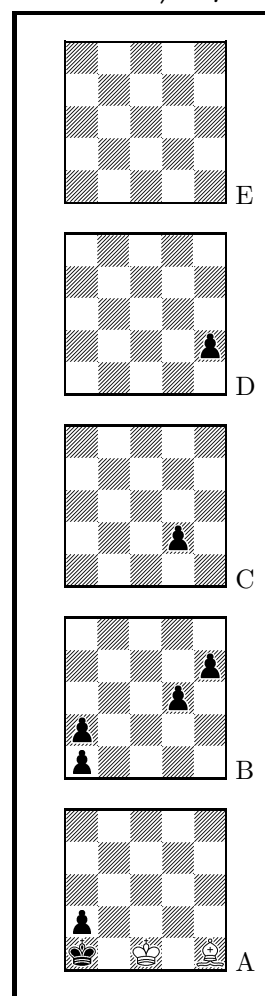
Other boards which are used from time to time are stereo chess or space chess boards (although there are quite few people which really have such boards!). To create these boards you just have to use either the `stereodiagram` or `spacediagram` environment instead of the normal `diagram` environment. Here is an example:

4
Gerhard W. Jensch
3104. feenschach 1980
Preis



#9 C- (5+6)

5
T. R. Dawson
6595. Fairy Chess
Review 12/1945



#2 C- (2+8)

These diagrams have been produced by the following code:

```
\begin{stereodiagram}
\author{Jensch, Gerhard W.}
\sourcenr{3104.}
\source{feenschach}
\year{1980}
```

```

\award{Preis}
\pieces{wKf3, wTf6d5A, wLe3, wSf4A, sKe5, sTc4D, sLc4C, sSc6, sBb6c4A}
\stip{\#9}
\end{stereodiagram}
\hfill
\begin{spacediagram}
\author{Dawson, T. R.}
\sourcenr{6595}.
\source{Fairy Chess Review}
\month{12}
\year{1945}
\pieces{wKc1A, wLe1A, sKa1A, sBa2Aa1Ba2Bd3Be4Bd2Ce2D}
\stip{\#2}
\end{spacediagram}

```

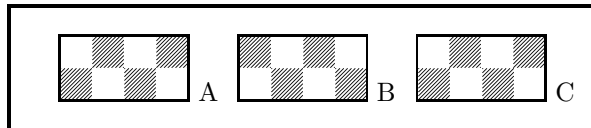
The main change is within the notation of the pieces, but people knowing space- or stereo-chess problems see that the notation is just one would expect.

`\spacelayout` Sometimes one would like show the different planes of a space diagram from left to right. This may be switched using the `\spacelayout` command, which takes one parameter:

vertical for planes organized bottom up

horizontal for planes organized left to right

6



C- (0+0)

Is produced by

```

\begin{spacediagram}[4x2x3]
\spacelayout{horizontal}
\end{spacediagram}

```

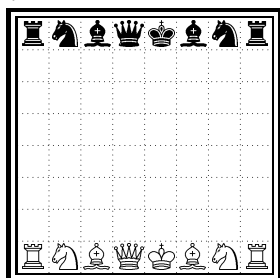
1.3.3 Cylindric boards / suppressing frames

`\horizontalcylinder` To stylize a cylindric board one typically does not show parts of the frame. When using `\verticalcylinder` the horizontal lines of the outer frame will not be drawn. `\horizontalcylinder` suppresses the drawing of the vertical lines of the outer frame. Using `\noframe` completely suppresses the outer frame. `\noinnerframe` suppresses the innerframe. In case of stereo- or spacechess-diagrams `\verticalcylinder`, `\horizontalcylinder` and `\noframe` suppresses the inner frame.

1.4 Change the coloring of the fields

`\allwhite` The `allwhite` boolean can be used to have all white squares. Therefore dotted lines are produced to separate the squares. For convenience we provide a command `allwhite` which switches the value of the `allwhite` boolean to true.

7



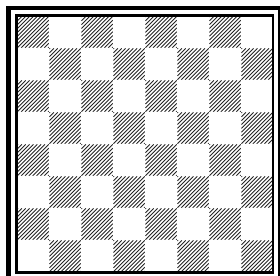
C- (8+8)

This was produced by:

```
\begin{diagram}
\allwhite
\pieces{wKe1, wDd1, wTa1h1, wLf1c1, wSb1g1, %
sKe8, sDd8, sTa8h8, sLf8c8, sSb8g8}
\end{diagram}
```

`\switchcolors` The boolean `switchcolors` may be used to switch the coloring of white and black fields. For convenience we provide a command `switchcolors` which switches the value of the `switchcolors` boolean to true.

8



C- (0+0)

1.4.1 figurine Notation

`figurine` Instead of using the `diagram`, `stereodiagram` or `spacediagram` environment one may use the `figurine` environment. This suppresses the diagram output and produces a figurine notation inside the current text.

1.4.2 Changes within the board

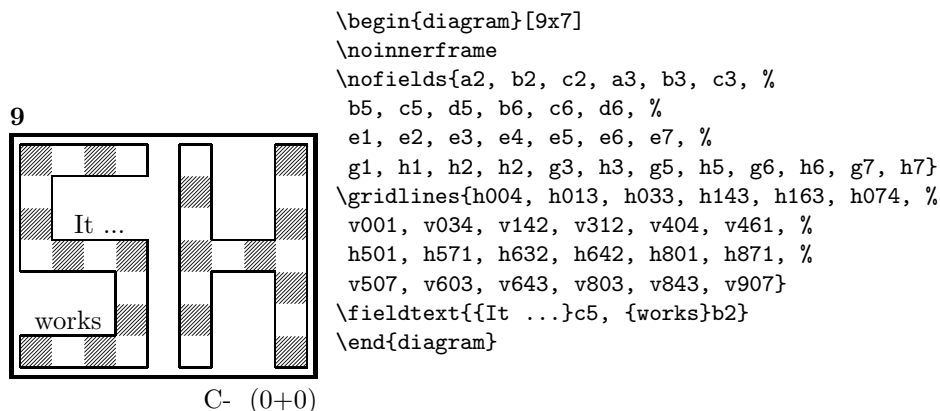
`\nofields` You may remove single fields by using the `\nofields` or `\nosquares` command.
`\nosquares` Using this command does make sense for empty black fields only. This command expects a list of squares separated by `''`, `''`. You may also use this command within a stereo- or space-diagram. In this case you must specify the fields the same way you do it inside the `\pieces` command.
`\fieldframe` You may specify single fields, which should be surrounded by a frame. This is possible using the `\fieldframe` command. You must specify the list of fields which should have frames the same way you specify fields within the `\nofields` command.
`\gridlines` A more general form of lines within diagrams is possible by using the `\gridlines` command. You may specify a list of horizontal or vertical lines within the diagram. Different lines should be separated by `''`, `''`. A single line must be specified as:

[plane](v or h)(x-coordinate)(y-coordinate)(length in squares)

You must specify a plane in case of stereo- or space-chess only. For a vertical line starting at the lower left corner of "c2" ending at the upper left corner of "c8" the command to use is: `\gridlines{v217}`. Concerning the coordinates and length specifications you should pay attention to put values greater 9 in curly braces { }.

`\fieldtext` Sometimes you need to show text on some squares. This is done using the `\fieldtext` command. The syntax for a single text is: {Text}(x-coordinate)(y-coordinate)

Now an example how to use `\gridlines`, `\nofields` and `\fieldtext` to create some "Letter-Board" with text inside.











1.5 Misc

1.5.1 Chess pieces within normal text

Sometimes you may need symbols of chess pieces within your normal text, e.g. to show the *Viele-Väter-Stellung* ♖c8, ♗b6, ♘a8, ♙a7. This is possible by `{\wK}c8`, `{\wB}b6`, `{\sK}a8`, `{\sB}a7`. Additionally you may use some of these symbols:

- `\swL` ♖ a white bishop on a black square
- `\ssL` ♜ a black bishop on a black square
- `\wNr` ♞ a white nightrider
- `\nNr` ♞ a neutral nightrider
- `\sNr` ♞ a black nightrider
- `\wGh` ♫ a white grashopper
- `\nGh` ♫ a neutral grashopper
- `\sGh` ♫ a black grashopper
- `\Imi` ● an imitator, you may also use the **Circle** notation:
- `\wC` ○ a white circle

<code>\nC</code>		a neutral circle
<code>\sC</code>		a black circle
<code>\wE</code>		a white equihopper
<code>\sE</code>		a black equihopper
<code>\nE</code>		a neutral equihopper
<code>\wX</code>		a white rotated equihopper
<code>\sX</code>		a black rotated equihopper
<code>\nX</code>		a neutral rotated equihopper

1.5.2 Other often used symbols

The style also defines commands for other symbols, which are often used within the declaration of twins or when writing a solution:


<code>\set</code>	<code>*</code>	setplay
<code>\ra</code>	\rightarrow	a left to right arrow
<code>\lra</code>	\leftrightarrow	a double ended arrow
<code>\O0</code>	0-0	king side castling
<code>\O00</code>	0-0-0	queen side castling
<code>\x</code>	\times	for "takes"
<code>\any</code>	\sim	for any move (you may not simply use a \sim within your text because \TeX handles this as a protected space)

1.5.3 Internationalization

`\DefinePieces` This part is relevant for people who do not like the german notation for pieces and therefore want to change this within their sources. Using the german notation, you specify the color of a piece as **w**, **s** or **n**, the type of a piece as **K**, **D**, **T**, **L**, **S**, **B** and a possible rotation of a piece as **L**, **R** or **U**. To use another notation you may use the `\DefinePieces` command which takes 3 parameters.

1. the letters used to specify the colors of the pieces using the order white, black, neutral
2. the letters used to specify the type of a piece using the order king, queen, rook, bishop, knight, pawn. You may not use the characters **C**, **E** and **X**, because these are used for Circle, Equihopper and rotated Equihopper.
3. the letters used to specify an optional rotation using the order left-turned, right-turned, upside-down. You must use capital letters for this.

When using a `\DefinePieces` command, the commands are changed to its next usage (or to the end of the document). The command not only changes the pieces you may use within the `\pieces` command but also defines commands to be used within normal text, as the following example shows:

```
\DefinePieces{wbn}{KQRBNP}{LRU}
\wDU\bKR\bwB
creates 
```

1.5.4 When writing books

`\develop` To simplify your writings you may use the macro `\develop`. This will create the following additional information during developement:

- when you use `\label` in your diagrams the label will be shown at the left upper corner of the diagram.
- The given label will also be shown inside the solution and also in any register entry.
- when you have specified a `\judgement` this information will be put into the solution.

Most books on chessproblems contain registers for authors, sometimes also on themes and sources. As you already collect all these information very detailed within the `diagram` environment the generation of registers is very simple.

`\makeaindex`
`\authorindex` To create a registers of authors you need to put the `\makeaindex` command inside the preamble of your document. This instructs latex to write an intermediate file containing information about authors and the numbers of the diagrams.¹ After a first L^AT_EX run on your document, you need to convert the intermediate file. This may be done with the `makeindex` program, which will typically called like

```
makeindex -o <filename>.and <filename>.adx
```

The resulting register may be put into your document using the `\authorindex` command.

`\makesindex`
`\sourceindex`
`\maketindex`
`\themeindex` Like an index for authors you may also create indices for sources and/or themes. For an source register you need to put `\makesindex` into your document preamble; for a theme register the command is `\maketindex`. The conversion commands for the intermediate files are

```
makeindex -o <filename>.snd <filename>.sdx
```

for the source register and

```
makeindex -o <filename>.tnd <filename>.tdx
```

for the theme register.

The source register is inserted into the text using `\sourceindex` and the theme register using `\themeindex`.

1.5.5 Other useful stuff

`\solpar` In some environments — like `window` — the use of `\par` leads to unwanted effects. Therefore we use the command `\solpar` inside the definition of `\@dia@solution`, which is used to display a single solution when using

¹Normally registers contain page numbers but with chess problems normally people refer to the diagram numbers.

`\putsol`. You may use `\renewcommand{\solpar}` to provide another definition of `\solpar` in such situations.

2 The documentation driver

The following code will generate the documentation. Since it is the first piece of code in the file, the documentation can be obtained by simply processing the file with $\text{\LaTeX 2}_{\epsilon}$.

```

1 <*driver>
2 \documentclass[a4paper]{article}
3 \usepackage{doc}
4 \usepackage{diagram}
5 \EnableCrossrefs
6 \CodelineIndex
7 \RecordChanges
8 \begin{document}
9 \DocInput{diagram.dtx}
10 \end{document}
11 </driver>

```

3 The implementation of the style

Specifies the preamble of our style file.

```

12 <*style>
13 \ProvidesPackage{diagram}[2015/01/30]

```

`\DefaultDiagramSize` The `\DefaultDiagramSize` may be used in code to switch to the default diagram size. As this depends on the documents default font size we use the same option and execute *10pt* as default.

```

14 \newcommand*{\DefaultDiagramSize}{}
15 \DeclareOption{10pt}{\renewcommand*{\DefaultDiagramSize}{\diagramx}}
16 \DeclareOption{11pt}{\renewcommand*{\DefaultDiagramSize}{\diagramxi}}
17 \DeclareOption{12pt}{\renewcommand*{\DefaultDiagramSize}{\diagramxii}}
18 \ExecuteOptions{10pt}

19 \ProcessOptions
20 \AtBeginDocument{\DefaultDiagramSize}

21 \RequirePackage{ifthen}
22 \RequirePackage{calc}
23 \RequirePackage{pstricks}

```

Now we declare some constants to unify its usage within the style file.

```

24 \chardef\f@ur=4
25 \chardef@ight=8
26 \newcount\elchfont
27
28 \chardef@pkelch=0
29 \chardef@fselch=1
30
31 \newcount\dia@type
32

```

```

33 \newboolean{@textproblem}
34 \setboolean{@textproblem}{false}
35 \def\textproblem{\setboolean{@textproblem}{true}\let\dia@stipulation=\relax}
36
37 \newboolean{@solafterdiagram}
38 \setboolean{@solafterdiagram}{false}
39 \def\solafterdiagram{\setboolean{@solafterdiagram}{true}\ignorespaces}
40
41 \newif\if@vframe\@vframetrue
42 \newif\if@hframe\@hframetrue
43 \newif\if@leaveOuter\@leaveOutertrue
44
45 \newif\if@shortform
46
47 \newif\ifspace@vertical
48 \def\spacehorizontal{\space@verticalfalse}
49
50 \newif\ifdi@no
51 \newcounter{board@nr}
52 % \newif\iffigcnt
53 \newboolean{piececounter}
54 \newcount\r@w
55 \newcount\lin@
56 \newcount\pl@ne
57 \newcount\current@plane
58
59 \newcount\w@cnt
60 \newcount\b@cnt
61 \newcount\n@cnt
62 \newboolean{showcity}
63 \setboolean{showcity}{false}
64 \newboolean{showacademictitle}
65 \setboolean{showacademictitle}{true}
66 \newboolean{legend}
67 \setboolean{legend}{false}
68
69 \newcount\@blackfield
70 \newboolean{allwhite}
71 \setboolean{allwhite}{false}
72 \newcommand{\allwhite}{\setboolean{allwhite}{true}}
73 \newcounter{field@border}
74 \newcount\@whitefield
75 \newboolean{switchcolors}
76 \setboolean{switchcolors}{false}
77 \newcommand{\switchcolors}{\setboolean{switchcolors}{true}}

```

We have counters for each color to count the pieces on the board.

```

78 \newboolean{cpd@checkPieceCounts}
79 \newcounter{cpd@defWhitePieces}
80 \newcounter{cpd@defBlackPieces}
81 \newcounter{cpd@defNeutralPieces}
82
83 \newcounter{cpd@whitePieces}
84 \newcounter{cpd@blackPieces}
85 \newcounter{cpd@neutralPieces}

```

```

86
87 \newcommand{\cpd@stepcounterWhite}{\stepcounter{cpd@whitePieces}}
88 \newcommand{\cpd@stepcounterBlack}{\stepcounter{cpd@blackPieces}}
89 \newcommand{\cpd@stepcounterNeutral}{\stepcounter{cpd@neutralPieces}}
90 \global\let\cpd@stepcounterPieces\relax
91
92 \newcount\help@a
93 \newcount\help@b
94
95 \newbox\dia@box
96 \newbox\@cnt@box
97 \newdimen\@cnt@wd
98 \newbox\@stip@box
99
100 \newdimen\topdist\topdist\z@
101 \newbox\@test@box
102 \newdimen\@test@dimen
103 \newif\if@left
104
105 \newcount\brd@ff
106
107 \newdimen\dia@lineskip
108
109 \newdimen\board@width
110 \newdimen\bd@width
111 \newdimen\head@width
112 \newdimen\sq@width
113
114 \newdimen\grid@width
115 \newdimen\inner@frame
116 \newdimen\outer@frame
117 \newdimen\space@frame
118 \newdimen\v@frame@dist
119 \newdimen\h@frame@dist
120 \newdimen\space@frame@dist
121 \newdimen\v@space@dist
122 \newdimen\h@space@dist
123
124 \newbox\sq@box
125 \newbox\plane@box

```

We need a lot of token registers to register the information from within the `diagram` environment. These token registers are defined here. Initially each token register is defined to contain `\relax`, which serves as an *end-marker* when parsing lists.

```

126 \newtoks\typis@tk\typis@tk={\relax}
127 \newtoks\label@tk\label@tk={\relax}
128 \newtoks\sol@tk\sol@tk={\relax}
129 \newtoks\number@tk\number@tk={\relax}
130 \newtoks\aut@tk\aut@tk={\relax}
131 \newtoks\city@tk\city@tk={\relax}
132 \newtoks\sourcenr@tk\sourcenr@tk={\relax}
133 \newtoks\source@tk\source@tk={\relax}
134 \newtoks\day@tk\day@tk={\relax}

```

```

135 \newcount\from@month\from@month=\z@
136 \newcount\to@month\to@month=\z@
137 \newtoks\year@tk\year@tk={\relax}
138 \newtoks\issue@tk\issue@tk={\relax}
139 \newtoks\pages@tk\pages@tk={\relax}
140 \newtoks\tournament@tk\tournament@tk={\relax}
141 \newtoks\award@tk\award@tk={\relax}
142 \newtoks\after@tk\after@tk={\relax}
143 \newtoks\version@tk\version@tk={\relax}
144 \newtoks\correction@tk\correction@tk={\relax}
145 \newtoks\dedic@tk\dedic@tk={\relax}
146 \newtoks\fidealbum@tk\fidealbum@tk={\relax}
147 \newtoks\theme@tk\theme@tk={\relax}
148 \newtoks\twins@tk\twins@tk={\relax}
149 \newtoks\judgement@tk\judgement@tk={\relax}
150 \newtoks\comment@tk\comment@tk={\relax}
151 \newtoks\computer@tk\computer@tk={-}
152 \newtoks\nofields@tk\nofields@tk={\relax}
153 \newtoks\fieldframe@tk\fieldframe@tk={\relax}
154 \newtoks\gridlines@tk\gridlines@tk={\relax}
155 \newtoks\pieces@tk\pieces@tk={\relax}
156 \newtoks\fieldtext@tk\fieldtext@tk={\relax}
157 \newtoks\text@tk\text@tk={\relax}
158 \newtoks\stipulation@tk\stipulation@tk={\relax}
159 \newtoks\condition@tk\condition@tk={\relax}
160 \newtoks\remark@tk\remark@tk={\relax}
161 \newtoks\piecedefs@tk\piecedefs@tk={\relax}

```

To remember, which information has been specified, we define \TeX -booleans for each command.

```

162 \newif\if@label\@labelfalse
163 \newif\if@number\@numberfalse
164 \newif\if@special\@specialfalse
165 \newif\if@auth@r\auth@rfalse
166 \newif\if@city\@cityfalse
167 \newif\if@sourcenr\@sourcenrfalse
168 \newif\if@source\@sourcefalse
169 \newif\if@date\@datefalse
170 \newif\if@day\@dayfalse
171 \newif\if@year\@yearfalse
172 \newif\if@issue\@issuefalse
173 \newif\if@pages\@pagesfalse
174 \newif\if@tournament\@tournamentfalse
175 \newif\if@award\@awardfalse
176 \newif\if@after\@afterfalse
177 \newif\if@version\@versionfalse
178 \newif\if@correction\@correctionfalse
179 \newif\if@dedication\@dedicationfalse
180 \newif\if@fidealbum\@fidealbumfalse
181 \newif\if@twins\@twinsfalse
182 \newif\if@theme\@themefalse
183 \newif\if@computer\@computerfalse
184 \newif\if@judgement\@judgementfalse
185 \newif\if@comment\@commentfalse

```

```

186 \newif\if@pieces\@piecesfalse
187 \newif\if@fieldtext\@fieldtextfalse
188 \newif\if@nofields\@nofieldsfalse
189 \newif\if@gridlines\@gridlinesfalse
190 \newif\if@fieldframe\@fieldframefalse
191 \newif\if@stdgrid\@stdgridfalse
192 \newboolean{showcomputer}\setboolean{showcomputer}{true}%
193 \newcommand*{\computerproofedsymbol}{C+}
194 \newcommand*{\notcomputerproofedsymbol}{C-}
195 % \newif\if@show@computer\@show@computertrue
196 \newif\if@stipulation\@stipulationfalse
197 \newif\if@condition\@conditionfalse
198 \newif\if@remark\@remarkfalse
199 \newif\if@piecedefs\@piecedefsfalse
200 \newif\if@typis\@typisfalse
201 \newif\if@widedias\@widediasfalse
202 \newif\ifx@twins\x@twinsfalse
203 \newif\ifx@cond\x@condfalse
204 \newif\ifimitator\imitatorfalse
205 \newif\ifnormal@names\normal@namesfalse
206 \newif\ifs@lu
207 \newif\if@develop\@developfalse
208 \newif\if@notfirst
209 \newif\if@first

210 \newwrite\s@lfd
211 \let\below@newline=\relax
212 % These are used by the "old" board creating mechanism
213 \newcount\@lines
214 \newcount\@rows
215 \newcount\lines@max
216 \newcount\rows@max
217 \newcount\planes@max

```

The following counters are used when creating the diagram itself.

```

218 \newcounter{cpd@rowsmax}
219 \newcounter{cpd@linesmax}
220 \newcounter{cpd@current@row}
221 \newcounter{cpd@current@line}
222 \newcounter{cpd@maxsquare}
223 \newcounter{cpd@helper}
224 \newcounter{cpd@current@square@index}
225 \newcounter{cpd@current@square@value}

```

Some boolean TEX-switches used within stereo- or spacechess diagrams.

```

226 \newif\if@stereo\@stereofalse
227 \newif\if@space\@spacefalse

```

These boolean switches are used to control the output of registers.

```

228 \newif\if@aindex\@aindexfalse
229 \newif\if@sindex\@sindexfalse
230 \newif\if@tindex\@tindexfalse
231 \newif\ifds@label

```

\diagram Defines the code executed in **\begin{diagram}**. In case no optional size is given,
\@diagram a normal 8×8 board is generated.

```

232 \def\diagram{%
233     \begingroup%
234     \@ifnextchar [{\@diagram}{\@diagram[\@ight x\@ight]]}%
235 }
236
237 \def\@diagram[#1x#2]{%
238     \lines@max=#1%
239     \rows@max=#2%
240     \setcounter{cpd@linesmax}{#1}%
241     \setcounter{cpd@rowsmax}{#2}%
242     \setcounter{cpd@maxsquare}{\value{cpd@rowsmax}*\value{cpd@linesmax}}%
243     \pl@ne=z@%
244     \current@plane=z@%
245     \let\put@sqs=\put@sqs@normal%
246     \let\read@plane=\read@plane@normal%
247     \@start@diagram%
248 }
249
250 \def\stereodiagram{%
251     \begingroup%
252     \@stereottrue%
253     \let\put@sqs=\put@sqs@stereo%
254     \let\read@plane=\read@plane@stereo%
255 }
256
257 \def\spacediagram{%
258     \begingroup%
259     \@spacetrue%
260     \@ifnextchar [{\@spacediagram}{\@spacediagram[5x5x5]]}%
261 }
262
263 \def\@spacediagram[#1x#2x#3]{%
264     \lines@max=#1%
265     \rows@max=#2%
266     \planes@max=#3%
267     \let\put@sqs=\put@sqs@space%
268     \let\read@plane=\read@plane@space%
269 }
270
271 \def\@start@diagram{%
272     \init@vars%
273     \let\author=\ds@author%
274     \let\day=\ds@day%
275     \let\month=\ds@month%
276     \let\year=\ds@year%
277     \let\label=\ds@label%
278     \ignorespaces%
279 }
280
281 \def\showtypis#1{%
282     \@typistrue%
283     \typis@tk={#1}%
284     \ignorespaces%
285 }

```

```

285
286 \def\enddiagram{%
287     \let\author=\orig@author%
288     \let\day=\orig@day%
289     \let\month=\orig@month%
290     \let\year=\orig@year%
291     \let\label=\orig@label%
292     \if@number%
293     \else%
294         \refstepcounter{board@nr}% so \label and \ref work properly
295     \fi%
296     %
297     % Now \label@tk should be set, if wanted, so
298     % we can generate the index entries
299     %
300     \@aindex%
301     \@sindex%
302     \@tindex%
303     %
304     % Now \@currentlabel will be set right, so we can use
305     % the original label
306     \if@label%
307         \expandafter\@set@label\the\label@tk;%
308     \fi%
309     %
310     % Now we know, if we have frames so we can setup our dimensions
311     %
312     \global\squarewidth=\fontdimen\tw@\chessfont%
313     \if@stereo%
314         \bdwidth=\@ight\squarewidth%
315         \boardwidth=\@ight\squarewidth%
316         \ifdim\h@frame@dist<\squarewidth%
317             \h@frame@dist=\squarewidth%
318         \fi%
319         % We do already skip with \v@space@dist
320         % So we use the additional skip \space@frame@dist here
321         \v@frame@dist=\space@frame@dist%
322         \ifdim\space@frame>\outer@frame%
323             \outer@frame=\space@frame%
324         \fi%
325         \advance\bdwidth\tw@\inner@frame%
326         \advance\boardwidth\tw@\inner@frame%
327         \advance\boardwidth\tw@\h@frame@dist%
328         \advance\boardwidth\tw@\outer@frame%
329     \else\if@space%
330         \ifdim\h@frame@dist<1.5\squarewidth%
331             \h@frame@dist=1.5\squarewidth%
332         \fi%
333         % We do already skip with \v@space@dist
334         % So we use the additional skip \space@frame@dist here
335         \v@frame@dist=\space@frame@dist%
336         \ifdim\space@frame>\outer@frame%
337             \outer@frame=\space@frame%
338         \fi%

```

```

339 \ifspace@vertical%
340 \bd@width=\lines@max\sq@width%
341 \board@width\bd@width%
342 \advance\bd@width\tw@\inner@frame%
343 \advance\board@width\tw@\inner@frame%
344 \advance\board@width\tw@\h@frame@dist%
345 \advance\board@width\tw@\outer@frame%
346 \else%
347 \bd@width=\lines@max\sq@width%
348 \advance\bd@width\tw@\inner@frame%
349 \ifdim\h@space@dist<1.5\sq@width%
350 \h@space@dist=1.5\sq@width%
351 \fi%
352 %\h@space@dist=0.7\sq@width%
353 % Now we can compute the width of the complete board
354 \board@width\bd@width%
355 \advance\board@width\h@space@dist%
356 \multiply\board@width\planes@max%
357 \advance\board@width\h@space@dist%
358 \advance\board@width\tw@\outer@frame%
359 \fi%
360 \else%
361 \ifthenelse{\boolean{legend}}{\v@frame@dist=1.5em\h@frame@dist=1.5em}{}%
362 \bd@width=\lines@max\sq@width%
363 \ifnum\lines@max>\@eight%
364 % Make the board wider
365 \board@width=\lines@max\sq@width%
366 \else%
367 % Make a normal width
368 \board@width=\@eight\sq@width%
369 \fi%
370 \advance\bd@width\tw@\inner@frame%
371 \advance\board@width\tw@\inner@frame%
372 \advance\board@width\tw@\h@frame@dist%
373 \advance\board@width\tw@\outer@frame%
374 \fi\fi%
375 \if@widedias%
376 \head@width=\textwidth%
377 \else%
378 \head@width=\board@width%
379 \fi%
380 %
381 % Now we should build the diagram itself
382 %
383 \ifthenelse{\boolean{@textproblem}}{%
384 % Put the stipulation into the \sq@box
385 \setbox\sq@box=\hbox{\vbox to \board@width{\hsize\board@width%
386 \stipfont%
387 \raggedright%
388 \sloppy%
389 \the\stipulation@tk%
390 \vfil%
391 }}%
392 }{%

```

```

393 \put@sqsq% This builds up the \sq@box
394 % Check, if the given number of pieces is reached
395 \ifthenelse{\boolean{cpd@checkPieceCounts}}{%
396 \ifthenelse{\value{cpd@defWhitePieces}=\value{cpd@whitePieces}}{%
397 {\errmessage{Wrong number of white pieces}}%
398 \ifthenelse{\value{cpd@defBlackPieces}=\value{cpd@blackPieces}}{%
399 {\errmessage{Wrong number of black pieces}}%
400 \ifthenelse{\value{cpd@defNeutralPieces}=\value{cpd@neutralPieces}}{%
401 {\errmessage{Wrong number of neutral pieces}}%
402 }{}%
403 }%
404 %
405 \global\setbox\dia@box=\hbox{\vbox{%
406 \parindent\z@%
407 \parskip\z@%
408 \baselineskip11\p@advance\baselineskip\dia@lineskip%
409 \hsize\head@width%
410 \centering%
411 % diagram header
412 \vskip\topdist%
413 \vbox{\hsize\board@width\hbox{%
414 \if@develop\if@label%
415 \noindent\raggedright\llap{\labelfont\the\label@tk\ }%
416 \fi\fi%
417 \vbox{%
418 \headpos\dia@above%
419 }%
420 }}%
421 \vskip\tw@p@%
422 % diagram itself
423 \vtop{\hsize\board@width%
424 \hbox to \head@width{\hss\vbox{%
425 \hsize\board@width%
426 \ifthenelse{\boolean{@textproblem}}{%
427 \box\sq@box%
428 }{}%
429 \outer@henbox{\box\sq@box}%
430 }%
431 }\hss}%
432 % diagram trailer
433 \hbox to \head@width{\hss\vtop{%
434 \hsize\board@width%
435 \parskip\z@%
436 \raggedright%
437 \put@count%
438 \dia@below%
439 }\hss}%
440 }%
441 }}% End of \dia@box
442 \do@dia@job%
443 \endgroup%
444 }
445
446 \def\do@put@count{%

```

```

447 \ \ (\arabic{cpd@whitePieces}+\arabic{cpd@blackPieces}%
448 \ifthenelse{\value{cpd@neutralPieces}>0}{+\arabic{cpd@neutralPieces}}{}}%)
449 }
450
451 \def\put@count{%
452 % First we build the box with the figure count
453 \ifthenelse{\boolean{showcomputer}\OR\boolean{piececounter}}{%
454 \global\setbox\@cnt@box=\hbox{%
455 \stipfont%
456 \ifthenelse{\boolean{showcomputer}}{%
457 \ \ \if@computer\computerproofedsymbol\else\notcomputerproofedsymbol\fi%
458 }{}%
459 \ifthenelse{\boolean{piececounter}}{%
460 \do@put@count%
461 }{}%
462 }%
463 \@cnt@wd=\wd\@cnt@box%
464 \hangindent-\@cnt@wd%
465 \hangafter\m@ne%
466 \noindent%
467 \hbox to \z@{%
468 \hbox to \board@width{\hfil\unhbox\@cnt@box}\hskip -\board@width%
469 }%
470 }{}%
471 }
472
473 \let\endstereodiagram=\enddiagram
474 \let\endspacediagram=\enddiagram
475 \def\figurine{%
476 \begingroup%
477 \init@vars%
478 \let\author=\ds@author%
479 \let\day=\ds@day%
480 \let\month=\ds@month%
481 \let\year=\ds@year%
482 \let\label=\ds@label%
483 }
484
485 \def\endfigurine{%
486 \let\author=\orig@author%
487 \let\day=\orig@day%
488 \let\month=\orig@month%
489 \let\year=\orig@year%
490 \let\label=\orig@label%
491 \if@number%
492 \else%
493 \refstepcounter{board@nr}% so \label and \ref work properly
494 \fi%
495 %
496 % Now \label@tk should be set, if wanted, so
497 % we can generate the index entries
498 %
499 \@aindex%
500 \@sindex%

```

```

501 \@tindex%
502 %
503 % Now \@currentlabel will be set right, so we can use
504 % the original label
505 %
506 \if@label%
507 \expandafter\@set@label\the\label@tk;%
508 \fi%
509 %
510 \@show@figurine%
511 \endgroup%
512 }
513 %
514 \gdef\selectelchfont#1{%
515 \global\elchfont\csname @#1elch\endcsname\defaultelchfont%
516 }

```

Here we define commands to change fonts used for text above and below the diagram. You may redefine to adjust the fonts to your needs.

```

\authorfont
\cityfont 517 \newcommand*{\authorfont}{\bfseries}
\sourcefont 518 \newcommand*{\cityfont}{\slshape}
\awardfont 519 \newcommand*{\sourcefont}{\bfseries\itshape}
\dedicfont 520 \newcommand*{\awardfont}{\itshape}
\stipfont 521 \newcommand*{\dedicfont}{\itshape}
\remfont 522 \newcommand*{\stipfont}{\rmfamily}
\labelfont 523 \newcommand*{\remfont}{\rmfamily}
\cpd@boardfont 524 \newcommand*{\labelfont}{\rmfamily}
\legendfont 525 \newcommand*{\cpd@boardfont}{\rmfamily}
526 \newcommand*{\legendfont}{\sfamily}

```

We have three different default sizes for diagrams. The following commands switch fontsizes used for the chessfonts to typeset the diagrams.

```

\diagramx
\diagramxi 527 \newcommand*{\diagramx}{
\diagramxii 528 \ifcase\elchfont\relax%
529 \font\chessfont=pkelch12
530 \font\chtextfont=pkelch10
531 \else%
532 \font\chessfont=fselch12
533 \font\chtextfont=fselch10
534 \fi%
535 \dia@lineskip\z@
536 \dia@type\z@
537 }
538
539 \newcommand*{\diagramxi}{
540 \ifcase\elchfont\relax%
541 \font\chessfont=pkelch14
542 \font\chtextfont=pkelch11
543 \else%
544 \font\chessfont=fselch14
545 \font\chtextfont=fselch11

```

```

546 \fi%
547 \dia@lineskip\@ne\p@
548 \dia@type\@ne
549 }
550
551 \newcommand*\diagramxii{%
552 \ifcase\elchfont\relax%
553 \font\chessfont=pk\elch16
554 \font\chtextfont=pk\elch12
555 \else%
556 \font\chessfont=fs\elch16
557 \font\chtextfont=fs\elch12
558 \fi%
559 \dia@lineskip\tw@\p@
560 \dia@type\tw@
561 }

```

`\defaultelchfont` `\defaultelchfont` is used to define the fontsize used to typeset the diagrams depending on the documentsize.

```

562 \def\defaultelchfont{%
563 \ifcase\@ptsize\relax%
564 \diagramx\or%
565 \diagramxi\or%
566 \diagramxii%
567 \fi%
568 }

569 \def\dianamestyle#1{\def\@dianame{\csname @#1\endcsname}}
570 \def\solnamestyle#1{\def\@solname{\csname @#1\endcsname}}
571 \newcommand*\diagnum}[2][\%
572 \renewcommand*\@dianumber@prefix]{#1}%
573 \setcounter{board@nr}{#2}%
574 \addtocounter{board@nr}{\m@ne}}

```

`\ra` Now we define a couple of abbreviations and special symbols often used when
`\lra` setting problem chess documents.

```

\rla 575 \def\ra{\mbox{$\rightarrow$}}
\lra 576 \def\lra{\mbox{$\leftarrow$}}
\set 577 \let\rla=\lra
\OO 578 \def\x{\mbox{\ifmmode\times\else$\times$\fi}}
\OOO 579 \def\set{\kern -.05em\raise .1ex\hbox{*}}
\any 580 \def\@0{\raise.25ex\hbox{-}\kern -.1em\relax}
\urther 581 \def\OO{\@0}
582 \def\OOO{\@0\@0}
583 \def\any{\ifmmode\sim\else$\sim$\fi}
584 \def\urther{\ifmmode\rightarrow\else$\rightarrow$\fi\ignorespaces}

585 \def\spacelayout#1{\csname space@#1\endcsname}
586 \def\nodiagnumbering{\global\di@nofalse}
587 \newcommand*\@dianumber@prefix{}
588 \def\diagnumbering#1{%
589 \di@notrue\diagnum{\@ne}%
590 \gdef\thediag{\@dianumber@prefix\csname @#1\endcsname\c@board@nr}%
591 }

```

```

\diagcenter The macros \diagcenter, \diagleft and \diagright simply define the macro
\diagleft \he@dpos to the corresponding paragraph alignment.
\diagright 592 \def\diagcenter{\def\he@dpos{\centering}}
593 \def\diagleft{\def\he@dpos{\raggedright}}
594 \def\diagright{\def\he@dpos{\raggedleft}}

\setmonthstyle The implementation of \setmonthstyle does \diagnumbering define a com-
mand which uses the given parameter as a part of the command name.
595 \def\setmonthstyle#1{\def\write@month{\csname @#1\endcsname}}

596 \def\specialdiagnum#1{%
597 \@specialtrue%
598 \number@tk={#1}\@numbertrue\def\thediag{#1}\def\@currentlabel{#1}%
599 \ignorespaces%
600 }

\ds@label The macros \ds@label and \ds@author are defined internally and are made
\ds@author public within \begin{diagram}. This is because the macros \label and
\author are normal LATEX-macros and I want to avoid to redefine these globally.
601 \def\ds@label{%
602 \ifstar{\ds@labelfalse\ds@xlabel}{\ds@labeltrue\ds@xlabel}%
603 }
604 \def\ds@author#1{%
605 \aut@tk={#1}\auth@rtrue%
606 \ignorespaces%
607 }

\ds@academictitle
\Dr 608 \def\ds@academictitle#1{\ifthenelse{\boolean{showacademictitle}}{#1~}{\ignorespaces}
\Prof 609 \newcommand{\Dr}{\ds@academictitle{Dr.}}
\ProfDr 610 \newcommand{\Prof}{\ds@academictitle{Prof.}}
611 \newcommand{\ProfDr}{\ds@academictitle{Prof.\,Dr.}}

612 \def\city#1{%
613 \city@tk={#1}\@citytrue%
614 \ignorespaces%
615 }
616 \def\sourcenr#1{%
617 \sourcenr@tk={#1}\@sourcenrtrue%
618 \ignorespaces%
619 }
620 \def\source#1{%
621 \source@tk={#1}\@sourcetrue%
622 \ignorespaces%
623 }
624 \def\ds@day#1{%
625 \day@tk={#1}\@daytrue\@datetrue%
626 \ignorespaces%
627 }
628 \def\ds@month#1{%
629 \from@month=#1\@datetrue%
630 \ignorespaces%
631 }
632 \def\months#1{%

```

```

633 \months#1;%
634 \ignorespaces%
635 }
636 \def\ds@year#1{%
637 \year@tk={#1}\@yeartrue\@datetrue%
638 \ignorespaces%
639 }
640 \def\issue#1{%
641 \issue@tk={#1}\@issuetrue%
642 \ignorespaces%
643 }
644 \def\pages#1{%
645 \pages@tk={#1}\@pagetrue%
646 \ignorespaces%
647 }
648 \def\tournament#1{%
649 \tournament@tk={#1}\@tournamenttrue%
650 \ignorespaces%
651 }
652 \def\award#1{%
653 \award@tk={#1}\@awardtrue%
654 \ignorespaces%
655 }
656 \def\version#1{%
657 \version@tk={#1}\@versiontrue%
658 \ignorespaces%
659 }
660 \def\after#1{%
661 \after@tk={#1}\@aftertrue%
662 \ignorespaces%
663 }
664 \def\correction#1{%
665 \correction@tk={#1}\@correctiontrue%
666 \ignorespaces%
667 }
668 \def\dedication#1{%
669 \dedic@tk={#1}\@dedicationtrue%
670 \ignorespaces%
671 }
672 \def\fidealbum#1{%
673 \fidealbum@tk={#1}\@fidealbumtrue%
674 \ignorespaces%
675 }
676 \def\pieces{%
677 \@ifnextchar[%
678 {\x@pieces}%
679 {\@pieces}%
680 }
681 \def\x@pieces[#1]{%
682 % We should parse the given piececounts
683 \setboolean{cpd@checkPieceCounts}{true}%
684 \@parseWhiteAndBlackCount#1+\e@list
685 \@pieces%
686 }

```

```

687 \def\@parseWhiteAndBlackCount#1+#2+{%
688   \setcounter{cpd@defWhitePieces}{#1}%
689   \setcounter{cpd@defBlackPieces}{#2}%
690   \futurelet\n@xt\cpd@checkNeutral%
691 }
692 \let\cpd@nextproc=\relax%
693 \def\cpd@checkNeutral{%
694   \if\n@xt\relax%
695     \let\cpd@nextproc=\relax%
696   \else%
697     \let\cpd@nextproc=\@parseNeutralCount%
698   \fi%
699   \cpd@nextproc%
700 }
701 \def\@parseNeutralCount#1+{%
702   \setcounter{cpd@defNeutralPieces}{#1}%
703 }
704 \def\@pieces#1{%
705   \pieces@tk={#1}\@piecestrue%
706   \ignorespaces%
707 }
708 \def\fieldtext#1{%
709   \fieldtext@tk={#1}\@fieldtexttrue%
710   \ignorespaces%
711 }
712 \def\nofields#1{%
713   \nofields@tk={#1}\@nofieldstrue%
714   \ignorespaces%
715 }
716 \let\nosquares\nofields
717 \def\gridlines#1{%
718   \gridlines@tk={#1}\@gridlinestrue%
719   \ignorespaces%
720 }
721 \def\fieldframe#1{%
722   \fieldframe@tk={#1}\@fieldframetrue%
723   \ignorespaces%
724 }
725 \def\stipulation#1{%
726   \stipulation@tk={#1}\@stipulationtrue%
727   \ignorespaces%
728 }
729 \def\condition{%
730   \@ifstar{\x@condtrue\@condition}{\@condition}%
731 }
732 \def\@condition#1{%
733   \condition@tk={#1}\@conditiontrue%
734   \ignorespaces%
735 }
736 \def\twins{%
737   \@ifstar{\x@twinstrue\@twins}{\@twins}%
738 }
739 \def\@twins#1{%
740   \twins@tk={#1}\@twinstrue%

```

```

741 \ignorespaces%
742 }
743 \def\remark#1{%
744 \remark@tk={#1}\@remarktrue%
745 \ignorespaces%
746 }
747 \def\piecedefs#1{%
748 \piecedefs@tk={#1}\@piecedefstrue%
749 \ignorespaces%
750 }
751 % \def\@piecedef#1{\csname#1\@x@piecedef\endcsname\l@klist}
752 % \newcommand{\piecedef}[3][ws]{%
753 % \def\@x@piecedef{#2}%
754 % \let\@action=\@piecedef%
755 % \hbox{\l@klist#1\@e@list%
756 % \ = #3}%
757 % }
758 \def\Co#1{%
759 \ifx#1+\@computertrue\computer@tk={+}\fi%
760 \ignorespaces%
761 }
762 \long\def\solution#1{%
763 \sol@tk={#1}\global\s@luttrue%
764 \ignorespaces%
765 }
766 \def\themes#1{%
767 \theme@tk={#1}\@themetrue%
768 \ignorespaces%
769 }
770 \long\def\comment#1{%
771 \comment@tk={#1}\@commenttrue%
772 \ignorespaces%
773 }
774 \long\def\judgement#1{%
775 \judgement@tk={#1}\@judgementtrue%
776 \ignorespaces%
777 }
778 \def\noframe{%
779 \@vframefalse\@hframefalse%
780 \ignorespaces%
781 }
782 \def\noinnerframe{%
783 \@leaveOuterfalse\@vframefalse\@hframefalse%
784 \ignorespaces%
785 }
786 \def\verticalcylinder{%
787 \@vframefalse%
788 \ignorespaces%
789 }
790 \def\horizontalcylinder{%
791 \@hframefalse%
792 \ignorespaces%
793 }
794 \def\stdgrid{%

```

```

795 \@stdgridtrue%
796 \ignorespaces%
797 }

```

`\gridchess` Here we define some abbreviations and synonyms for other macros.

```

\magic 798 \let\gridchess=\stdgrid
\tourn 799 \let\magic=\fieldframe
\dedic 800 \let\tourn=\tournament
\stip 801 \let\dedic=\dedication
\cond 802 \let\stip=\stipulation
\rem 803 \let\cond=\condition
\sol 804 \let\rem=\remark
805 \let\sol=\solution

806 \def\develop{%
807 \@developtrue%
808 \ignorespaces%
809 }
810 \def\showcomputer{%
811 \setboolean{showcomputer}{true}%
812 \ignorespaces%
813 }
814 \def\nocomputer{%
815 \setboolean{showcomputer}{false}%
816 \ignorespaces%
817 }
818 \def\putsol{\immediate\closeout\s@lfd\input\jobname.sol\cl@arsol}
819 \def\widedias{\@widediastrue\diagcenter}
820 \def\nowidedias{\@widediasfalse}
821 \def\normalnames{\normal@namestrue}
822 \def\reversednames{\normal@namesfalse}
823 \def\makeaindex{%
824 \@dia@index%
825 \newindex[thediag]{author}{adx}{and}{Autorenverzeichnis}%
826 \@aindextrue\reversednames%
827 }
828
829 \def\makesindex{%
830 \@dia@index%
831 \newindex[thediag]{source}{sdx}{snd}{Quellenregister}%
832 \@sindextrue%
833 }
834
835 \def\maketindex{%
836 \@dia@index%
837 \newindex[thediag]{theme}{tdx}{tnd}{Themenregister}%
838 \@tindextrue%
839 }
840
841 \def\authorindex{\let\@idxitem\@aidxitem\printindex[author]}
842 \def\sourceindex{\printindex[source]}
843 \def\themeindex{\printindex[theme]}
844 \def\DefinePieces#1#2#3{%
845 \setPieceColor#1\setPieceSpec#2\setPieceRotation#3%

```

```

846 \loop@rotation%
847 \expandafter\xdef\csname\ds@black\ds@white\ds@bishop\endcsname{%
848 \noexpand\ch@fig{20}%
849 }%
850 \expandafter\xdef\csname\ds@black\ds@black\ds@bishop\endcsname{%
851 \noexpand\ch@fig{32}%
852 }%
853 \expandafter\xdef\csname\ds@white F\endcsname{\chessfont\ }%
854 \expandafter\xdef\csname\ds@black F\endcsname{\chessfont\char144}%
855 \expandafter\xdef\csname\ds@white Nr\endcsname{%
856 \noexpand\ch@fig{109}%
857 }%
858 \expandafter\xdef\csname\ds@neutral Nr\endcsname{%
859 \noexpand\ch@fig{115}%
860 }%
861 \expandafter\xdef\csname\ds@black Nr\endcsname{%
862 \noexpand\ch@fig{121}%
863 }%
864 \expandafter\xdef\csname\ds@white Gh\endcsname{%
865 \noexpand\ch@fig{112}%
866 }%
867 \expandafter\xdef\csname\ds@neutral Gh\endcsname{%
868 \noexpand\ch@fig{118}%
869 }%
870 \expandafter\xdef\csname\ds@black Gh\endcsname{%
871 \noexpand\ch@fig{124}%
872 }%
873 \expandafter\xdef\csname\ds@white C\endcsname{%
874 \noexpand\ch@fig{145}%
875 }%
876 \expandafter\xdef\csname\ds@neutral C\endcsname{%
877 \noexpand\ch@fig{151}%
878 }%
879 \expandafter\xdef\csname\ds@black C\endcsname{%
880 \noexpand\ch@fig{157}%
881 }%
882 }
883 \def\Imi{\ch@fig{157}}
884 \def\wE{\ch@fig{216}}
885 \def\NE{\ch@fig{222}}
886 \def\SE{\ch@fig{228}}
887 \def\wX{\ch@fig{180}}
888 \def\NX{\ch@fig{186}}
889 \def\sX{\ch@fig{192}}
890

```

\dia@above The content of the box above a diagram is controlled by the macro **\dia@above**. It just delegates the information to a couple of other macros, which then generate the displayed information above the diagram.

```

891 \newboolean{above@newline}
892 \newcommand{\above@newline}{\ifthenelse{\boolean{above@newline}}{\linebreak}{\setboolean{above@new
893 \def\dia@above{%
894 \setboolean{above@newline}{false}%
895 \@dia@number%

```

```

896 \dia@authors%
897 \dia@city%
898 \dia@after%
899 \dia@version%
900 \dia@source%
901 \dia@correction%
902 \dia@tournament%
903 \dia@award%
904 \dia@dedic%
905 \dia@fidealbum%
906 }

```

`\dia@below` As before, the macro `\dia@below` creates the displayed information below the chessboard - forwarding to a couple of other macros.

```

907 \def\dia@below{%
908   \bgroup%
909   \if@stipulation%
910     \dia@stipulation%
911   \fi%
912   \ifx@cond\else%
913     \dia@condition%
914   \fi%
915   \ifx@twins\else%
916     \dia@twins%
917   \fi%
918   \dia@piecedefs%
919   \dia@remark%
920   \ifthenelse{\boolean{@solafterdiagram}}{%
921     \below@newline%
922     \the\sol@tk%
923   }{}%
924   \noindent\hbox{}\newline\hbox{}%
925   \egroup%
926 }

```

`\dia@number` The `\dia@number` macro simply creates the diagram number in a single paragraph.

```

927 \def\dia@number{%
928   \ifdi@no\above@newline{\authorfont\thediag}\fi%
929 }

```

`\dia@authors` This macro is used to create the list of authors specified within the `\author` macro inside the `diagram` environment. Depending on the `TeX`-boolean `normal@names` we either simply display the registered author or parse the list of authors by using the generic `\@parseTokenList` macro.

```

930 \def\dia@authors{%
931   \ifauth@r%
932     \ifnormal@names%
933       \above@newline
934       {\authorfont\the\aut@tk}%
935     \else%
936       \let\@action=\dia@writename% Parse the list of authors
937       \@parseTokenlist\aut@tk;

```

```

938     \fi%
939 \fi%
940 }

941 \def\@show@city#1;{\if@notfirst\ \slash\ \else\@notfirsttrue\fi#1}
942
943 \def\p@rsecity#1; {\@show@city#1;\l@@klist}
944
945 \def\@dia@city{%
946     \ifthenelse{\boolean{showcity}}{%
947         \if@city%
948             \above@newline%
949             \bgroup%
950             \cityfont\@notfirstfalse%
951             \let\@action=\p@rsecity\@parseTokenlist\city@tk;%
952             \egroup%
953         \fi%
954     }{}%
955 }
956
957 \def\@dia@after{%
958     \if@after%
959         \bgroup%
960         \above@newline%
961         \dedicfont\the\after@tk%
962         \egroup%
963     \fi%
964 }
965
966 \def\@dia@version{%
967     \if@version%
968         \above@newline%
969         \bgroup%
970         \dedicfont\the\version@tk%
971         \egroup%
972     \fi%
973 }
974
975 \def\@dia@date{%
976     \ifnum\from@month>\z@%
977         \if@day%
978             \the\day@tk.\write@month\from@month%
979         \else%
980             \write@month\from@month%
981         \fi%
982     \ifnum\to@month>\z@--\write@month\to@month\fi%
983     \if@day.\else/\fi%
984 \fi%
985 \if@year\the\year@tk\fi%
986 }
987
988 \def\@dia@source{%
989     \if@source%
990         \above@newline%

```

```

991      \bgroup%
992      \sourcefont%
993      \if@sourcenr\the\sourcenr@tk\ \fi
994      \the\source@tk%
995      \if@date\ \ \fi\@dia@date%
996      \if@issue\ \ \the\issue@tk\fi%
997      \if@pages ,\ \the\pages@tk\fi%
998      \egroup%
999  \else%
1000    \if@tournament\else\if@date%
1001      \above@newline%
1002      \bgroup%
1003      \sourcefont%
1004      \@dia@date%
1005      \egroup%
1006      \fi\fi%
1007    \fi%
1008  }
1009
1010  \def\@dia@correction{%
1011    \if@correction%
1012      \above@newline%
1013      \bgroup%
1014      \dedicfont\the\correction@tk%
1015      \egroup%
1016    \fi%
1017  }
1018
1019  \def\@dia@tournament{%
1020    \if@tournament
1021      \above@newline%
1022      \bgroup%
1023      \awardfont%
1024      \the\tournament@tk
1025      \if@source\else\if@date%
1026        \ \ \@dia@date%
1027      \fi\fi%
1028      \egroup%
1029    \fi%
1030  }
1031
1032  \def\@dia@award{%
1033    \if@award%
1034      \above@newline%
1035      \bgroup%
1036      \awardfont\the\award@tk%
1037      \egroup%
1038    \fi%
1039  }
1040
1041  \def\@dia@dedic{%
1042    \if@dedication%
1043      \above@newline%
1044      \bgroup%

```

```

1045     \dedicfont\the\dedic@tk%
1046     \egroup%
1047 \fi%
1048 }
1049
1050 \def\@show@album#1/#2;{#1 FIDE-Album #2}
1051
1052 \def\@dia@fidealalbum{%
1053     \if@fidealalbum%
1054         \above@newline%
1055         {\expandafter\@show@album\the\fidealalbum@tk;}%
1056     \fi%
1057 }
1058
1059 \def\@twinskip{\ \ }
1060
1061 \def\@dia@stipulation{%
1062     \if@stipulation%
1063         \bgroup%
1064         \stipfont%
1065         \the\stipulation@tk%
1066         \ifx@twins%
1067             \let\below@newline\@twinskip%
1068             \@dia@twins%
1069         \else\ifx@cond%
1070             \let\below@newline\@twinskip%
1071             \@dia@condition%
1072         \fi\fi%
1073         \egroup%
1074         \let\below@newline\newline%
1075     \else%
1076         \x@twinsfalse%
1077         \x@condfalse%
1078         \let\below@newline\relax%
1079     \fi%
1080 }
1081
1082 \def\x@write@twin#1; {%
1083     \hskip1em#1%
1084     \@lefttrue\let\below@newline\newline%
1085     \let\@action\write@twins%
1086     \l@klist%
1087 }
1088
1089 \def\write@twins#1; {%
1090     \setbox\@test@box=\hbox{#1\if@left~~\fi}%
1091     \ifdim\wd\@test@box>4\sq@width%
1092         \below@newline%
1093         \@lefttrue%
1094         #1%
1095     \else%
1096         \if@left%
1097             \below@newline%
1098         \fi%

```

```

1099      \noindent\hbox to 4\sq@width{#1\hfil}%
1100      \if@left%
1101          \@leftfalse%
1102      \else%
1103          \@lefttrue%
1104      \fi%
1105  \fi%
1106  \let\below@newline\newline%
1107  \l@@klist%
1108 }
1109
1110 \def\@dia@twins{%
1111     \if@twins%
1112         \bgroup%
1113         \@lefttrue%
1114         \remfont%
1115         \ifx@twins%
1116             \let\@action=\x@write@twin%
1117         \else%
1118             \let\@action=\write@twins%
1119         \fi%
1120         \@parseTokenlist\twins@tk;%
1121         \egroup%
1122         \let\below@newline\newline%
1123     \fi%
1124 }
1125
1126 \def\@dia@condition{%
1127     \if@condition%
1128         \bgroup%
1129         \@lefttrue%
1130         \remfont%
1131         \ifx@cond%
1132             \let\@action=\x@write@twin%
1133         \else%
1134             \let\@action=\write@twins%
1135         \fi%
1136         \@parseTokenlist\condition@tk;%
1137         \egroup%
1138         \let\below@newline\newline%
1139     \fi%
1140 }
1141
1142 \def\check@piecedef{%
1143     \ifx\next@piecedef\relax%
1144         \let\col@action=\relax%
1145     \else%
1146         \let\col@action=\@@piecedef%
1147     \fi%
1148     \col@action%
1149 }
1150 \def\@@piecedef#1{\csname#1\x@piecedef\endcsname\parse@piecedef}
1151
1152 \def\parse@piecedef{\futurelet\next@piecedef\check@piecedef}

```

```

1153
1154 \def\@piecedef#1#2#3{%
1155     \def\x@piecedef{#2}%
1156     \below@newline%
1157     \hbox{%
1158         \parse@piecedef#1\relax%
1159         \ = #3}%
1160 }
1161
1162 \def\write@piecedefs#1; {%
1163     \@piecedef#1%
1164     \l@@klist%
1165 }
1166
1167 \def\@dia@piecedefs{%
1168     \if@piecedefs%
1169         \bgroup%
1170         \@lefttrue%
1171         \let\below@newline\newline%
1172         \remfont\let\@action=\write@piecedefs%
1173         \@parseTokenlist\piecedefs@tk;%
1174         \egroup%
1175     \fi%
1176 }
1177
1178 \def\@dia@remark{%
1179     \if@remark%
1180         \bgroup%
1181         \@lefttrue%
1182         \remfont\let\@action=\write@twins%
1183         \@parseTokenlist\remark@tk;%
1184         \egroup%
1185         \let\below@newline\newline%
1186     \fi%
1187 }
1188
1189 \def\parse@params#1{%
1190     \ifcase\help@a\relax
1191         \label@tk={#1}\ifx\relax#1\else\@labeltrue\fi\or%
1192         \number@tk={#1}\ifx\relax#1\else\@numbertrue\fi\or%
1193         \aut@tk={#1}\ifx\relax#1\else\@auth@rtrue\fi\or%
1194         \city@tk={#1}\ifx\relax#1\else\@citytrue\fi\or%
1195         \sourcenr@tk={#1}\ifx\relax#1\else\@sourcenrtrue\fi\or%
1196         \source@tk={#1}\ifx\relax#1\else\@sourcetrue\fi\or%
1197         \day@tk={#1}\ifx\relax#1\else\@daytrue\fi\or%
1198         \from@month=#1\or%
1199         \to@month=#1\or%
1200         \year@tk={#1}\ifx\relax#1\else\@yeartrue\fi\or%
1201         \issue@tk={#1}\ifx\relax#1\else\@issuetrue\fi\or%
1202         \pages@tk={#1}\ifx\relax#1\else\@pagetrue\fi\or%
1203         \tournament@tk={#1}\ifx\relax#1\else\@tournamenttrue\fi\or%
1204         \award@tk={#1}\ifx\relax#1\else\@awardtrue\fi\or%
1205         \after@tk={#1}\ifx\relax#1\else\@aftertrue\fi\or%
1206         \version@tk={#1}\ifx\relax#1\else\@versiontrue\fi\or%

```

```

1207 \correction@tk={#1}\ifx\relax#1\else\@correctiontrue\fi\or%
1208 \dedic@tk={#1}\ifx\relax#1\else\@dedicationtrue\fi\or%
1209 \theme@tk={#1}\ifx\relax#1\else\@themetrue\fi\or%
1210 \twins@tk={#1}\ifx\relax#1\else\@twinstrue\fi\or%
1211 \computer@tk={#1}\or%
1212 \comment@tk={#1}\ifx\relax#1\else\@commenttrue\fi\or%
1213 \judgement@tk={#1}\ifx\relax#1\else\@judgementtrue\fi\or%
1214 \sol@tk={#1}%
1215 \fi%
1216 \advance\help@a \one%
1217 \l@klist%
1218 }
1219
1220 \def\split@param#1{%
1221 \@labelfalse\@numberfalse\@auth@rfalse\@cityfalse%
1222 \@sourcenrfalse\@sourcefalse\@dayfalse\@yearfalse%
1223 \@issuefalse\@pagesfalse\@tournamentfalse\@awardfalse%
1224 \@afterfalse\@versionfalse\@correctionfalse\@dedicationfalse%
1225 \@themefalse\@twinsfalse\@commentfalse\@judgementfalse%
1226 \help@a=\z@%
1227 \let\@action=\parse@params\l@klist#1\@list%
1228 }
1229 \newcommand{\solpar}{\par}
1230 \def\@dia@solution{%
1231 \bgroup%
1232 \parindent\z@%
1233 \parskip\tw@p@%
1234 {\bfseries%
1235 \noindent\if@label\showlabel{\the\label@tk}\fi%
1236 \the\number@tk) %
1237 \ifauth@r%
1238 \ifnormal@names%
1239 \the\aut@tk%
1240 \else%
1241 {\@notfirstfalse% We are the first one
1242 \def\name@sep{,}%
1243 \let\@action=\@sol@writename%
1244 \@parseTokenlist\aut@tk;}%
1245 \fi%
1246 \newline%
1247 \fi%
1248 }%
1249 \if@develop\if@judgement\the\judgement@tk\solpar\fi\fi%
1250 \the\sol@tk\solpar%
1251 \if@comment\the\comment@tk\solpar\fi%
1252 \egroup%
1253 }
1254 \grid@width=0.6\p@
1255 \inner@frame=0.6\p@
1256 \outer@frame=1.2\p@
1257 \space@frame=\outer@frame
1258 \v@frame@dist=\tw@p@%
1259 \h@frame@dist=\tw@p@%
1260 \space@frame@dist=\z@

```

```

1261 \v@space@dist=1em
1262 \def\@show@figurine{%
1263     \noindent%
1264     \@figurine@number%
1265     \@figurine@author%
1266     \@figurine@city%
1267     \@figurine@after%
1268     \@figurine@correction%
1269     \@figurine@version%
1270     \@figurine@source%
1271     \@figurine@tournament%
1272     \@figurine@award%
1273     \@figurine@dedic%
1274     \@figurine@pieces%
1275     \@figurine@stip%
1276     \@figurine@twins%
1277     \@figurine@conditions%
1278     \@figurine@remarks%
1279     \@figurine@computer%
1280 }
1281 \def\@figurine@number{\authorfont\thediag)}}
1282
1283 \def\p@rseauthor@figurine#1,#2; {%
1284     \if@notfirst, \else\@notfirsttrue\fi#2 #1%
1285     \l@@klist%
1286 }
1287
1288 \def\@figurine@author{%
1289     {\ifauth@r%
1290         \authorfont\@notfirstfalse%
1291         \let\@action=\p@rseauthor@figurine%
1292         \@parseTokenlist\aut@tk;%
1293         \ \ %
1294     \fi}%
1295 }
1296
1297 \def\@figurine@city{%
1298     {\if@city%
1299         \cityfont\@notfirstfalse%
1300         \let\@action=\p@rsecity\@parseTokenlist\city@tk;%
1301         \ \ \ %
1302     \fi}%
1303 }
1304
1305 \def\@figurine@after{\if@after{\dedicfont\ \ \the\after@tk}\fi}
1306
1307 \def\@figurine@correction{%
1308     \if@correction{\dedicfont\ \ \the\correction@tk}\fi%
1309 }
1310
1311 \def\@figurine@version{%
1312     \if@version{\dedicfont\ \ \the\version@tk}\fi%
1313 }
1314

```

```

1315 \def\@figurine@source{%
1316   {\if@source%
1317     \sourcefont%
1318     \if@sourcenr\the\sourcenr@tk\ \fi%
1319     \the\source@tk%
1320     \if@year%
1321       \ \ %
1322       \if@day%
1323         \ifnum\from@month>\z@%
1324           \the\day@tk.%
1325           \write@month\from@month%
1326           \ifnum\to@month>\z@%
1327             -\write@month\to@month%
1328           \fi%
1329         .%
1330       \fi%
1331     \else%
1332       \write@month\the\from@month%
1333       \ifnum\to@month>\z@%
1334         -\write@month\the\to@month%
1335       \fi%
1336     /\%
1337     \fi%
1338     \the\year@tk%
1339     \fi%
1340     \if@issue , \the\issue@tk\fi%
1341     \if@pages , \the\pages@tk\fi%
1342   \fi}%
1343 }
1344
1345 \def\@figurine@tournament{%
1346   \if@tournament{\awardfont\ \ \the\tournament@tk}\fi%
1347 }
1348
1349 \def\@figurine@award{%
1350   \if@award{\awardfont\ \ \the\award@tk}\fi%
1351 }
1352
1353 \def\@figurine@dedic{%
1354   \if@dedication{\awardfont\ \ \the\dedic@tk}\fi%
1355 }
1356 \def\show@squares#1\@list{\ch@fig{\the\help@a}#1, }
1357
1358 \def\@figurine@pieces{%
1359   {\if@pieces%
1360     \let\@action=\p@rsepieces%
1361     \let\piece@job\show@squares%
1362     \@parseTokenlist\pieces@tk,%
1363   \fi}%
1364 }
1365 \def\@figurine@stip{%
1366   \if@stipulation{\stipfont\ \ \the\stipulation@tk}\fi%
1367 }
1368

```

```

1369 \def\@figurine@conditions{%
1370     \if@condition{\remfont\ \ \the\condition@tk}\fi%
1371 }
1372
1373 \def\@figurine@twins{%
1374     \if@twins{\remfont\ \ \the\twins@tk}\fi%
1375 }
1376
1377 \def\@figurine@computer{%
1378     \ifthenelse{\boolean{showcomputer}}{%
1379         \if@computer\ \computerproofedsymbol\fi%
1380     }{}%
1381 }
1382
1383 \def\@figurine@remarks{%
1384     \if@remark{\stipfont\ \ \the\remark@tk}\fi%
1385 }
1386 \def\do@dia@job{\@write@sol\ifvmode\noindent\fi\unhbox\dia@box}
1387 \def\solhead#1{{\split@param{#1}\@dia@solution}}
1388 \def\@write@sol{%
1389     \ifs@lu%
1390         \immediate\write\s@lfd{%
1391             \noexpand\solhead{%
1392                 {\the\label@tk}%
1393                 {\thediag}%
1394                 {\the\aut@tk}%
1395                 {\the\city@tk}%
1396                 {\the\sourcenr@tk}%
1397                 {\the\source@tk}%
1398                 {\the\day@tk}%
1399                 {\the\from@month}%
1400                 {\the\to@month}%
1401                 {\the\year@tk}%
1402                 {\the\issue@tk}%
1403                 {\the\pages@tk}%
1404                 {\the\tournament@tk}%
1405                 {\the\award@tk}%
1406                 {\the\after@tk}%
1407                 {\the\version@tk}%
1408                 {\the\correction@tk}%
1409                 {\the\dedic@tk}%
1410                 {\the\theme@tk}%
1411                 {\the\twins@tk}%
1412                 {\the\computer@tk}%
1413                 {\the\comment@tk}%
1414                 {\the\judgement@tk}%
1415                 {\the\sol@tk}%
1416             } %end of \solhead
1417         }%
1418     \fi
1419 }
1420 \def\@months#1-#2;{\from@month=#1\to@month=#2\@datetrue}
1421 \def\@dia@writename#1; {\above@newline{\authorfont\@dianame#1; } \l@klist}
1422 \def\@sol@writename#1; {\sep@names\@dianame#1; \l@klist}

```

```

1423 \def\name@sep{, \ }
1424 \def\sep@names{\if@notfirst\name@sep\else\@notfirsttrue\fi}
1425 \def\@checkshort#1/#2#3;{%
1426     \@shortformtrue%
1427     \ifx#2\@e@list\relax%
1428         \@shortformfalse%
1429     \fi%
1430 }
1431 \def\short@christian#1#2-{%
1432     \if@notfirst -\else\@notfirsttrue\fi%
1433     #1.%
1434     \@klist%
1435 }
1436
1437 \def\@write@christian#1/#2;{#1}
1438
1439 \def\write@christian#1;{%
1440     \@checkshort#1/\@e@list;%
1441     \if@shortform\@write@christian#1;\else#1\fi%
1442 }
1443
1444 \def\@write@short#1/#2;{#2}
1445
1446 \def\write@short#1;{%
1447     \@checkshort#1/\@e@list;%
1448     \if@shortform%
1449         \@write@short#1;%
1450     \else%
1451         {\@notfirstfalse\let\@action\short@christian\@klist#1-\@e@list}%
1452     \fi%
1453 }
1454 \def\@fullname#1, #2; {\write@christian#2; #1}
1455 \def\@surname#1, #2; {#1}
1456 \def\@short#1, #2; {\write@short#2;\ #1}
1457 \def\@noname#1, #2; {}
1458 \def\@normalname#1; {#1}
1459 \def\space@vertical{\space@verticaltrue}
1460 \def\space@horizontal{\space@verticalfalse}
1461 \def\cl@arsol{\immediate\openout\s@lfd=\jobname.sol}
1462 \def\getc@lor#1{%
1463     \if#1\ds@white%
1464         \help@a\z@global%
1465         \let\cpd@stepcounterPieces\cpd@stepcounterWhite%
1466     \else\if#1\ds@neutral%
1467         \help@a=6\global%
1468         \let\cpd@stepcounterPieces\cpd@stepcounterNeutral%
1469     \else\if#1\ds@black%
1470         \help@a=12\global%
1471         \let\cpd@stepcounterPieces\cpd@stepcounterBlack%
1472     \else\errmessage{invalid color!}%
1473     \fi\fi\fi%
1474     \getpi@ce%
1475 }
1476

```

```

1477 \def\get@text#1{\text@tk={#1}\read@square}
1478
1479 \def\getpi@ce#1{\if#1B\relax\else
1480   \if#1\ds@knight\advance\help@a\@ne%
1481   \else\if#1\ds@bishop\advance\help@a\tw%
1482   \else\if#1\ds@rook\advance\help@a\thr@@%
1483   \else\if#1\ds@queen\advance\help@a\f@ur%
1484   \else\if#1\ds@king\advance\help@a 5%
1485   \else\if#1C%
1486     % An imitator should not count for any color.
1487     \let\cpd@stepcounterPieces\relax
1488     \advance\help@a 145%
1489   \else\if#1E% Equihopper
1490     \advance\help@a 216%
1491   \else\if#1X% Equihopper senkrecht
1492     \advance\help@a 180%
1493   \else%
1494     \errmessage{invalid piece!}%
1495   \fi\fi\fi\fi\fi\fi\fi\fi\fi%
1496   \futurelet\r@tate\chkr@tate%
1497 }
1498
1499 \def\chkr@tate{%
1500   \if\r@tate \ds@upside@down\advance\help@a 108\let\nextpr@c=\skipr@t\else%
1501   \if\r@tate \ds@left\advance\help@a 36\let\nextpr@c=\skipr@t\else%
1502   \if\r@tate \ds@right\advance\help@a 72\let\nextpr@c=\skipr@t\else%
1503   \let\nextpr@c\piece@job\fi\fi\fi\fi\nextpr@c%
1504 }
1505 \def\skipr@t#1{\piece@job}
1506 \def\l@k{\futurelet\whatsnext\parsefi@lds}
1507 \def\parsefi@lds{%
1508   \if\whatsnext\@e@list%
1509     \let\nextpr@c\relax%
1510   \else
1511     \let\nextpr@c\read@square%
1512   \fi%
1513   \nextpr@c%
1514 }
1515
1516 \def\set@current@square@index#1#2{%
1517   \setcounter{cpd@current@square@index}{#1+\value{cpd@linesmax}*#2}%
1518 }
1519 \def\set@current@square@value#1{%
1520   \expandafter%
1521   \xdef\csname cpd@square@\roman{cpd@current@square@index}\endcsname{#1}%
1522 }
1523 \def\get@current@square@value{%
1524   \setcounter{cpd@current@square@value}%
1525   {\csname cpd@square@\roman{cpd@current@square@index}\endcsname}%
1526 }
1527 \def\set@piece{%
1528   \ifnum\pl@ne=\current@plane%
1529     \cpd@stepcounterPieces%
1530   \set@current@square@index\lin@\r@w%

```

```

1531     \get@current@square@value%
1532     \ifthenelse{\value{cpd@current@square@value}=\m@ne}
1533       {\set@current@square@value{\the\help@a}}%
1534       {\ifthenelse{\value{cpd@current@square@value}=144}%
1535         {\set@current@square@value{\the\help@a+18}}%
1536         {\errmessage{Trying to set a piece to an occupied square}}}%
1537   \fi%
1538   \l@@k%
1539 }
1540 \def\set@nofield, {%
1541   \ifnum\pl@ne=\current@plane%
1542     \set@current@square@index\lin@\r@w%
1543     \get@current@square@value%
1544     \ifthenelse{\value{cpd@current@square@value}=\m@ne}%
1545       {}% This is an empty white square, nothing to do
1546       {\ifthenelse{\value{cpd@current@square@value}=144}%
1547         {\set@current@square@value{\m@ne}}%
1548         {\errmessage{Trying to set a piece to an occupied square}}}%
1549   \fi%
1550   \l@@klist%
1551 }
1552 \def\set@frame, {%
1553   \ifnum\pl@ne=\current@plane%
1554     \@vGrid{\the\lin@}{\the\r@w}\@ne%
1555     \@hGrid{\the\lin@}{\the\r@w}\@ne%
1556     \advance\lin@\@ne%
1557     \@vGrid{\the\lin@}{\the\r@w}\@ne%
1558     \advance\lin@\m@ne\advance\r@w\@ne%
1559     \@hGrid{\the\lin@}{\the\r@w}\@ne%
1560   \fi%
1561   \l@@klist%
1562 }
1563 \def\e@list{\relax}
1564 \def\l@@klist{\futurelet\nextlist\ch@cklist}
1565 \def\ch@cklist{%
1566   \ifx\nextlist\e@list%
1567     \let\nextpr@c=\relax%
1568   \else%
1569     \let\nextpr@c=\@action%
1570   \fi%
1571   \nextpr@c%
1572 }
1573 \def\p@rsepieces#1, {\getc@lor#1\e@list\l@@klist}
1574 \def\p@rsetext#1, {\get@text#1\e@list\l@@klist}
1575 \def\set@text{%
1576   \ifnum\pl@ne=\current@plane%
1577     \raise\r@w\squarewidth\hbox to \z@{%
1578       \hspace\lin@\squarewidth%
1579       \vbox to \squarewidth{\vss%
1580         \hbox to \squarewidth{%
1581           \hss%
1582           {\the\text@tk}%
1583           \hss%
1584         }\vss}%

```

```

1585         \hss%
1586     }%
1587     \fi%
1588     \l@@klist%
1589 }
1590 \def\p@rseauthor#1; {\sh@wauthor#1;\l@@klist}
1591 \def\read@square#1#2{%
1592     \lin@=#1\advance\lin@ by -'a\relax%
1593     \r@w=#2\advance\r@w by \m@ne%
1594     \read@plane%
1595 }
1596 \def\read@plane@normal{\plane@job}
1597
1598 \def\read@plane@stereo{\futurelet\plane@char\get@plane@stereo}
1599
1600 \def\get@plane@stereo{%
1601     \if\plane@char A%
1602         \pl@ne=\@ne\advance\r@w-\tw@\advance\lin@-\tw@%
1603         \let\@plane@job=\skip@plane%
1604     \else\if\plane@char B%
1605         \pl@ne=\tw@\advance\r@w-\tw@\advance\lin@-\tw@%
1606         \let\@plane@job=\skip@plane%
1607     \else\if\plane@char C%
1608         \pl@ne=\thr@@\advance\r@w-\tw@\advance\lin@-\tw@%
1609         \let\@plane@job=\skip@plane%
1610     \else\if\plane@char D%
1611         \pl@ne=\f@ur\advance\r@w-\tw@\advance\lin@-\tw@%
1612         \let\@plane@job=\skip@plane%
1613     \else%
1614         \pl@ne=\z@\let\@plane@job=\plane@job%
1615     \fi\fi\fi\fi%
1616     \@plane@job%
1617 }
1618
1619 \def\skip@plane#1{\plane@job}
1620
1621 \def\read@plane@space#1{\pl@ne=#1\advance\pl@ne by -'A\relax\plane@job}
1622 \def\@vGrid#1#2#3{%
1623     \raise#2\sq@width\hbox to \z@{%
1624         \hskip#1\sq@width\hskip-.5\grid@width%
1625         \vrule height#3\sq@width width\grid@width\hss%
1626     }%
1627 }
1628
1629 \def\@hGrid#1#2#3{%
1630     \raise#2\sq@width\hbox to \z@{%
1631         \hskip#1\sq@width%
1632         \vrule width#3\sq@width height .5\grid@width depth%
1633         .5\grid@width\hss%
1634     }%
1635 }
1636 \def\@selGrid#1#2, {%
1637     \ifnum\pl@ne=\current@plane%
1638         \if#1h%

```

```

1639         \@hGrid#2%
1640     \else\if#1v%
1641         \@vGrid#2%
1642     \else%
1643         \errmessage{Wrong GridSelector #1}%
1644     \fi\fi%
1645 \fi%
1646 \l@@klist%
1647 }
1648 \def\@stdgrid{%
1649     \setbox\plane@box=\vbox{\hbox{%
1650         \help@a=\tw@%
1651         \loop%
1652             \ifnum\help@a<\lines@max%
1653                 \@vGrid{\the\help@a}{0}{\the\rows@max}%
1654                 \advance\help@a\tw@%
1655             \repeat%
1656             \help@a=\tw@%
1657             \loop%
1658                 \ifnum\help@a<\rows@max%
1659                     \@hGrid{0}{\the\help@a}{\the\lines@max}%
1660                     \advance\help@a\tw@%
1661                 \repeat%
1662             \box\plane@box
1663         }}%
1664 }
1665 \def\ds@xlabel#1{%
1666     \label@tk={#1}\@labeltrue%
1667 }
1668
1669 \def\@set@label#1;{\ifds@label\label{#1}\fi}
1670 \def\init@vars{%
1671     \global\s@lufalse
1672     \setboolean{cpd@checkPieceCounts}{false}%
1673     \setcounter{cpd@defWhitePieces}{\z@}%
1674     \setcounter{cpd@defBlackPieces}{\z@}%
1675     \setcounter{cpd@defNeutralPieces}{\z@}%
1676     \setcounter{cpd@whitePieces}{\z@}%
1677     \setcounter{cpd@blackPieces}{\z@}%
1678     \setcounter{cpd@neutralPieces}{\z@}%
1679     \lin@\z@
1680 }
1681
1682 \def\clear@board{%
1683     \ifthenelse{\boolean{allwhite}\and\boolean{switchcolors}}{%
1684         {\errmessage{'allwhite' and 'switchcolors' do not make sense used together.}}%
1685         {\@whitefield=\m@ne\@blackfield=144}%
1686     \ifthenelse{\boolean{allwhite}}{\@blackfield=\m@ne}{}%
1687     \ifthenelse{\boolean{switchcolors}}{\@whitefield=144\@blackfield=\m@ne}{}%
1688     \setcounter{cpd@current@row}{0}%
1689     \whiledo{\value{cpd@current@row}<\value{cpd@rowsmax}}{%
1690         \setcounter{cpd@current@line}{0}%
1691         \whiledo{\value{cpd@current@line}<\value{cpd@linesmax}}{%
1692             \set@current@square@index{\value{cpd@current@line}}{\value{cpd@current@row}}%

```

```

1693         \setcounter{cpd@helper}{\the\current@plane+\value{cpd@current@line}+\value{cpd@current@ro
1694         \ifthenelse{\isodd{\value{cpd@helper}}}{%
1695             {\set@current@square@value{\@whitefield}}%
1696             {\set@current@square@value{\@blackfield}}%
1697         \addtocounter{cpd@current@line}{\@ne}%
1698     }%
1699     \addtocounter{cpd@current@row}{\@ne}%
1700 }%
1701 }
1702
1703 \def\put@row#1{%
1704     \lin@z@%
1705     \help@b=#1%
1706     \advance\help@b\brd@ff%
1707     \hbox{%
1708         \ifthenelse{\boolean{legend}}{%
1709             \advance\@rows'1%
1710             \llap{\raise .25\sq@width\hbox{\legendfont \char\@rows\ }}%
1711         }{%
1712             \if@stereo%
1713                 \ifnum\current@plane>z@%
1714                     \ifnum\@rows=12%
1715                         \llap{\raise .5\sq@width\hbox{\cpd@boardfont c6\ }}%
1716                     \fi%
1717                 \fi%
1718             \fi%
1719             \hbox to \z@{\vbox to \sq@width{}}%
1720             \set@current@square@index{\lin@}{#1}%
1721             \loop%
1722                 \get@current@square@value%
1723                 \ifthenelse{\value{cpd@current@square@value}=\m@ne}%
1724                     {\wF}%
1725                     {\char\value{cpd@current@square@value}}%
1726                 % \ifnum\count\help@b=\m@ne\wF%
1727                 % \else\char\count\help@b\fi%
1728                 \advance\lin@\@ne%
1729                 \addtocounter{cpd@current@square@index}{1}%
1730                 % \advance\help@b\@ne%
1731                 \ifnum\lin@<\lines@max\repeat%
1732             }%
1733 }
1734 % \def\put@line#1{%
1735 %     \lin@z@%
1736 %     \help@b=#1%
1737 %     \advance\help@b\brd@ff%
1738 %     \hbox{%
1739 %         \if@stereo%
1740 %             \ifnum\current@plane>z@%
1741 %                 \ifnum\@rows=12%
1742 %                     \llap{\raise .5\sq@width\hbox{\cpd@boardfont c6\ }}%
1743 %                 \fi%
1744 %             \fi%
1745 %         \fi%
1746 %         \hbox to \z@{\vbox to \sq@width{}}%

```

```

1747 %      \loop%
1748 %          \ifnum\count\help@b=\m@ne\wF%
1749 %          \else\char\count\help@b\fi%
1750 %          \advance\lin@\@ne\advance\help@b\@ne%
1751 %      \ifnum\lin@<\lines@max\repeat%
1752 %  }%
1753 % }
1754 \def\@parseTokenlist#1#2{\expandafter\l@oklist\the#1#2 \e@list}
1755 \def\@addToPlane#1{%
1756     \setbox\plane@box=\vbox{\hbox{%
1757         \@parseTokenlist#1,%
1758         \box\plane@box%
1759     }}%
1760 }
1761 \def\put@plane{%
1762     % We might want gridchess
1763     \if@stdgrid%
1764         \@stdgrid%
1765     \fi%
1766     % Let us first set the fieldframes
1767     \if@fieldframe%
1768         \let\@action\read@square%
1769         \let\plane@job\set@frame%
1770         \@addToPlane\fieldframe@tk%
1771     \fi%
1772     % Now we set text to all squares which are given using \fieldtext
1773     \if@fieldtext%
1774         \let\@action\p@rsettext%
1775         \let\plane@job\set@text%
1776         \@addToPlane\fieldtext@tk%
1777     \fi%
1778     % Then we should add the gridlines
1779     \if@gridlines%
1780         \let\@action\read@plane%
1781         \let\plane@job\@selGrid%
1782         \@addToPlane\gridlines@tk%
1783     \else%
1784         \if@stereo%
1785             \stereo@center%
1786         \fi%
1787     \fi%
1788     % In an 'allwhite' diagram we display dotted lines
1789     \ifthenelse{\boolean{allwhite}}{%
1790         \setbox\plane@box=\vbox{\hbox{%
1791             \psset{unit=\sq@width,linewidth=.4pt,linestyle=dotted,dotsep=.125}%
1792             \setcounter{field@border}{1}%
1793             \whiledo{\value{field@border}<\lines@max}{%
1794                 \psline(\value{field@border},0)(\value{field@border},\rows@max)%
1795                 \addtocounter{field@border}{\@ne}%
1796             }%
1797             \setcounter{field@border}{1}%
1798             \whiledo{\value{field@border}<\rows@max}{%
1799                 \psline(0,\value{field@border})(\lines@max,\value{field@border})%
1800                 \addtocounter{field@border}{\@ne}%

```

```

1801         }%
1802         \box\plane@box%
1803     }}%
1804 }{}%
1805 % Now we should clear the board
1806 \clear@board%
1807 % Let us now parse the list of pieces
1808 \if@pieces%
1809     \let\@action\p@rsepieces%
1810     \let\piece@job\l@k\let\plane@job\set@piece%
1811     \@parseTokenlist\pieces@tk,%
1812 \fi%
1813 % Now we clear all fields, which are given using \nofields
1814 \if@nofields%
1815     \let\@action\read@square%
1816     \let\plane@job\set@nofield%
1817     \@parseTokenlist\nofields@tk,%
1818 \fi%
1819 % Now we can put the pieces to the board
1820 \global\setbox\plane@box=\hbox{%
1821     \vbox{\rlap{\box\plane@box}}%
1822     \vbox{%
1823         \chessfont%
1824         \baselineskip=\z@\lineskip=\z@%
1825         \@rows=\rows@max%
1826         % \multiply\@rows by \lines@max%
1827         \loop%
1828             \advance\@rows \m@ne%
1829             \put@row\@rows%
1830         \ifnum\@rows>\z@\repeat%
1831     }%
1832     % Put a legend if wanted
1833     \ifthenelse{\boolean{legend}}{%
1834         \vbox to \z@{%
1835             \vbox to \z@{\vss}%
1836             \llap{\hbox{\hspace*{\inner@frame}%
1837                 \lin@\z@%
1838                 \loop%
1839                     \hbox to \sq@width{\hfill\advance\lin@{a\legendfont\char\lin@}\hfill}%
1840                     \advance\lin@\@ne%
1841                 \ifnum\lin@<\lines@max\repeat%
1842             }}\vss}%
1843         }{}%
1844     }%
1845 }
1846 \def\put@sq@normal{%
1847     \put@plane%
1848     \setbox\sq@box=\hbox{%
1849         \inner@hbox{\box\plane@box}%
1850     }%
1851 }
1852 \def\put@sq@stereo{%
1853     \setbox\sq@box=\hbox{\hfil\vbox{%
1854         \current@plane=5%

```

```

1855 \vskip\v@space@dist%
1856 \loop%
1857 \advance\current@plane\m@ne%
1858 \ifnum\current@plane=z@%
1859 \lines@max=@ight%
1860 \rows@max=@ight%
1861 \else%
1862 \lines@max=f@ur%
1863 \rows@max=f@ur%
1864 \fi%
1865 % Now we should clear the board
1866 \begingroup% We need this for inner loops!
1867 \clear@board%
1868 \put@plane%
1869 \endgroup%
1870 \hbox to \bd@width{%
1871 \hfil%
1872 \inner@hbox{\box\plane@box}%
1873 \ifcase\current@plane\or%
1874 \rlap{\cpd@boardfont\ A}\or%
1875 \rlap{\cpd@boardfont\ B}\or%
1876 \rlap{\cpd@boardfont\ C}\or%
1877 \rlap{\cpd@boardfont\ D}\or%
1878 \fi%
1879 \hfil%
1880 }%
1881 \vskip\v@space@dist%
1882 \ifnum z@<\current@plane\repeat%
1883 }\hfil}%
1884 }
1885
1886 \def\stereo@center{%
1887 \ifnum\current@plane=z@%
1888 \setbox\plane@box=\vbox{\hbox{%
1889 @hGrid\tw@tw@f@ur@hGrid\tw@ 6f@ur%
1890 @vGrid\tw@tw@f@ur@vGrid6\tw@f@ur%
1891 \box\plane@box%
1892 }}%
1893 \fi%
1894 }
1895 \def\put@sq@space@vertical{%
1896 \setbox\sq@box=\hbox{\hfil\vbox{%
1897 \current@plane=planes@max%
1898 \vskip\v@space@dist%
1899 \loop%
1900 \advance\current@plane\m@ne%
1901 % Now we should clear the board
1902 \begingroup% We use inner loops!
1903 \clear@board%
1904 \put@plane%
1905 \hbox to \bd@width{%
1906 \inner@hbox{\box\plane@box}%
1907 \advance\current@plane'A%
1908 \rlap{\cpd@boardfont\ \char\current@plane}}%

```

```

1909         }%
1910         \endgroup%
1911         \vskip\v@space@dist%
1912         \ifnum\z@<\current@plane\repeat%
1913     }\hfil}%
1914 }
1915
1916 \def\put@sqs@space@horizontal{%
1917     \setbox\sq@box=\hbox{%
1918         \current@plane=\z@%
1919         \hskip\h@space@dist%
1920         \loop%
1921             % Now we should clear the board
1922             \begin@group% We use inner loops!
1923             \clear@board%
1924             \put@plane%
1925             \hbox to \bd@width{%
1926                 \inner@hbox{\box\plane@box}%
1927                 \advance\current@plane'A%
1928                 \rlap{{\cpd@boardfont\ \char\current@plane}}}%
1929             }%
1930             \endgroup%
1931             \hskip\h@space@dist%
1932             \advance\current@plane@one%
1933             \ifnum\planes@max>\current@plane%
1934                 \repeat%
1935         }%
1936 }
1937
1938 \def\put@sqs@space{%
1939     \ifspace@vertical%
1940         \put@sqs@space@vertical%
1941     \else%
1942         \put@sqs@space@horizontal%
1943     \fi%
1944 }
1945 \def\@inner@vframe{%
1946     \if@vframe%
1947         \vrule width \inner@frame%
1948     \else%
1949         \hskip\inner@frame%
1950     \fi%
1951 }
1952
1953 \def\@inner@hframe{%
1954     \if@hframe%
1955         \hrule height \inner@frame%
1956     \else%
1957         \vskip\inner@frame%
1958     \fi%
1959 }
1960 \def\inner@v@frame@rule{%
1961     \if@stereo%
1962         \@inner@vframe%

```

```

1963 \else\if@space%
1964 \@inner@vframe%
1965 \else\if@leaveOuter%
1966 \vrule width \inner@frame%
1967 \else%
1968 \@inner@vframe%
1969 \fi\fi\fi%
1970 }
1971
1972 \def\inner@h@frame@rule{%
1973 \if@stereo%
1974 \@inner@hframe%
1975 \else\if@space%
1976 \@inner@hframe%
1977 \else\if@leaveOuter%
1978 \hrule height \inner@frame%
1979 \else%
1980 \@inner@hframe%
1981 \fi\fi\fi%
1982 }
1983
1984 \def\inner@henbox#1{%
1985 \hbox{%
1986 \inner@v@frame@rule%
1987 \vbox{\inner@h@frame@rule#1\inner@h@frame@rule}%
1988 \inner@v@frame@rule%
1989 }%
1990 }
1991 \def\@outer@vrule{\vrule width \outer@frame}
1992
1993 \def\@outer@hrule{\hrule height \outer@frame}
1994 \def\outer@v@frame@rule{%
1995 \if@stereo%
1996 \@outer@vrule%
1997 \else\if@space%
1998 \@outer@vrule%
1999 \else\if@leaveOuter%
2000 \if@vframe\@outer@vrule\else\hskip\outer@frame\fi%
2001 \else%
2002 \@outer@vrule%
2003 \fi\fi\fi%
2004 }
2005
2006 \def\outer@h@frame@rule{%
2007 \if@stereo%
2008 \@outer@hrule%
2009 \else\if@space%
2010 \@outer@hrule%
2011 \else\if@leaveOuter%
2012 \if@hframe\@outer@hrule\else\vskip\outer@frame\fi%
2013 \else%
2014 \@outer@hrule%
2015 \fi\fi\fi%
2016 }

```

```

2017
2018 \def\outer@henbox#1{%
2019     \outer@h@frame@rule%
2020     \hbox{%
2021         \outer@v@frame@rule%
2022         \ifspace@vertical%
2023             \hskip\h@frame@dist%
2024         \fi%
2025         \vbox{%
2026             \ifspace@vertical%
2027                 \vskip\v@frame@dist%
2028             \else%
2029                 \vskip\v@space@dist%
2030             \fi%
2031             #1%
2032             \ifspace@vertical%
2033                 \vskip\v@frame@dist%
2034             \else%
2035                 \vskip\v@space@dist%
2036             \fi%
2037         }%
2038         \ifspace@vertical%
2039             \hskip\h@frame@dist%
2040         \fi%
2041         \outer@v@frame@rule%
2042     }%
2043     \outer@h@frame@rule%
2044 }
2045 \def\ch@fig#1{%
2046     \ifvmode\noindent\fi%
2047     \hbox{\chtextfont\lower.1\fontdimen\tw@\chtextfont\hbox{\char#1}}%
2048 }
2049 \def\@dia@index{%
2050     \ifundefined{newindex}%
2051     {\errmessage{You should add documentstyle-option 'index'}}{}%
2052 }
2053
2054 \def\showlabel#1{%
2055     \if@develop%
2056         \raise1ex\hbox{\labelfont#1}\penalty\exhyphenpenalty%
2057     \fi%
2058 }
2059
2060 \def\@aidxitem#1, #2, #3{%
2061     \par\medskip#1, \write@christian#2; \dotfill #3%
2062 }
2063
2064 \def\dia@index#1\@sep#2[#3]{\index[#3]{#2/showlabel{#1}}}
2065
2066 \def\parse@aindex#1; {%
2067     \expandafter\dia@index\the\label@tk\@sep#1[author]\l@klist%
2068 }
2069
2070 \def\@aindex{%

```

```

2071 \if@aindex%
2072 \ifnormal@names%
2073 \errmessage{Cannot create index entries with normalnames}%
2074 \else\ifauth@r%
2075 \let\@action=\parse@aindex\@parseTokenlist\aut@tk;%
2076 \fi\fi%
2077 \fi%
2078 }
2079
2080 \def\x@sindex#1\@sep{\expandafter\dia@index\the\label@tk\@sep#1[source]}
2081
2082 \def\@sindex{%
2083 \if@sindex\if@source%
2084 \expandafter\x@sindex\the\source@tk\@sep%
2085 \fi\fi%
2086 }
2087
2088 \def\parse@tindex#1, {%
2089 \expandafter\dia@index\the\label@tk\@sep#1[theme]\l@klist%
2090 }
2091
2092 \def\@tindex{%
2093 \if@tindex\if@theme%
2094 \let\@action=\parse@tindex\@parseTokenlist\theme@tk,%
2095 \fi\fi%
2096 }
2097 \def\@setPieceColor#1#2#3{%
2098 \gdef\ds@white{#1}\gdef\ds@black{#2}\gdef\ds@neutral{#3}%
2099 }
2100
2101 \def\@setPieceSpec#1#2#3#4#5#6{%
2102 \gdef\ds@king{#1}\gdef\ds@queen{#2}\gdef\ds@rook{#3}%
2103 \gdef\ds@bishop{#4}\gdef\ds@knight{#5}\gdef\ds@pawn{#6}%
2104 }
2105
2106 \def\@setPieceRotation#1#2#3{%
2107 \gdef\ds@left{#1}\gdef\ds@right{#2}\gdef\ds@upsideup{#3}%
2108 }
2109 \def\loop@rotation{%
2110 \bgroup%
2111 \n@cnt\z@%
2112 \help@a\z@%
2113 \loop%
2114 \ifcase\n@cnt%
2115 \def\@theRotation{}%
2116 \or%
2117 \def\@theRotation{\ds@left}%
2118 \or%
2119 \def\@theRotation{\ds@right}%
2120 \or%
2121 \def\@theRotation{\ds@upsideup}%
2122 \fi%
2123 \loop@color%
2124 \advance\n@cnt\@ne%

```

```

2125         \advance\help@a by 36\relax%
2126         \ifnum\n@cnt<\f@ur\repeat%
2127         \egroup%
2128     }
2129
2130 \def\loop@color{%
2131     \bgroup%
2132     \w@cnt\z@%
2133     \loop%
2134         \ifcase\w@cnt%
2135             \def\@theColor{\ds@white}%
2136         \or%
2137             \def\@theColor{\ds@neutral}%
2138         \or%
2139             \def\@theColor{\ds@black}%
2140         \fi%
2141         \loop@piece%
2142         \advance\w@cnt\@ne%
2143         \advance\help@a by 6%
2144         \ifnum\w@cnt<\thr@@\repeat%
2145     \egroup%
2146 }
2147
2148 \def\loop@piece{%
2149     \bgroup%
2150     \b@cnt\z@%
2151     \loop%
2152         \ifcase\b@cnt%
2153             \def\@thePiece{\ds@pawn}%
2154         \or%
2155             \def\@thePiece{\ds@knight}%
2156         \or%
2157             \def\@thePiece{\ds@bishop}%
2158         \or%
2159             \def\@thePiece{\ds@rook}%
2160         \or%
2161             \def\@thePiece{\ds@queen}%
2162         \or%
2163             \def\@thePiece{\ds@king}%
2164         \fi%
2165         \expandafter\xdef\csname%
2166             \@theColor\@thePiece\@theRotation\endcsname{%
2167             \noexpand\ch@fig{\the\help@a}%
2168         }
2169         \advance\b@cnt\@ne%
2170         \advance\help@a by \@ne%
2171         \ifnum\b@cnt<6\repeat%
2172     \egroup%
2173 }
2174 \elchfont\@f@selch
2175
2176 \defaultelchfont%
2177 \diagnum{\@ne}
2178 %% \figcnttrue

```

```

2179 \setboolean{piececounter}{true}
2180 \def\@dianame{\@fullname}
2181 \def\@solname{\@fullname}
2182 \space@verticaltrue
2183 \diagnumbering{arabic}
2184 \def\write@month{\@arabic}%
2185 \diagleft
2186 \cl@arsol
2187 \let\orig@author=\author
2188 \let\orig@day=\day
2189 \let\orig@month=\month
2190 \let\orig@year=\year
2191 \let\orig@label=\label
2192 \DefinePieces{wsn}{KDTLSB}{LRU}
2193 \newdimen\normalboardwidth
2194 \def\setboardwidth{%
2195   \normalboardwidth=\@ight\fontdimen\tw@\chessfont%
2196   \advance\normalboardwidth\tw@\inner@frame%
2197   \advance\normalboardwidth\tw@\h@frame@dist%
2198   \advance\normalboardwidth\tw@\outer@frame%
2199 }
2200
2201 \setboardwidth
2202
2203 \</style>

```

Index

Numbers written in *italic* refer to the page where the corresponding entry is described; numbers underlined refer to the code line of the definition; numbers in *roman* refer to the code lines where the entry is used.

Symbols			
\, 611	\@aindexfalse 228	\@correctionfalse	
\@@piecedef . 1146, 1150	\@aindextrue 826 178, 1224	
\@0 580–582	\@awardfalse . 175, 1223	\@correctiontrue .	
\@action . 754, 936,	\@awardtrue .. 653, 1204 665, 1207	
951, 1085, 1116,	\@blackfield . . . 69,	\@currentlabel . . .	
1118, 1132,	1685–1687, 1696 304, 503, 598	
1134, 1172,	\@checkshort	\@datefalse 169	
1182, 1227,	. 1425, 1440, 1447	\@datetrue	
1243, 1291,	\@cityfalse .. 166, 1221	625, 629, 637, 1420	
1300, 1360,	\@citytrue .. 613, 1194	\@dayfalse .. 170, 1222	
1451, 1569,	\@cnt@box	\@daytrue . . . 625, 1197	
1768, 1774,	. 96, 454, 463, 468	\@dedicationfalse	
1780, 1809,	\@cnt@wd .. 97, 463, 464 179, 1224	
1815, 2075, 2094	\@commentfalse 185, 1225	\@dedicationtrue .	
\@addToPlane . 1755,	\@commenttrue 771, 1212 669, 1208	
1770, 1776, 1782	\@computerfalse .. 183	\@developfalse . . . 207	
\@afterfalse . 176, 1224	\@computertrue . . . 759	\@developtrue 807	
\@aftertrue .. 661, 1205	\@condition .. 730, 732	\@dia@after .. 898, 957	
\@aidxitem .. 841, 2060	\@conditionfalse . 197	\@dia@authors 896, <u>930</u>	
\@aindex 300, 499, 2070	\@conditiontrue .. 733	\@dia@award .. 903, 1032	
		\@dia@city .. 897, 945	

\@dia@condition ..	\@figurine@number	\@noname 1457
.. 913, 1071, 1126 1264, 1281	\@normalname 1458
\@dia@correction ..	\@figurine@pieces	\@notfirstfalse ..
..... 901, 1010 1274, 1358	... 950, 1241,
\@dia@date ... 975,	\@figurine@remarks	1290, 1299, 1451
995, 1004, 1026 1278, 1383	\@notfirsttrue 941,
\@dia@dedic .. 904, 1041	\@figurine@source	1284, 1424, 1432
\@dia@fidealbum 1270, 1315	\@numberfalse 163, 1221
..... 905, 1052	\@figurine@stip ..	\@numbertrue . 598, 1192
\@dia@index 1275, 1365	\@outer@hrule
824, 830, 836, 2049	\@figurine@tournament	.. 1993, 2008,
\@dia@number . 895, <u>927</u> 1271, 1345	2010, 2012, 2014
\@dia@piecedefs ..	\@figurine@twins ..	\@outer@vrule
..... 918, 1167 1276, 1373	.. 1991, 1996,
\@dia@remark . 919, 1178	\@figurine@version	1998, 2000, 2002
\@dia@solution 1269, 1311	\@pagesfalse . 173, 1223
..... 1230, 1387	\@fselch 29, 2174	\@pagetrue .. 645, 1202
\@dia@source . 900, 988	\@fullname	\@parseNeutralCount
\@dia@stipulation	. 1454, 2180, 2181 697, 701
.... 35, 910, 1061	\@gridlinesfalse . 189	\@parseTokenlist ..
\@dia@tournament ..	\@gridlinetrue .. 718	937, 951, 1120,
..... 902, 1019	\@hGrid 1555,	1136, 1173,
\@dia@twins	1559, 1629,	1183, 1244,
.. 916, 1068, 1110	1639, 1659, 1889	1292, 1300,
\@dia@version 899, 966	\@hframefalse	1362, 1754,
\@dia@writename 779, 783, 791	1757, 1811,
..... 936, 1421	\@hframetrue 42	1817, 2075, 2094
\@diagram <u>232</u>	\@ifundefined ... 2050	\@parseWhiteAndBlackCount
\@dianame 569,	\@ight . 25, 234, 314, 684, 687
1421, 1422, 2180	315, 363, 368,	\@piecedef ... 751,
\@dianumber@prefix	1859, 1860, 2195	754, 1154, 1163
.... 572, 587, 590	\@inner@hframe 1953,	\@piecedefsfalse . 199
\@fidealbumfalse . 180	1974, 1976, 1980	\@piecedefstrue .. 748
\@fidealbumtrue .. 673	\@inner@vframe 1945,	\@pieces . 679, 685, 704
\@fieldframefalse 190	1962, 1964, 1968	\@piecesfalse 186
\@fieldframetrue . 722	\@issuefalse . 172, 1223	\@piecetrue 705
\@fieldtextfalse . 187	\@issuetrue .. 641, 1201	\@pkelch 28
\@fieldtexttrue .. 709	\@judgementfalse ..	\@plane@job .. 1603,
\@figurine@after 184, 1225	1606, 1609,
..... 1267, 1305	\@judgementtrue ..	1612, 1614, 1616
\@figurine@author 775, 1213	\@remarkfalse 198
..... 1265, 1288	\@labelfalse . 162, 1221	\@remarktrue 744
\@figurine@award ..	\@labeltrue . 1191, 1666	\@rows .. 214, 1709,
..... 1272, 1349	\@leaveOuterfalse 783	1710, 1714,
\@figurine@city ..	\@leaveOutertrue .. 43	1741, 1825,
..... 1266, 1297	\@leftfalse 1101	1826, 1828-1830
\@figurine@computer	\@lefttrue	\@selGrid .. 1636, 1781
..... 1279, 1377	.. 1084, 1093,	\@sep ... 2064, 2067,
\@figurine@conditions	1103, 1113,	2080, 2084, 2089
..... 1277, 1369	1129, 1170, 1181	\@set@label
\@figurine@correction	\@lines 213	... 307, 507, 1669
..... 1268, 1307	\@months 633, 1420	\@setPieceColor ..
\@figurine@dedic ..	\@nofieldsfalse .. 188 845, 2097
..... 1273, 1353	\@nofieldstrue ... 713	

\@setPieceRotation	\@tindextrue 838	1012, 1021,
..... 845, 2106	\@tournamentfalse	1034, 1043, 1421
\@setPieceSpec 845, 2101 174, 1223	\above@newline . . . 1054
\@short 1456	\@tournamenttrue .	\addtocounter . 574,
\@shortformfalse 1428 649, 1203	1697, 1699,
\@shortformtrue . 1426	\@twins 737, 739	1729, 1795, 1800
\@show@album 1050, 1055	\@twinsfalse . 181, 1225	\after 660
\@show@city . . 941, 943	\@twinskip	\after@tk
\@show@computertrue 195	. 1059, 1067, 1070	142, 661, 961,
\@show@figurine . .	\@twinstrue . . 740, 1210	1205, 1305, 1406
..... 510, 1262	\@typisfalse 200	\allwhite 10, 72
\@sindex 301, 500, 2082	\@typistrue 281	\and 1683
\@sindexfalse 229	\@vGrid 1554,	\any 13, 575
\@sindextrue 832	1557, 1622,	\arabic 447, 448
\@sirname 1455	1641, 1653, 1890	\AtBeginDocument . . 20
\@sol@writename . .	\@versionfalse 177, 1224	\aut@tk . . 130, 605,
..... 1243, 1422	\@versiontrue 657, 1206	934, 937, 1193,
\@solname . . . 570, 2181	\@vframefalse	1239, 1244,
\@sourcefalse 168, 1222 779, 783, 787	1292, 1394, 2075
\@sourcenrfalse . .	\@vframetrue 41	\auth@rfalse . 165, 1221
..... 167, 1222	\@whitefield . . . 74,	\auth@rtrue . . 605, 1193
\@sourcenrtrue 617, 1195	1685, 1687, 1695	\author 4, 272,
\@sourcetrue . 621, 1196	\@widediasfalse 201, 820	287, 478, 486, 2187
\@spacediagram 259, 262	\@widediastrue . . . 819	\authorfont
\@spacefalse 227	\@write@christian	517, 928, 934,
\@spacetrue 258 1437, 1441	1281, 1290, 1421
\@specialfalse . . . 164	\@write@short 1444, 1449	\authorindex . . 14, 841
\@specialtrue 597	\@write@sol . 1386, 1388	\award 5, 652
\@start@diagram . .	\@yearfalse . . 171, 1222	\award@tk
247, 254, 268, 270	\@yeartrue . . 637, 1200	141, 653, 1036,
\@stdgrid . . 1648, 1764		1204, 1350, 1405
\@stdgridfalse . . . 191		\awardfont . . . 517,
\@stdgridtrue 795	_ . . . 415, 447, 457,	1023, 1036,
\@stereofalse 226	584, 756, 853,	1346, 1350, 1354
\@stereotrue 251	941, 993, 995–	
\@stip@box 98	997, 1026, 1059,	B
\@stipulationfalse 196	1159, 1293,	\b@cnt . . . 60, 2150,
\@stipulationtrue 726	1301, 1305,	2152, 2169, 2171
\@test@box	1308, 1312,	\baselineskip 408, 1824
. . 101, 1090, 1091	1318, 1321,	\bd@width 110,
\@test@dimen 102	1346, 1350,	314, 325, 340–
\@theColor . . 2135,	1354, 1366,	342, 347, 348,
2137, 2139, 2166	1370, 1374,	354, 362, 370,
\@thePiece	1379, 1384,	1870, 1905, 1925
. . 2153, 2155,	1423, 1456,	\below@newline 211,
2157, 2159,	1710, 1715,	921, 1067, 1070,
2161, 2163, 2166	1742, 1874–	1074, 1078,
\@theRotation	1877, 1908, 1928	1084, 1092,
. . 2115, 2117,		1097, 1106,
2119, 2121, 2166	A	1122, 1138,
\@themefalse . 182, 1225	\above@newline . . .	1156, 1171, 1185
\@themetrue . . 767, 1209 892, 928,	\board@width . . 109,
\@tindex 302, 501, 2092	933, 948, 960,	315, 326–328,
\@tindexfalse 230	968, 990, 1001,	341, 343–345,

354–358, 365,	\cpd@boardfont ...	\dia@below .. 438, <u>907</u>
368, 371–373,	... <u>517</u> , 1715,	\dia@box
378, 385, 413,	1742, 1874–	95, 405, 441, 1386
423, 425, 434, 468	1877, 1908, 1928	\dia@index .. 2064,
\brd@ff 105, 1706, 1737	\cpd@checkNeutral	2067, 2080, 2089
 690, 693	\dia@lineskip . 107,
C	\cpd@nextproc	408, 535, 547, 559
\c@board@nr 590	692, 695, 697, 699	\dia@type
\centering .. 410, 592	\cpd@stepcounterBlack	. 31, 536, 548, 560
\ch@cklst .. 1564, 1565 88, 1471	\diagcenter . 6, <u>592</u> , 819
\ch@fig 848,	\cpd@stepcounterNeutral	\diagleft . 6, <u>592</u> , 2185
851, 856, 859, 89, 1468	\diagram 8, 571, 589, 2177
862, 865, 868,	\cpd@stepcounterPieces	\diagramming ...
871, 874, 877,	90, 1465, 1468, 7, 588, 2183
880, 883–889,	1471, 1487, 1529	\diagram <u>232</u>
1356, 2045, 2167	\cpd@stepcounterWhite	diagram (environ-
\check@piecedef 87, 1465	ment) 4
..... 1142, 1152	\current@plane . 57,	diagram[] (environ-
\chessfont 312, 529,	244, 1528,	ment) 8
532, 541, 544,	1541, 1553,	\diagramx 8, 15, <u>527</u> , 564
553, 556, 853,	1576, 1637,	\diagramxi 8, 16, <u>527</u> , 565
854, 1823, 2195	1693, 1713,	\diagramxii
\chr@tate . 1496, 1499	1740, 1854,	.. 8, 17, <u>527</u> , 566
\chtextfont	1857, 1858,	\diagright 6, <u>592</u>
530, 533, 542,	1873, 1882,	\dianamestyle .. 6, 569
545, 554, 557, 2047	1887, 1897,	\do@dia@job .. 442, 1386
\city 5, 612	1900, 1907,	\do@put@count 446, 460
\city@tk	1908, 1912,	\dotfill 2061
131, 613, 951,	1918, 1927,	\Dr 4, <u>608</u>
1194, 1300, 1395	1928, 1932, 1933	\ds@academictitle <u>608</u>
\cityfont <u>517</u> , 950, 1299		\ds@author 272, 478, <u>601</u>
\cl@arsol 818, 1461, 2186	D	\ds@bishop 847, 850,
\clear@board	\day 5, 273,	1481, 2103, 2157
.. 1682, 1806,	288, 479, 487, 2188	\ds@black
1867, 1903, 1923	\day@tk 134, 625, 978,	847, 850, 854,
\Co 758	1197, 1324, 1398	861, 870, 879,
\CodelineIndex 6	\dedic 5, <u>798</u>	1469, 2098, 2139
\col@action	\dedic@tk	\ds@day .. 273, 479, 624
. 1144, 1146, 1148	145, 669, 1045,	\ds@king 1484, 2102, 2163
\comment 6, 770	1208, 1354, 1409	\ds@knight
\comment@tk 150, 771,	\dedication . 5, 668, 801	. 1480, 2103, 2155
1212, 1251, 1413	\dedicfont <u>517</u> , 961,	\ds@label 276, 482, <u>601</u>
\computer@tk .. 151,	970, 1014, 1045,	\ds@labelfalse ... 602
759, 1211, 1412	1305, 1308, 1312	\ds@labeltrue 602
\computerproofedsymbol	\DefaultDiagramSize	\ds@left 1501, 2107, 2117
. 7, 193, 457, 1379 <u>14</u> , 20	\ds@month 274, 480, 628
\cond 5, <u>798</u>	\defaultelchfont .	\ds@neutral
\condition . 5, 729, 803	... 515, <u>562</u> , 2176	858, 867, 876,
\condition@tk . 159,	\DefinePieces	1466, 2098, 2137
733, 1136, 1370	... 13, 844, 2192	\ds@pawn ... 2103, 2153
\correction 664	\develop 14, 806	\ds@queen
\correction@tk ...	\di@nofalse 586	. 1483, 2102, 2161
144, 665, 1014,	\di@notrue 589	\ds@right
1207, 1308, 1408	\dia@above .. 418, <u>891</u>	. 1502, 2107, 2119

\ds@rook 1482, 2102, 2159	1323, 1325,	1730, 1736,
\ds@upside down ...	1332, 1399, 1420	1737, 1748–1750
. 1500, 2107, 2121	\further 575	\hfil 468, 1099, 1853,
\ds@white 847, 853,	\futurelet ... 690,	1871, 1879,
855, 864, 873,	1152, 1496,	1883, 1896, 1913
1463, 2098, 2135	1506, 1564, 1598	\horizontalcylinder
\ds@xlabel .. 602, 1665	 6, 10, 790
\ds@year . 275, 481, 636	G	\hspace 1836
	\get@current@square@value	
E 1523,	I
\e@list 684,	1531, 1543, 1722	\if@after 176, 958, 1305
755, 1227,	\get@plane@stereo	\if@aindex .. 228, 2071
1356, 1427, 1598, 1600	\if@award 175, 1033, 1350
1440, 1447,	\get@text .. 1477, 1574	\if@city 166, 947, 1298
1451, 1508,	\getc@lor .. 1462, 1573	\if@comment .. 185, 1251
1563, 1566,	\getpi@ce .. 1474, 1479	\if@computer
1573, 1574, 1754	\grid@width ... 114,	... 183, 457, 1379
\elchfont . 26, 515,	1254, 1624,	\if@condition
528, 540, 552, 2174	1625, 1632, 1633	... 197, 1127, 1370
\EnableCrossrefs ... 5	\gridchess 6, 798	\if@correction ...
\enddiagram 286, 473, 474	\gridlines ... 11, 717	... 178, 1011, 1308
\endfigurine 485	\gridlines@tk	\if@date 169,
\endspacediagram . 474	... 154, 718, 1782	995, 1000, 1025
\endstereodiagram 473		\if@day
environments:	H	170, 977, 983, 1322
diagram 4	\h@frame@dist . 119,	\if@dedication ...
diagram[] 8	316, 317, 327,	... 179, 1042, 1354
figurine 11	330, 331, 344,	\if@develop ... 207,
spacediagram[] . 9	361, 372, 1259,	414, 1249, 2055
stereodiagram .. 9	2023, 2039, 2197	\if@fidealbum 180, 1053
\ExecuteOptions ... 18	\h@space@dist	\if@fieldframe 190, 1767
 122, 349,	\if@fieldtext 187, 1773
F	350, 352, 355,	\if@first 209
\f@ur 24, 1483, 1611,	357, 1919, 1931	\if@gridlines 189, 1779
1862, 1863,	\he@dpos . 418, 592–594	\if@hframe 42, 1954, 2012
1889, 1890, 2126	\head@width 111, 376,	\if@issue 172, 996, 1340
\fidealbum 672	378, 409, 424, 433	\if@judgement 184, 1249
\fidealbum@tk	\help@a 92,	\if@label 162,
... 146, 673, 1055	1190, 1216,	306, 414, 506, 1235
\fieldframe 11, 721, 799	1226, 1356,	\if@leaveOuter ...
\fieldframe@tk ...	1464, 1467, 43, 1965,
... 153, 722, 1770	1470, 1480–	1977, 1999, 2011
\fieldtext 12, 708, 1772	1484, 1488,	\if@left 103,
\fieldtext@tk	1490, 1492,	1090, 1096, 1100
... 156, 709, 1776	1500–1502,	\if@nofields . 188, 1814
\figcnttrue 2178	1533, 1535,	\if@notfirst
\figurine 475	1650, 1652– 208, 941,
figurine (environ-	1654, 1656,	1284, 1424, 1432
ment) 11	1658–1660,	\if@number 163, 292, 491
\fontdimen	2112, 2125,	\if@pages 173, 997, 1341
... 312, 2047, 2195	2143, 2167, 2170	\if@piecedefs 199, 1168
\from@month ... 135,	\help@b 93,	\if@pieces
629, 976, 978,	1705, 1706,	... 186, 1359, 1808
980, 1198,	1726, 1727,	

<code>\if@remark</code>	634, 638, 642,	<code>\label</code> 8
.. 198, 1179, 1384	646, 650, 654,	<code>\label@tk</code> 127, 297,
<code>\if@shortform</code>	658, 662, 666,	307, 415, 496,
... 45, 1441, 1448	670, 674, 706,	507, 1191, 1235,
<code>\if@show@computer</code> 195	710, 714, 719,	1392, 1666,
<code>\if@sindex</code> .. 229, 2083	723, 727, 734,	2067, 2080, 2089
<code>\if@source</code> 168, 989,	741, 745, 749,	<code>\labelfont</code> 415, <u>517</u> , 2056
1025, 1316, 2083	760, 764, 768,	<code>\leftrightharrow</code> .. 576
<code>\if@sourcenr</code>	772, 776, 780,	<code>\legend</code> 7
... 167, 993, 1318	784, 788, 792,	<code>\legendfont</code>
<code>\if@space</code>	796, 808, 812, 816	.. <u>517</u> , 1710, 1839
227, 329, 1963,	<code>\Imi</code> 12, 883	<code>\lin@</code> 55, 1530, 1542,
1975, 1997, 2009	<code>\imitatorfalse</code> ... 204	1554–1559,
<code>\if@special</code> 164	<code>\init@vars</code> 271, 477, 1670	1578, 1592,
<code>\if@stdgrid</code> .. 191, 1763	<code>\inner@frame</code> .. 115,	1602, 1605,
<code>\if@stereo</code> ... 226,	325, 326, 342,	1608, 1611,
313, 1712, 1739,	343, 348, 370,	1679, 1704,
1784, 1961,	371, 1255, 1836,	1720, 1728,
1973, 1995, 2007	1947, 1949,	1731, 1735,
<code>\if@stipulation</code> 196,	1955, 1957,	1750, 1751,
909, 1062, 1366	1966, 1978, 2196	1837, 1839–1841
<code>\if@theme</code> ... 182, 2093	<code>\inner@h@frame@rule</code>	<code>\linebreak</code> 892
<code>\if@tindex</code> .. 230, 2093 1972, 1987	<code>\lines@max</code> ... 215,
<code>\if@tournament</code> 174,	<code>\inner@henbox</code>	238, 263, 340,
1000, 1020, 1346	.. 1849, 1872,	347, 362, 363,
<code>\if@twins</code> 181, 1111, 1374	1906, 1926, 1984	365, 1652,
<code>\if@typis</code> 200	<code>\inner@v@frame@rule</code>	1659, 1731,
<code>\if@version</code> 1960, 1986, 1988	1751, 1793,
... 177, 967, 1312	<code>\isodd</code> 1694	1799, 1826,
<code>\if@vframe</code> 41, 1946, 2000	<code>\issue</code> 5, 640	1841, 1859, 1862
<code>\if@widedias</code> . 201, 375	<code>\issue@tk</code>	<code>\lineskip</code> 1824
<code>\if@year</code> 171, 985, 1320	138, 641, 996,	<code>\loop@color</code> . 2123, 2130
<code>\ifauth@r</code> 165, 931,	1201, 1340, 1402	<code>\loop@piece</code> . 2141, 2148
1237, 1289, 2074		<code>\loop@rotation</code> 846, 2109
<code>\ifdi@no</code> 50, 928	J	<code>\lra</code> 13, <u>575</u>
<code>\ifds@label</code> .. 231, 1669	<code>\jobname</code> 818, 1461	
<code>\iffigcnt</code> 52	<code>\judgement</code> 6, 774	M
<code>\ifimitator</code> 204	<code>\judgement@tk</code>	<code>\m@ne</code> 465,
<code>\ifnormal@names</code> 205, 149, 775,	574, 1532, 1544,
932, 1238, 2072	1213, 1249, 1414	1547, 1558,
<code>\ifs@lu</code> 206, 1389		1593, 1685–
<code>\ifspace@vertical</code>	L	1687, 1723,
..... 47,	<code>\l@ok</code> . 1506, 1538, 1810	1726, 1748,
339, 1939, 2022,	<code>\l@oklist</code> 751, 755,	1828, 1857, 1900
2026, 2032, 2038	943, 1086, 1107,	<code>\magic</code> <u>798</u>
<code>\ifx@cond</code> 203,	1164, 1217,	<code>\makeaindex</code> ... 14, 823
912, 1069, 1131	1227, 1285,	<code>\makesindex</code> ... 14, 829
<code>\ifx@twins</code> ... 202,	1421, 1422,	<code>\maketindex</code> ... 14, 835
915, 1066, 1115	1434, 1451,	<code>\month</code> 5, 274,
<code>\ignorespaces</code>	1550, 1561,	289, 480, 488, 2189
. 39, 277, 283,	1564, 1573,	<code>\months</code> 5, 632
584, 599, 606,	1574, 1588,	
608, 614, 618,	1590, 1646,	N
622, 626, 630,	1754, 2067, 2089	<code>\n@cnt</code> ... 61, 2111,
		2114, 2124, 2126

1327, 1333,	333, 1261, 1855,	\write@month
1334, 1400, 1420	1881, 1898,	595, 978, 980,
\topdist 100, 412	1911, 2029, 2035	982, 1325, 1327,
\tourn 798	\value 242, 396, 398,	1332, 1334, 2184
\tournament . 5, 648, 800	400, 448, 1517,	\write@piecedefs .
\tournament@tk . . .	1532, 1534, 1162, 1172
140, 649, 1024,	1544, 1546,	\write@short 1446, 1456
1203, 1346, 1404	1689, 1691–	\write@twins
\tw@ 312, 325–	1694, 1723,	. . 1085, 1089,
328, 342–345,	1725, 1793,	1118, 1134, 1182
348, 358, 370–	1794, 1798, 1799	\wX 13, 887
373, 421, 559,	\version 656	
560, 1233, 1258,	\version@tk	X
1259, 1481,	143, 657, 970,	\x 13, 575
1602, 1605,	1206, 1312, 1407	\x@condfalse . 203, 1077
1608, 1611,	\verticalcylinder	\x@condtrue 730
1650, 1654, 6, 10, 786	\x@piecedef . . 751,
1656, 1660,	W	753, 1150, 1155
1889, 1890,	\w@cnt . . . 59, 2132,	\x@pieces . . . 678, 681
2047, 2195–2198	2134, 2142, 2144	\x@sindex . . 2080, 2084
\twins 5, 736	\wC 12	\x@twinsfalse 202, 1076
\twins@tk	\wE 13, 884	\x@twinstrue 737
148, 740, 1120,	\wF . . 1724, 1726, 1748	\x@write@twin
1210, 1374, 1411	\wGh 12	. 1082, 1116, 1132
\typis@tk . . . 126, 282	\whatsnext . 1506, 1508	Y
V	\whiledo 1689,	\year 5, 275,
\v@frame@dist . 118,	1691, 1793, 1798	290, 481, 489, 2190
321, 335, 361,	\widedias 6, 819	\year@tk
1258, 2027, 2033	\wNr 12	137, 637, 985,
\v@space@dist	\write@christian .	1200, 1338, 1401
. . . . 121, 319,	. 1439, 1454, 2061	

Change History

v0.1	v0.6
General: First Version 1	General: Changed erroneous code to parse given piececount. . . . 1
v0.2	v1.10
General: Added the documentation for the <i>information collecting</i> macros which may be used inside a environment. . . . 1	General: Fixed issue: 03f/658:om: diagram.sty: evaluation of options 11pt and 12pt does not work. 1
v0.3	v1.11
General: Added list of commands which should not be indexed. . 1	General: Fixed issue 03f/e20:om: diagram.sty: piecedefs should be written after twins and before remarks. 1
v0.4	v1.5
General: Added most missing user documentation. 1	General: Added license meta-comment to publish package on ctan. 1
v0.5	
General: Fixed wrong piece count when using imitators 1	

v1.5.1	General: Fixed font problem when writing producing piece-counter in small diagrams. . . .	1	v1.6.2	General: Added boolean for all-white problems.	1
v1.5.2	General: Added some percent signs at line ends in @start@diagram and end-diagram to avoid accidentally added spaces.	1	v1.6.3	General: Added boolean for board with switched field colors. . . .	1
v1.5.3	General: Changed switch, which is used to decide, whether information about computer proof is displayed to use standard boolean syntax. Symbols about computer proof are now created by standard commands and may therefore be changed by users.	1	v1.6.4	General: Added convenience command for 'allwhite' and 'switchcolors' booleans.	1
v1.5.4	General: Defined 2 different versions of @writename command, to be able to change it in other stylefiles for the part over the diagram without influencing the one used for the solution. Added commands to set white, black and neutral Circles within text.	1	v1.6.5	General: As suggested by Torsten Linß and Thomas Brand added support for Equihopper and turned Equihopper (X) . .	1
v1.5.5	General: Changed amount of lowering figurine pieces.	1	v1.6.6	General: Introduced new command to switch to the default diagram size.	1
v1.5.6	General: Added new command 'solpar' to allow use of 'putsol' inside a window environment. .	1	v1.6.7	General: Fixed issue '19a' with all-white on quadratic fields. . . .	1
v1.6	General: Added boolean showcity and code to suppress display of city, when showcity is false. Added commands for academic titles, which allow to suppress their display.	1	v1.7.0	General: Implemented Issue '32c': the command diagram now allows to specify a prefix to be used for the following diagrams.	1
v1.6.1	General: Added new command piecedefs specify names of fairy pieces for rotated pieces. .	1	v1.8.0	General: Implemented issue '03f/f2a': Added code to display a legend around the board, controlled by the boolean 'legend'.	1
			v1.8.1	General: Implemented issue '03f/83c': changed tex boolean solafterdiagram to latex boolean.	1
			v1.9	General: Implemented issue '03f/932': Renamed boardfont to cpd@boardfont due to a naming collision with another chess package. Changed all font definitions to newcommand instead of def.	1