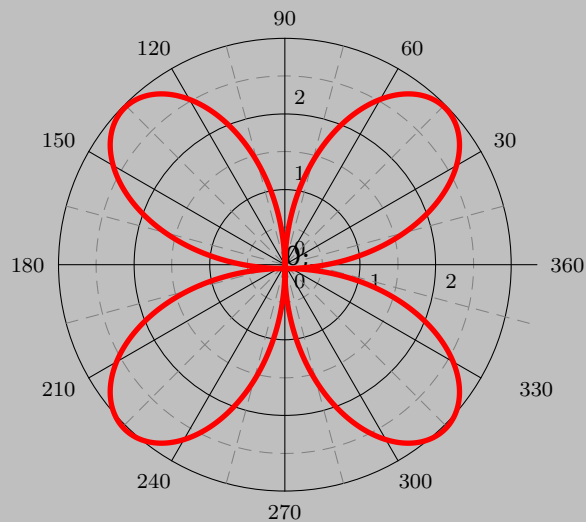


pst-plot plotting data and functions v.1.24

November 14, 2010



Documentation by
Herbert Voß

Package author(s):
Timothy Van Zandt
Herbert Voß

This version of `pst-plot` uses the extended keyval handling of `pst-xkey` and has a lot of the macros which were recently in the package `pstricks-add`. This documentation describes only the new and changed stuff. For the default behaviour look into the documentation part of the base `pstricks` package. You find the documentation here: <http://mirrors.ctan.org/graphics/pstricks/base/doc/>.

Thanks to: Stefano Baroni; Martin Chicoine; Gerry Coombes; Ulrich Dirr; Christophe Fourey; Hubert Gäßlein; Jürgen Gilg; Denis Girou; Peter Hutnick; Christophe Jorssen; Uwe Kern; Manuel Luque; Jens-Uwe Morawski; Tobias Nähring; Rolf Niepraschk; Alan Ristow; Christine Römer; Arnaud Schmittbuhl

Contents

I. Basic commands, connections and labels	5
II. New commands	9
1. Extended syntax	10
2. New Macro <code>\psBoxplot</code>	11
3. The <code>psgraph</code> environment	14
3.1. The new options for <code>nxLenvpsgraph</code>	19
4. <code>\psxTick</code> and <code>\psyTick</code>	20
5. <code>\pstScalePoints</code>	21
6. New or extended options	21
6.1. Introduction	21
6.2. Option <code>xLabels</code> , <code>yLabels</code> , <code>xLabelrot</code> , and <code>yLabelrot</code>	24
6.3. Option <code>yMaxValue</code>	24
6.4. Option <code>axesstyle</code>	26
6.5. Option <code>xyAxes</code> , <code>xAxis</code> and <code>yAxis</code>	27
6.6. Option <code>labels</code>	28
6.7. Options <code>xlabelPos</code> and <code>ylabelPos</code>	29
6.8. Options <code>labelFontSize</code> and <code>mathLabel</code>	30
6.9. Options <code>xlabelFactor</code> and <code>ylabelFactor</code>	31
6.10. Options <code>decimalSeparator</code> and <code>comma</code>	31
6.11. Options <code>xyDecimals</code> , <code>xDecimals</code> and <code>yDecimals</code>	32
6.12. Option <code>triglabels</code>	33
6.13. Option <code>ticks</code>	40
6.14. Option <code>tickstyle</code>	41
6.15. Options <code>ticksize</code> , <code>xticksize</code> , <code>yticksize</code>	41
6.16. Options <code>subticks</code> , <code>xsubticks</code> , and <code>ysubticks</code>	43
6.17. Options <code>subticksize</code> , <code>xsubticksize</code> , <code>ysubticksize</code>	43
6.18. <code>tickcolor</code> and <code>subtickcolor</code>	44
6.19. <code>ticklinestyle</code> and <code>subticklinestyle</code>	45
6.20. <code>logLines</code>	45
6.21. <code>xylogBase</code> , <code>xlogBase</code> and <code>ylogBase</code>	47
6.22. <code>xylogBase</code>	47
6.23. <code>ylogBase</code>	48
6.24. <code>xlogBase</code>	50
6.25. No logstyle (<code>xylogBase={}</code>)	51
6.26. Option <code>tickwidth</code> and <code>subtickwidth</code>	52

7. New options for \readdata	56
8. New options for \listplot	57
8.1. Options nStep, xStep, and yStep	57
8.2. Options nStart and xStart	60
8.3. Options nEnd and xEnd	61
8.4. Options yStart and yEnd	62
8.5. Options plotNo, plotNoX, and plotNoMax	62
8.6. Option changeOrder	65
9. New plot styles	66
9.1. Plot style colordot and option Hue	66
9.2. Plot style bar and option barwidth	67
9.3. Plot style ybar	68
9.4. Plotstyle LSM	69
9.5. Plotstyles values and values*	72
9.6. Plotstyles xvalues and xvalues*	73
10 Polar plots	74
11 List of all optional arguments for pst-plot	76
References	79

Part I.

Basic commands, connections and labels

gridlabels=*dim* **Default: 10pt**

The size of the numbers used to mark the grid.

gridlabelcolor=*color* **Default: black**

The color of the grid numbers.

subgriddiv=*int* **Default: 5**

The number of grid subdivisions.

subgridwidth=*dim* **Default: .4pt**

The width of subgrid lines.

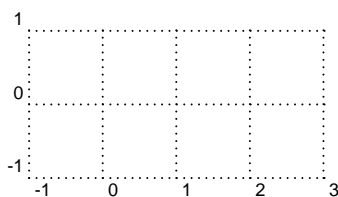
subgridcolor=*color* **Default: gray**

The color of subgrid lines.

subgriddots=*num* **Default: 0**

Like **griddots**, but for subdivisions.

Here is a familiar looking grid which illustrates some of the parameters:



```
1 \psgrid[subgriddiv=1,griddots=10,gridlabels=7pt](-1,-1)(3,1)
```

Note that the values of **xunit** and **yunit** are important parameters for **\psgrid**, because they determine the spacing of the divisions. E.g., if the value of these is 1pt, and then you type

```
1 \psgrid(0,0)(10in,10in)
```

you will get a grid with 723 main divisions and 3615 subdivisions! (Actually, **\psgrid** allows at most 500 divisions or subdivisions, to limit the damage done by this kind of mistake.) Probably you want to set **unit** to .5in or 1in, as in

```
1 \psgrid[unit=.5in](0,0)(20,20)
```

11 Plots



The plotting commands described in this part are defined in `pst-plot.tex` / `pst-plot.sty`, which you must load first (for various simple and more elaborated examples, you can refer to the two articles published by Herbert Voß

and Laura E. Jackson in *Die TeXnische Komödie* in 2002 [33] and [81] (in German)).⁵

The `\psdots`, `\psline`, `\pspolygon`, `\pscurve`, `\psecurve` and `\psccurve` graphics objects let you plot data in a variety of ways. However, first you have to generate the data and enter it as coordinate pairs (x,y) . The plotting macros in this section give you other ways to get and use the data. (Section 26 tells you how to generate axes.)

To parameter

plotstyle=style

Default: line

determines what kind of plot you get. Valid styles are dots, line, polygon, curve, ecurve, ccurve. E.g., if the **plotstyle** is polygon, then the macro becomes a variant of the `\pspolygon` object.

You can use arrows with the plot styles that are open curves, but there is no optional argument for specifying the arrows. You have to use the **arrows** parameter instead.



Warning: No PostScript error checking is provided for the data arguments. Read Appendix L.4 before including PostScript code in the arguments.

There are system-dependent limits on the amount of data T_EX and PostScript can handle. You are much less likely to exceed the PostScript limits when you use the line, polygon or dots plot style, with **showpoints=false**, **linearc=0pt**, and no arrows.

Note that the lists of data generated or used by the plot commands cannot contain units. The values of `\psxunit` and `\psyunit` are used as the unit.

\fileplot*[par]{file}

\fileplot is the simplest of the plotting functions to use. You just need a file that contains a list of coordinates (without units), such as generated by Mathematica or other mathematical packages. The data can be delimited by curly braces { }, parentheses (), commas, and/or white space. Bracketing all the data with square brackets [] will significantly speed up the rate at which the data is read, but there are system-dependent limits on how much data T_EX can read like this in one chunk. (The [*must* go at the beginning of a line.) The file should not contain anything else (not even `\endinput`), except for comments marked with %.

⁵For plotting commands in three dimensions, see the ‘pst-3dplot’ contribution package [54] from Herbert Voß.

\fileplot only recognizes the line, polygon and dots plot styles, and it ignores the **arrows**, **lineararc** and **showpoints** parameters. The **\listplot** command, described below, can also plot data from file, without these restrictions and with faster T_EX processing. However, you are less likely to exceed PostScript's memory or operand stack limits with **\fileplot**.

If you find that it takes T_EX a long time to process your **\fileplot** command, you may want to use the **\PSTtoEPS** command described on page 160. This will also reduce T_EX's memory requirements.

\dataplot*[*par*]{*commands*}

\dataplot is also for plotting lists of data generated by other programs, but you first have to retrieve the data with one of the following commands:

\savedata{*command*}[*data*]
\readdata{*command*}{*file*}

data or the data in *file* should conform to the rules described above for the data in **\fileplot** (with **\savedata**, the data must be delimited by [], and with **\readdata**, bracketing the data with [] speeds things up). You can concatenate and reuse lists, as in

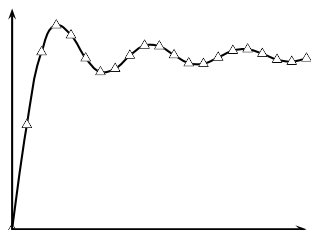
```
1 \readdata{\foo}{foo.data}
2 \readdata{\bar}{bar.data}
3 \dataplot{\foo\bar}
4 \dataplot[origin={0,1}]{\bar}
```

The **\readdata** and **\dataplot** combination is faster than **\fileplot** if you reuse the data. **\fileplot** uses less of T_EX's memory than **\readdata** and **\dataplot** if you are also use **\PSTtoEPS**.

Here is a plot of Integral(sin(x)). The data was generated by Mathematica, with

```
1 Table[{x,N[SinIntegral[x]]},{x,0,20}]
```

and then copied to this document.



```
1 \psset{xunit=.2cm,yunit=1.5cm}
2 \savedata{\mydata}[
3   {{0, 0}, {1., 0.946083}, {2., 1.60541}, {3., 1.84865}, {4., 1.7582},
4   {5., 1.54993}, {6., 1.42469}, {7., 1.4546}, {8., 1.57419},
5   {9., 1.66504}, {10., 1.65835}, {11., 1.57831}, {12., 1.50497},
6   {13., 1.49936}, {14., 1.55621}, {15., 1.61819}, {16., 1.6313},
7   {17., 1.59014}, {18., 1.53661}, {19., 1.51863}, {20., 1.54824}}]
8 \dataplot[plotstyle=curve,showpoints=true,
9   dotstyle=triangle]{\mydata}
10 \psline{<->}(0,2)(0,0)(20,0)
```


\listplot*[*par*]{*list*}

\listplot is yet another way of plotting lists of data. This time, *list* should be a list of data (coordinate pairs), delimited only by white space. *list* is first expanded by T_EX and then by PostScript. This means that *list* might be a PostScript program that leaves on the stack a list of data, but you can also include data that has been retrieved with **\readdata** and **\dataplot**. However, when using the line, polygon or dots plotstyles with **showpoints=false**, **linearc=0pt** and no arrows, **\dataplot** is much less likely than **\listplot** to exceed PostScript's memory or stack limits. In the preceding example, these restrictions were not satisfied, and so the example is equivalent to when **\listplot** is used:

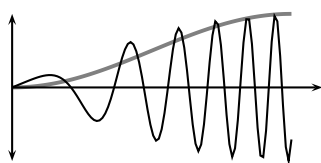
```
1 ...
2 \listplot[plotstyle=curve,showpoints=true,
3   dotstyle=triangle]{\mydata}
4 ...
```

\psplot*[*par*]{*x*_{min}}{*x*_{max}}{*function*}

\psplot can be used to plot a function $f(x)$, if you know a little PostScript. *function* should be the PostScript code for calculating $f(x)$. Note that you must use x as the dependent variable. PostScript is not designed for scientific computation, but **\psplot** is good for graphing simple functions right from within T_EX. E.g.,

```
1 \psplot[plotpoints=200]{0}{720}{x sin}
```

plots $\sin(x)$ from 0 to 720 degrees, by calculating $\sin(x)$ roughly every 3.6 degrees and then connecting the points with **\psline**. Here are plots of $\sin(x) \cos((x/2)^2)$ and $\sin^2(x)$:

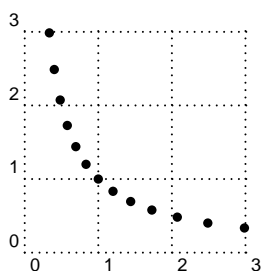


```
1 \psset{xunit=1.2pt}
2 \psplot[linecolor=gray,linewidth=1.5pt,plotstyle=curve]%
3   {0}{90}{x sin dup mul}
4 \psplot[plotpoints=100]{0}{90}{x sin x 2 div 2 exp cos mul}
5 \psline{<->}(0,-1)(0,1)
6 \psline{->}(100,0)
```

\parametricplot*[*par*]{*t*_{min}}{*t*_{max}}{*function*}

This is for a parametric plot of $(x(t), y(t))$. *function* is the PostScript code for calculating the pair $x(t) y(t)$.

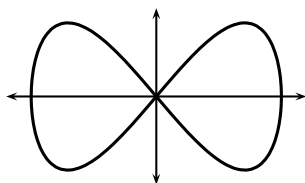
For example,



```
1 \parametricplot[plotstyle=dots,plotpoints=13]%
2 {-6}{6}{1.2 t exp 1.2 t neg exp}
```

plots 13 points from the hyperbola $xy = 1$, starting with $(1.2^{-6}, 1.2^6)$ and ending with $(1.2^6, 1.2^{-6})$.

Here is a parametric plot of $(\sin(t), \sin(2t))$:



```
1 \psset{xunit=1.7cm}
2 \parametricplot[linewidth=1.2pt,plotstyle=ccurve]%
3 {0}{360}{t sin t 2 mul sin}
4 \psline{<->}(0,-1.2)(0,1.2)
5 \psline{<->}(-1.2,0)(1.2,0)
```

The number of points that the `\psplot` and `\parametricplot` commands calculate is set by the

plotpoints=*int*

Default: 50

parameter. Using `curve` or its variants instead of `line` and increasing the value of **plotpoints** are two ways to get a smoother curve. Both ways increase the imaging time. Which is better depends on the complexity of the computation. (Note that all PostScript lines are ultimately rendered as a series (perhaps short) line segments.) Mathematica generally uses `lineto` to connect the points in its plots. The default minimum number of plot points for Mathematica is 25, but unlike `\psplot` and `\parametricplot`, Mathematica increases the sampling frequency on sections of the curve with greater fluctuation.

Part II.

New commands

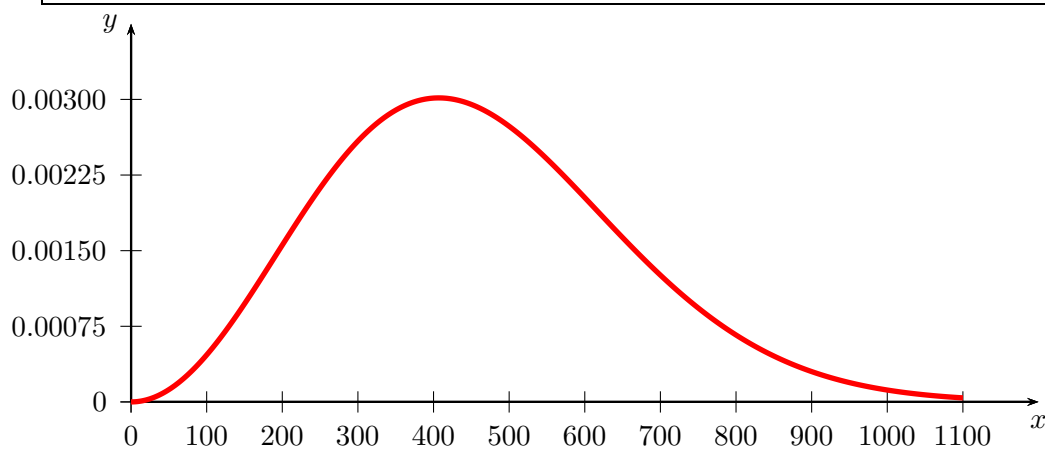
1. Extended syntax for `\psplot`, `\psparametricplot`, and `\psaxes`

There is now a new optional argument for `\psplot` and `\psparametricplot` to pass additional PostScript commands into the code. This makes the use of `\pstVerb` in most cases superfluous.

```
\psplot [Options] {x0}{x1} [PS commands] {function}
\psparametricplot [Options] {t0}{t1} [PS commands] {x(t) y(t)}
\psaxes [Options] {arrows} (x0,y0)(x1,y1)(x2,y2) [Xlabel,Xangle] [Ylabel,Yangle]
```

The macro `\psaxes` has now four optional arguments, one for the setting, one for the arrows, one for the x-label and one for the y-label. If you want only a y-label, then leave the x one empty. A missing y-label is possible. The following examples show how it can be used.

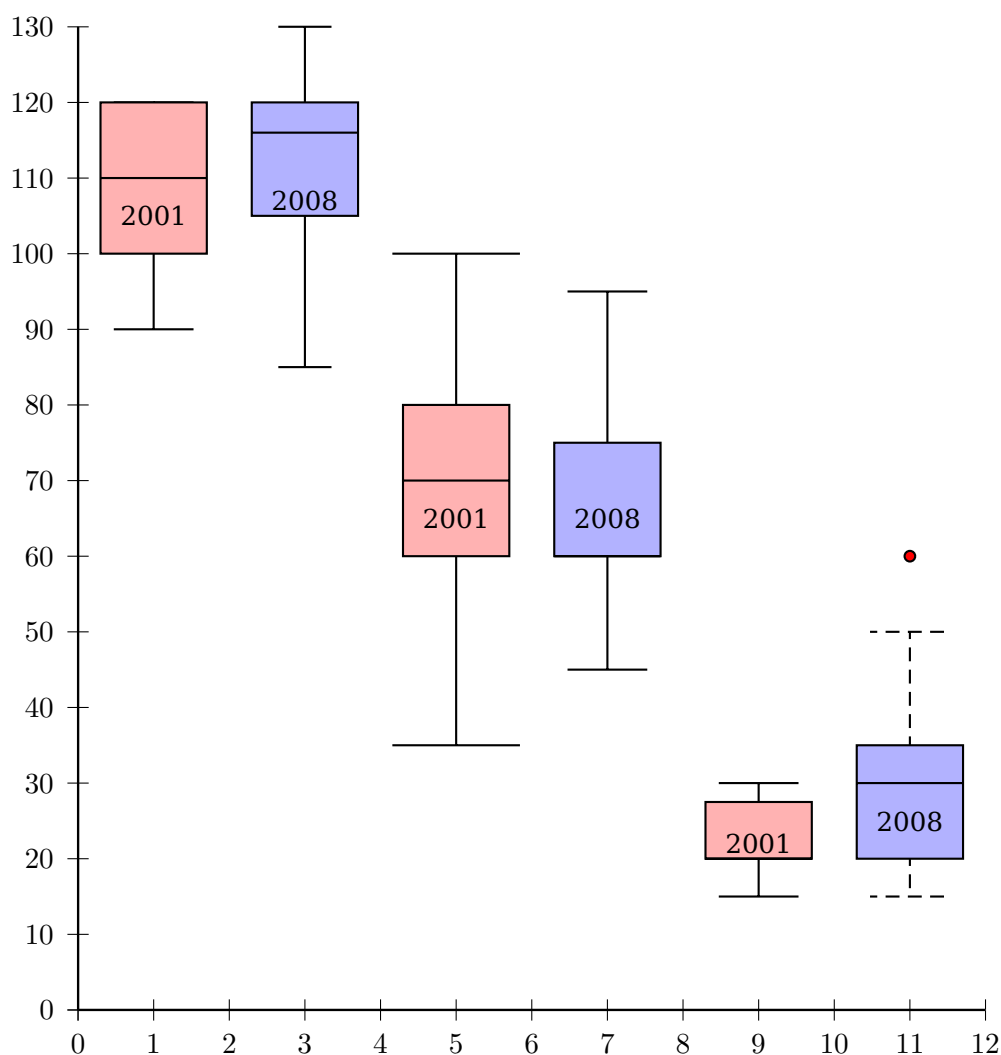
```
1 \begin{pspicture}(-1,-0.5)(12,5)
2   \psaxes[Dx=100,dx=1,Dy=0.00075,dy=1]{->}(0,0)(12,5)[$x$,-90][$y$,180]
3   \psplot[linecolor=red, plotstyle=curve,linewidth=2pt,plotpoints=200]{0}{11}%
4     [ /const1 3.3 10 8 neg exp mul def
5       /s 10 def
6       /const2 6.04 10 6 neg exp mul def ] % optional PS commands
7     { const1 x 100 mul dup mul Euler const2 neg x 100 mul dup mul mul exp
8       mul 2000 mul }
9 \end{pspicture}
```



2. New Macro \psBoxplot

A box-and-whisker plot (often called simply a box plot) is a histogram-like method of displaying data, invented by John Tukey. The box-and-whisker plot is a box with ends at the quartiles Q_1 and Q_3 and has a statistical median M as a horizontal line in the box. The "whiskers" are lines to the farthest points that are not outliers (i.e., that are within $3/2$ times the interquartile range of Q_1 and Q_3). Then, for every point more than $3/2$ times the interquartile range from the end of a box, is a dot.

The only special optional arguments, beside all other which are valid for drawing lines and filling areas, are `IQLfactor`, `barwidth`, and `arrowlength`, where the latter is a factor which is multiplied with the barwidth for the line ends. The `IQLfactor`, preset to 1.5, defines the area for the outliers.



```

1 \begin{pspicture}(-1,-1)(12,14)
2 \psset{yunit=0.1,fillstyle=solid}
3 \savedata{\data}[100 90 120 115 120 110 100 110 100 90 100 100 120 120 120]
4 \rput(1,0){\psBoxplot[fillcolor=red!30]{\data}}

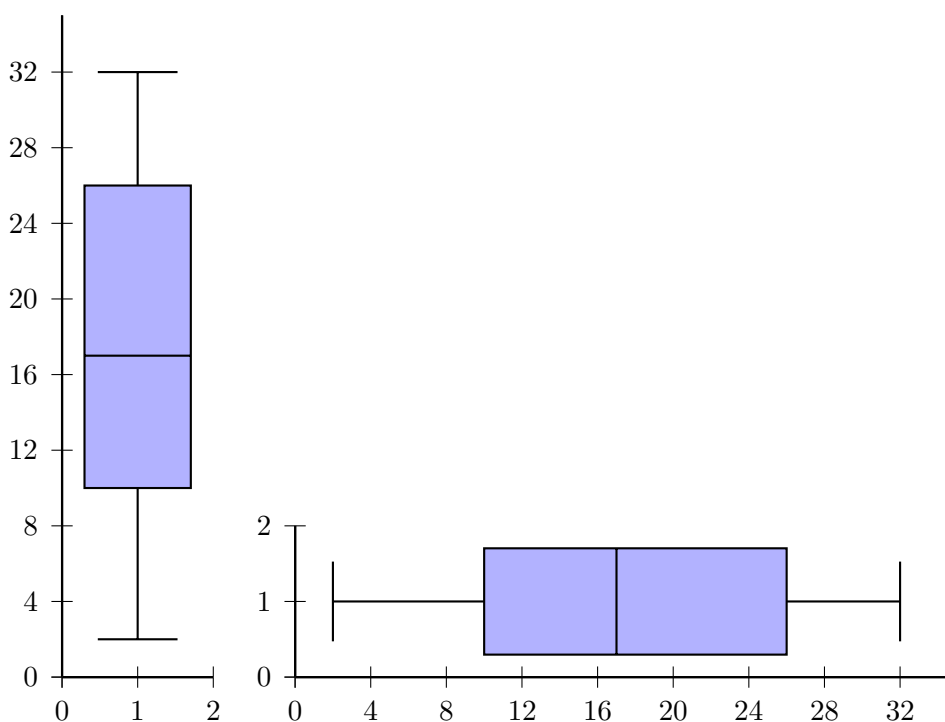
```

```

5 \rput(1,105){2001}
6 \savedata{\data}[90 120 115 116 115 110 90 130 120 120 120 85 100 130 130]
7 \rput(3,0){\psBoxplot[arrowlength=0.5,fillcolor=blue!30]{\data}}
8 \rput(3,107){2008}
9 \savedata{\data}[35 70 90 60 100 60 60 80 80 60 50 55 90 70 70]
10 \rput(5,0){\psBoxplot[barwidth=40pt,arrowlength=1.2,fillcolor=red!30]{\data}}
11 \rput(5,65){2001}
12 \savedata{\data}[60 65 60 75 75 60 50 90 95 60 65 45 45 60 90]
13 \rput(7,0){\psBoxplot[barwidth=40pt,fillcolor=blue!30]{\data}}
14 \rput(7,65){2008}
15 \savedata{\data}[20 20 25 20 15 20 20 25 30 20 20 20 30 30 30]
16 \rput(9,0){\psBoxplot[fillcolor=red!30]{\data}}
17 \rput(9,22){2001}
18 \savedata{\data}[20 30 20 35 35 20 20 60 50 20 35 15 30 20 40]
19 \rput(11,0){\psBoxplot[fillcolor=blue!30,linestyle=dashed]{\data}}
20 \rput(11,25){2008}
21 \psaxes[dy=1cm,Dy=10](0,0)(12,130)
22 \end{pspicture}

```

The next example uses an external file for the data, which must first be read by the macro `\readdata`. The next one creates a horizontal boxplot by rotating the output with -90 degrees.



```

1 \readdata{\data}{boxplot.data}
2 \begin{pspicture}(-1,-1)(2,10)
3 \psset{yunit=0.25,fillstyle=solid}
4 \savedata{\data}[2 4 6 8 10 12 14 16 18 20 22 24 26 28 30 32]

```

```
5 \rput(1,0){\psBoxplot[fillcolor=blue!30]{\data}}
6 \psaxes[dy=1cm,Dy=4](0,0)(2,35)
7 \end{pspicture}
8 %
9 \begin{pspicture}(-1,-1)(11,2)
10 \psset{xunit=0.25,fillstyle=solid}
11 \savedata{\data}[2 4 6 8 10 12 14 16 18 20 22 24 26 28 30 32]
12 \rput{-90}(0,1){\psBoxplot[yunit=0.25,fillcolor=blue!30]{\data}}
13 \psaxes[dx=1cm,Dx=4](0,0)(35,2)
14 \end{pspicture}
```

3. The psgraph environment

This new environment `psgraph` does the scaling, it expects as parameter the values (without units!) for the coordinate system and the values of the physical width and height (with units!). The syntax is:

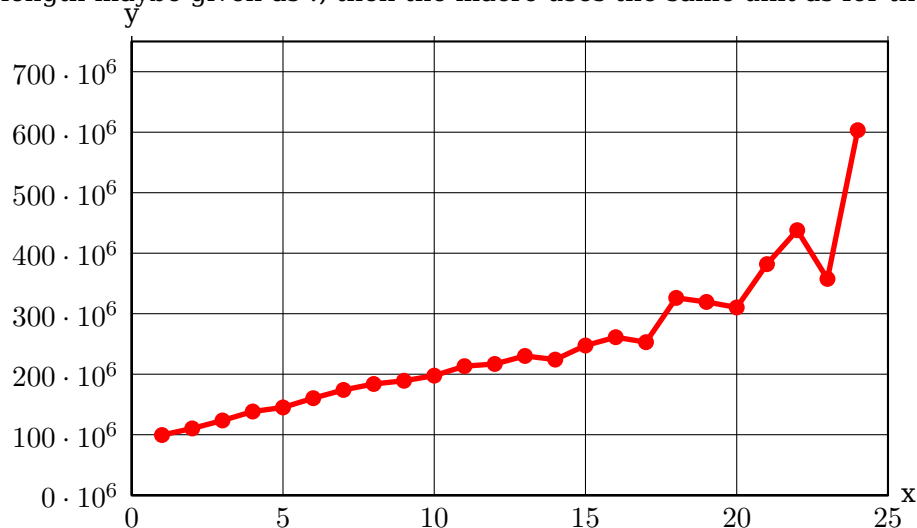
```
\psgraph [Options] {<arrows>}%
  (xOrig,yOrig) (xMin,yMin) (xMax,yMax) {xLength}{yLength}
...
\endpsgraph

\begin{psgraph} [Options] {<arrows>}%
  (xOrig,yOrig) (xMin,yMin) (xMax,yMax) {xLength}{yLength}
...
\end{psgraph}
```

where the options are valid **only** for the the `\psaxes` macro. The first two arguments have the usual PSTricks behaviour.

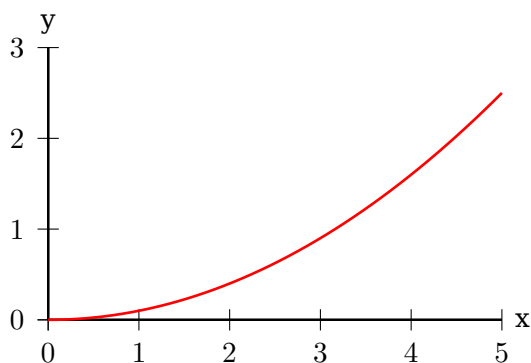
- if $(xOrig, yOrig)$ is missing, it is substituted to $(xMin, xMax)$;
- if $(xOrig, yOrig)$ **and** $(xMin, yMin)$ are missing, they are both substituted to $(0, 0)$.

The y-length maybe given as !; then the macro uses the same unit as for the x-axis.



```
1 \readdata{\data}{demo1.data}
2 \pstScalePoints(1,0.000001){}% (x,y){additional x operator}{y op}
3 \psset{llx=-1cm, lly=-1cm}
4 \begin{psgraph}[axesstyle=frame,xticks=0 759,yticks=0 25,%
5   subticks=0,ylabelFactor=\cdot 10^6,
6   Dx=5,Dy=100\psunit,Dy=100](0,0)(25,750){10cm}{6cm} % parameters
7   \listplot[linecolor=red,linewidth=2pt,showpoints=true]{\data}
8 \end{psgraph}
```

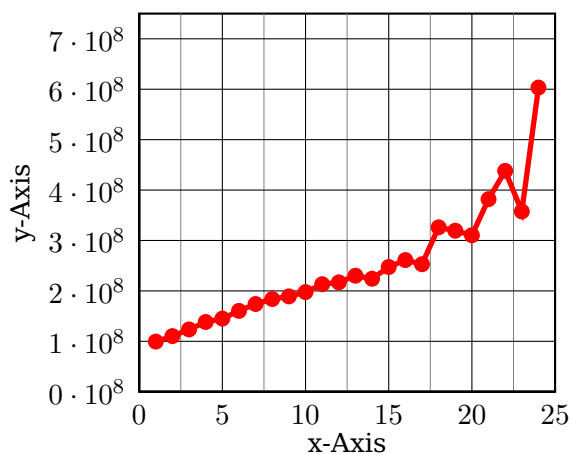
In the following example, the y unit gets the same value as the one for the x-axis.



```

1 \psset{llx=-1cm, lly=-0.5cm, ury=0.5cm}
2 \begin{psgraph}(0,0)(5,3){6cm}{!} % x-y-axis with same unit
3   \psplot[linecolor=red,linewidth=1pt]{0}{5}{x dup mul 10 div}
4 \end{psgraph}

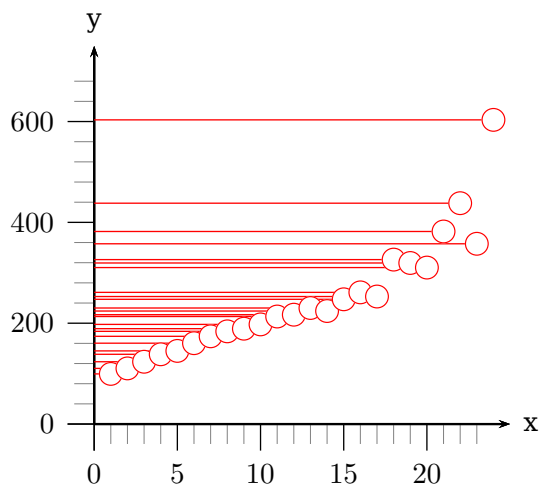
```



```

1 \readdata{\data}{demo1.data}
2 \psset{xAxisLabel=x-Axis,yAxisLabel=y-Axis,llx=-.5cm,lly=-1cm,ury=0.5cm,
3   xAxisLabelPos={c,-1},yAxisLabelPos={-7,c}}
4 \pstScalePoints(1,0.00000001){}{}
5 \begin{psgraph}[axesstyle=frame,xticks=0 7.5,yticks=0 25,subticks=1,
6   ylabelFactor=\cdot 10^8,Dx=5,Dy=1,xsubticks=2](0,0)(25,7.5){5.5cm}{5cm}
7   \listplot[linecolor=red,linewidth=2pt,showpoints=true]{\data}
8 \end{psgraph}

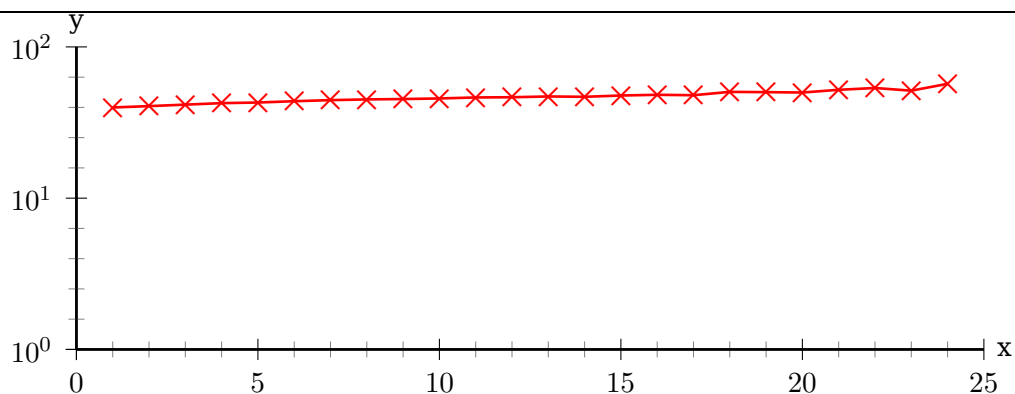
```



```

1 \readdata{\data}{demo1.data}
2 \psset{llx=-0.5cm,lly=-1cm}
3 \pstScalePoints(1,0.000001){}{\}
4 \psgraph[arrows=->,Dx=5,dy=200\psyunit,Dy=200,subticks=5,ticks=-10pt 0,
5   tickwidth=0.5pt,subtickwidth=0.1pt](0,0)(25,750){5.5cm}{5cm}
6 \listplot[linecolor=red,linewidth=0.5pt,showpoints=true,dotscale=3,
7   plotstyle=LineToYAxis,dotstyle=o]{\data}
8 \endpsgraph

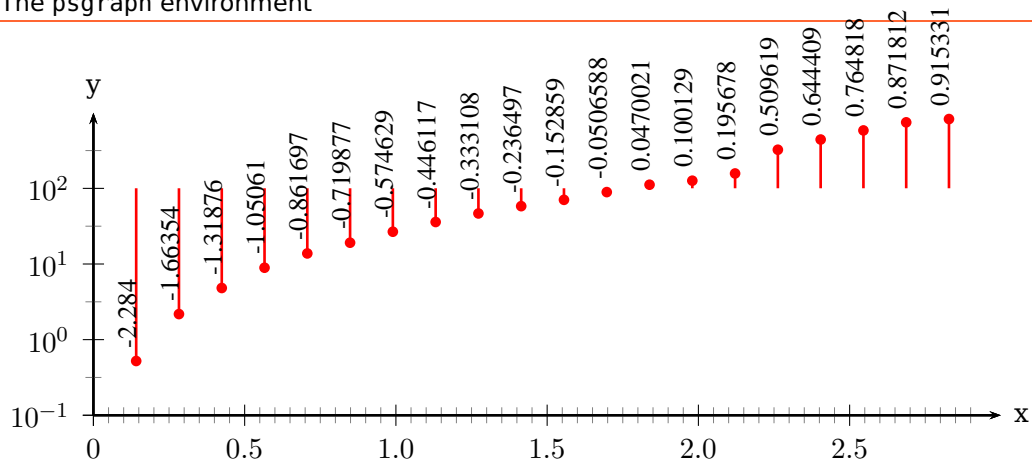
```



```

1 \readdata{\data}{demo1.data}
2 \pstScalePoints(1,0.2){}{\log}
3 \psset{lly=-0.75cm}
4 \psgraph[ylogBase=10,Dx=5,Dy=1,subticks=5](0,0)(25,2){12cm}{4cm}
5 \listplot[linecolor=red,linewidth=1pt,showpoints,dotstyle=x,dotscale=2]{\data}
6 \endpsgraph

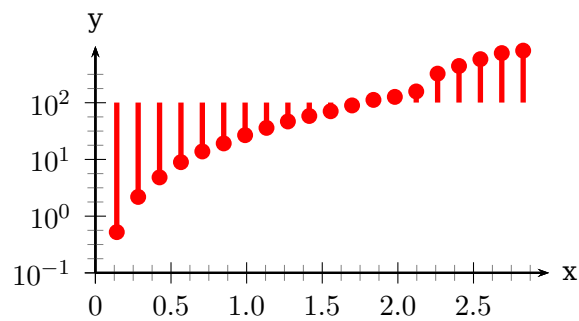
```



```

1 \readdata{\data}{demo0.data}
2 \psset{lly=-0.75cm,ury=0.5cm}
3 \pstScalePoints(1,1){}{log}
4 \begin{psgraph}[arrows=->,Dx=0.5,ylogBase=10,0y=-1,xsubticks=10,%
5   ysubticks=2](0,-3)(3,1){12cm}{4cm}
6   \psset{0y=-2}% must be global
7   \listplot[linecolor=red,linewidth=1pt,showpoints=true,
8     plotstyle=LineToXAxis]{\data}
9   \listplot[plotstyle=values,rot=90]{\data}
10 \end{psgraph}

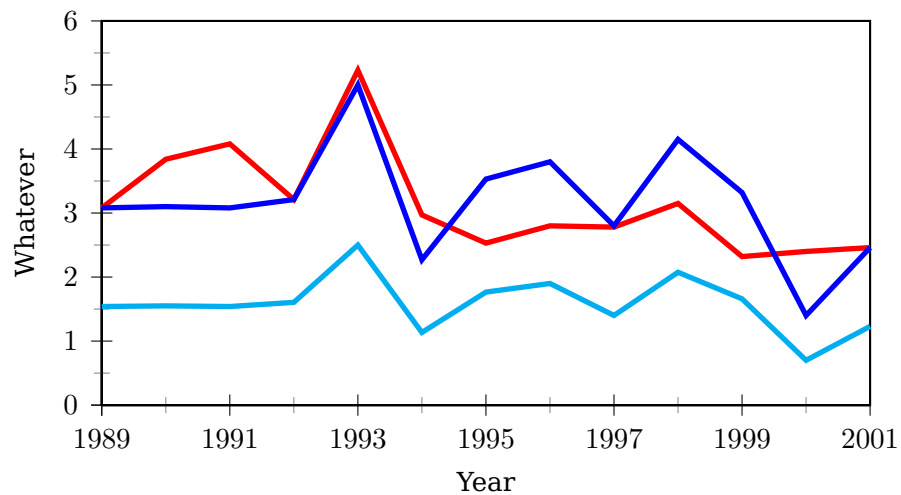
```



```

1 \psset{lly=-0.75cm,ury=0.5cm}
2 \readdata{\data}{demo0.data}
3 \pstScalePoints(1,1){}{log}
4 \psgraph[arrows=->,Dx=0.5,ylogBase=10,0y=-1,subticks=4](0,-3)(3,1){6cm}{3cm}
5   \listplot[linecolor=red,linewidth=2pt,showpoints=true,plotstyle=LineToXAxis
6     ]{\data}
6 \endpsgraph

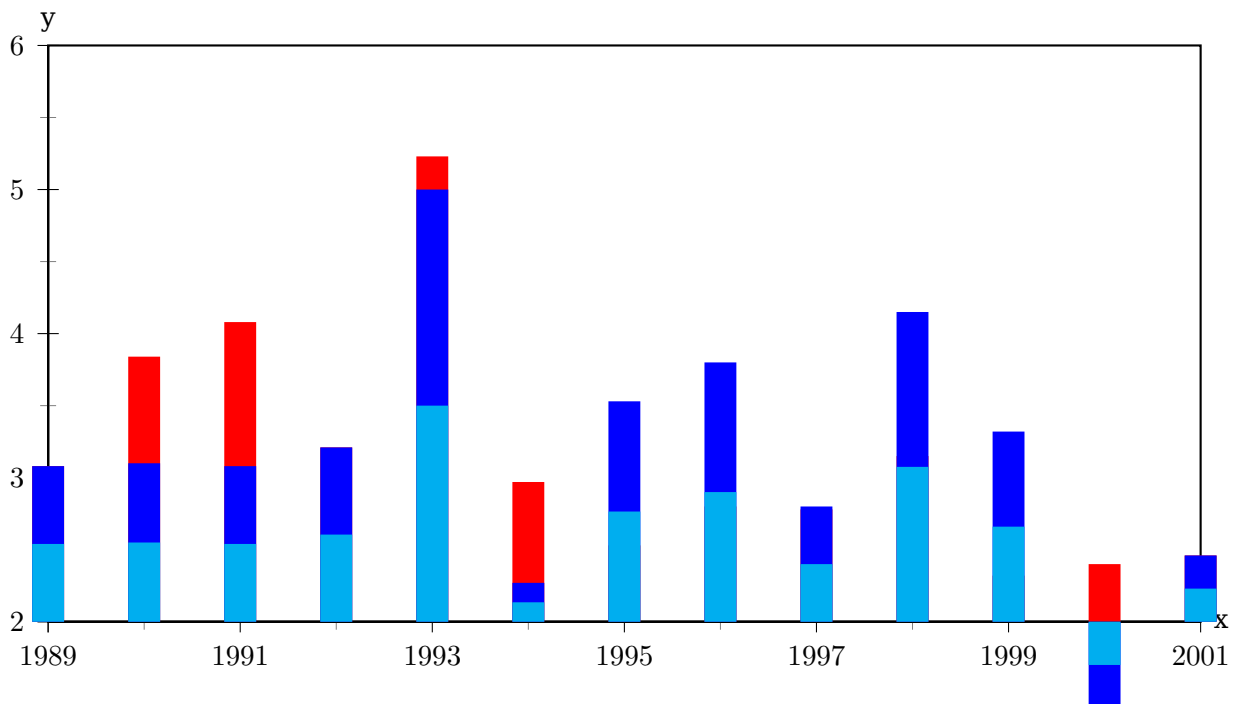
```



```

1 \readdata{\data}{demo2.data}%
2 \readdata{\dataII}{demo3.data}%
3 \pstScalePoints(1,1){1989 sub}{}
4 \psset{llx=-0.5cm,lly=-1cm, xAxisLabel=Year,yAxisLabel=Whatever,%
5     xAxisLabelPos={c,-0.4in},yAxisLabelPos={-0.4in,c}}
6 \psgraph[axesstyle=frame,Dx=2,Ox=1989,subticks=2](0,0)(12,6){4in}{2in}%
7 \listplot[linecolor=red,linewidth=2pt]{\data}
8 \listplot[linecolor=blue,linewidth=2pt]{\dataII}
9 \listplot[linecolor=cyan,linewidth=2pt,yunit=0.5]{\dataII}
10 \endpsgraph

```



```

1 \readdata{\data}{demo2.data}%
2 \readdata{\dataII}{demo3.data}%
3 \psset{llx=-0.5cm,lly=-0.75cm,plotstyle=LineToXAxis}

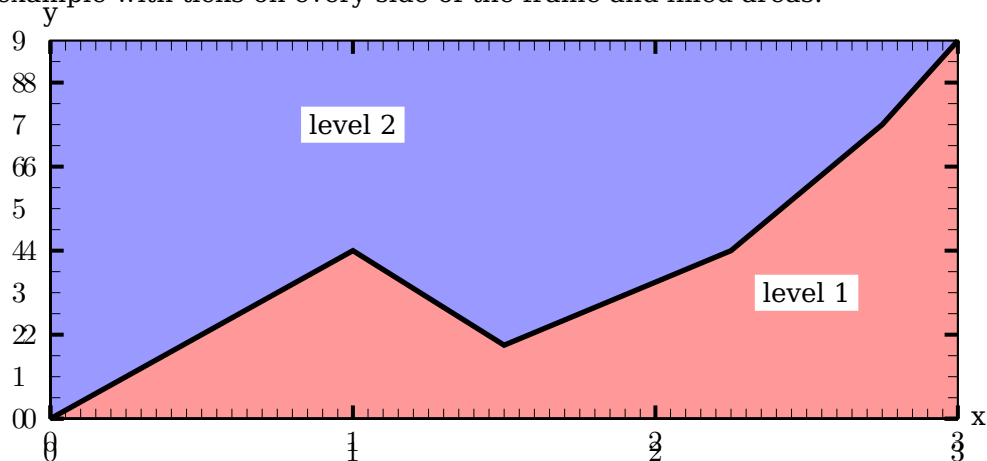
```

```

4 \pstScalePoints(1,1){1989 sub}{2 sub}
5 \begin{psgraph}[axesstyle=frame,Dx=2,0x=1989,0y=2,subticks=2](0,0)(12,4){6in}{3
  in}
6 \listplot[linecolor=red,linewidth=12pt]{\data}
7 \listplot[linecolor=blue,linewidth=12pt]{\dataII}
8 \listplot[linecolor=cyan,linewidth=12pt,yunit=0.5]{\dataII}
9 \end{psgraph}

```

An example with ticks on every side of the frame and filled areas:



```

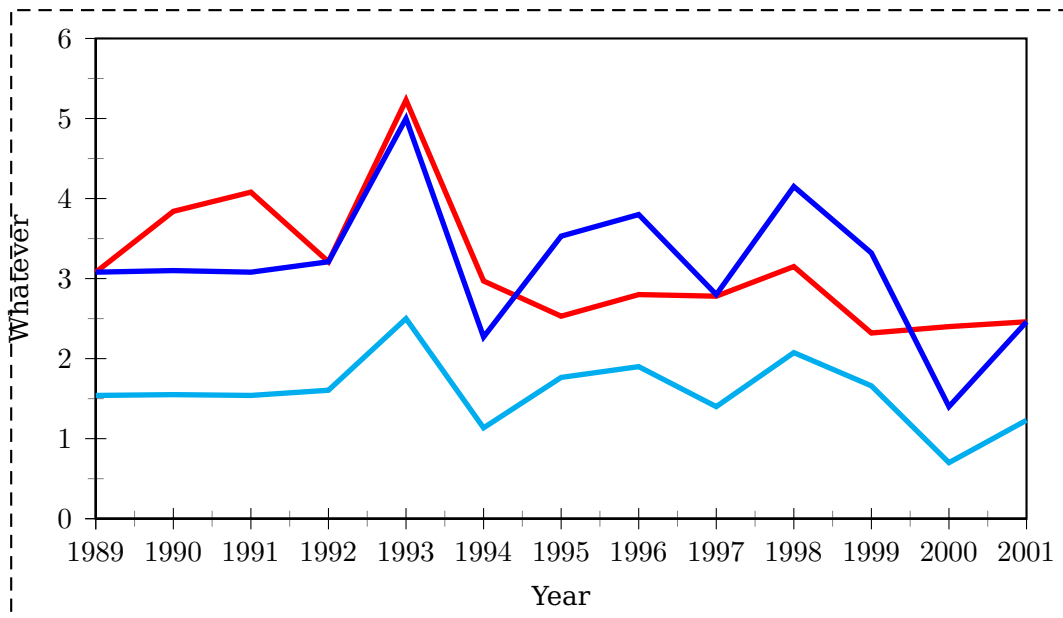
1 \def\data{0 0 1 4 1.5 1.75 2.25 4 2.75 7 3 9}
2 \psset{lly=-0.5cm}
3 \begin{psgraph}[axesstyle=none,ticks=none](0,0)(3.0,9.0){12cm}{5cm}
4 \pscustom[fillstyle=solid,fillcolor=red!40,linestyle=none]{%
5 \listplot{\data}
6 \psline(3,9)(3,0)}
7 \pscustom[fillstyle=solid,fillcolor=blue!40,linestyle=none]{%
8 \listplot{\data}
9 \psline(3,9)(0,9)}
10 \listplot[linewidth=2pt]{\data}
11 \psaxes[axesstyle=frame,ticksize=0 5pt,xsubticks=20,ysubticks=4,
12 tickstyle=inner,dy=2,Dy=2,tickwidth=1.5pt,subtickcolor=black](0,0)(3,9)
13 \rput*(2.5,3){level 1}\rput*(1,7){level 2}
14 \end{psgraph}

```

3.1. The new options for nxLenvpsgraph

name	default	meaning
xAxisLabel	x	label for the x-axis
yAxisLabel	y	label for the y-axis
xAxisLabelPos	{}	where to put the x-label
yAxisLabelPos	{}	where to put the y-label
llx	0pt	trim for the lower left x
lly	0pt	trim for the lower left y
urx	0pt	trim for the upper right x
ury	0pt	trim for the upper right y

There is one restriction in using the trim parameters, they must be set **before** `\psgraph` is called. They are redundant when used as parameters of `\psgraph` itself. The `xAxisLabelPos` and `yAxisLabelPos` options can use the letter `c` for centering an x -axis or y -axis label. The `c` is a replacement for the x or y value. When using values with units, the position is always measured from the origin of the coordinate system, which can be outside of the visible `pspicture` environment.



```

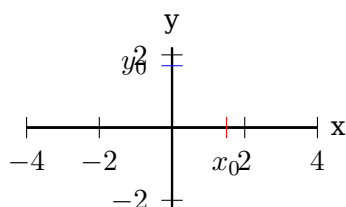
1 \readdata{\data}{demo2.data}%
2 \readdata{\dataII}{demo3.data}%
3 \psset{llx=-1cm, lly=-1.25cm, urx=0.5cm, ury=0.1in, xAxisLabel=Year, %
4   yAxisLabel=Whatever, xAxisLabelPos={c, -0.4in}, %
5   yAxisLabelPos={-0.4in, c}}
6 \pstScalePoints(1,1){1989 sub}{}
7 \psframebox[linestyle=dashed, boxsep=false]{}
8 \begin{psgraph}[axesstyle=frame, 0x=1989, subticks=2](0,0)(12,6){0.8\linewidth
9   }{2.5in}%
10 \listplot[linecolor=red, linewidth=2pt]{\data}%
11 \listplot[linecolor=blue, linewidth=2pt]{\dataII}%
12 \listplot[linecolor=cyan, linewidth=2pt, yunit=0.5]{\dataII}%
13 \end{psgraph}%

```

4. \psxTick and \psyTick

Single ticks with labels on an axis can be set with the two macros `\psxTick` and `\psyTick`. The label is set with the macro `\pshlabel`, the setting of `mathLabel` is taken into account.

<code>\psxTick</code>	<code>[Options]</code>	<code>[x value]</code>	<code>{label}</code>
<code>\psyTick</code>	<code>[Options]</code>	<code>[y value]</code>	<code>{label}</code>



```

1 \begin{psgraph}[Dx=2,Dy=2](0,0)
   (-4,-2.2)(4,2.2){.5\textwidth}{!}
2 \psxTick[linecolor=red](1.5){x_0}
3 \psyTick[linecolor=blue](1.7){y_0}
4 \end{psgraph}

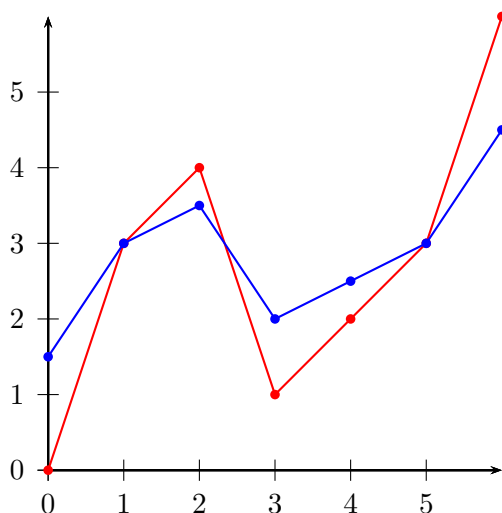
```

5. \pstScalePoints

The syntax is

```
\pstScalePoints(xScale,xScale){xPS}{yPS}
```

$xScale, yScale$ are decimal values used as scaling factors, the xPS and yPS are additional PostScript code applied to the x - and y -values of the data records. This macro is only valid for the `\listplot` macro!



```

1 \def\data{%
2   0 0 1 3 2 4 3 1
3   4 2 5 3 6 6 }
4 \begin{pspicture}(-0.5,-1)(6,6)
5   \psaxes{->}(0,0)(6,6)
6   \listplot[showpoints=true,%
7     linecolor=red]{\data}
8   \pstScalePoints(1,0.5){}{3 add}
9   \listplot[showpoints=true,%
10    linecolor=blue]{\data}
11 \end{pspicture}

```

`\pstScalePoints(1,0.5){}{3 add}` means that **first** the value 3 is added to the y values and **second** this value is scaled with the factor 0.5. As seen for the blue line for $x = 0$ we get $y(0) = (0 + 3) \cdot 0.5 = 1.5$.

Changes with `\pstScalePoints` are always global to all following `\listplot` macros. This is the reason why it is a good idea to reset the values at the end of the `pspicture` environment.

6. New or extended options

6.1. Introduction

The option `tickstyle=full |top|bottom` no longer works in the usual way. Only the additional value `inner` is valid for `pst-plot`, because everything can be set by the `ticksize` option. When using the `comma` or `trigLabels` option, the macros `\pshlabel` and `\psvlabel` shouldn't be redefined, because the package does it itself internally in these cases. However, if you need a redefinition, then do it for `\pst@@hlabel` and `\pst@@vlabel` with

```

\makeatletter
\def\ps@@@hlabel#1{...}
\def\ps@@@vlabel#1{...}
\makeatother

```

Table 1: All new parameters for pst-plot

<i>name</i>	<i>type</i>	<i>default</i>	<i>page</i>
axesstyle	none axes frame polar inner	axes	26
barwidth	length	0.25cm	67
ChangeOrder	boolean	false	65
comma	boolean	false	31
decimals	integer	-1 ¹	72
decimalSeparator	char	.	31
fontscale	real	10	72
ignoreLines	integer	0	56
labelFontSize	macro	{}	30
labels	all x y none	all	28
llx	length	0pt	19
lly	length	0pt	19
logLines	none x y all	none	45
mathLabel	boolean	false	30
nEnd	integer or empty	{}	61
nStart	integer	0	60
nStep	integer	1	57
plotNo	integer	1	62
plotNoMax	integer	1	62
polarplot	boolean	false	74
PSfont	PS font	Times-Romasn	72
subtickcolor	color	darkgray	44
subticklinestyle	solid dashed dotted none	solid	45
subticks	integer	0	43
subticksize	real	0.75	43
subtickwidth	length	0.5\pslinewidth	52
tickcolor	color	black	44
ticklinestyle	solid dashed dotted none	solid	45
ticks	all x y none	all	40
ticksize	length [length]	-4pt 4pt	41
tickstyle	full top bottom inner	full	41
tickwidth	length	0.5\pslinewidth	52

continued ...

¹ A negative value plots all decimals

... continued

<i>name</i>	<i>type</i>	<i>default</i>	<i>page</i>
trigLabelBase	integer	0	33
trigLabels	boolean	false	33
urx	length	0pt	19
ury	length	0pt	19
valuelwidth	integer	10	72
xAxis	boolean	true	27
xAxisLabel	literal	{\@empty}	19
xAxisLabelPos	(x,y) or empty	{\@empty}	19
xDecimals	integer or empty	{}	32
xEnd	integer or empty	{}	61
xLabels	list	{\empty}	24
xlabelFactor	anything	{\@empty}	31
xlabelPos	bottom,axis,top	bottom	29
xlogBase	integer or empty	{}	50
xticklinestyle	solid dashed dotted none	solid	45
xStart	integer or empty	{}	60
xStep	integer	0	57
xsubtickcolor	color	darkgray	44
xsubticklinestyle	solid dashed dotted none	solid	45
xsubticks	integer	0	43
xsubticksiz	real	0.75	43
xtickcolor	color	black	44
xticksiz	length [length]	-4pt 4pt	41
xtrigLabels	boolean	false	37
xyAxes	boolean	true	27
xyDecimals	integer or empty	{}	32
xylogBase	integer or empty	{}	47
yAxis	boolean	true	27
yAxisLabel	literal	{\@empty}	19
yAxisLabelPos	(x,y) or empty	{\@empty}	19
yDecimals	integer or empty	{}	32
yEnd	integer or empty	{}	62
yLabels	list	{\empty}	24
ylabelFactor	literal	{\empty}	31
ylabelPos	left axis right	left	29
ylogBase	integer or empty	{}	48
yMaxValue	real	-1	24
yStart	integer or empty	{}	62
yStep	integer	0	57
ysubtickcolor	<color>	darkgray	44
ysubticklinestyle	solid dashed dotted none	solid	45

continued ...

... continued

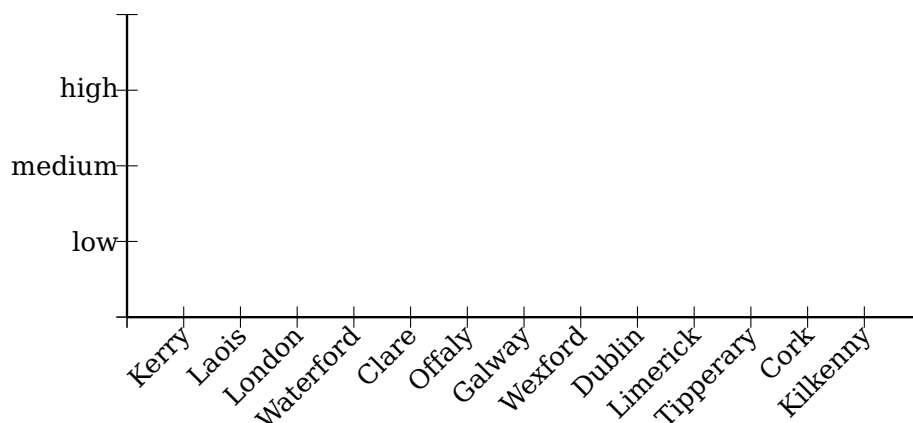
<i>name</i>	<i>type</i>	<i>default</i>	<i>page</i>
ysubticks	integer	0	43
ysubticksize	real	0.75	43
ytickcolor	color>	black	44
yticklinestyle	solid dashed dotted none	solid	45
yticksize	length [length]	-4pt 4pt	41
ytrigLabels	boolean	false	37

6.2. Option xLabels, yLabels, xLabelrot, and yLabelrot

```

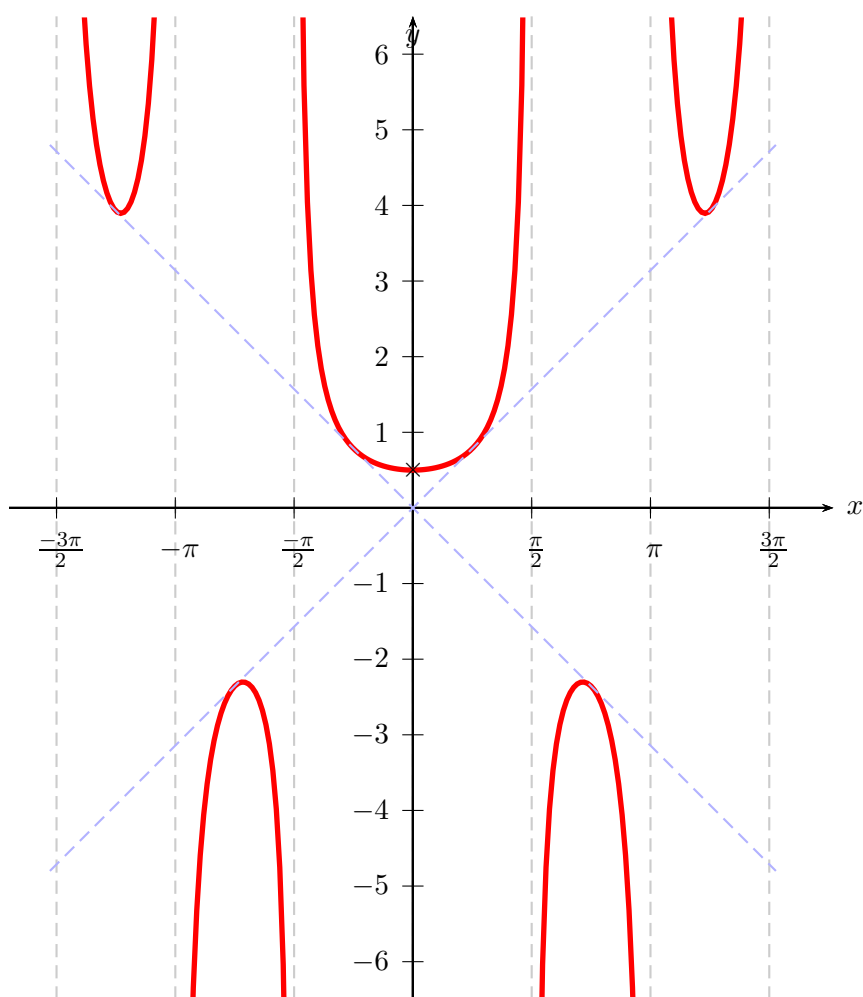
1 \psset{xunit=0.75}
2 \begin{pspicture}(-2,-2)(14,4)
3 \psaxes[xLabels={,Kerry,Laois,London,Waterford,Clare,Offaly,Galway,Wexford,
   Dublin,%
4 Limerick,Tipperary,Cork,Kilkenny},xLabelsRot=45,yLabels={,low,medium,high
   }](14,4)
5 \end{pspicture}

```



6.3. Option yMaxValue

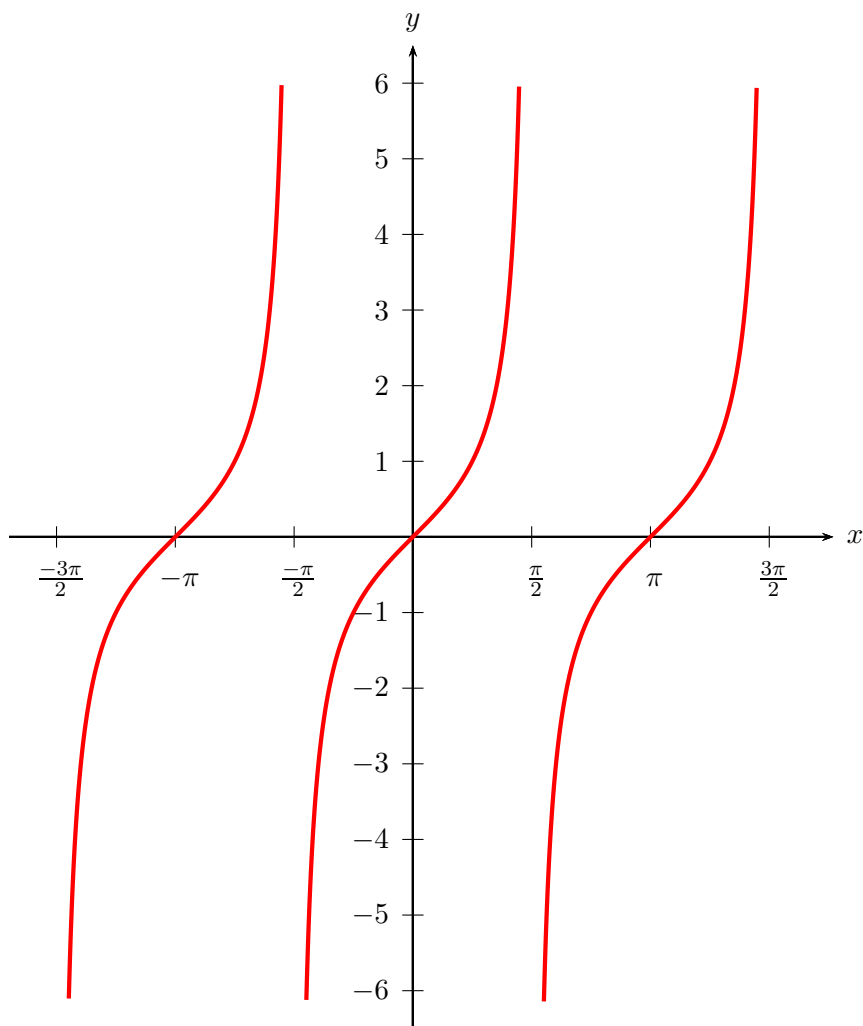
With the new optional argument `yMaxValue` one can control the behaviour of discontinued functions, like the tangent function. If `yMaxValue` is set to a negative value, then the internal if clause is disabled, the function is plotted in the usual way.



```

1 \begin{pspicture}(-6.5,-7)(6.5,7.5)
2 \multido{\rA=-4.71239+\psPiH}{7}{%
3   \psline[linecolor=black!20,linestyle=dashed](\rA,-6.5)(\rA,6.5)}
4 \psset{algebraic=true,plotpoints=200,plotstyle=line}
5 \psaxes[trigLabelBase=2,dx=\psPiH,xunit=\psPi,trigLabels]
6   {->}(0,0)(-1.7,-6.5)(1.77,6.5)[$x$,0][$y$, -90]
7 \psclip{\psframe[linestyle=none](-4.55,-6.5)(5.55,6.5)}
8   \psplot[yMaxValue=10,linewidth=2pt,linecolor=red]{-4.55}{4.55}{(x)/(sin(2*x))
9   }
10 \psplot[linestyle=dashed,linecolor=blue!30]{-4.8}{4.8}{x}
11 \psplot[linestyle=dashed,linecolor=blue!30]{-4.8}{4.8}{-x}
12 \rput(0,0.5){$\times$}
13 \end{pspicture}

```



```

1 \begin{pspicture}(-6.5,-7)(6.5,7.5)
2 \psaxes[trigLabelBase=2,dx=\psPiH,xunit=\psPi,trigLabels]%
3 {->}(0,0)(-1.7,-6.5)(1.77,6.5)[$x$,0][$y$,90]
4 \psset{algebraic=true}
5 \psplot[yMaxValue=6,linewidth=1.6pt,plotpoints=2000,
6   linecolor=red]{-4.55}{4.55}{tan(x)}
7 \end{pspicture}

```

6.4. Option axesstyle

There is a new axes style polar which plots a polar coordinate system.

Syntax:

```

\psplot[axesstyle=polar](Rx,Ry)
\psplot[axesstyle=polar](...)(Rx,Ry)
\psplot[axesstyle=polar](...)(...)(Rx,Ry)

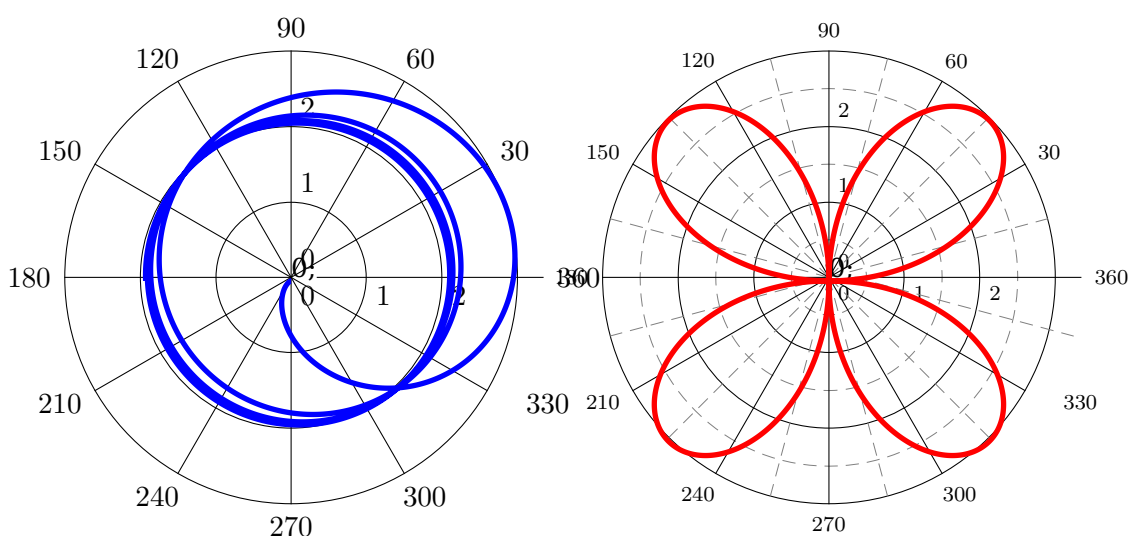
```

Important is the fact, that only one pair of coordinates is taken into account for the radius. It is *always* the last pair in a sequence of allowed coordinates for the `\psaxes` macro. The other ones are ignored; they are not valid for the polar coordinate system.

```

1 \begin{pspicture}(-3.5,-3.5)(3.5,3.5)
2 \psaxes[axesstyle=polar](3,3)
3 \psplot[polarplot,algebraic=true,linecolor=blue,linewidth=2pt,
4   plotpoints=2000]{0}{TwoPi}{4 mul}{2*(sin(x)-x)/(cos(x)+x)}
5 \end{pspicture}
6 %
7 \begin{pspicture}(-3.5,-3.5)(3.5,3.5)
8 \psaxes[axesstyle=polar,subticklinestyle=dashed,subticks=2,
9   labelFontSize=\scriptstyle](3,3)
10 \psplot[polarplot,algebraic=true,linecolor=red,linewidth=2pt,
11   plotpoints=2000]{0}{TwoPi}{6 sin(x)*cos(x)}
12 \end{pspicture}

```



All valid optional arguments for the axes are also possible for the polar style, if they make sense ... :-). Important are the `Dy` option, it defines the angle interval and subticks, for the intermediate circles and lines. The number can be different for the circles (`ysubticks`) and the lines (`xsubticks`).

6.5. Option xyAxes, xAxis and yAxis

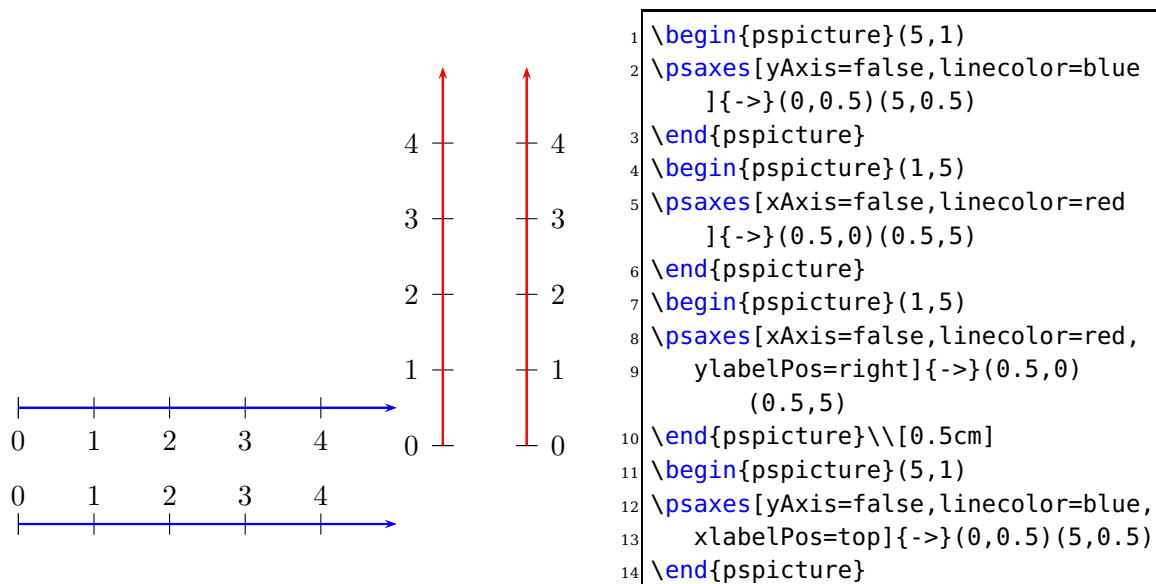
Syntax:

```

xyAxes=true|false
xAxis=true|false
yAxis=true|false

```

Sometimes there is only a need for one axis with ticks. In this case you can set one of the preceding options to false. The `xyAxes` only makes sense when you want to set both x and y to true with only one command, back to the default, because with `xyAxes=false` you get nothing with the `\psaxes` macro.



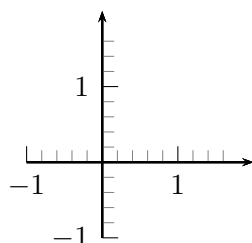
As seen in the example, a single y axis gets the labels on the left side. This can be changed with the option `ylabelPos` or with `xlabelPos` for the *x*-axis.

6.6. Option labels

Syntax:

`labels=all|x|y|none`

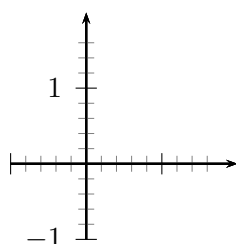
This option was already in the `pst-plot` package and only mentioned here for completeness.



```

1 \psset{ticks=6pt}
2 \begin{pspicture}(-1,-1)(2,2)
3 \psaxes[labels=all,subticks=5]{->}(0,0)(-1,-1)(2,2)
4 \end{pspicture}

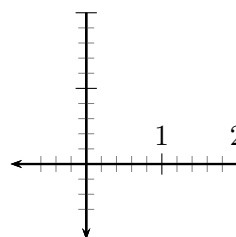
```



```

1 \begin{pspicture}(-1,-1)(2,2)
2 \psaxes[labels=y,subticks=5]{->}(0,0)(-1,-1)(2,2)
3 \end{pspicture}

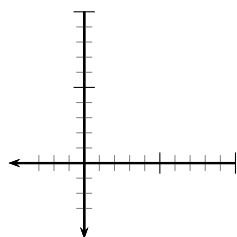
```



```

1 \begin{pspicture}(-1,-1)(2,2)
2 \psaxes[labels=x,subticks=5]{->}(0,0)(2,2)(-1,-1)
3 \end{pspicture}

```



```

1 \begin{pspicture}(-1,-1)(2,2)
2 \psaxes[labels=none,subticks=5]{->}(0,0)(2,2)(-1,-1)
3 \end{pspicture}

```

6.7. Options xlabelPos and ylabelPos

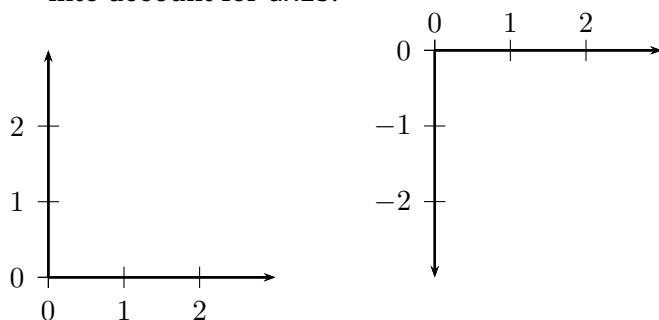
Syntax:

```

xlabelPos=bottom|axis|top
ylabelPos=left|axis|right

```

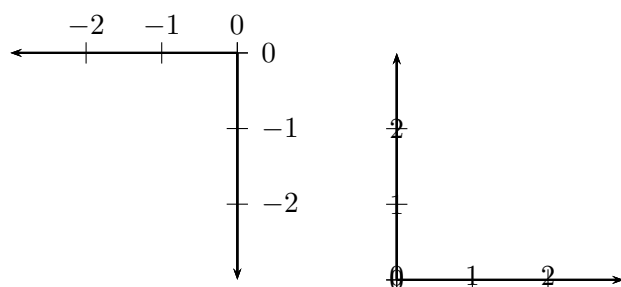
By default the labels for ticks are placed at the bottom (x axis) and left (y-axis). If both axes are drawn in the negative direction the default is top (x axis) and right (y axis). It be changed with the two options xlabelPos and ylabelPos. With the value axis the user can place the labels depending on the value of labelsep, which is taken into account for axis.



```

1 \begin{pspicture}(3,3)
2 \psaxes{->}(3,3)
3 \end{pspicture}\hspace{2cm}
4 \begin{pspicture}(3,-3)
5 \psaxes[xlabelPos=top
6 \hspace{1cm}]{->}(3,-3)
7 \end{pspicture}

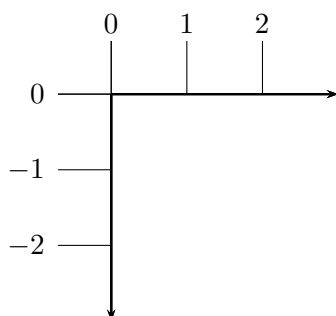
```



```

1 \begin{pspicture}(-3,-3)
2 \psaxes{->}(-3,-3)
3 \end{pspicture}\hspace{2cm}
4 \begin{pspicture}(3,3)
5 \psaxes[labelsep=0pt,
6 \hspace{1cm}ylabelPos=axis,
7 \hspace{1cm}xlabelPos=axis]{->}(3,3)
8 \end{pspicture}

```



```

1 \begin{pspicture}(-1,1)(3,-3)
2 \psaxes[xlabelPos=top,
3 \hspace{1cm}xticks=0 20pt,
4 \hspace{1cm}yticks=-20pt 0]{->}(3,-3)
5 \end{pspicture}

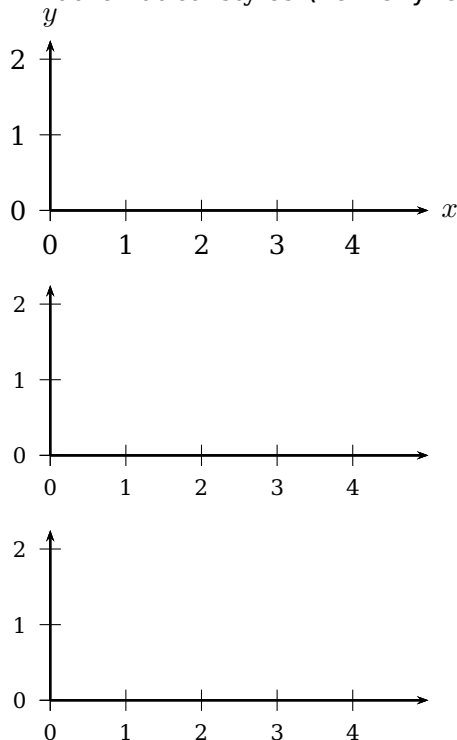
```

6.8. Options `labelFontSize` and `mathLabel`

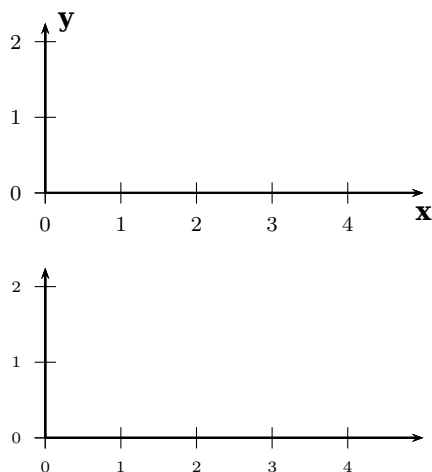
This option sets the horizontal **and** vertical font size for the labels depending on the option `mathLabel` for the text or the math mode. It will be overwritten when another package or a user defines

```
\def\pshlabel#1{\labelFontSize ...}
\def\psvlabel#1{\labelFontSize ...}
\def\pshlabel#1{$\labelFontSize ...}$% for mathLabel=true (default)
\def\psvlabel#1{$\labelFontSize ...}$% for mathLabel=true (default)
```

in another way. Note that for `mathLabel=true` the font size must be set by one of the mathematical styles `\textstyle`, `\displaystyle`, `\scriptstyle`, or `\scriptscriptstyle`.



```
1 \psset{mathLabel=false}
2 \begin{pspicture}(-0.25,-0.25)(5,2.25)
3 \psaxes{->}(5,2.25)[$x$,0][$y$,90]
4 \end{pspicture}\[20pt]
5 \begin{pspicture}(-0.25,-0.25)(5,2.25)
6 \psaxes[labelFontSize=\footnotesize]{->}(5,2.25)
7 \end{pspicture}\[20pt]
8 \begin{pspicture}(-0.25,-0.25)(5,2.25)
9 \psaxes[labelFontSize=\footnotesize]{->}(5,2.25)
10 \end{pspicture}\[20pt]
```

```

1 \begin{pspicture}(-0.25,-0.25)(5,2.25)
2 \psaxes[labelFontSize=\scriptstyle
   ]{->}(5,2.25)[\textbf{x},-90][\textbf{y}
   ],0]
3 \end{pspicture}\[20pt]
4 \psset{mathLabel=true}
5 \begin{pspicture}(-0.25,-0.25)(5,2.25)
6 \psaxes[labelFontSize=\scriptscriptstyle
   ]{->}(5,2.25)
7 \end{pspicture}\[20pt]

```

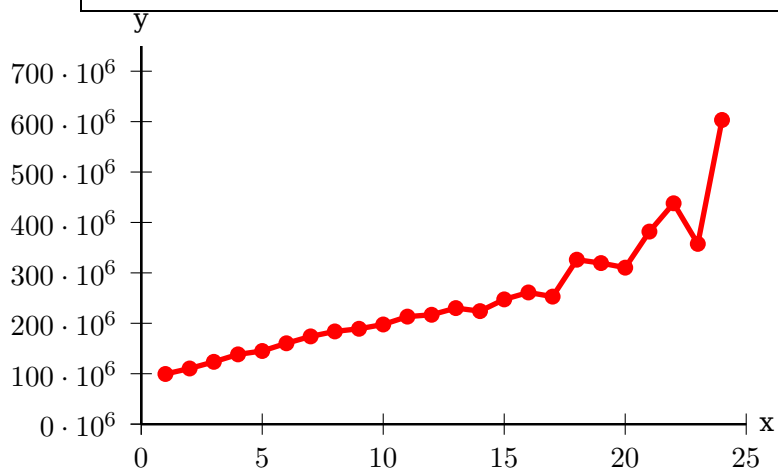
6.9. Options xlabelFactor and ylabelFactor

When having big numbers as data records then it makes sense to write the values as $\langle \text{number} \rangle \cdot 10^{\langle \text{exp} \rangle}$. These new options allow you to define the additional part of the value, but it must be set in math mode when using math operators or macros like \cdot !

```

1 \readdata{\data}{demo1.data}
2 \pstScalePoints(1,0.000001){}% (x,y){additional x operator}{y op}
3 \psset{llx=-1cm,lly=-1cm}
4 \psgraph[ylabelFactor=\cdot 10^6,Dx=5,Dy=100](0,0)(25,750){8cm}{5cm}
5 \listplot[linecolor=red,linewidth=2pt,showpoints=true]{\data}
6 \endpsgraph
7 \pstScalePoints(1,1){}% reset

```



6.10. Options decimalSeparator and comma

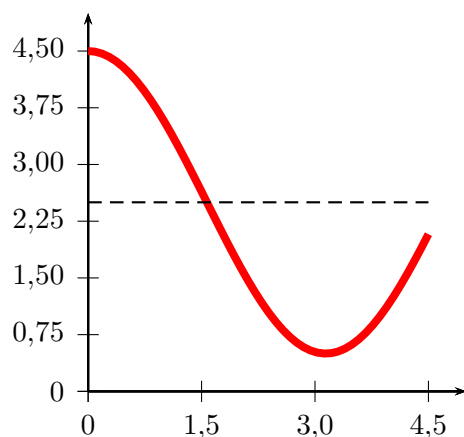
Syntax:

```

comma=false|true
decimalSeparator=<character>

```

Setting the option `comma` to `true` gives labels with a comma as a decimal separator instead of the default dot. `comma` and `comma=true` is the same. The optional argument `decimalSeparator` allows an individual setting for languages with a different character than a dot or a comma. The character has to be set into braces, if it is an active one, e.g. `decimalSeparator={,}`.



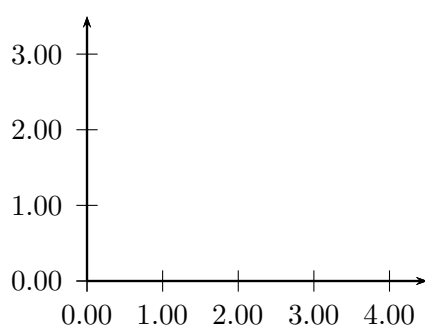
```
1 \begin{pspicture}(-0.5,-0.5)(5,5.5)
2 \psaxes[Dx=1.5,comma,Dy=0.75,dy=0.75]{->}(5,5)
3 \psplot[linecolor=red,linewidth=3pt]{0}{4.5}%
4 {x RadtoDeg cos 2 mul 2.5 add}
5 \psline[linestyle=dashed](0,2.5)(4.5,2.5)
6 \end{pspicture}
```

6.11. Options xyDecimals, xDecimals and yDecimals

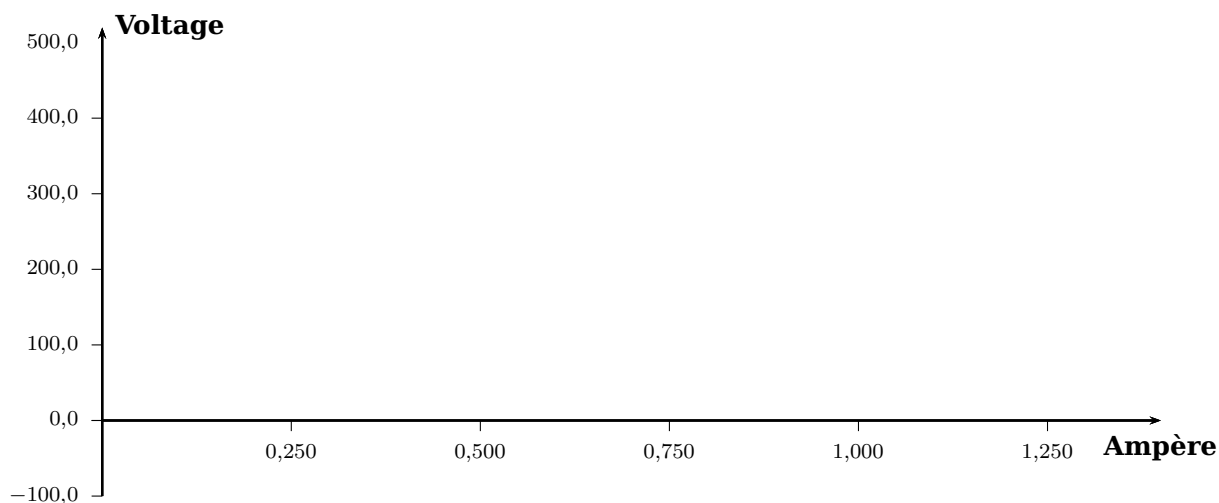
Syntax:

```
xyDecimals=<number>
xDecimals=<any>
yDecimals=<any>
```

By default the labels of the axes get numbers with or without decimals, depending on the numbers itself. With these options it is possible to determine the decimals, where the option `xyDecimals` sets this identical for both axes. `xDecimals` only for the x and `yDecimals` only for the y axis. The default setting `{}` means, that you'll get the standard behaviour.



```
1 \begin{pspicture}(-1.5,-0.5)(5,3.75)
2 \psaxes[xyDecimals=2]{->}(0,0)(4.5,3.5)
3 \end{pspicture}
```



```

1 \psset{xunit=10cm,yunit=0.01cm,labelFontSize=\scriptstyle}
2 \begin{pspicture}(-0.1,-150)(1.5,550.0)
3   \psaxes[Dx=0.25,Dy=100,ticks=-4pt 0,comma,xDecimals=3,yDecimals=1]{->}%
4     (0,0)(0,-100)(1.4,520)[\textbf{Amp\`ere},-90][\textbf{Voltage},0]
5 \end{pspicture}

```

6.12. Options trigLabels, xtrigLabels, ytrigLabels, and trigLabelBase for an axis with trigonometrical units

With the option `trigLabels=true` only the labels on the x axis are trigonometrical ones. It is the same than setting `xtrigLabels=true`. The option `trigLabelBase` sets the denominator of fraction. The default value of 0 is the same as no fraction. The following constants are defined in the package:

```

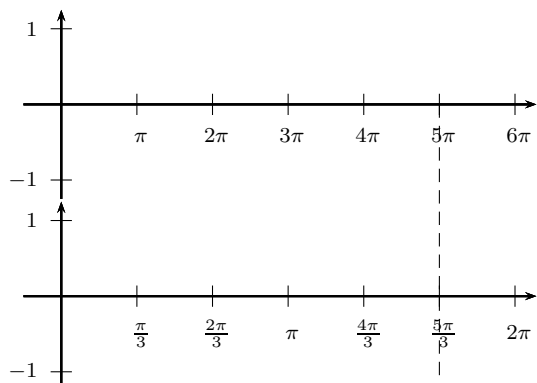
\def\psPiFour{12.566371}
\def\psPiTwo{6.283185}
\def\psPi{3.14159265}
\def\psPiH{1.570796327}
\newdimen\pstRadUnit
\newdimen\pstRadUnitInv
\pstRadUnit=1.047198cm % this is pi/3
\pstRadUnitInv=0.95493cm % this is 3/pi

```

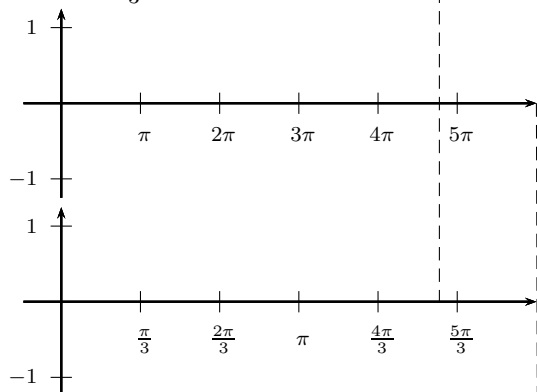
Because it is a bit complicated to set the right values, we show some more examples here. For **all** following examples in this section we did a global

```
\psset{trigLabels,labelFontSize=\scriptstyle}
```

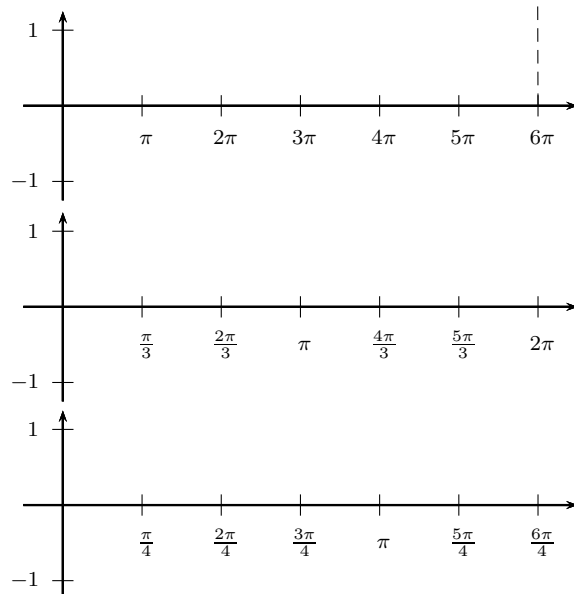
Translating the decimal ticks to trigonometrical ones makes no real sense, because every 1 xunit (1cm) is a tick and the last one is at 6cm.



Modifying the ticks to have the last one exactly at the end is possible with a different dx value ($\frac{\pi}{3} \approx 1.047$):



Set everything globally in radian units. Now 6 units on the x -axis are 6π . Using `trigLabelBase=3` reduces this value to 2π , a.s.o.



```
1 \begin{pspicture}(-0.5,-1.25)(6.5,1.25)%
2   \pnode(5,0){A}%
3   \psaxes{->}(0,0)(-0.5,-1.25)(\psPiTwo,1.25)
4 \end{pspicture}
```

```
1 \begin{pspicture}(-0.5,-1.25)(6.5,1.25)%
2   \psaxes[trigLabelBase=3]{->}(0,0)(-0.5,-1.25)(\psPiTwo,1.25)
3 \end{pspicture}
```

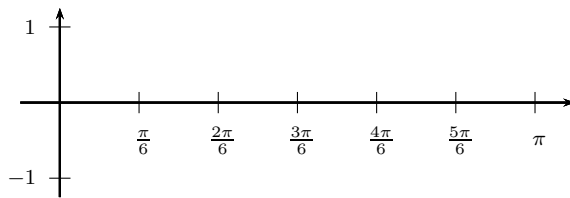
```
1 \begin{pspicture}(-0.5,-1.25)(6.5,1.25)\pnode(\psPiTwo,0){C}%
2   \psaxes[dx=\pstRadUnit]{->}(0,0)(-0.5,-1.25)(\psPiTwo,1.25)
3 \end{pspicture}%
```

```
1 \begin{pspicture}(-0.5,-1.25)(6.5,1.25)\pnode(5,0){B}%
2   \psaxes[dx=\pstRadUnit,trigLabelBase=3]{->}(0,0)(-0.5,-1.25)(\psPiTwo,1.25)
3 \end{pspicture}%
```

```
1 \psset{xunit=\pstRadUnit}%
2 \begin{pspicture}(-0.5,-1.25)(6.5,1.25)\pnode(6,0){D}%
3   \psaxes{->}(0,0)(-0.5,-1.25)(6.5,1.25)%
4 \end{pspicture}%
```

```
1 \psset{xunit=\pstRadUnit}%
2 \begin{pspicture}(-0.5,-1.25)(6.5,1.25)
3   \psaxes[trigLabelBase=3]{->}(0,0)(-0.5,-1.25)(6.5,1.25)
4 \end{pspicture}%
```

```
1 \psset{xunit=\pstRadUnit}%
2 \begin{pspicture}(-0.5,-1.25)(6.5,1.25)
3   \psaxes[trigLabelBase=4]{->}(0,0)(-0.5,-1.25)(6.5,1.25)
4 \end{pspicture}%
```

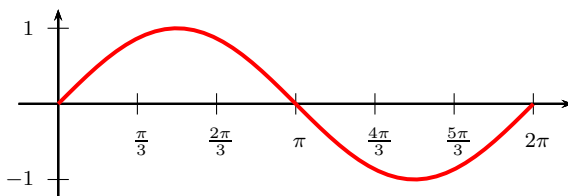


```

1 \psset{xunit=\pstRadUnit}%
2 \begin{pspicture}(-0.5,-1.25)(6.5,1.25)
3   \psaxes[trigLabelBase=6]{->}(0,0)(-0.5,-1.25)
4   (6.5,1.25)
5 \end{pspicture}%

```

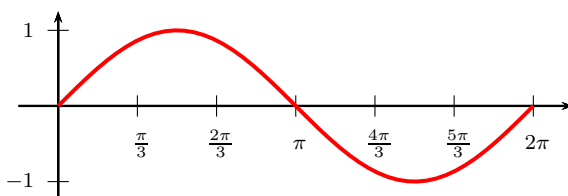
The best way seems to be to set the x -unit to `\pstRadUnit`. Plotting a function doesn't consider the value for `trigLabelBase`, it has to be done by the user. The first example sets the unit locally for the `\psplot` back to 1cm, which is needed, because we use this unit on the PostScript side.



```

1 \psset{xunit=\pstRadUnit}%
2 \begin{pspicture}(-0.5,-1.25)(6.5,1.25)
3   \psaxes[trigLabelBase=3]{->}(0,0)(-0.5,-1.25)
4   (6.5,1.25)
5   \psplot[xunit=1cm,linecolor=red,linewidth=1.5pt]
6   {0}{\psPiTwo}{x RadtoDeg sin}
7 \end{pspicture}

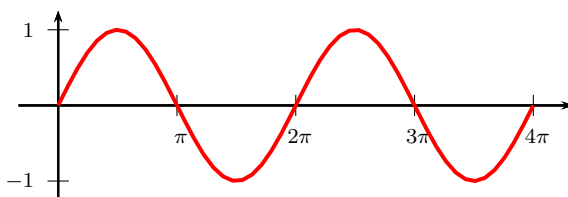
```



```

1 \psset{xunit=\pstRadUnit}%
2 \begin{pspicture}(-0.5,-1.25)(6.5,1.25)
3   \psaxes[trigLabelBase=3]{->}(0,0)(-0.5,-1.25)
4   (6.5,1.25)
5   \psplot[linecolor=red,linewidth=1.5pt]{0}{6}{x
6   Pi 3 div mul RadtoDeg sin}
7 \end{pspicture}

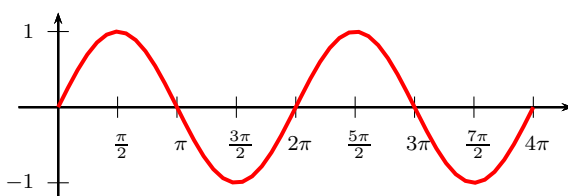
```



```

1 \psset{xunit=\pstRadUnit}%
2 \begin{pspicture}(-0.5,-1.25)(6.5,1.25)
3   \psaxes[dx=1.5]{->}(0,0)(-0.5,-1.25)(6.5,1.25)
4   \psplot[xunit=0.5cm,linecolor=red,linewidth=1.5
5   pt]{0}{\psPiFour}{x RadtoDeg sin}
6 \end{pspicture}

```

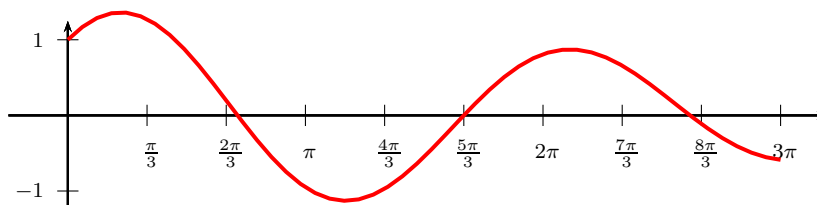


```

1 \psset{xunit=\pstRadUnit}%
2 \begin{pspicture}(-0.5,-1.25)(6.5,1.25)
3   \psaxes[dx=0.75,trigLabelBase=2]{->}(0,0)
4   (-0.5,-1.25)(6.5,1.25)
5   \psplot[xunit=0.5cm,linecolor=red,linewidth=1.5
6   pt]{0}{\psPiFour}{x RadtoDeg sin}
7 \end{pspicture}

```

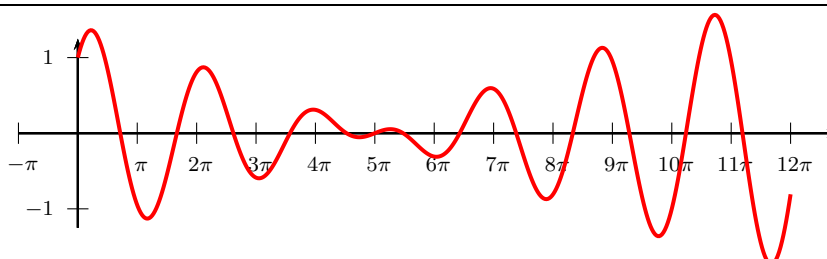
It is also possible to set the x unit and dx value to get the labels right. But this needs some more understanding as to how it really works. A `xunit=1.570796327` sets the unit to $\pi/2$ and a `dx=0.666667` then puts at every $2/3$ of the unit a tick mark and a label. The length of the x -axis is 6.4 units which is $6.4 \cdot 1.570796327 \text{ cm} \approx 10 \text{ cm}$. The function is then plotted from 0 to $3\pi = 9.424777961$.



```

1 \begin{pspicture}(-0.5,-1.25)(10,1.25)
2   \psaxes[xunit=\psPiH,trigLabelBase=3,dx=0.666667]{->}(0,0)(-0.5,-1.25)
   (6.4,1.25)
3   \psplot[linecolor=red,linewidth=1.5pt]{0}{9.424777961}{%
4     x RadtoDeg dup sin exch 1.1 mul cos add}
5 \end{pspicture}

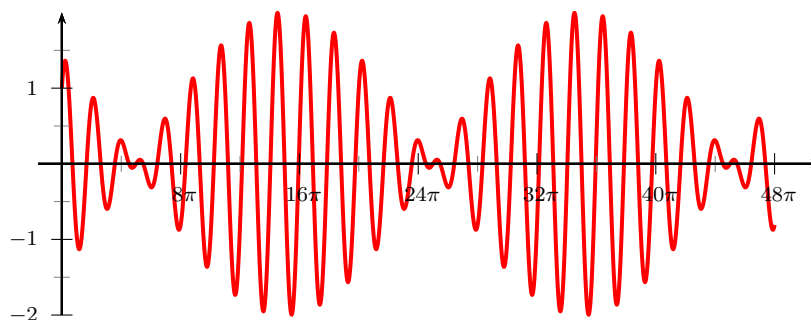
```



```

1 \psset{unit=1cm}
2 \psplot[xunit=0.25,plotpoints=500,linecolor=red,linewidth=1.5pt]{0}{37.70}{%
3   x RadtoDeg dup sin exch 1.1 mul cos add}
4 \end{pspicture}

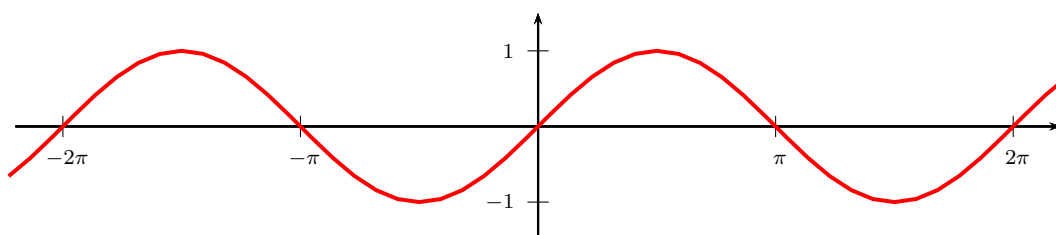
```



```

1 \psset{unit=1cm}
2 \begin{pspicture}(-0.5,-1.25)(10,1.25)
3   \psplot[xunit=0.0625,linecolor=red,linewidth=1.5pt,%
4     plotpoints=5000]{0}{150.80}{%
5     {x RadtoDeg dup sin exch 1.1 mul cos add}
6   \psaxes[xunit=\psPi,dx=0.5,Dx=8]{->}(0,0)(-0.25,-1.25)(3.2,1.25)
7 \end{pspicture}

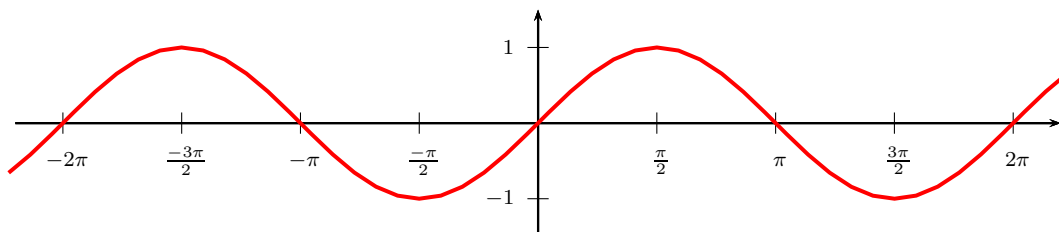
```



```

1 \begin{pspicture}(-7,-1.5)(7,1.5)
2   \psaxes[trigLabels=true,xunit=\psPi]{->}(0,0)(-2.2,-1.5)(2.2,1.5)
3   \psplot[linecolor=red,linewidth=1.5pt]{-7}{7}{x RadtoDeg sin}
4 \end{pspicture}

```

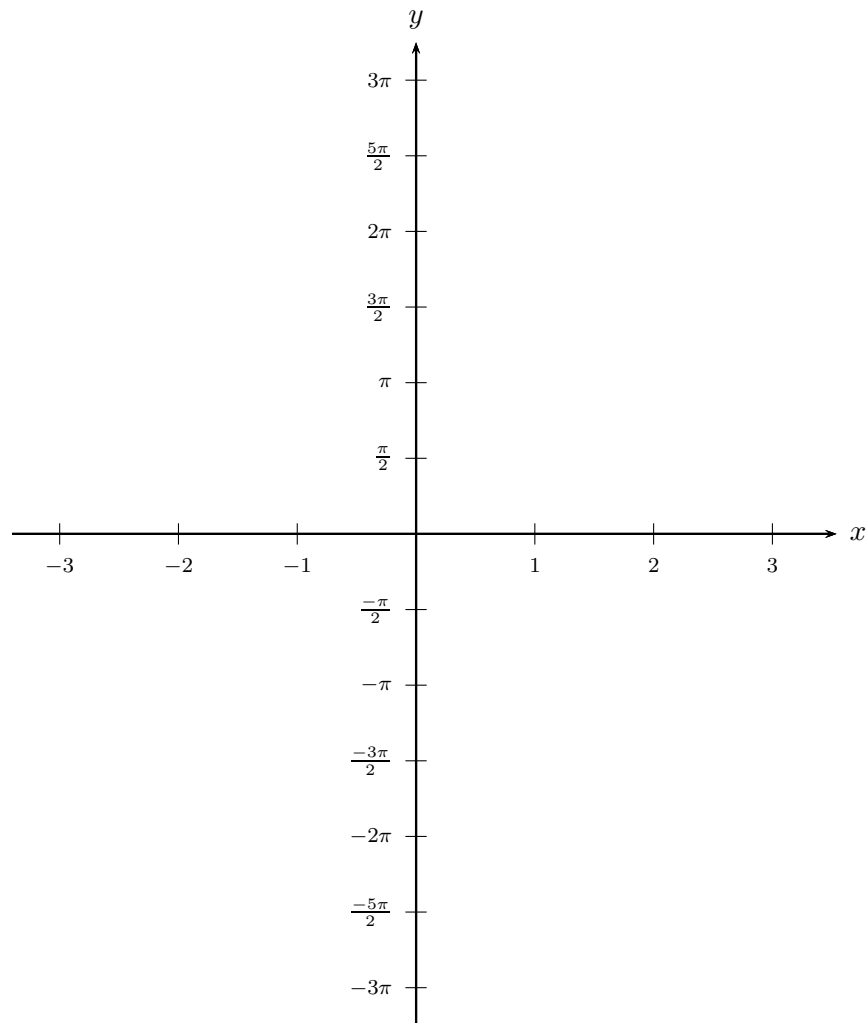


```

1 \begin{pspicture}(-7,-1.5)(7,1.5)
2   \psaxes[trigLabels=true,
3   trigLabelBase=2,dx=\psPiH,xunit=\psPi]{->}(0,0)(-2.2,-1.5)(2.2,1.5)
4   \psplot[linecolor=red,linewidth=1.5pt]{-7}{7}{x RadtoDeg sin}
5 \end{pspicture}

```

The setting of trigonometrical labels with `ytriglabels=true` for the y axis is the same as for the x axis.

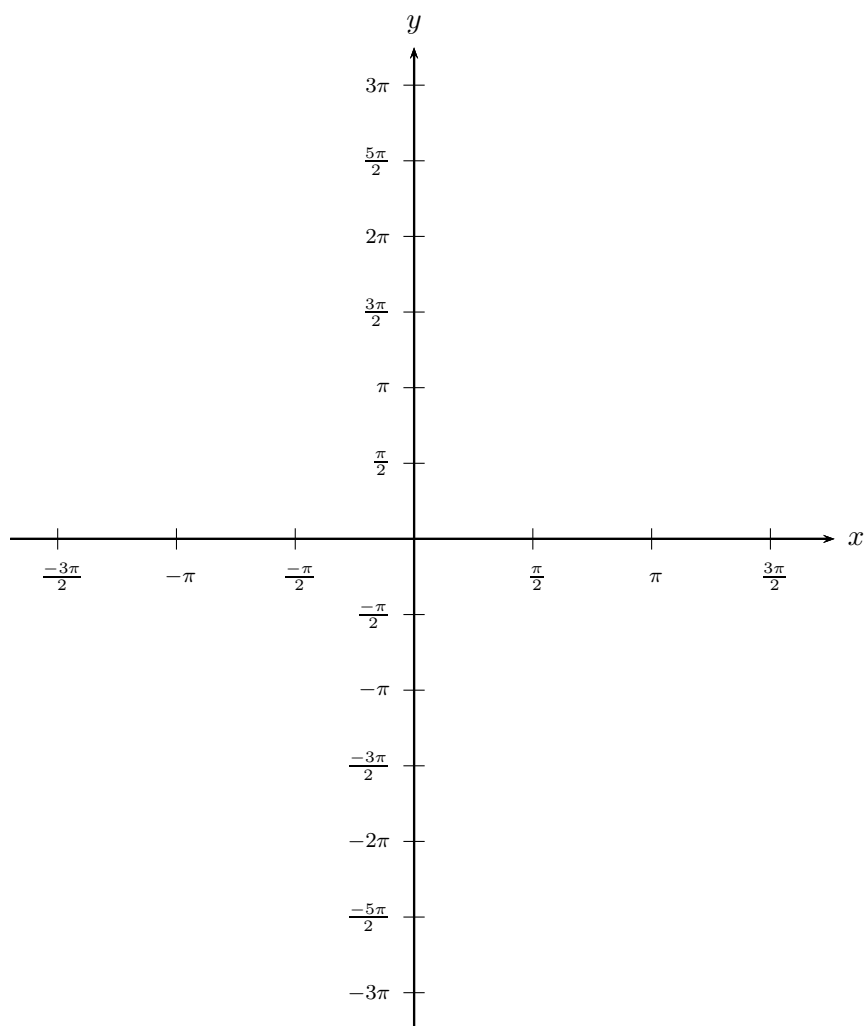


```

1 \psset{unit=1cm}
2 \begin{pspicture}(-6.5,-7)(6.5,7.5)
3 \psaxes[trigLabelBase=2,dx=\psPiH,xunit=\psPi,ytrigLabels]
4   {->}(0,0)(-1.7,-6.5)(1.77,6.5)[$x$,0][$y$,90]
5 \end{pspicture}

```

Also setting labels for the x axis is possible with `trigLabels=true` or alternatively with `ytrigLabels=true`.



```

1 \psset{unit=1cm}
2 \begin{pspicture}(-6.5,-7)(6.5,7.5)
3 \psaxes[trigLabelBase=2,dx=\psPiH,xunit=\psPi,xtrigLabels,ytrigLabels]
4   {->}(0,0)(-1.7,-6.5)(1.77,6.5)[$x$,0][$y$,90]
5 \end{pspicture}

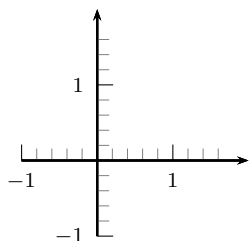
```

6.13. Option ticks

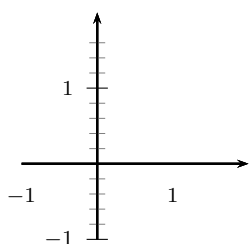
Syntax:

`ticks=all|x|y|none`

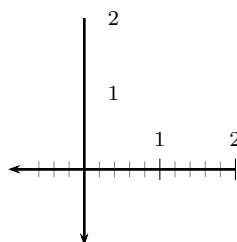
This option was already in the `pst-plot` package and only mentioned here for some completeness.



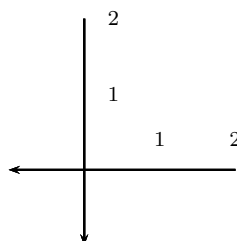
```
1 \psset{ticks=6pt}
2 \begin{pspicture}(-1,-1)(2,2)
3 \psaxes[ticks=all,subticks=5]{->}(0,0)(-1,-1)(2,2)
4 \end{pspicture}
```



```
1 \begin{pspicture}(-1,-1)(2,2)
2 \psaxes[ticks=y,subticks=5]{->}(0,0)(-1,-1)(2,2)
3 \end{pspicture}
```



```
1 \begin{pspicture}(-1,-1)(2,2)
2 \psaxes[ticks=x,subticks=5]{->}(0,0)(2,2)(-1,-1)
3 \end{pspicture}
```



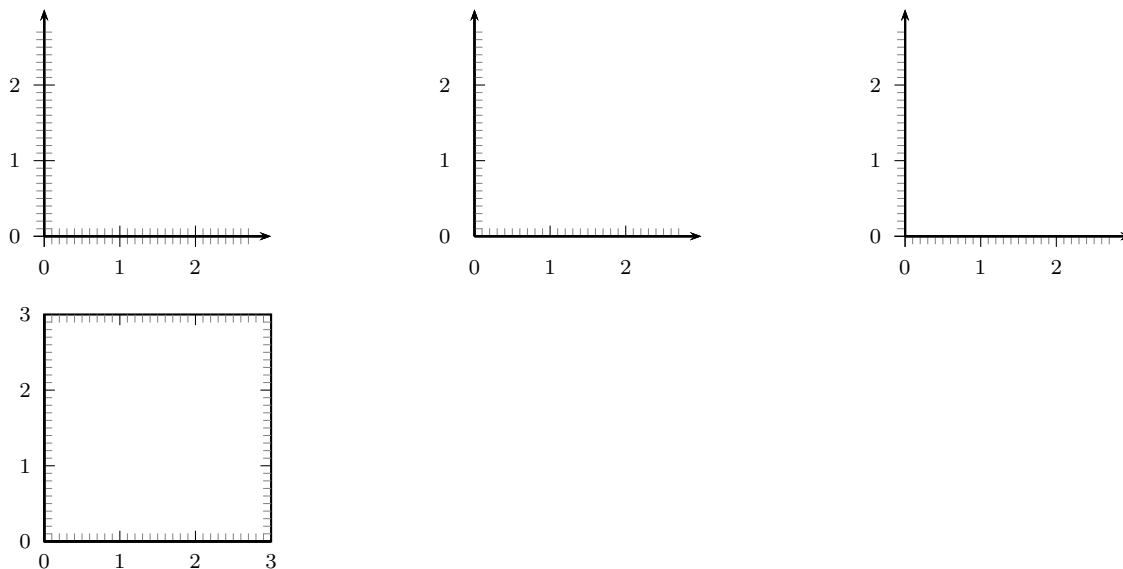
```
1 \begin{pspicture}(-1,-1)(2,2)
2 \psaxes[ticks=none,subticks=5]{->}(0,0)(2,2)(-1,-1)
3 \end{pspicture}
```

6.14. Option tickstyle

Syntax:

tickstyle=full|top|bottom|inner

The value inner is only possible for the axes style frame.



```

1 \psset{subticks=10}
2 \begin{pspicture}(-1,-1)(3,3) \psaxes[tickstyle=full]{->}(3,3) \end{pspicture}
3 \begin{pspicture}(-1,-1)(3,3) \psaxes[tickstyle=top]{->}(3,3) \end{pspicture}
4 \begin{pspicture}(-1,-1)(3,3) \psaxes[tickstyle=bottom]{->}(3,3)\end{pspicture}
5 \begin{pspicture}(-1,-1)(3,3)
6   \psaxes[axesstyle=frame, tickstyle=inner, ticksize=0 4pt]{->}(3,3)
7 \end{pspicture}

```

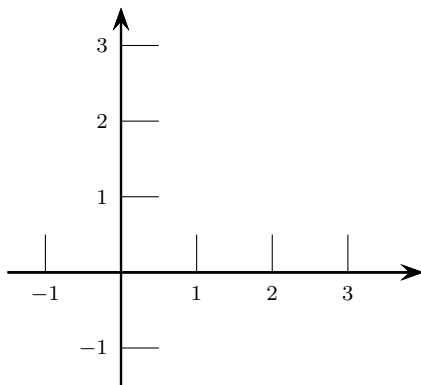
6.15. Options ticksize, xticksize, yticksize

With this new option the recent tickstyle option of pst-plot is obsolete and no longer supported by psticks-add.

Syntax:

ticksize=value[unit]
 ticksize=value[unit] value[unit]
 xticksize=value[unit]
 xticksize=value[unit] value[unit]
 yticksize=value[unit]
 yticksize=value[unit] value[unit]

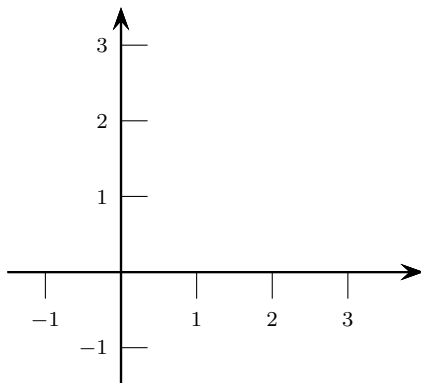
ticksize sets both values. The first one is left/below and the optional second one is right/above of the coordinate axis. The old setting tickstyle=bottom is now easy to realize, e.g.: ticksize=-6pt 0, or vice versa, if the coordinates are set from positive to negative values.



```

1 \psset{arrowscale=2}
2 \begin{pspicture}(-1.5,-1.5)(4,3.5)
3   \psaxes[ticksize=0.5cm]{->}(0,0)(-1.5,-1.5)
4   (4,3.5)
5 \end{pspicture}

```

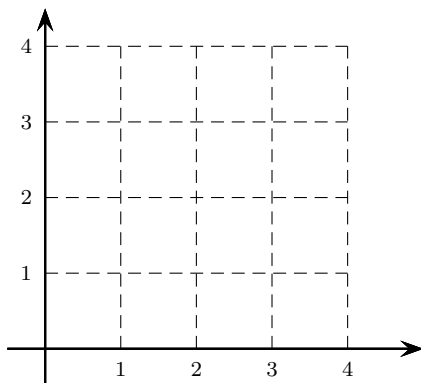


```

1 \psset{arrowscale=2}
2 \begin{pspicture}(-1.5,-1.5)(4,3.5)
3   \psaxes[xticksize=-10pt 0,yticksize=0 10pt]{%
4     {->}(0,0)(-1.5,-1.5)(4,3.5)
5 \end{pspicture}

```

A grid is also possible by setting the values to the max/min coordinates.



```

1 \psset{arrowscale=2}
2 \begin{pspicture}(-.5,-.5)(5,4.5)
3   \psaxes[ticklinestyle=dashed,
4     ticksize=0 4cm]{->}(0,0)(-.5,-.5)(5,4.5)
5 \end{pspicture}

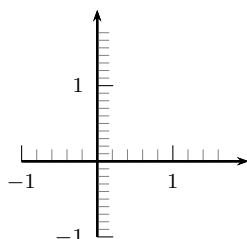
```

6.16. Options subticks, xsubticks, and ysubticks

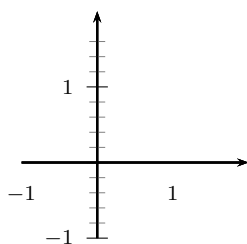
Syntax:

```
subticks=<number>
xsubticks=<number>
ysubticks=<number>
```

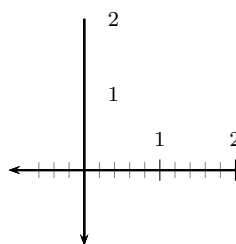
By default subticks cannot have labels.



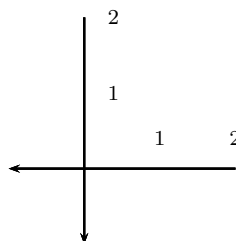
```
1 \psset{ticks=6pt}
2 \begin{pspicture}(-1,-1)(2,2)
3 \psaxes[ticks=all,xsubticks=5,
4   ysubticks=10]{->}(0,0)(-1,-1)(2,2)
5 \end{pspicture}
```



```
1 \begin{pspicture}(-1,-1)(2,2)
2 \psaxes[ticks=y,subticks=5]{->}(0,0)(-1,-1)(2,2)
3 \end{pspicture}
```



```
1 \begin{pspicture}(-1,-1)(2,2)
2 \psaxes[ticks=x,subticks=5]{->}(0,0)(2,2)(-1,-1)
3 \end{pspicture}
```



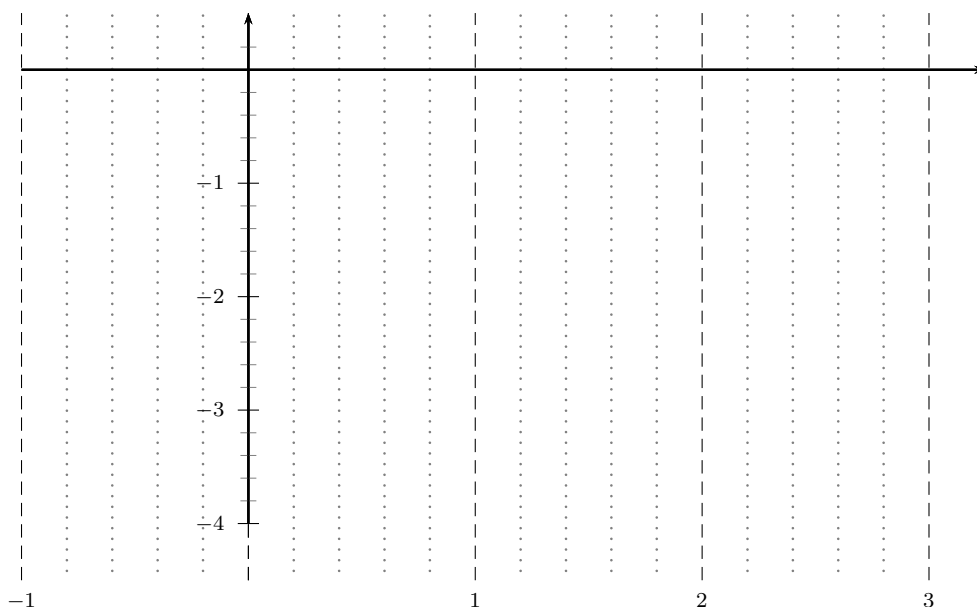
```
1 \begin{pspicture}(-1,-1)(2,2)
2 \psaxes[ticks=none,subticks=5]{->}(0,0)(2,2)(-1,-1)
3 \end{pspicture}
```

6.17. Options subticksize, xsubticksize, ysubticksize

subticksize sets both values, xsubticksize only for the x -axis and ysubticksize only for the y -axis, which must be relative to the ticksize length and can have any number. 1 sets it to the same length as the main ticks.

Syntax:

```
subticksize=value
xsubticksize=value
ysubticksize=value
```



```

1 \psset{yunit=1.5cm,xunit=3cm}
2 \begin{pspicture}(-1.25,-4.75)(3.25,.75)
3   \psaxes[xticks=-4.5 0.5,ticklinestyle=dashed,subticks=5,xsubticks=1,%
4     ysubticks=0.75,xsubticklinestyle=dotted,xsubtickwidth=1pt,
5     subtickcolor=gray]{->}(0,0)(-1,-4)(3.25,0.5)
6 \end{pspicture}

```

6.18. Options tickcolor, xtickcolor, ytickcolor, subtickcolor, xsubtickcolor, and ysubtickcolor

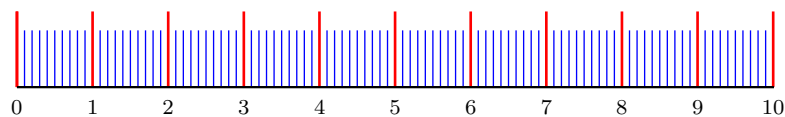
Syntax:

```

tickcolor=<color>
xtickcolor=<color>
ytickcolor=<color>
subtickcolor=<color>
xsubtickcolor=<color>
ysubtickcolor=<color>

```

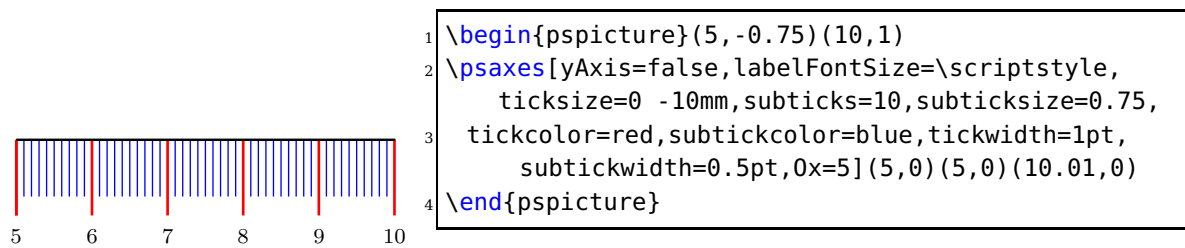
tickcolor and subtickcolor set both for the x - and the y -Axis.



```

1 \begin{pspicture}(0,-0.75)(10,1)
2 \psaxes[yAxis=false,labelFontSize=\scriptstyle,ticks=0 10mm,subticks=10,
3   subticksize=0.75,
4   tickcolor=red,subtickcolor=blue,tickwidth=1pt,subtickwidth=0.5pt](10.01,0)
5 \end{pspicture}

```



6.19. Options ticklinestyle, xticklinestyle, yticklinestyle, subticklinestyle, xsubticklinestyle, and ysubticklinestyle

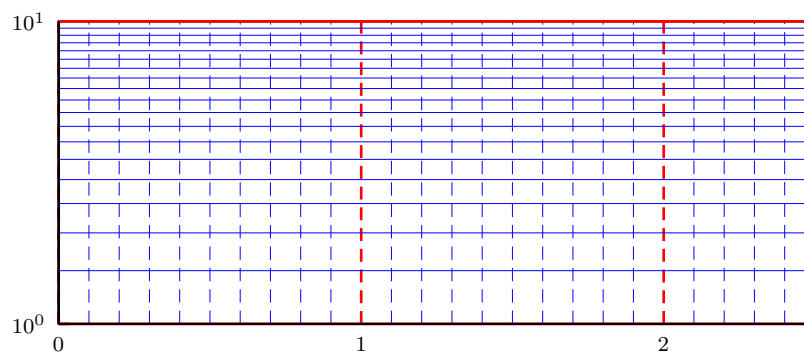
Syntax:

```

ticklinestyle=solid|dashed|dotted|none
xticklinestyle=solid|dashed|dotted|none
yticklinestyle=solid|dashed|dotted|none
subticklinestyle=solid|dashed|dotted|none
xsubticklinestyle=solid|dashed|dotted|none
ysubticklinestyle=solid|dashed|dotted|none

```

ticklinestyle and subticklinestyle set both values for the x and y axis. The value none doesn't really makes sense, because it is the same as [sub]ticklines=0



```

1 \psset{unit=4cm}
2 \pspicture(-0.15,-0.15)(2.5,1)
3 \psaxes[axesstyle=frame,logLines=y,xticksize=0 1,xsubticksize=1,ylogBase=10,
4   tickcolor=red,subtickcolor=blue,tickwidth=1pt,subticks=20,xsubticks=10,
5   xticklinestyle=dashed,xsubticklinestyle=dashed](2.5,1)
6 \endpspicture

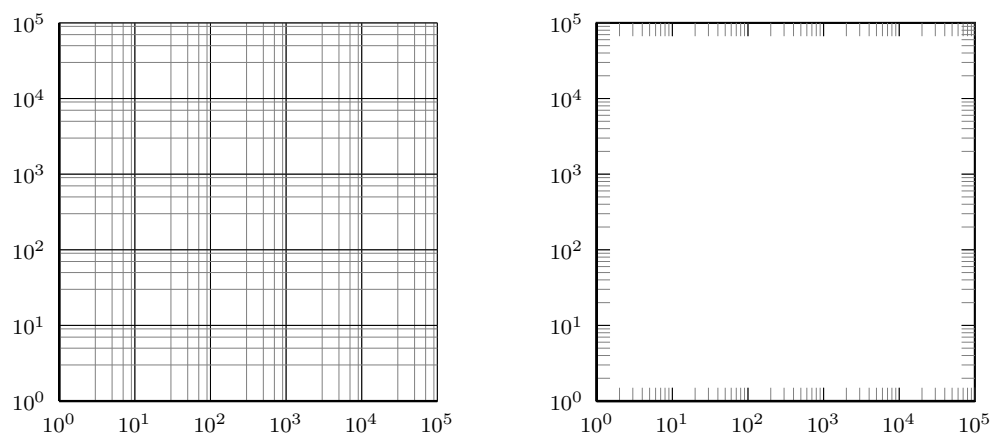
```

6.20. logLines

Syntax:

```
logLines=all|x|y
```

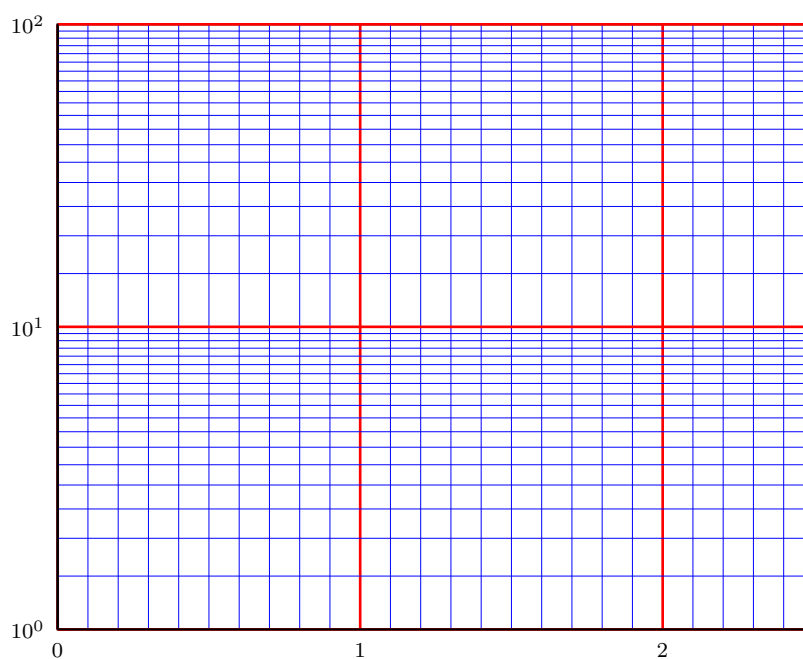
By default the option logLines sets the ticksize to the maximal length for x, y, or both. It can be changed, when *after* the option logLines the ticksize is set.



```

1 \pspicture(-1,-1)(5,5)
2   \psaxes[subticks=5,xylogBase=10,logLines=all](5,5)
3 \endpspicture\hspace{1cm}
4 \pspicture(-1,-1)(5,5)
5   \psaxes[subticks=10,axesstyle=frame,xylogBase=10,logLines=all,
6     ticksize=0 5pt,tickstyle=inner](5,5)
7 \endpspicture

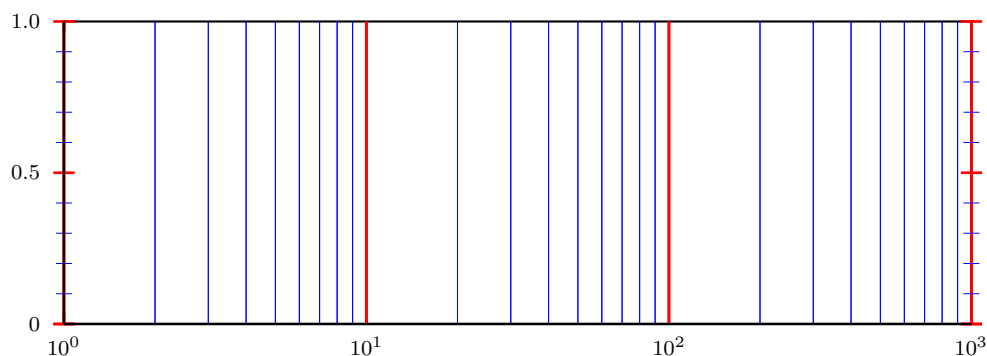
```



```

1 \psset{unit=4cm}
2 \pspicture(-0.15,-0.15)(2.5,2)
3   \psaxes[axesstyle=frame,logLines=y,xticks=max,xsubticks=1,ylogBase=10,
4     tickcolor=red,subtickcolor=blue,tickwidth=1pt,subticks=20,xsubticks
5     =10](2.5,2)
6 \endpspicture

```

```

1 \psset{unit=4}
2 \pspicture(-0.5,-0.3)(3,1.2)
3   \psaxes[axesstyle=frame,tickstyle=inner,logLines=x,xlogBase=10,Dy=0.5,
4     tickcolor=red,
5     subtickcolor=blue,tickwidth=1pt,ysubticks=5,xsubticks=10](3,1)
6 \endpspicture

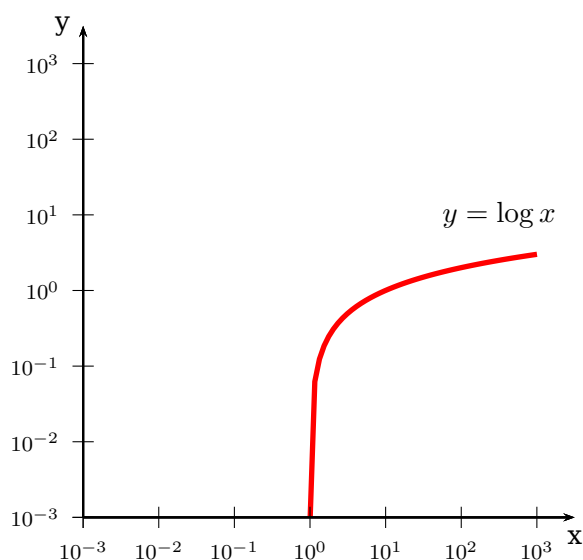
```

6.21. xylogBase, xlogBase and ylogBase

There are additional options `xylogBase`, `xlogBase`, `ylogBase` to get one or both axes with logarithmic labels. For an interval of $[10^{-3} \dots 10^2]$ choose a PSTricks interval of $[-3, 2]$. PSTricks takes 0 as the origin of this axes, which is wrong if we want to have a logarithmic axes. With the options `0y` and `0x` we can set the origin to -3 , so that the first label gets 10^{-3} . If this is not done by the user then `pst-plot` does it by default. An alternative is to set these parameters to empty values `0x={}`, `0y={}`, in this case the package does nothing.

6.22. xylogBase

This mode in math is also called double logarithmic. It is a combination of the two foregoing modes and the function is now $y = \log x$ and is shown in the following example.



```

1 \begin{pspicture}(-3.5,-3.5)(3.5,3.5)
2   \psplot[linewidth=2pt,linecolor=red
3     ]{0.001}{3}{x log}
4   \psaxes[xylogBase=10,0y=-3,0x
5     =-3]{->}(-3,-3)(3.5,3.5)
6   \uput[-90](3.5,-3){x}
7   \uput[180](-3,3.5){y}
8   \rput(2.5,1){$y=\log x$}
9 \end{pspicture}

```

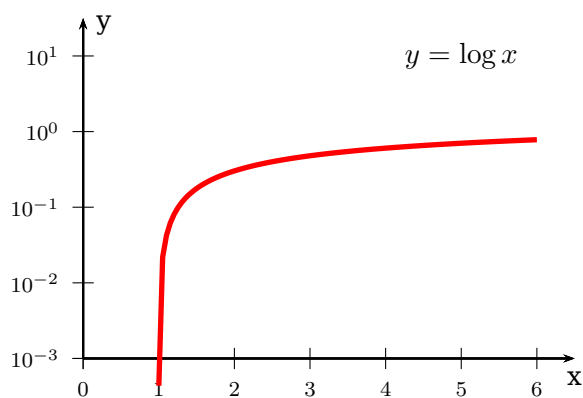
6.23. ylogBase

The values for the `\psaxes` y-coordinate are now the exponents to the base 10 and for the right function to the base e : $10^{-3} \dots 10^1$ which corresponds to the given y-interval $-3 \dots 1.5$, where only integers as exponents are possible. These logarithmic labels have no effect on the internally used units. To draw the logarithm function we have to use the math function

$$y = \log\{\log x\}$$

$$y = \ln\{\ln x\}$$

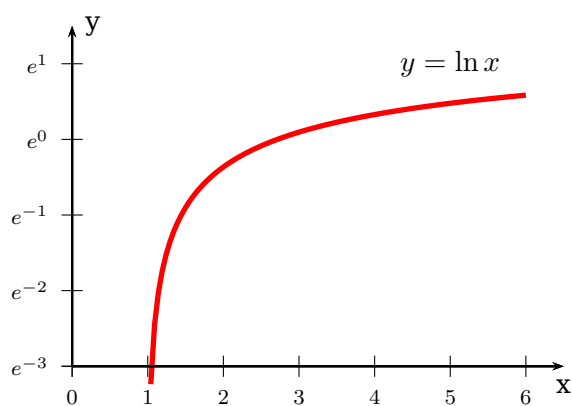
with an drawing interval of $1.001 \dots 6$.



```

1 \begin{pspicture}(-0.5,-3.5)(6.5,1.5)
2   \psaxes[ylogBase=10,0y=-3]{->}(0,-3)
3     (6.5,1.5)
4   \uput[-90](6.5,-3){x}
5   \uput[0](0,1.4){y}
6   \rput(5,1){$y=\log x$}
7   \psplot[linewidth=2pt,%
8     plotpoints=100,linecolor=red
9     ]{1.001}{6}{x log log} % log(log(x))
10 \end{pspicture}

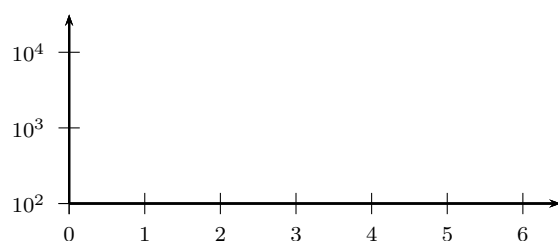
```



```

1 \begin{pspicture}(-0.5,-3.5)(6.5,1.5)
2   \psplot[linewidth=2pt,plotpoints=100,
3     linecolor=red]%
4     {1.04}{6}[ /ln {log 0.4343 div} def
5       ]{x ln ln} % log(x)
6   \psaxes[ylogBase=e,0y=-3]{->}(0,-3)
7     (6.5,1.5)
8   \uput[-90](6.5,-3){x}
9   \uput[0](0,1.5){y}
10  \rput(5,1){$y=\ln x$}
11 \end{pspicture}

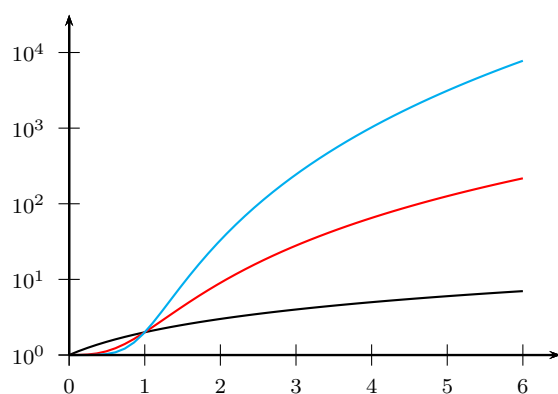
```



```

1 \begin{pspicture}(-0.5,1.75)(6.5,4.5)
2   \psaxes[ylogBase=10,0y=2]{->}(0,2)
3     (0,2)(6.5,4.5)
4 \end{pspicture}

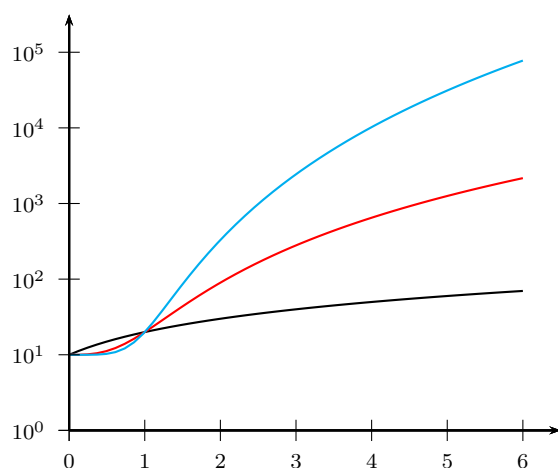
```



```

1 \begin{pspicture}(-0.5,-0.25)(6.5,4.5)
2   \psplot{0}{6}{x x cos add log}
3     % x + cos(x)
4   \psplot[linewidth=red]{0}{6}{x 3 exp
5     x cos add log} % x^3 + cos(x)
6   \psplot[linewidth=cyan]{0}{6}{x 5 exp
7     x cos add log} % x^5 + cos(x)
8   \psaxes[ylogBase=10]{->}(6.5,4.5)
9 \end{pspicture}

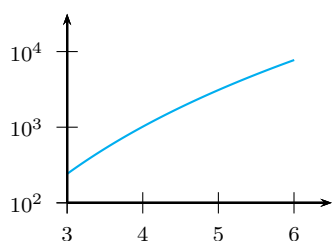
```



```

1 \begin{pspicture}(-0.5,-1.25)(6.5,4.5)
2   \psplot{0}{6}{x x cos add log}
3     % x + cos(x)
4   \psplot[linewidth=red]{0}{6}{x 3 exp x
5     cos add log} % x^3 + cos(x)
6   \psplot[linewidth=cyan]{0}{6}{x 5 exp x
7     cos add log} % x^5 + cos(x)
8   \psaxes[ylogBase=10]{->}(0,-1)(0,-1)
9     (6.5,4.5)
10 \end{pspicture}

```



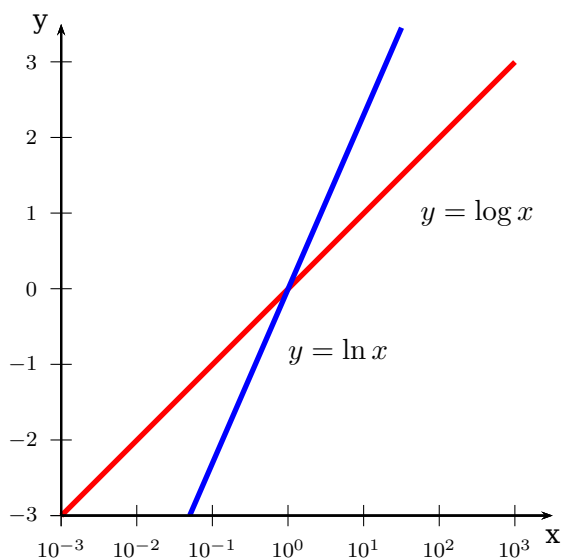
```

1 \begin{pspicture}(2.5,1.75)(6.5,4.5)
2   \psplot[linecolor=cyan]{3}{6}{x^5 exp x cos add log} %
3   x^5 + cos(x)
4 \end{pspicture}

```

6.24. xlogBase

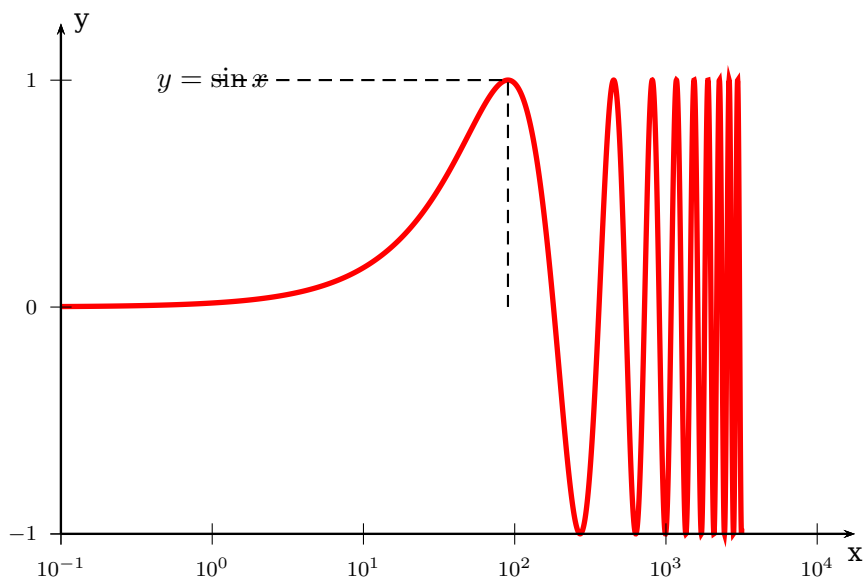
Now we have to use the easy math function $y = x$ because the x axis is still $\log x$.



```

1 \begin{pspicture}(-3.5,-3.5)(3.5,3.5)
2   \psplot[linewidth=2pt,linecolor=red]
3   [-3]{3}{x} % log(x)
4   \psplot[linewidth=2pt,linecolor=blue]
5   [-1.3]{1.5}{x 0.4343 div} % ln(x)
6   \psaxes[xlogBase=10,0y=-3,0x
7   =-3]{->}(-3,-3)(3.5,3.5)
8   \uput[-90](3.5,-3){x}
9   \uput[180](-3,3.5){y}
10  \rput(2.5,1){$y=\log x$}
11  \rput[lb](0,-1){$y=\ln x$}
12 \end{pspicture}

```



```

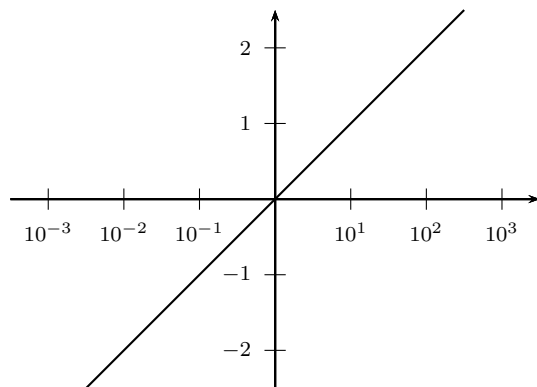
1 \psset{yunit=3cm,xunit=2cm}
2 \begin{pspicture}(-1.25,-1.25)(4.25,1.5)
3   \uput[-90](4.25,-1){x}

```

```

4 \uput[0](-1,1.25){y}
5 \rput(0,1){$y=\sin x$}
6 \psplot[linewidth=2pt,plotpoints=5000,linecolor=red]{-1}{3.5}{10 x exp sin }
7 \psaxes[xlogBase=10,0x=-1,0y=-1]{->}(-1,-1)(4.25,1.25)
8 \psline[linestyle=dashed](-1,0)(4,0)
9 \psline[linestyle=dashed](!-1 1)(!90 log 1)(!90 log -1)
10 \psline[linestyle=dashed](!90 log 1)(!180 log 1)(!180 log -1)
11 \end{pspicture}

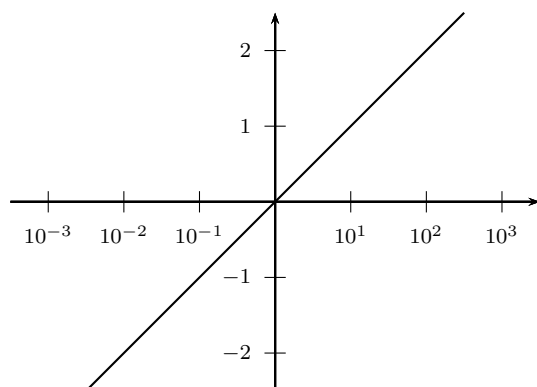
```



```

1 \begin{pspicture}(-3.5,-2.5)(3.5,2.5)
2 \psaxes[xlogBase=10]{->}(0,0)
   (-3.5,-2.5)(3.5,2.5)
3 \psplot{-2.5}{2.5}{10 x exp log}
4 \end{pspicture}

```



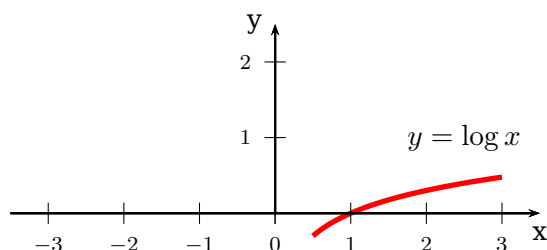
```

1 \begin{pspicture}(-3.5,-2.5)(3.5,2.5)
2 \psaxes[xlogBase=10,0x={},0y
   ={}]{->}(0,0)(-3.5,-2.5)(3.5,2.5)
3 \psplot{-2.5}{2.5}{10 x exp log}
4 \end{pspicture}

```

6.25. No logstyle (xylogBase={})

This is only a demonstration that the default option `={}` still works ... :-)

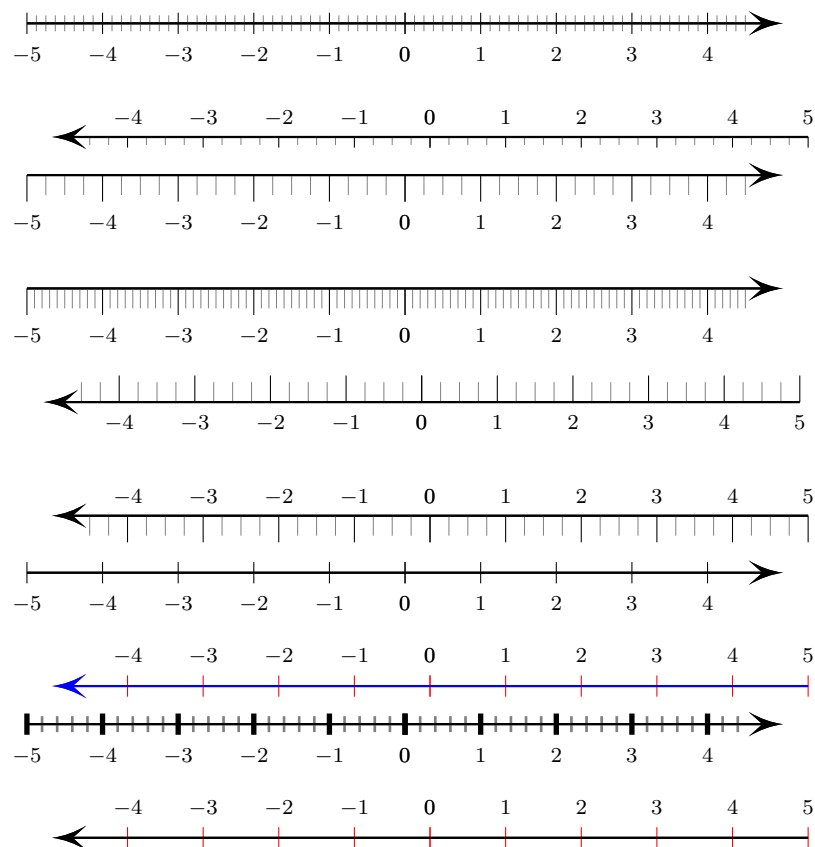


```

1 \begin{pspicture}(-3.5,-0.5)(3.5,2.5)
2 \psplot[linewidth=2pt,linecolor=red,
   xylogBase={}]{0.5}{3}{x log} % log(
   x)
3 \psaxes{->}(0,0)(-3.5,0)(3.5,2.5)
4 \uput[-90](3.5,0){x}
5 \uput[180](0,2.5){y}
6 \rput(2.5,1){$y=\log x$}
7 \end{pspicture}

```

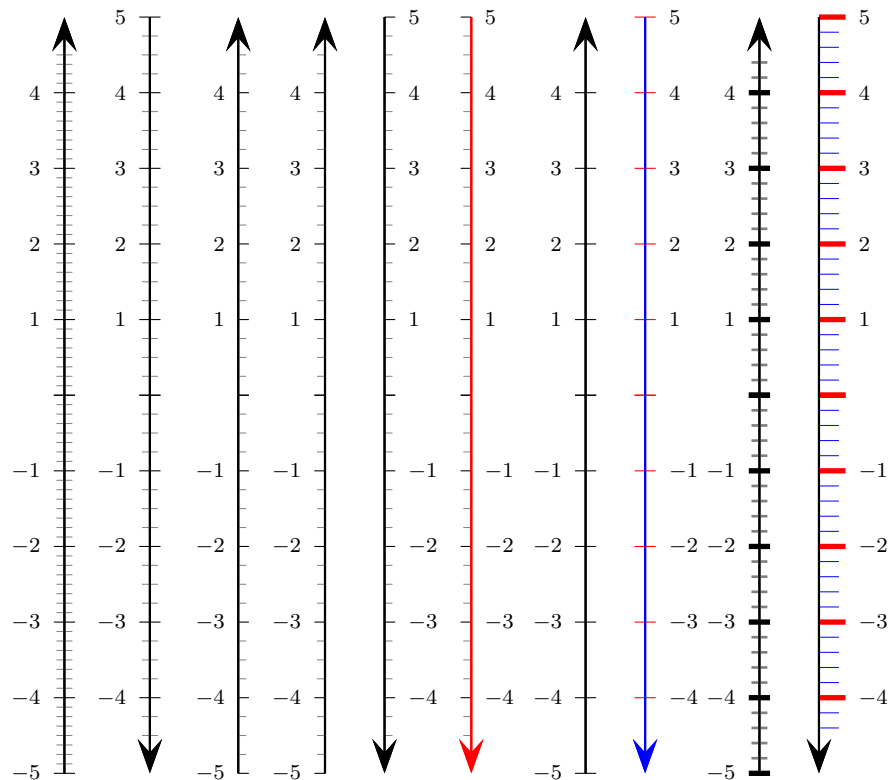
6.26. Option tickwidth and subtickwidth



```

1 \psset{arrowscale=3,arrows=-D>,yAxis=false}
2 \psaxes[subticks=8](0,0)(-5,-1)(5,1)\[1cm]
3 \psaxes[subticks=4,ticksize=-4pt 0,xlabelPos=top](0,0)(5,1)(-5,-1)\[1cm]
4 \psaxes[subticks=4,ticksize=-10pt 0](0,0)(-5,-5)(5,5)\[1cm]
5 \psaxes[subticks=10,ticksize=0 -10pt](0,0)(-5,-5)(5,5)\[1cm]
6 \psaxes[subticks=4,ticksize=0 10pt,xlabelPos=bottom](0,0)(5,5)(-5,-5)\[1cm]
7 \psaxes[subticks=4,ticksize=0 -10pt,xlabelPos=top](0,0)(5,5)(-5,-5)\[0.25cm]
8 \psaxes[subticks=0](0,0)(-5,-5)(5,5)\[1cm]
9 \psaxes[subticks=0,tickcolor=red,linecolor=blue,xlabelPos=top](0,0)(5,5)(-5,-5)\[1cm]
10 \psaxes[subticks=5,tickwidth=2pt,subtickwidth=1pt](0,0)(-5,-5)(5,5)\[1cm]
11 \psaxes[subticks=0,tickcolor=red,xlabelPos=top](0,0)(5,5)(-5,-5)\[1cm]

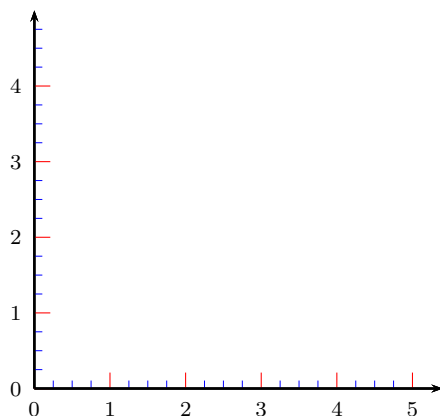
```



```

1 \psset{arrowscale=3,xAxis=false}
2 \psaxes[subticks=8]{->}(0,0)(-5,-5)(5,5)\hspace{2em}
3 \psaxes[subticks=4,ylabelPos=right,ylabelPos=left]{->}(0,0)(5,5)(-5,-5)\hspace{4em}
4 \psaxes[subticks=4,ticks=0 4pt]{->}(0,0)(-5,-5)(5,5)\hspace{3em}
5 \psaxes[subticks=4,ticks=0 -4pt 0]{->}(0,0)(-5,-5)(5,5)\hspace{1em}
6 \psaxes[subticks=4,ticks=0 4pt,ylabelPos=right]{->}(0,0)(5,5)(-5,-5)\hspace{3em}
7 \psaxes[subticks=4,ticks=0 -4pt 0,linewidth=red,ylabelPos=right]{->}(0,0)(5,5)(-5,-5)\hspace{5em}
8 \psaxes[subticks=0]{->}(0,0)(-5,-5)(5,5)\hspace{1em}
9 \psaxes[subticks=0,tickcolor=red,linewidth=blue,ylabelPos=right]{->}(0,0)(5,5)(-5,-5)\hspace{5em}
10 \psaxes[subticks=5,tickwidth=2pt,subtickwidth=1pt]{->}(0,0)(-5,-5)(5,5)\hspace{1em}
11 \psaxes[subticks=5,tickcolor=red,tickwidth=2pt,%
12 ticksize=10pt,subtickcolor=blue,subticksize=0.75,ylabelPos=right]{->}(0,0)(5,5)(-5,-5)

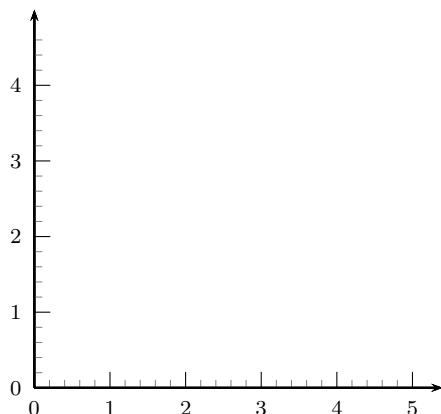
```



```

1 \pspicture(5,5.5)
2 \psaxes[subticks=4,ticks=6pt,subticksize=0.5,%
3 tickcolor=red,subtickcolor=blue]{->}(5.4,5)
4 \endpspicture

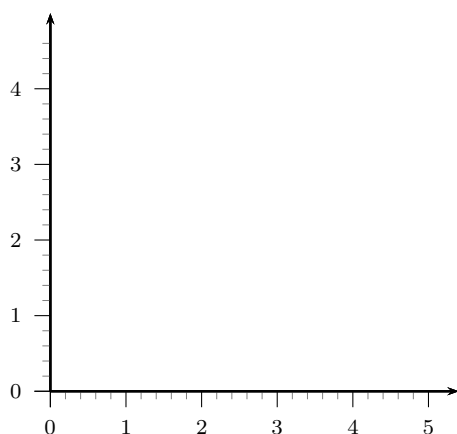
```



```

1 \pspicture(5,5.5)
2   \psaxes[subticks=5,ticksize=0 6pt,subticksize
3     =0.5]{->}(5.4,5)
4 \endpspicture

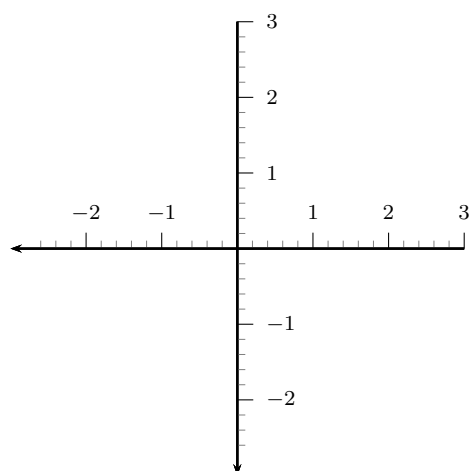
```



```

1 \pspicture(5,5.5)
2   \psaxes[subticks=5,ticksize=-6pt 0,subticksize
3     =0.5]{->}(5.4,5)
4 \endpspicture

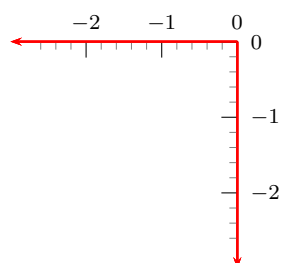
```



```

1 \pspicture(-3,-3)(3,3.5)
2   \psaxes[subticks=5,ticksize=0 6pt,
3     subticksize=0.5]{->}(0,0)(3,3)(-3,-3)
4 \endpspicture

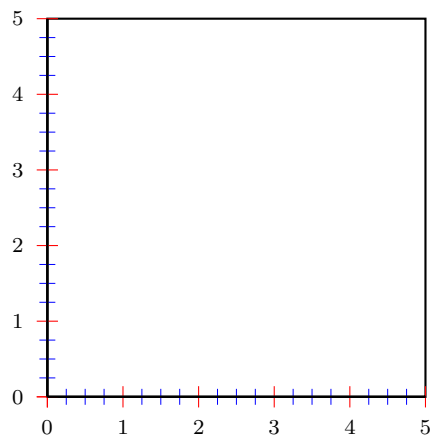
```



```

1 \pspicture(0,0.5)(-3,-3)
2   \psaxes[subticks=5,ticksize=-6pt 0,
3     subticksize=0.5,linecolor=red]{->}(-3,-3)
4 \endpspicture

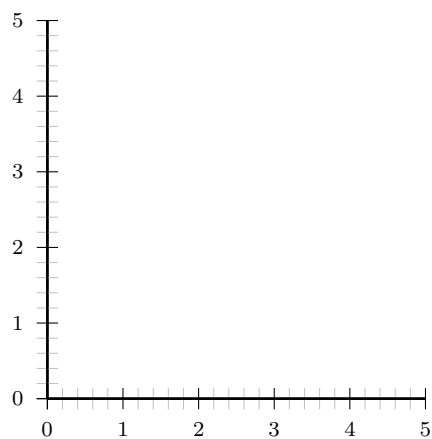
```

```

1 \psset{axesstyle=frame}
2 \pspicture(5,5.5)
3   \psaxes[subticks=4,tickcolor=red,subtickcolor=
4     blue](5,5)
5 \endpspicture

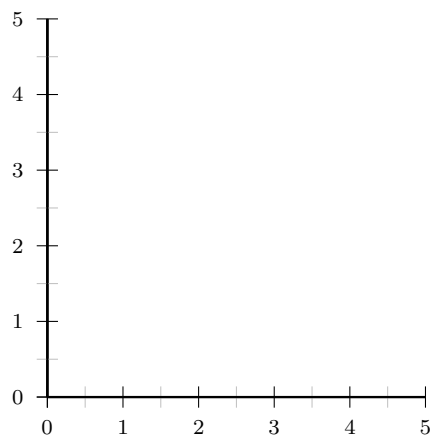
```



```

1 \pspicture(5,5.5)
2   \psaxes[subticks=5,subticks=1,subtickcolor=
3     lightgray](5,5)
4 \endpspicture

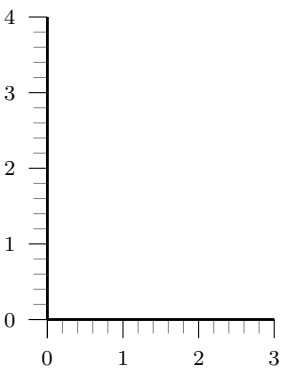
```



```

1 \pspicture(5,5.5)
2   \psaxes[subticks=2,subticks=1,subtickcolor=
3     lightgray](5,5)
4 \endpspicture

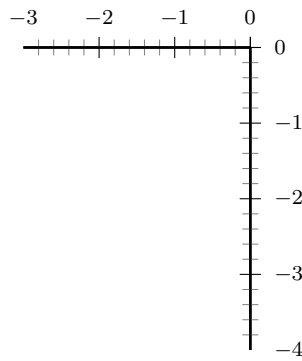
```



```

1 \pspicture(3,4.5)
2   \psaxes[subticks=5,ticks=-7pt 0](3,4)
3 \endpspicture

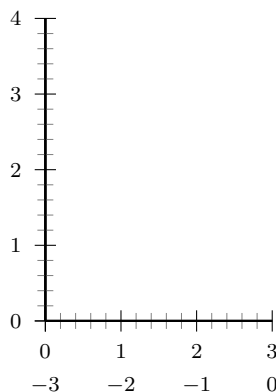
```



```

1 \pspicture(0,1)(-3,-4)
2   \psaxes[subticks=5](-3,-4)
3 \endpspicture

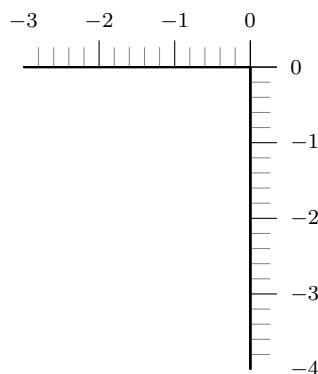
```



```

1 \pspicture(3,4.5)
2   \psaxes[axesstyle=axes,subticks=5](3,4)
3 \endpspicture

```



```

1 \pspicture(0,1)(-3,-4)
2   \psaxes[axesstyle=axes,subticks=5,%
3     ticksize=0 10pt](-3,-4)
4 \endpspicture

```

7. New options for \readdata

By default the macro `\readdata` reads every data record, which could be annoying when you have some text lines at top of your data files or when there are more than 10000 records to read.

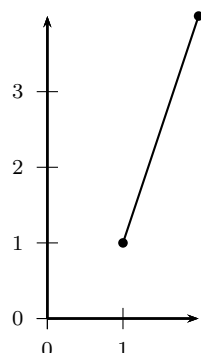
`pst-plot` defines two additional keys `ignoreLines` and `nStep`, which allows you to ignore preceeding lines, e.g. `ignoreLines=2`, or to read only a selected part of the data records, e.g. `nStep=10`, only every 10th record is saved.

```

1 \readdata[ignoreLines=2]{\dataA}{stressrawdata.data}
2 \readdata[nStep=10]{\dataA}{stressrawdata.data}

```

The default value for `ignoreLines` is 0 and for `nStep` is 1. the following data file has two text lines which shall be ignored by the `\readdata` macro:



```

1 \begin{filecontents*}{pstricks-add-data9.data}
2 some nonsense in this line ---time forcex forcey
3 0 0.2
4 1 1
5 2 4
6 \end{filecontents*}
7 \readdata[ignoreLines=2]{\data}{pstricks-add-data9.data}
8 \pspicture(2,4)
9   \listplot[showpoints]{\data}
10  \psaxes{->}(2,4)
11 \endpspicture

```

8. New options for \listplot

By default the plot macros \dataplot, \fileplot and \listplot plot every data record. There are now additional keys nStep, nStart, nEnd, and xStep, xStart, xEnd, which allows to plot only a selected part of the data records, e.g. nStep=10. These "n" options mark the number of the record to be plotted (0, 1, 2, ...) and the "x" ones the x-values of the data records.

The new options are only available for the \listplot macro, which is not a real limitation, because all data records can be read from a file with the \readdata macro (see example files or [?]):

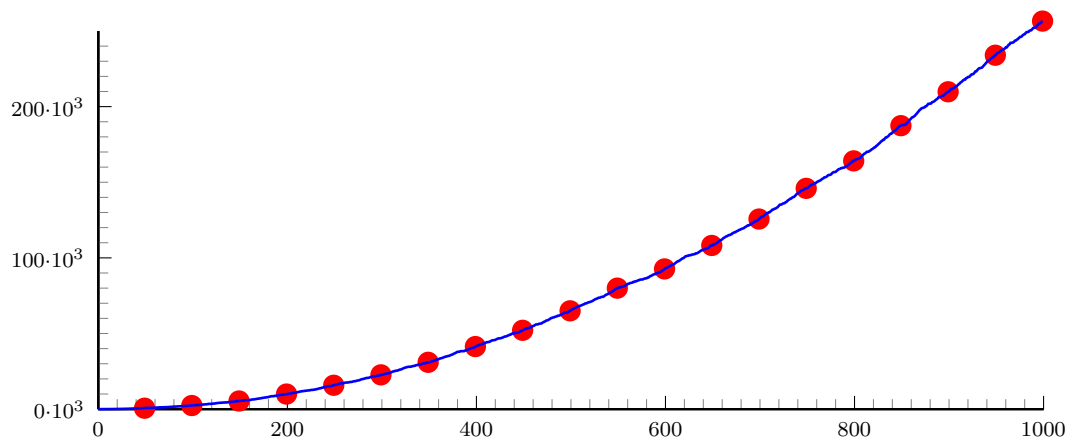
```
\readdata[nStep=10]{\data}{/home/voss/data/data1.data}
```

The use nStep and xStep options only make real sense when also using the option plotstyle=dots. Otherwise the coordinates are connected by a line as usual. Also the xStep option needs increasing x values. Note that nStep can be used for \readdata and for \listplot. If used in both macros then the effect is multiplied, e.g. \readdata with nStep=5 and \listplot with nStep=10 means, that only every 50th data record is read and plotted.

When both, x/yStart/End are defined then the values are also compared with both values.

8.1. Options nStep, xStep, and yStep

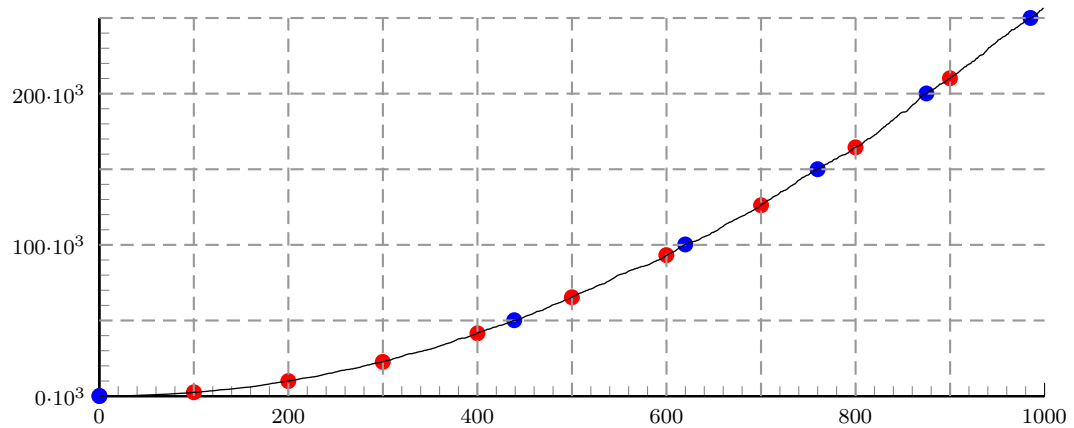
The datafile data.data contains 1000 data records. The thin blue line is the plot of all records with the plotstyle option curve.



```

1 \readdata{\data}{data.data}
2 \psset{xunit=12.5cm,yunit=0.2mm}
3 \begin{pspicture}(-0.080,-30)(1,270)
4 \pstScalePoints(1,1){1000 div}{1000 div}
5 \psaxes[Dx=200,dx=2.5cm,Dy=100,ticksize=0 5pt,tickstyle=inner,
6   subticks=10,ylabelFactor=\cdot10^3,dy=2cm](0,0)(1,250)
7 \listplot[nStep=50,linewidth=3pt,linecolor=red,plotstyle=dots]{\data}
8 \listplot[linewidth=1pt,linecolor=blue]{\data}
9 \end{pspicture}

```

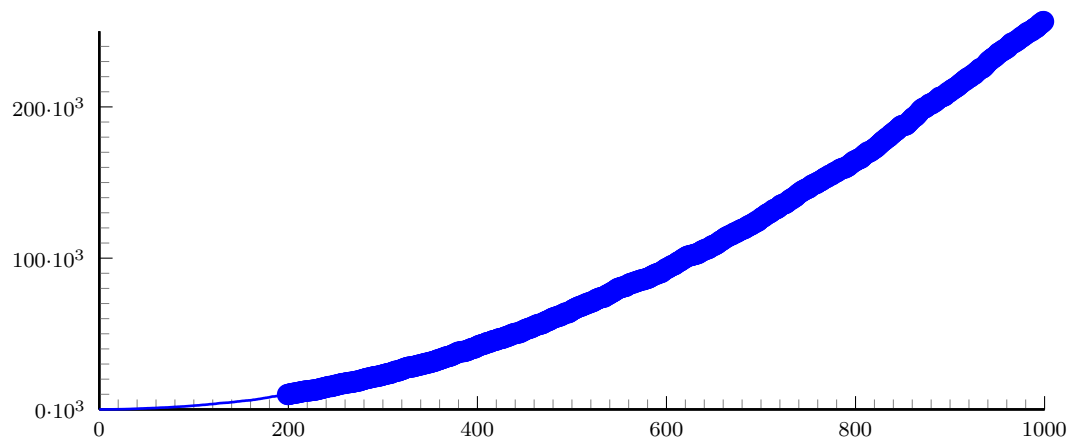


```

1 \readdata{\data}{data.data}
2 \psset{xunit=12.5cm,yunit=0.2mm}
3 \begin{pspicture}(-0.080,-30)(1,270)
4 \pstScalePoints(1,1){1000 div}{1000 div}
5 \psaxes[Dx=200,dx=2.5cm,Dy=100,ticksize=0 5pt,tickstyle=inner,
6   subticks=10,ylabelFactor=\cdot10^3,dy=2cm](0,0)(1,250)
7 \listplot[xStep=100,linewidth=2pt,linecolor=red,plotstyle=dots]{\data}
8 \multido{\rA=0.1+0.1}{9}{%
9   \psline[linecolor=black!40,linestyle=dashed](\rA,0)(\rA,250)}
10 \listplot[yStep=50000,linewidth=2pt,linecolor=blue,plotstyle=dots]{\data}
11 \multido{\nA=50+50}{5}{%
12   \psline[linecolor=black!40,linestyle=dashed](0,\nA)(1,\nA)}
13 \listplot[linewidth=0.5pt]{\data}
14 \end{pspicture}

```

8.2. Options nStart and xStart

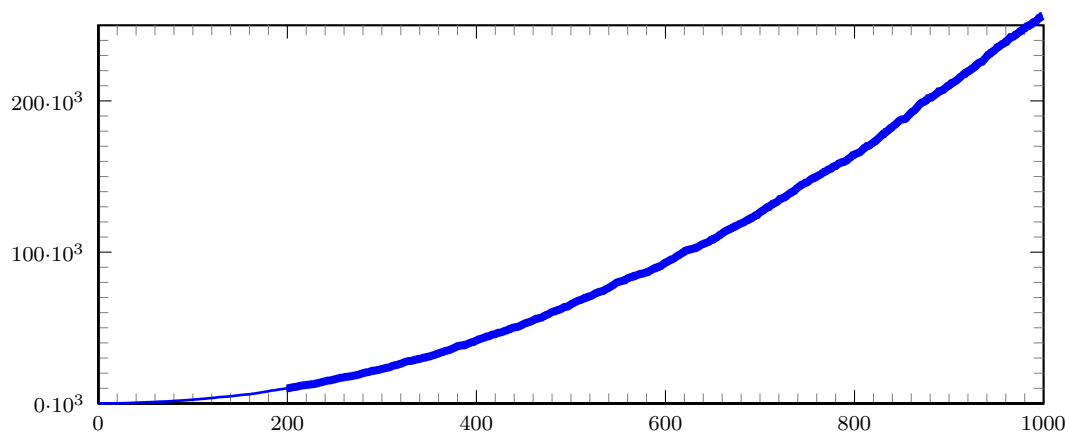


```

1 \readdata{\data}{data.data}
2 \psset{xunit=12.5cm,yunit=0.2mm}
3 \begin{pspicture}(-0.080,-30)(1,270)
4 \pstScalePoints(1,1){1000 div}{1000 div}
5 \psaxes[Dx=200,dx=2.5cm,Dy=100,ticks=0 5pt,tickstyle=inner,
6   subticks=10,ylabelFactor=\cdot10^3,dy=2cm](0,0)(1,250)
7 \listplot[nStart=200,linewidth=3pt,
8   linecolor=blue,plotstyle=dots]{\data}
9 \listplot[linewidth=1pt,linecolor=blue]{\data}
10 \end{pspicture}

```

8.3. Options nEnd and xEnd

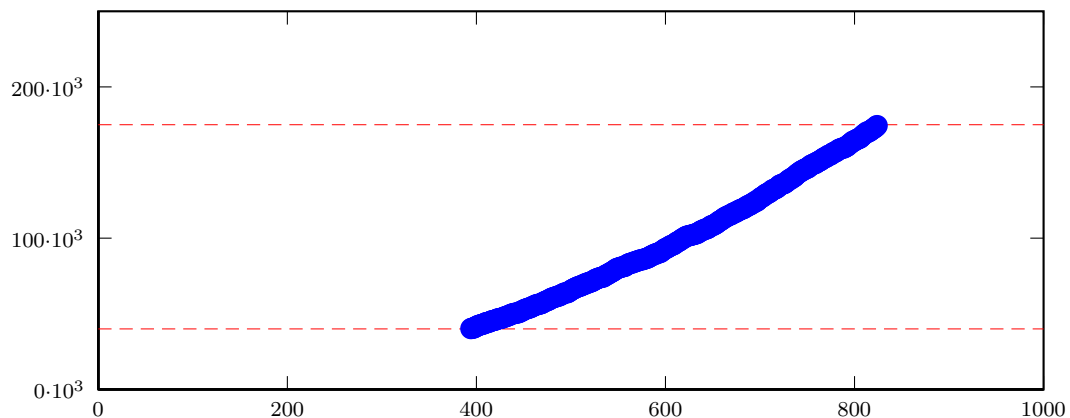


```

1 \readdata{\data}{data.data}
2 \psset{xunit=12.5cm,yunit=0.2mm}
3 \begin{pspicture}(-0.080,-30)(1,270)
4 \pstScalePoints(1,1){1000 div}{1000 div}
5 \psaxes[axesstyle=frame,Dx=200,dx=2.5cm,Dy=100,ticksiz=0 5pt,tickstyle=inner,
6   subticks=10,ylabelFactor=\cdot10^3,dy=2cm](0,0)(1,250)
7 \listplot[nStart=200,linewidth=3pt,
8   linecolor=blue]{\data}
9 \listplot[linewidth=1pt,linecolor=blue]{\data}
10 \end{pspicture}

```

8.4. Options yStart and yEnd



```

1 \readdata{\data}{data.data}
2 \psset{xunit=12.5cm,yunit=0.2mm}
3 \begin{pspicture}(-0.080,-30)(1,270)
4 \pstScalePoints(1,1){1000 div}{1000 div}
5 \psaxes[axesstyle=frame,Dx=200,dx=2.5cm,Dy=100,ticksiz=0 5pt,tickstyle=inner,
6   ylabelFactor=\cdot 10^3,dy=2cm](0,0)(1,250)
7 \psset{linewidth=0.1pt,linestyle=dashed,linecolor=red}
8 \psline(0,40)(1,40)
9 \psline(0,175)(1,175)
10 \listplot[yStart=40000, yEnd=175000,linewidth=3pt,linecolor=blue,plotstyle=
   dots]{\data}
11 \end{pspicture}

```

8.5. Options plotNo, plotNoX, and plotNoMax

By default the plot macros expect $x|y$ data records, but when having data files with multiple values for y , like:

```

x y1 y2 y3 y4 ... yMax
x y1 y2 y3 y4 ... yMax
...

```

you can select the y value which should be plotted. The option `plotNo` marks the plotted value (default 1) and the option `plotNoMax` tells `pst-plot` how many y values are present. There are no real restrictions in the maximum number for `plotNoMax`.

We have the following data file:

```

[% file data.data
0  0  3.375  0.0625
10  5.375  7.1875  4.5
20  7.1875  8.375  6.25
30  5.75  7.75  6.6875
40  2.1875  5.75  5.9375
50  -1.9375  2.1875  4.3125
60  -5.125  -1.8125  0.875

```

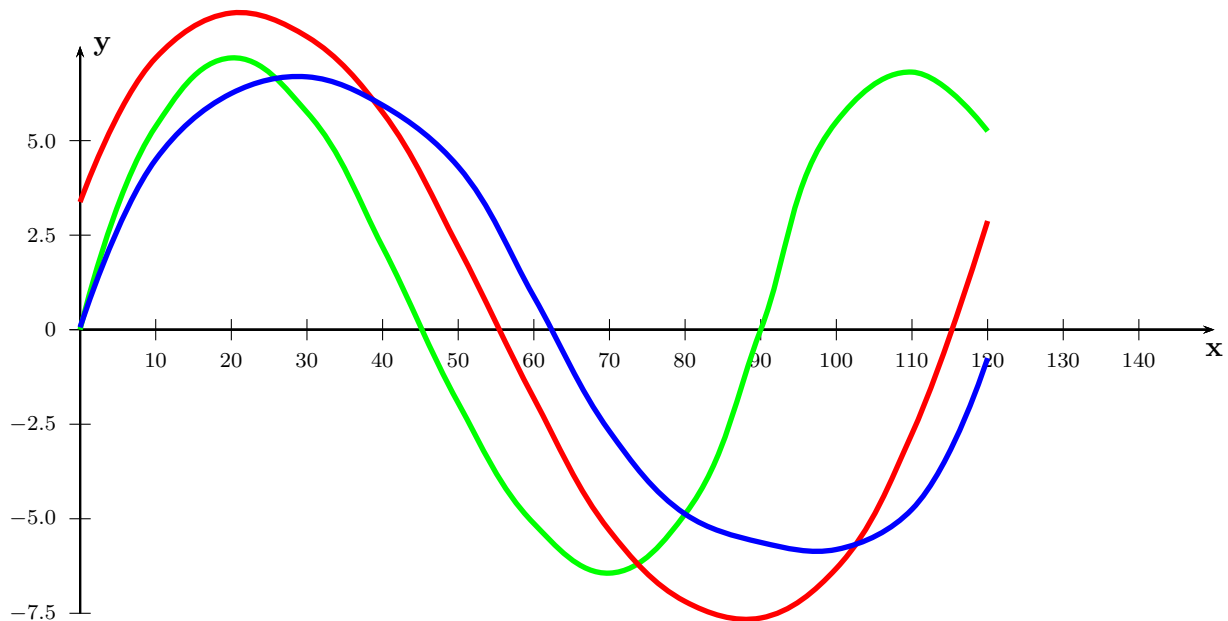


```

70 -6.4375 -5.3125 -2.6875
80 -4.875 -7.1875 -4.875
90 0 -7.625 -5.625
100 5.5 -6.3125 -5.8125
110 6.8125 -2.75 -4.75
120 5.25 2.875 -0.75
]%

```

which holds data records for multiple plots (x y_1 y_2 y_3). This can be plotted without any modification to the data file:



```

1 \readdata\Data{dataMul.data}
2 \psset{xunit=0.1cm, yunit=0.5cm,lly=-0.5cm}
3 \begin{pspicture}(0,-7.5)(150,10)
4 \psaxes[Dx=10,Dy=2.5]{->}(0,0)(0,-7.5)(150,7.5)[$\mathbf{x}$,-90][$\mathbf{y}$,0]
5 \psset{linewidth=2pt,plotstyle=curve}
6 \listplot[linecolor=green,plotNo=1,plotNoMax=3]{\Data}
7 \listplot[linecolor=red,plotNo=2,plotNoMax=3]{\Data}
8 \listplot[linecolor=blue,plotNo=3,plotNoMax=3]{\Data}
9 \end{pspicture}

```

It is also possible to select another column for the x -value. Suppose we have a data base with records like x y x y , then it is by default a record with one x value and four possible y values. We still have to define `plotNoMax=4`. However, it is possible to select the forth value as new x value by setting `plotNoX=4` (it is preset to 1). Then the forth value is taken as x . The example uses the the following data set.

```

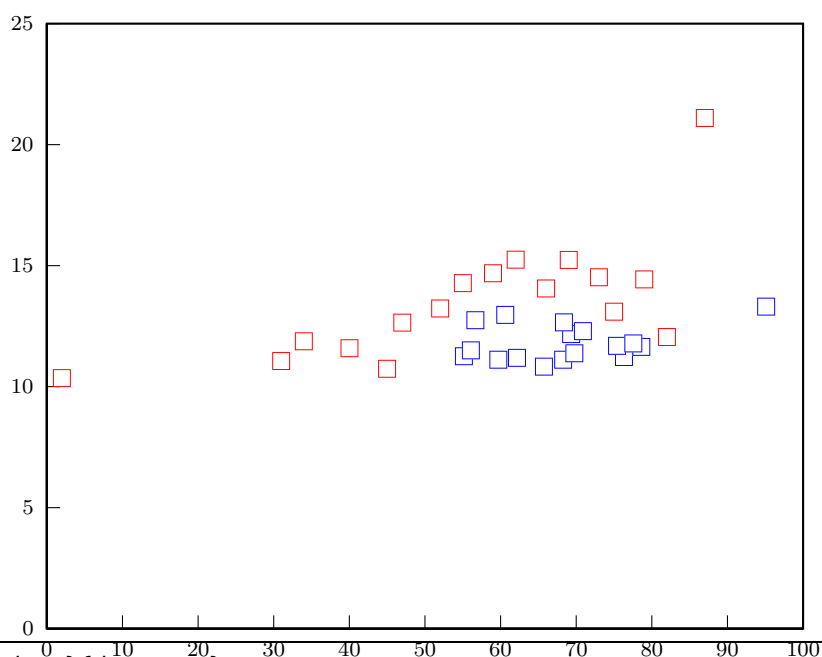
% X1 X2 Y1 Y2
2 55.1500 10.35 11.26
31 59.7167 11.06 11.11

```

```

34 65.7167 11.87 10.83
40 62.1833 11.59 11.19
45 56.0500 10.74 11.50
47 68.2667 12.65 11.11
52 69.7500 13.23 11.38
55 76.3333 14.28 11.22
59 75.4000 14.69 11.69
62 78.6000 15.25 11.64
66 69.3167 14.06 12.17
69 77.5500 15.24 11.79
73 70.8833 14.52 12.29
75 60.6167 13.10 12.97
79 68.3833 14.43 12.66
82 56.6833 12.05 12.75
87 95.1333 21.10 13.31

```



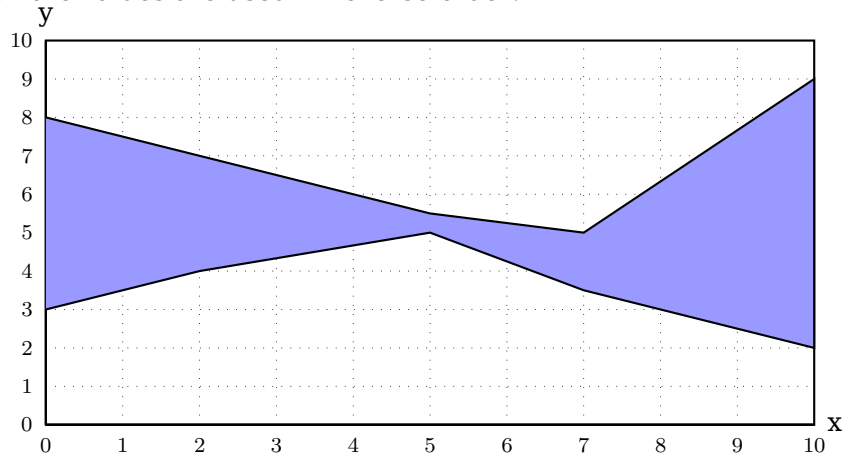
```

1 \readdata{\data}{demo.txt}
2 \psset{xAxisLabel={},yAxisLabel={},llx=-5mm}
3 \begin{psgraph}[axesstyle=frame,Dy=5,Dx=10,ticks=5pt 0](0,0)(100,25){10cm}{8
  cm}
4 \psset{dotstyle=square,dotscale=1.5,linewidth=1.5pt}
5 \listplot[plotNoMax=3,plotNo=2,linecolor=red,plotstyle=dots]{\data}
6 \listplot[plotNoMax=3,plotNoX=2,plotNo=3,linecolor=blue,plotstyle=dots]{\data}
7 \end{psgraph}

```

8.6. Option changeOrder

It is only possible to fill the region between two listplots with `\pscustom` if one of them has the values in reverse order. Otherwise we do not get a closed path. With the option `ChangeOrder` the values are used in reverse order:



```

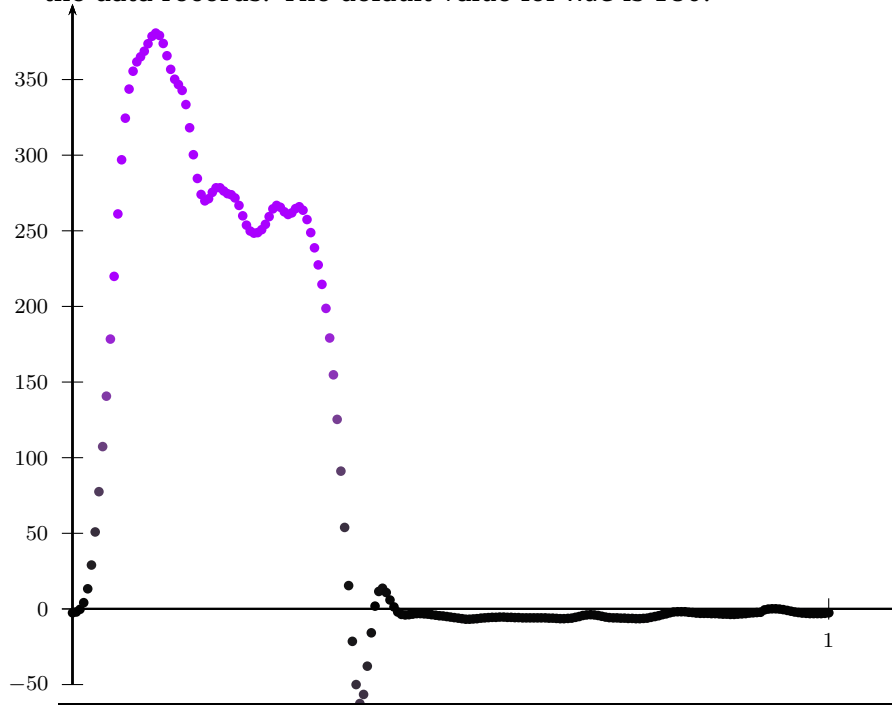
1 \begin{filecontents*}{test.data}
2   0 3 8
3   2 4 7
4   5 5 5.5
5   7 3.5 5
6   10 2 9
7 \end{filecontents*}
8 \psset{lly=-.5cm}
9 \begin{psgraph}[axesstyle=frame,ticklinestyle=dotted,ticks=0 10](0,0)(10,10)
10   {4in}{2in}%
11 \readdata{\data}{test.data}%
12 \pscustom[fillstyle=solid,fillcolor=blue!40]{%
13   \listplot[plotNo=2,plotNoMax=2]{\data}%
14   \listplot[plotNo=1,plotNoMax=2,ChangeOrder]{\data}}
15 \end{psgraph}

```

9. New plot styles

9.1. Plot style `colordot` and option `Hue`

The plotted dots can be colored with the HSB color model, where Hue is set by an angle (0...360) and the values of Saturation and Brightness are set by the relative y value of the data records. The default value for Hue is 180.



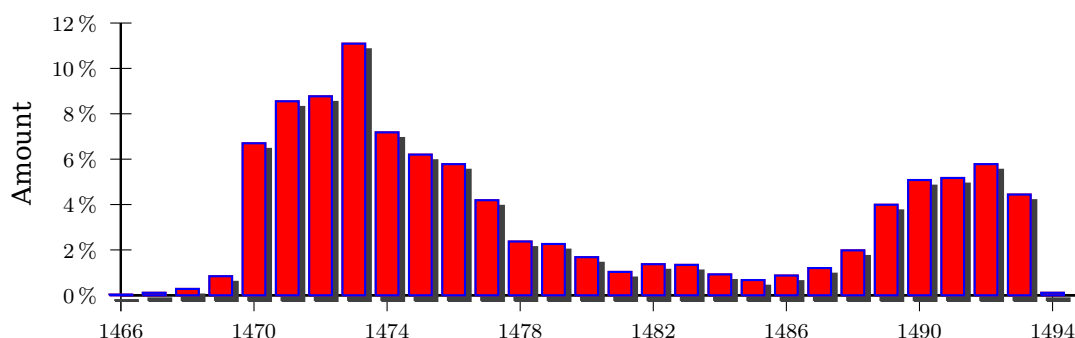
```

1 \readdata{\data}{data3.data}
2 \psset{xunit=10,yunit=0.02}
3 \begin{pspicture}(0,-50)(1.1,400)
4   \psaxes[dy=1cm,Dy=50]{->}(0,0)(0,-50)(1.1,400)
5   \listplot[Hue=280,plotstyle=colordots]{\data}
6 \end{pspicture}

```

9.2. Plot style bar and option barwidth

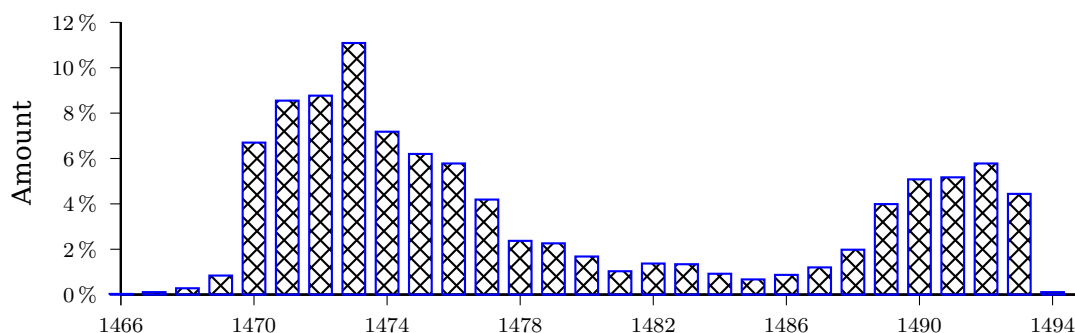
This option allows you to draw bars for the data records. The width of the bars is controlled by the option `barwidth`, which is set by default to value of 0.25cm, which is the total width.



```

1 \psset{xunit=.44cm,yunit=.3cm}
2 \begin{pspicture}(-2,-3)(29,13)
3   \psaxes[axesstyle=axes,0x=1466,0y=0,Dx=4,Dy=2,xticks=-6pt 0,
4     ylabelFactor={\,\,\%}]{-}(29,12)
5   \listplot[shadow=true,linecolor=blue,plotstyle=bar,barwidth=0.3cm,
6     fillcolor=red,fillstyle=solid]{\barData}
7   \rput{90}(-3,6.25){Amount}
8 \end{pspicture}

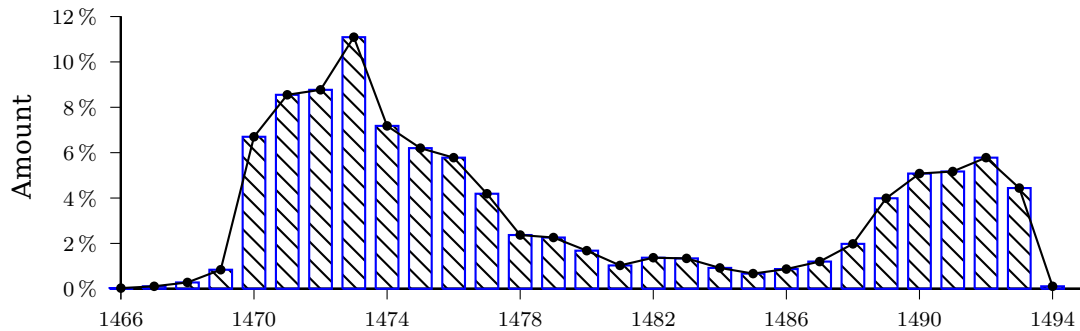
```



```

1 \psset{xunit=.44cm,yunit=.3cm}
2 \begin{pspicture}(-2,-3)(29,13)
3   \psaxes[axesstyle=axes,0x=1466,0y=0,Dx=4,Dy=2,ticks=-4pt 0,
4     ylabelFactor={\,\,\%}]{-}(29,12)
5   \listplot[linecolor=blue,plotstyle=bar,barwidth=0.3cm,
6     fillcolor=red,fillstyle=crosshatch]{\barData}
7   \rput{90}(-3,6.25){Amount}
8 \end{pspicture}

```



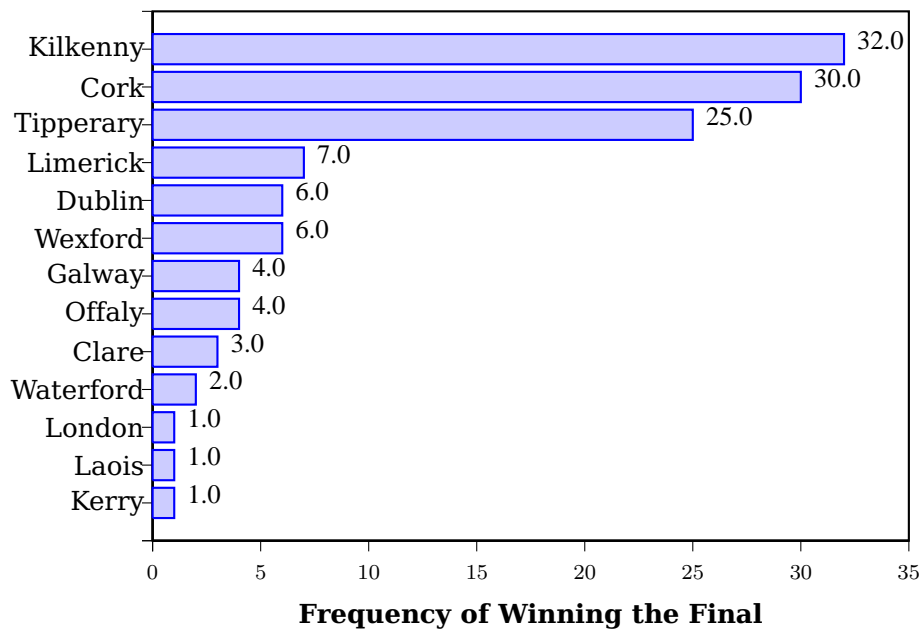
```

1 \psset{xunit=.44cm,yunit=.3cm}
2 \begin{pspicture}(-2,-3)(29,13)
3   \psaxes[axesstyle=axes,0x=1466,0y=0,Dx=4,Dy=2,ticks=-4pt 0,
4     ylabelFactor={\,%}]{-}(29,12)
5   \listplot[linecolor=blue,plotstyle=bar,barwidth=0.3cm,
6     fillcolor=red,fillstyle=vlines]{\barData}
7   \listplot[showpoints=true]{\barData}
8   \rput{90}(-3,6.25){Amount}
9 \end{pspicture}

```

9.3. Plot style ybar

With the setting `plotstyle=ybar` the graph is set with horizontal bars instead of vertical. For yLabels see section ??.



```

1 \savedata{\data}[1 1 1 2 1 3 2 4 3 5 4 6 4 7 6 8 6 9 7 10 25 11 30 12 32 13]
2
3 \psset{llx=-1.5cm,lly=-1.5cm,xAxisLabel=\textbf{Frequency of Winning the Final}
4   },

```

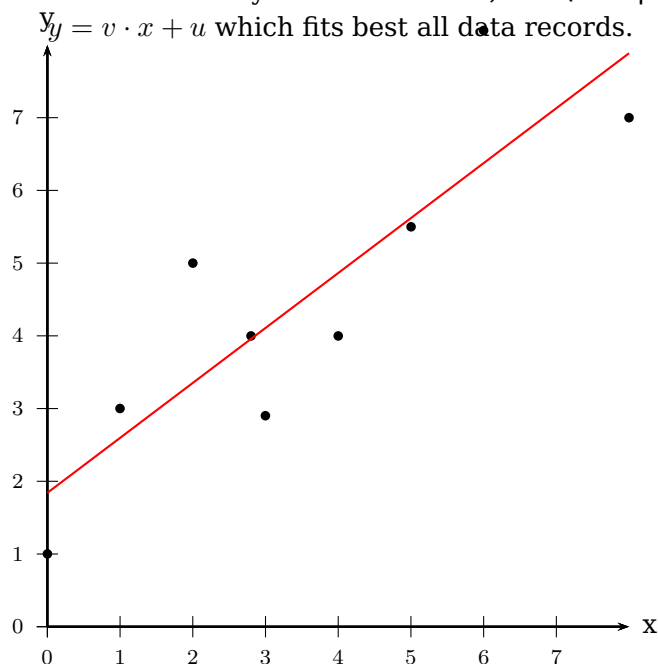
```

4   xAxisLabelPos={c,-1cm},yAxisLabel=,yLabels={,Kerry,Laois,London,Waterford,
    Clare,Offaly,
5   Galway,Wexford,Dublin,Limerick,Tipperary,Cork,Kilkenny}}
6   \begin{psgraph}[axesstyle=frame,labels=x,ticks=-4pt 0,Dx=5](0,0)(35,14){10cm
    }{7cm}
7   \listplot[plotstyle=ybar,fillcolor=blue!20,linecolor=blue,barwidth=4mm,
    fillstyle=solid]{\data}
8   \listplot[plotstyle=xvalues,labelsep=5pt]{\data}
9   \end{psgraph}

```

9.4. Plotstyle LSM

With the setting `plotstyle=LSM` (**L**east **S**quare **M**ethod) the data records are not printed in the usual way as dots or a line, the `\listplot` macro calculates the values for a line $y = v \cdot x + u$ which fits best all data records.

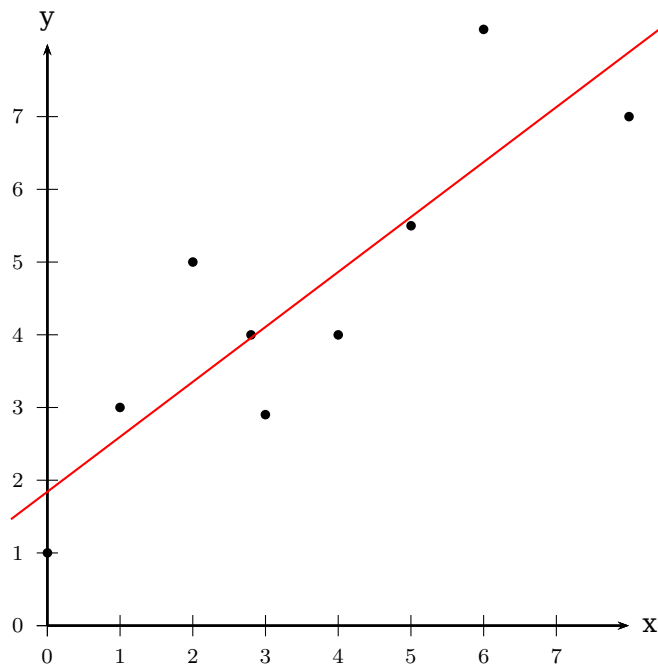


```

1   \begin{filecontents*}{LSM.data}
2   0 1 1 3 2.8 4 3 2.9 2 5 4 4 5 5.5 6 8.2 8 7
3   \end{filecontents*}
4   \psset{lly=-.5cm}
5   \readdata{\data}{LSM.data}
6   \begin{psgraph}[arrows=->](0,0)(0,0)(8,8){.5\textwidth}{!}
7   \listplot[plotstyle=dots]{\data}
8   \listplot[plotstyle=LSM,linecolor=red]{\data}
9   \end{psgraph}

```

The macro looks for the lowest and biggest x-value and draws the line for this interval. It is possible to pass other values to the macro by setting the `xStart` and/or `xEnd` options. They are preset with an empty value `{}`.



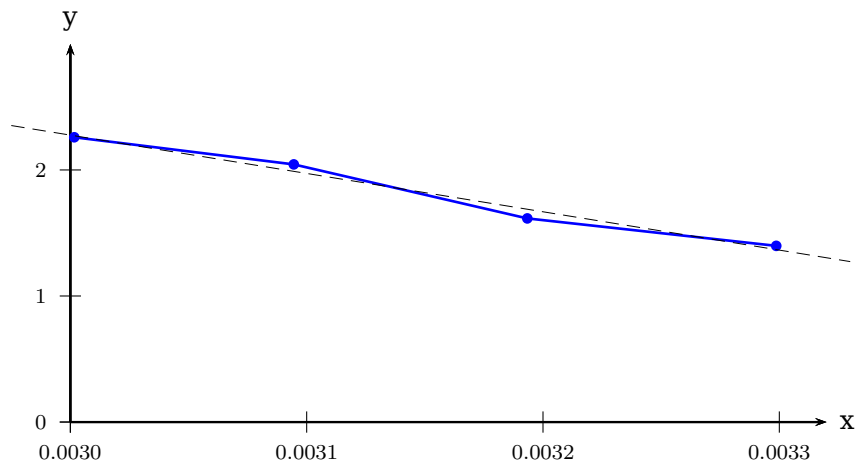
$$y = 0.755679x + 1.84105$$

```

1 \begin{filecontents*}{LSM.data}
2 0 1 1 3 2.8 4 3 2.9 2 5 4 4 5 5.5 6 8.2 8 7
3 \end{filecontents*}
4 \readdata{\data}{LSM.data}
5 \psset{lly=-1.75cm}
6 \begin{psgraph}[arrows=->](0,0)(0,0)(8,8){.5\textwidth}{!}
7   \listplot[plotstyle=dots]{\data}
8   \listplot[PstDebug,plotstyle=LSM,xStart=-0.5,xEnd=8.5,linecolor=red]{\data}
9 \end{psgraph}

```

With PstDebug one gets the equation $y = v \cdot x + u$ printed, beginning at the position (0|-50pt). This cannot be changed, because it is only for some kind of debugging. Pay attention for the correct xStart and xEnd values, when you use the \pstScalePoints Macro. In the following example we use an x-interval from 0 to 3 to plot the values; first we subtract 0.003 from all x-values and then scale them with 10000. This is not taken into account for the xStart and xEnd values.



$$y = -0.162184x + 2.27634$$

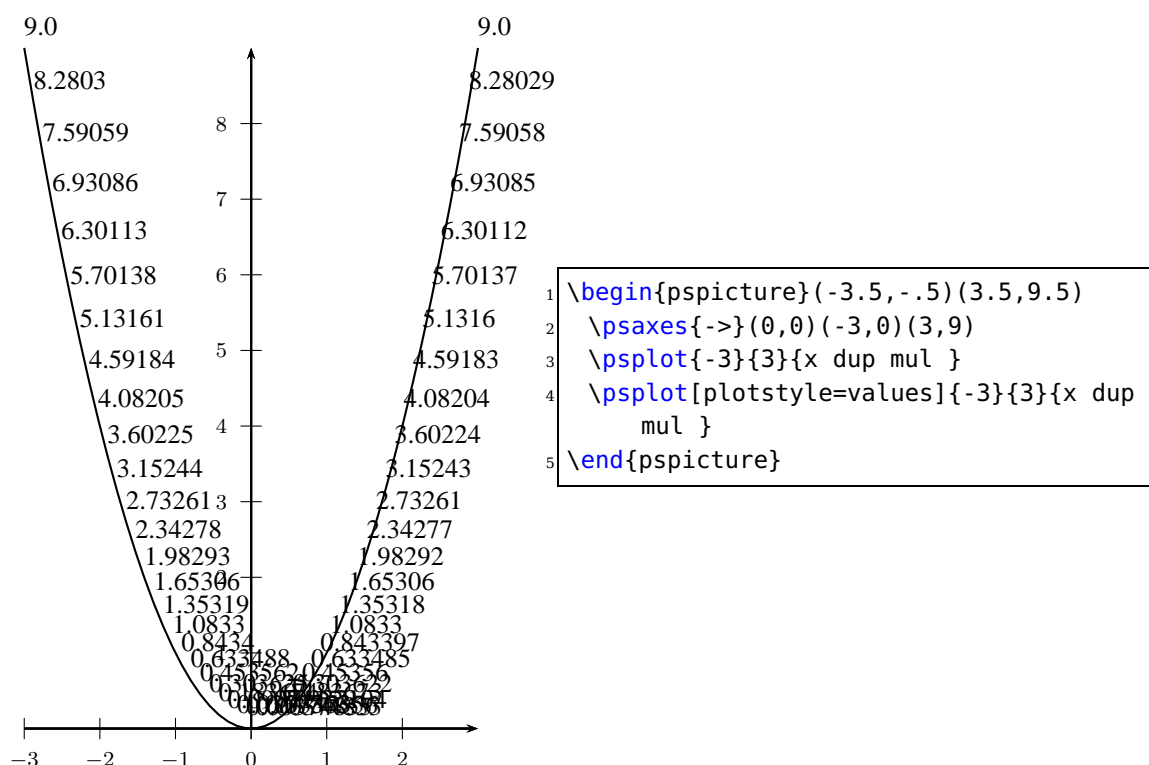
```

1 \begin{filecontents*}{LSM.data}
2 0.003298697 1.397785583
3 0.003193358 1.615489564
4 0.003094538 2.044019006
5 0.003001651 2.259240127
6 \end{filecontents*}
7 \readdata{\data}{LSM.data}
8 \pstScalePoints(10000,1){ 0.003 sub }{}
9 \psset{ll\y=-1.75cm}
10 \psgraph[arrows=->,0x=0.0030,Dx=0.0001,dx=\psxunit](0,0)(3.2,3){10cm}{5cm}
11 \listplot[showpoints=true,linewidth=1pt,linecolor=blue]{\data}
12 \listplot[PstDebug=1,plotstyle=LSM,linewidth=0.1pt,linestyle=dashed,%
13 xStart=-0.25,xEnd=3.3]{\data}
14 \endpsgraph

```

9.5. Plotstyles values and values*

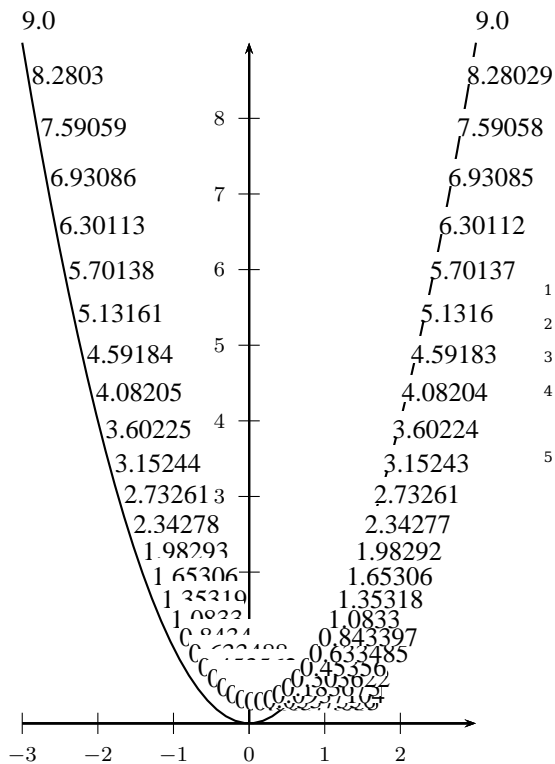
Instead of plotting the curve with the setting `plotstyle=values` the y -values are printed at the current point.



The possible optional arguments are `PSfont,valuewidth, fontscale`, and `decimals`. The default setting is:

```
\psset[pst-plot]{PSfont=Times-Roman,fontscale=10,valuewidth=10,decimals=-1}
```

The optional argument `rot` from the base package `pstricks` is also taken into account. With the star version `plotstyle=values*` the box of the printed value isn't transparent, everything behind this box is not seen.



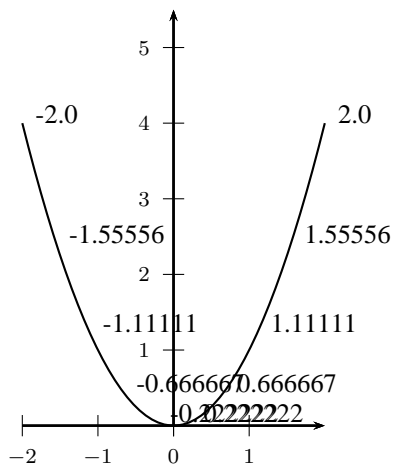
```

1 \begin{pspicture}(-3.5,-.5)(3.5,9.5)
2   \psaxes{->}(0,0)(-3,0)(3,9)
3   \psplot{-3}{3}{x dup mul }
4   \psplot[plotstyle=values*]{-3}{3}{x dup
5     mul }
6 \end{pspicture}

```

9.6. Plotstyles xvalues and xvalues*

This is similar to the options values, except that it plots the x -values instead of the y -values. This may be useful when also using the plotstyle ybar (see Section 9.3 on page 68).



```

1 \begin{pspicture}(-2.5,-.5)(2.5,5.5)
2   \psaxes{->}(0,0)(-2,0)(2,5.5)
3   \psplot{-2}{2}{x dup mul }
4   \psplot[plotstyle=xvalues,
5     plotpoints=10]{-2}{2}{x dup mul }
6 \end{pspicture}

```

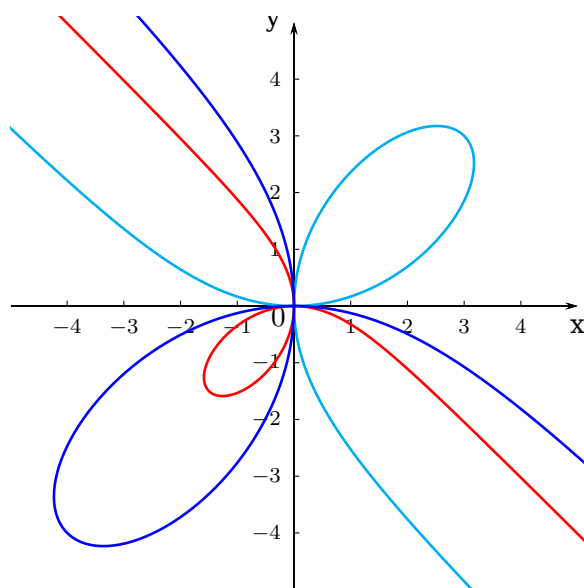
10. Polar plots

With the option `polarplot=false|true` it is possible to use `\psplot` in polar mode:

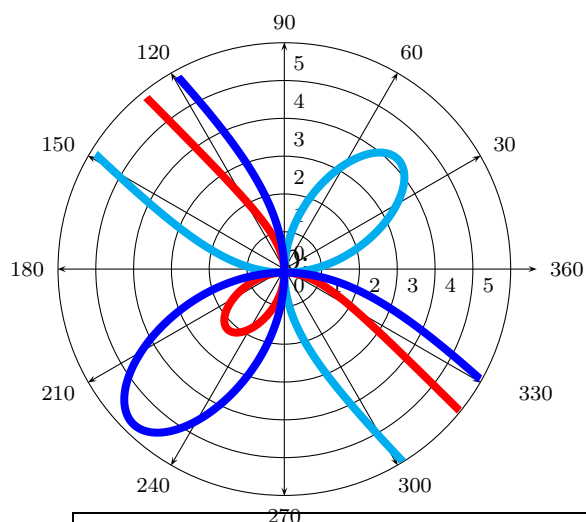
```
\psplot [polarplot=true,...] {<start angle>}{<end angle>}%
[PS command] {<r(alpha)>}
```

The equation in PostScript code is interpreted as a function $r = f(\alpha)$, e.g. for the circle with radius 1 as $r = \sqrt{\sin^2 x + \cos^2 x}$, or $r = a * \frac{\sin(x) * \cos(x)}{(\sin(x)^3 + \cos(x)^3)}$ for the following examples:

```
x sin dup mul x cos dup mul add sqrt
```



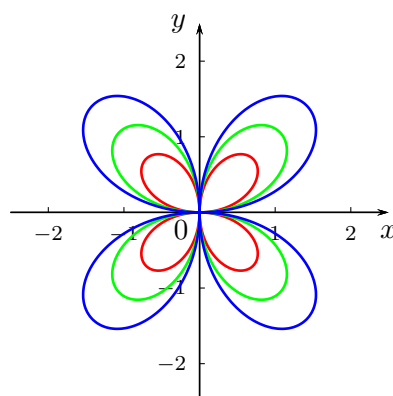
```
1 \psset{plotpoints=200,unit=0.75}
2 \begin{pspicture*(-5,-5)(5.1,5.1)}
3   \psaxes[arrowlength=1.75,ticks=2pt,labelFontSize=\scriptstyle,
4     linewidth=0.2mm]{->}(0,0)(-4.99,-4.99)(5,5)[x,-90][y,180]
5   \rput[Br](-.15,-.35){$0$} \psset{linewidth=.35mm,polarplot}
6   \psplot[linecolor=red]{140}{310}{3 neg x sin mul x cos mul x sin 3 exp x cos
7     3 exp add div}
8   \psplot[linecolor=cyan]{140}{310}{6 x sin mul x cos mul x sin 3 exp x cos 3
9     exp add div}
10  \psplot[linecolor=blue,algebraic=true]{2.44}{5.41}{-8*sin(x)*cos(x)/(sin(x)
11    ^3+cos(x)^3)}
12 \end{pspicture}
```



```

1 \psset{unit=0.5cm}
2 \begin{pspicture}(-6,-6)(6,6)
3 \psaxes[axesstyle=polar,labelFontSize=\scriptstyle,linewidth=0.2mm]{->}(6,6)
4 \psset{linewidth=3pt,polarplot,plotpoints=500,plotstyle=curve}
5 \psclip{\pscircle[linestyle=none]{6}}
6 \psplot[linecolor=red]{140}{310}{3 neg x sin mul x cos mul x sin 3 exp x cos
7   3 exp add div}
8 \psplot[linecolor=cyan]{140}{310}{6 x sin mul x cos mul x sin 3 exp x cos 3
9   exp add div}
10 \psplot[linecolor=blue,algebraic=true]{2.44}{5.41}{-8*sin(x)*cos(x)/(sin(x)
11   ^3+cos(x)^3)}
12 \endpsclip
13 \end{pspicture}

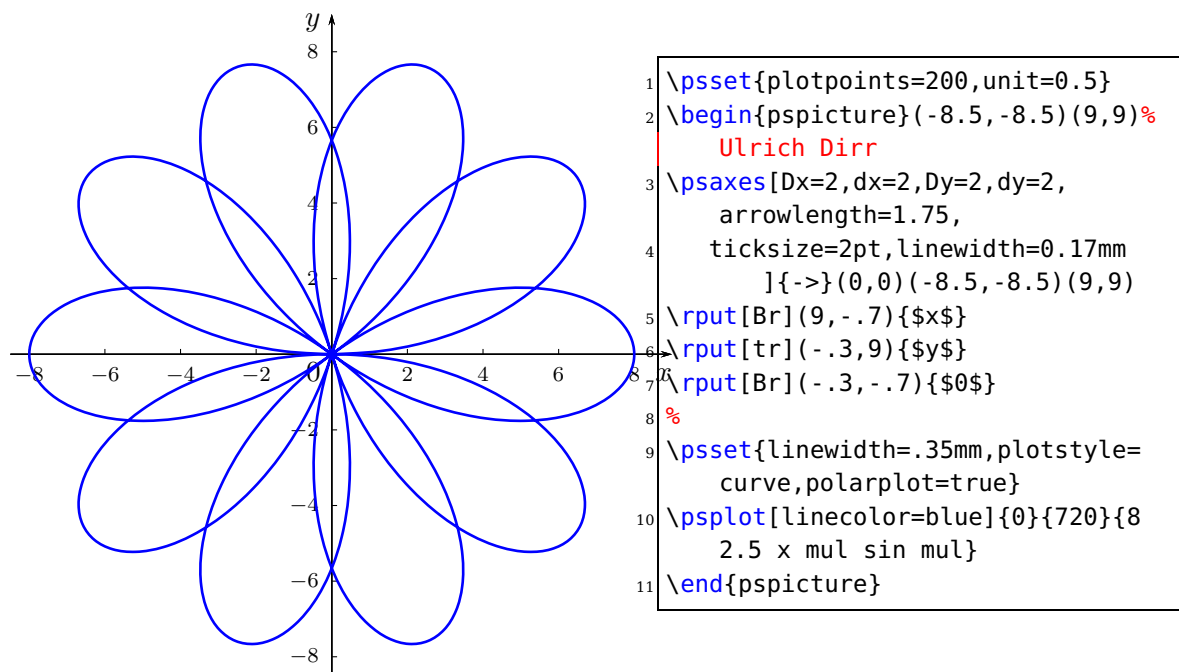
```



```

1 \psset{plotpoints=200,unit=1}
2 \begin{pspicture}(-2.5,-2.5)(2.5,2.5)% Ulrich Dirr
3 \psaxes[arrowlength=1.75,%
4   ticksize=2pt,linewidth=0.17mm]{->}%
5   (0,0)(-2.5,-2.5)(2.5,2.5)[$x$,-90][$y$,180]
6 \rput[Br](-.15,-.35){$0$}
7 \psset{linewidth=.35mm,plotstyle=curve,polarplot=
8   true}
9 \psplot[linecolor=red]{0}{360}{x cos 2 mul x sin
10   mul}
11 \psplot[linecolor=green]{0}{360}{x cos 3 mul x
12   sin mul}
13 \psplot[linecolor=blue]{0}{360}{x cos 4 mul x sin
14   mul}
15 \end{pspicture}

```



11. List of all optional arguments for pst-plot

Key	Type	Default
ignoreLines	ordinary	0
Hue	ordinary	180
barwidth	ordinary	0.25cm
IQLfactor	ordinary	[none]
plotstyle	ordinary	line
plotpoints	ordinary	50
yMaxValue	ordinary	-1.0
PSfont	ordinary	Times-Roman
valuewidth	ordinary	10
fontscale	ordinary	10
decimals	ordinary	-1
xyValues	boolean	true
ChangeOrder	boolean	true
polarplot	boolean	true
VarStep	boolean	true
PlotDerivative	ordinary	[none]
VarStepEpsilon	ordinary	[none]
method	ordinary	[none]
ticks	ordinary	all
labels	ordinary	all
Ox	ordinary	0
Dx	ordinary	1
dx	ordinary	0

Continued on next page

Continued from previous page

Key	Type	Default
Oy	ordinary	0
Dy	ordinary	1
dy	ordinary	0
showorigin	boolean	true
labelFontSize	ordinary	
mathLabel	boolean	true
decimalSeparator	ordinary	.
comma	boolean	true
xAxis	boolean	true
yAxis	boolean	true
xyAxes	boolean	true
xlabelPos	ordinary	b
ylabelPos	ordinary	l
xyDecimals	ordinary	
xDecimals	ordinary	
yDecimals	ordinary	
xlogBase	ordinary	
ylogBase	ordinary	
xylogBase	ordinary	
trigLabelBase	ordinary	0
xtrigLabels	boolean	true
ytrigLabels	boolean	true
trigLabels	boolean	true
logLines	ordinary	none
ylabelFactor	ordinary	\relax
xlabelFactor	ordinary	\relax
showOriginTick	boolean	true
ticksize	ordinary	-4pt 4pt
xticksize	ordinary	[none]
yticksize	ordinary	[none]
tickstyle	ordinary	full
subticks	ordinary	1
xsubticks	ordinary	1
ysubticks	ordinary	1
subticksize	ordinary	0.75
xsubticksize	ordinary	0.75
ysubticksize	ordinary	0.75
tickwidth	ordinary	0.5\pslinewidth
xtickwidth	ordinary	0.5\pslinewidth
ytickwidth	ordinary	0.5\pslinewidth
subtickwidth	ordinary	0.25\pslinewidth
xsubtickwidth	ordinary	0.25\pslinewidth
ysubtickwidth	ordinary	0.25\pslinewidth

Continued on next page

Continued from previous page

Key	Type	Default
labelOffset	ordinary	0pt
xlabelOffset	ordinary	0pt
ylabelOffset	ordinary	0pt
tickcolor	ordinary	black
xtickcolor	ordinary	black
ytickcolor	ordinary	black
subtickcolor	ordinary	gray
xsubtickcolor	ordinary	gray
ysubtickcolor	ordinary	gray
xticklinestyle	ordinary	solid
xsubticklinestyle	ordinary	solid
yticklinestyle	ordinary	solid
ysubticklinestyle	ordinary	solid
ticklinestyle	ordinary	solid
subticklinestyle	ordinary	solid
nStep	ordinary	1
nStart	ordinary	0
nEnd	ordinary	
xStep	ordinary	0
yStep	ordinary	0
xStart	ordinary	
xEnd	ordinary	
yStart	ordinary	
yEnd	ordinary	
plotNoX	ordinary	1
plotNo	ordinary	1
plotNoMax	ordinary	1
axesstyle	ordinary	axes
xLabels	ordinary	
xLabelsRot	ordinary	0
yLabels	ordinary	
yLabelsRot	ordinary	0
xAxisLabel	ordinary	x
yAxisLabel	ordinary	y
xAxisLabelPos	ordinary	
yAxisLabelPos	ordinary	
llx	ordinary	\z@
lly	ordinary	\z@
urx	ordinary	\z@
ury	ordinary	\z@

References

- [1] Denis Girou. Présentation de PSTricks. *Cahier GUTenberg*, 16:21–70, April 1994.
- [2] Michel Goosens, Frank Mittelbach, Sebastian Rahtz, Dennis Roegel, and Herbert Voß. *The L^AT_EX Graphics Companion*. Addison-Wesley Publishing Company, Boston, Mass., second edition, 2007.
- [3] Nikolai G. Kollock. *PostScript richtig eingesetzt: vom Konzept zum praktischen Einsatz*. IWT, Vaterstetten, 1989.
- [4] Herbert Voß. *PSTricks – Grafik für T_EX und L^AT_EX*. DANTE – Lehmanns, Heidelberg/Hamburg, 6. edition, 2010.
- [5] Herbert Voß. *PSTricks – Graphics and PostScript for L^AT_EX*. UIT, Cambridge – UK, 1st edition, 2010.
- [6] Timothy Van Zandt. *multido.tex - a loop macro, that supports fixed-point addition*. CTAN:/macros/generic/multido.tex, 1997.
- [7] Timothy Van Zandt and Denis Girou. Inside PSTricks. *TUGboat*, 15:239–246, September 1994.

Index

A

all, 22
arrowlength, 11
axes, 22
axesstyle, 22
axis, 23, 29

B

barwidth, 11, 22, 67
black, 23, 24
bottom, 21–23, 41
box plot, 11
box-and-whisker plot, 11
Brightness, 66

C

c, 20
 \cdot , 31
ChangeOrder, 22, 65
comma, 21, 22, 32
curve, 57

D

darkgray, 22, 23
dashed, 22–24
 $\text{\textbackslash dataplot}$, 57
decimals, 22, 72
decimalSeparator, 22, 32
 $\text{\textbackslash displaystyle}$, 30
dots, 57
dotted, 22–24
dx, 35
Dy, 27

E

$\text{\textbackslash empty}$, 23
 $\text{\textbackslash endpsgraph}$, 14
Environment
– psgraph, 14
– pspicture, 20, 21

F

$\text{\textbackslash fileplot}$, 57
fontscale, 22, 72

frame, 22, 41
full, 21, 22

H

HSB, 66
Hue, 66
Hue, 66

I

ignoreLines, 22, 56
inner, 21, 22, 41
IQLfactor, 11

K

Keyvalue
– all, 22
– axes, 22
– axis, 23, 29
– black, 23, 24
– bottom, 21–23
– curve, 57
– darkgray, 22, 23
– dashed, 22–24
– dotted, 22–24
– frame, 22, 41
– full, 22
– inner, 21, 22, 41
– left, 23
– none, 22–24, 45
– polar, 22, 26
– right, 23
– solid, 22–24
– Times-Roman, 22
– top, 21–23
– values, 73
– x, 22
– y, 22
– ybar, 73
Keyword
– arrowlength, 11
– axesstyle, 22
– barwidth, 11, 22, 67
– ChangeOrder, 22, 65
– comma, 21, 22, 32

- decimals, 22, 72
- decimalSeparator, 22, 32
- dx, 35
- Dy, 27
- fontscale, 22, 72
- Hue, 66
- ignoreLines, 22, 56
- IQLfactor, 11
- labelFontSize, 22
- labels, 22
- labelsep, 29
- llx, 19, 22
- lly, 19, 22
- logLines, 22, 45
- mathLabel, 20, 22, 30
- nEnd, 22, 57
- nStart, 22, 57
- nStep, 22, 56, 57
- Ox, 47
- Oy, 47
- plotNo, 22, 62
- plotNoMax, 22, 62, 63
- plotNoX=4, 63
- plotstyle, 57, 68, 69, 72
- polarplot, 22, 74
- PSfont, 22, 72
- PstDebug, 70
- rot, 72
- subtickcolor, 22, 44
- subticklinestyle, 22, 45
- subticks, 22, 27, 43
- subticksiz, 22, 43
- subtickwidth, 22
- tickcolor, 22, 44
- ticklinestyle, 22, 45
- ticks, 22
- ticksize, 21, 22, 41
- tickstyle, 21, 22, 41
- tickwidth, 22
- trigLabelBase, 23, 33–35
- trigLabels, 21, 23, 33, 38
- urx, 19, 23
- ury, 19, 23
- valuewidth, 23, 72
- xAxis, 23
- xAxisLabel, 19, 23
- xAxisLabelPos, 19, 20, 23
- xDecimals, 23, 32
- xEnd, 23, 57, 69, 70
- xlabelFactor, 23
- xlabelPos, 23, 28, 29
- xLabelRot, 24
- xLabels, 23, 24
- xlogBase, 23, 47, 50
- xStart, 23, 57, 69, 70
- xStep, 23, 57
- xsubtickcolor, 23
- xsubticklinestyle, 23, 45
- xsubticks, 23, 27
- xsubticksiz, 23, 43
- xtickcolor, 23
- xticklinestyle, 23, 45
- xticksiz, 23
- xtrigLabels, 23, 33
- xunit, 35
- xyAxes, 23, 27
- xyDecimals, 23, 32
- xylogBase, 23, 47, 51
- yAxis, 23
- yAxisLabel, 19, 23
- yAxisLabelPos, 19, 20, 23
- yDecimals, 23, 32
- yEnd, 23
- ylabelFactor, 23
- ylabelPos, 23, 28, 29
- yLabelRot, 24
- yLabels, 23, 24, 68
- ylogBase, 23, 47
- yMaxValue, 23, 24
- yStart, 23
- yStep, 23, 57
- ysubtickcolor, 23
- ysubticklinestyle, 23, 45
- ysubticks, 24, 27
- ysubticksiz, 24, 43
- ytickcolor, 24
- yticklinestyle, 24, 45
- yticksiz, 24
- ytrigLabels, 24, 38
- ytriglabels, 37

L

label, 29
labelFontSize, 22
labels, 22
labelsep, 29
Least square method, 69
left, 23
\listplot, 21, 57, 69
llx, 19, 22
lly, 19, 22
logarithmic label, 47
logLines, 22, 45
LSM, 69

M

Macro
– \cdot, 31
– \dataplot, 57
– \displaystyle, 30
– \empty, 23
– \endpsgraph, 14
– \fileplot, 57
– \listplot, 21, 57, 69
– \psaxes, 10, 14, 27, 48
– \pscustom, 65
– \psgraph, 14, 20
– \pshlabel, 20, 21
– \pslinewidth, 22
– \psparametricplot, 10
– \psplot, 10, 35, 74
– \pstRadUnit, 35
– \pstScalePoints, 21, 70
– \pstVerb, 10
– \psvlabel, 21
– \psxTick, 20
– \psyTick, 20
– \readdata, 12, 56, 57
– \scriptscriptstyle, 30
– \scriptstyle, 30
– \textstyle, 30
mathLabel, 20, 22, 30

N

nEnd, 22, 57
none, 22–24, 45
nStart, 22, 57

nStep, 22, 56, 57

O

Ox, 47
Oy, 47

P

Package
– pst-plot, 2, 21, 28, 40, 41, 47, 56, 62
– pst-xkey, 2
– pstricks, 2, 72
– pstricks-add, 2, 41
plotNo, 22, 62
plotNoMax, 22, 62, 63
plotNoX=4, 63
plotstyle, 57, 68, 69, 72
polar, 22, 26
polar coordinate, 26
polarplot, 22, 74
\psaxes, 10, 14, 27, 48
\pscustom, 65
PSfont, 22, 72
\psgraph, 14, 20
psgraph, 14
\pshlabel, 20, 21
\pslinewidth, 22
\psparametricplot, 10
pspicture, 20, 21
\psplot, 10, 35, 74
pst-plot, 2, 21, 28, 40, 41, 47, 56, 62
pst-xkey, 2
PstDebug, 70
\pstRadUnit, 35
pstricks, 2, 72
pstricks-add, 2, 41
\pstScalePoints, 21, 70
\pstVerb, 10
\psvlabel, 21
\psxTick, 20
\psyTick, 20

R

\readdata, 12, 56, 57
right, 23
rot, 72

S

Saturation, 66
`\scriptscriptstyle`, 30
`\scriptstyle`, 30
solid, 22–24
subtickcolor, 22, 44
subticklinestyle, 22, 45
subticks, 22, 27, 43
subticksizе, 22, 43
subtickwidth, 22
Syntax
– c, 20

T

`\textstyle`, 30
tickcolor, 22, 44
ticklinestyle, 22, 45
ticks, 22
ticksize, 21, 22, 41
tickstyle, 21, 22, 41
tickwidth, 22
Times-Roman, 22
top, 21–23
trigLabelBase, 23, 33–35
trigLabels, 21, 23, 33, 38

U

urx, 19, 23
ury, 19, 23

V

Value
– bottom, 41
– dots, 57
– full, 21
– LSM, 69
– values, 72
– values*, 72
– ybar, 68
values, 72, 73
values*, 72
valuewidth, 23, 72

X

x, 22
xAxis, 23
xAxisLabel, 19, 23
xAxisLabelPos, 19, 20, 23

xDecimals, 23, 32
xEnd, 23, 57, 69, 70
xlabelFactor, 23
xlabelPos, 23, 28, 29
xLabelRot, 24
xLabels, 23, 24
xlogBase, 23, 47, 50
xStart, 23, 57, 69, 70
xStep, 23, 57
xsubtickcolor, 23
xsubticklinestyle, 23, 45
xsubticks, 23, 27
xsubticksizе, 23, 43
xtickcolor, 23
xticklinestyle, 23, 45
xticksizе, 23
xtrigLabels, 23, 33
xunit, 35
xyAxes, 23, 27
xyDecimals, 23, 32
xylogBase, 23, 47, 51

Y

y, 22
yAxis, 23
yAxisLabel, 19, 23
yAxisLabelPos, 19, 20, 23
ybar, 68, 73
yDecimals, 23, 32
yEnd, 23
ylabelFactor, 23
ylabelPos, 23, 28, 29
yLabelRot, 24
yLabels, 23, 24, 68
ylogBase, 23, 47
yMaxValue, 23, 24
yStart, 23
yStep, 23, 57
ysubtickcolor, 23
ysubticklinestyle, 23, 45
ysubticks, 24, 27
ysubticksizе, 24, 43
ytickcolor, 24
yticklinestyle, 24, 45
yticksizе, 24
ytrigLabels, 24, 38

ytriglabels, 37